

## EMC.DES-1221.v2023-02-04.q66

<b>Exam Code:</b>	DES-1221
<b>Exam Name:</b>	Specialist - Implementation Engineer, PowerStore Solutions Exam
<b>Certification Provider:</b>	EMC
<b>Free Question Number:</b>	66
<b>Version:</b>	v2023-02-04
<b># of views:</b>	1002
<b># of Questions views:</b>	660
<a href="https://www.freeqas.com/qa/EMC/DES-1221/EMC.DES-1221.v2023-02-04.q66.html">https://www.freeqas.com/qa/EMC/DES-1221/EMC.DES-1221.v2023-02-04.q66.html</a>	

### NEW QUESTION: 1

What is the correct power up sequence for a PowerStore?

- A. 1. Base Enclosure, 2. Expansion Enclosure
- B. 1. Base Enclosure Node A, 2. Base Enclosure Node B, 3. Expansion Enclosure
- C. 1. Expansion Enclosure, 2. Base Enclosure
- D. 1. Base Enclosure Node B, 2. Base Enclosure Node A, 3. Expansion Enclosure

**Answer: C** ([LEAVE A REPLY](#))

### NEW QUESTION: 2

A storage administrator has configured the addition of a VNX2 as a remote system for migration. Which Import External Storage migration feature architectural components are now established?

- A. Data path and management control path to the access host
- B. Host Fibre Channel initiators are registered on the VNX2 storage system
- C. Data path and management control path to the source storage system
- D. Host iSCSI initiators are registered on the VNX2 storage system

**Answer: (SHOW ANSWER)**

### NEW QUESTION: 3

Use the simulator to determine how many logical ports are currently marked for replication on the PowerStore appliance.

Note: It is necessary to close (x) the simulator window before you can select a response to this question.

Simulator:

OVERVIEW			CAPACITY		PERFORMANCE			
Appliances	Alerts	Watching	0.3%	Free	Physical	Latency	IOPS	Bandwidth
1	0	0		6.1 TB	6.1 TB	203 $\mu$ s	0 kIOPS	1.1 MB/s

Cluster2

Block	Volume Groups	Volumes	Hosts
0	0	0	0

File	File Systems	SMB Shares	NFS Exports
0	0	0	0

Alerts

CRITICAL	MAJOR	MINOR	INFO
0	0	0	0

Watchlist

There are no items in your watchlist.  
Click the 'More Actions' button on a list page to add it to your watchlist.

DELL EMC

There are no Critical alerts.

OVERVIEW

Appliances 1 Alerts 0 Watching 0

Replication

Remote Systems

Protection Policies

PERFORMANCE

Physical 6.1 TB Latency 203 μs IOPS 0 kIOPS Bandwidth 1.1 MB/s

Cluster2

Block: 0 Volume Groups, 0 Volumes, 0 Hosts

File: 0 File Systems, 0 SMB Shares, 0 NFS Exports

Alerts

0 CRITICAL, 0 MAJOR, 0 MINOR, 0 INFO

There are no Critical alerts

Watchlist

There are no items in your watchlist. Click the 'More Actions' button on a list page to add it to your watchlist.

DELL EMC PowerStore Cluster2

Dashboard Monitoring Compute Storage Protection Migration Hardware Settings

### Hardware

APPLIANCES PORTS

+ ADD MODIFY MORE ACTIONS

Name	Alerts	Model	Service Tag	Express Service Code	Status	IP Address
Cluster2-appliance1		PowerStore 1000T	2AR73V3	3050642594	Online	192.168.1.41

DELL EMC PowerStore Cluster2

Dashboard Monitoring Compute Storage Protection Migration Hardware Settings

Hardware

APPLIANCES PORTS

Appliance	Slot/Module	Node	Health of Ports				Speed (Gbps)
			0	1	2	3	
Cluster2-appliance-1	EmbeddedModule	NodeA	✓	⊘	⊘	⊘	1 Gbps
		NodeB	✓	⊘	⊘	⊘	
	4PortCard	NodeA	✓	✓	✓	✓	25 Gbps
		NodeB	✓	✓	✓	✓	
	IoModule0	NodeA	⊘	⊘	⊘	⊘	--
		NodeB	⊘	⊘	⊘	⊘	
IoModule1	NodeA	✓	✓	✓	✓	25 Gbps	
	NodeB	✓	✓	✓	✓		

**DELL EMC PowerStore Cluster2**

Dashboard Monitoring Compute Storage Protection Migration Hardware Settings

### Hardware

APPLIANCES PORTS

Replication  
 Remote Systems  
 Protection Policies

Appliance	Slot/Module	Node	Health of Ports				Speed (Gbps)
			0	1	2	3	
Cluster2-appliance-1	EmbeddedModule	NodeA	✔	⊖	○	○	1 Gbps
		NodeB	✔	⊖	○	○	
	4PortCard	NodeA	✔	✔	✔	✔	25 Gbps
		NodeB	✔	✔	✔	✔	
	IoModule0	NodeA	⊖	⊖	⊖	⊖	--
		NodeB	⊖	⊖	⊖	⊖	
IoModule1	NodeA	✔	✔	✔	✔	25 Gbps	
	NodeB	✔	✔	✔	✔		

**DELL EMC PowerStore Cluster2**

Dashboard Monitoring Compute Storage Protection Migration Hardware Settings

### Replication

PAUSE FAILOVER

Session Status	Source System	Source Resource	Destination System	Destination Resource	Type	ETA	Policy
There are no replications.							

DELL EMC PowerStore | Cluster2

Dashboard Monitoring Compute Storage Protection Migration Hardware Settings

### Replication

PAUSE FAILOVER

Session Status	Source System	Source Resource	Destination System	Destination Resource	Type	ETA	Policy
<p>There are no replications.</p>							

DELL EMC PowerStore | Cluster2

Dashboard Monitoring Compute Storage Protection Migration Hardware Settings

### Hardware

APPLIANCES PORTS

+ ADD MODIFY MORE ACTIONS

Name	Alerts	Model	Service Tag	Express Service Code	Status	IP Address
Cluster2-appliance1		PowerStore 1000T	2AR73V3	3050642594	Online	192.168.1.41

Hardware > Cluster2-appliance-1

<b>CAPACITY</b> Free Physical 0.3% 6.1 TB 6.1 TB	<b>PERFORMANCE</b> Latency IOPS Bandwidth 203 μs 0 kIOPS 1.1 MB/s	<b>ALERTS</b> Critical Major Minor 0 0 0	<b>PORTS</b> Link Up Link Down 18 2	<b>HARDWARE</b> Drives Rear Internal ✓ ✓ ✓
---	---	--	---	--

Usage Historical Usage



Data Savings



EMC PowerStore Cluster2

Dashboard Monitoring Compute Storage Protection Migration Hardware Settings

Hardware > Cluster2-appliance-1

**CAPACITY**  
 0.3% Free Physical  
 6.1 TB 6.1 TB

**PERFORMANCE**  
 Latency: 203 μs IOPS: 0 kIOPS Bandwidth: 1.1 MB/s

**ALERTS**  
 Critical: 0 Major: 0 Minor: 0

**PORTS**  
 Link Up: 18 Link Down: 2

**HARDWARE**  
 Drives: ✓ Rear: ✓ Internal: ✓

MAP STORAGE NETWORK MORE ACTIONS

Node-Module-Name	Link State	Link Aggregation - Name	Link Aggr... - Mode	Link Aggr... - State	Mapped for Storage	Tagged for Replication
<input type="checkbox"/> BaseEnclosure-NodeA-4PortCard-FEPort1 <input type="checkbox"/> BaseEnclosure-NodeA-4PortCard-FEPort0		BaseEnclosure-NodeA-bond0	LACP		<input checked="" type="checkbox"/>	<input checked="" type="checkbox"/>
<input type="checkbox"/> BaseEnclosure-NodeA-4PortCard-FEPort2		--	--	--	<input type="checkbox"/>	--
<input type="checkbox"/> BaseEnclosure-NodeA-4PortCard-FEPort3		--	--	--	<input type="checkbox"/>	--
<input type="checkbox"/> BaseEnclosure-NodeA-EmbeddedModule-MgmtPort		--	--	--	--	--
<input type="checkbox"/> BaseEnclosure-NodeA-EmbeddedModule-ServicePort		--	--	--	--	--
<input type="checkbox"/> BaseEnclosure-NodeA-IoModule1-FEPort0		--	--	--	<input type="checkbox"/>	--
<input type="checkbox"/> BaseEnclosure-NodeA-IoModule1-FEPort1		--	--	--	<input type="checkbox"/>	--
<input type="checkbox"/> BaseEnclosure-NodeA-IoModule1-FEPort2		--	--	--	<input type="checkbox"/>	--

- A. 1
- B. 2
- C. 4
- D. 6

Answer: B (LEAVE A REPLY)

**NEW QUESTION: 4**

How many cables are required for minimum support for PowerStore T Front-End storage connectivity?

- A. 4
- B. 6
- C. 1
- D. 2

Answer: D (LEAVE A REPLY)

**NEW QUESTION: 5**

You are a network administrator that needs to setup a Data switch model S5248F-ON to be used for PowerStore 7000T system Use the Simulator to:

- 1) Check the OS version and license status.
- 2) Set management IP address 172.17.57.10 subnet as 255.255.255.0 on chassis = 1, slot = 1, port = 10
- 3) Enable the port
- 4) Configure default route with gateway 192.168.1.254, NTP server 192.168.1.50
- 5) Enable RSTP with priority 4096
- 6) Commit and exit.

You are a network administrator that needs to setup a Data switch model S5248F-ON to be used for PowerStore 7000T system. Use the simulator to:

- 1) Check the OS version and license status
- 2) Set management IP address 172.17.57.10, subnet as 255.255.255.0 on chassis = 1, slot = 1, port = 1
- 3) Enable the port
- 4) Configure default route with gateway 192.168.1.254, NTP server 192.168.1.50
- 5) Enable RSTP with priority 4096
- 6) Commit and exit

When you have finished using the simulator, click **Next**.

**PowerStore Simulator**

**▶ Start Simulator**

**Answer:**

Below are the exhibits solution for this simulation.

You are a network administrator that needs to setup a Data switch model S5248F-ON to be used for PowerStore 7000T system. Use the simulator to:

- 1) Check the OS version and license status
- 2) Set management IP address 172.17.57.10, subnet as 255.255.255.0 on chassis = 1, slot = 1, port = 1
- 3) Enable the port
- 4) Configure default route with gateway 192.168.1.254, NTP server 192.168.1.50
- 5) Enable RSTP with priority 4096
- 6) Commit and exit

When you have finished using the simulator, click **Next**.

```
# show version
Dell EMC Networking OS10-Enterprise
Copyright (c) 1999-2019 by Dell Inc. All Rights Reserved.
OS Version: 10.4.2.2
Build Version: 10.4.2.2.265
Build Time: 2019-01-14T11:15:14-0800
System Type: S5248F-ON
Architecture: x86_64
Up Time: 3 days 02:06:44
# configure terminal
#(config) interface mgmt 1/1/1
#(conf-ma-1/1/1) ip address 172.17.57.10/24
#(conf-ma-1/1/1) no shutdown
#(conf-ma-1/1/1) exit
#(config) management route 0.0.0.0/0 192.168.1.254
#(config) ntp server 192.168.1.50
#(config) end
# configure terminal
#(config) spanning-tree mode rstp
#(config) spanning-tree rstp priority 4096
#(config) end
# copy running-configuration startup-configuration
# exit
# |
```

#### NEW QUESTION: 6

Which API does PowerStore use to communicate with ESXi server during vVols provisioning operation?

- A. REST
- B. SOAP
- C. VAAI
- D. VASA

**Answer: D (LEAVE A REPLY)**

Explanation

VASA is a VMware-defined API meant to provide a common way for VMware to integrate with storage vendors. The API is implemented using an out-of-band, Simple Object Access Protocol (SOAP) over HTTPS.

Reference: <https://volumes.blog/2020/05/06/what-is-powerstore-part-4-vvols/>

#### NEW QUESTION: 7

A SQL Cluster with attached PowerStore storage has Volumes SQL1, SQL2, SQL4, SQL5 which all require write order preservation. The SQL administrator no longer requires SQL4 and has removed it from the database. The Storage Administrator goes to delete volume SQL4 and finds that the option is grayed out.

Why is the option to delete the volume unavailable?

- A. SQL4 is part of a volume group
- B. SQL4 still has replications
- C. SQL4 still has snapshots

D. SQL4 was renamed from SQL3

Answer: A ([LEAVE A REPLY](#))

#### NEW QUESTION: 8

What describes the remote replication Failover operation?

- A. It is run automatically by the replication destination system in the event of a source system outage
- B. It is run from the replication destination system by the administrator in the event of a source system outage
- C. It is run automatically by the replication source system in the event of a source system outage
- D. It is run from the replication source system by the administrator in the event of an outage on the system

Answer: ([SHOW ANSWER](#))

Explanation/Reference: <https://www.dell.com/support/manuals/en-pk/powerstore/pwrstr-protect-data/replication?guid=guid-7641aeec-982e-4e4e-85fb-c50f525635db&lang=en-us>

#### NEW QUESTION: 9

Refer to the Exhibit.

```
#(config) interface vlan 1501
#(conf-if-vl-1501) interface ethernet 1/1/54
#(conf-if-eth1/1/54) description Discovery_Laptop
#(conf-if-eth1/1/54) switchport access vlan 1501
#(conf-if-eth1/1/54) no shutdown
```

A Network administrator is failing to discover a PowerStore T system using the PowerStore Discovery Utility. What might be the issue?

- A. Discovery network uses only native VLAN
- B. Port 54 needs to be enabled
- C. Dedicated port needs to be used for discovery network
- D. Port 54 has not been set to trunk mode

Answer: C ([LEAVE A REPLY](#))

#### NEW QUESTION: 10

Refer to the Exhibit.



Which port location in the graphic is used for network management connectivity on a PowerStore T?

- A. 1
- B. 3

C. 2

D. 4

**Answer: C (LEAVE A REPLY)**

#### **NEW QUESTION: 11**

What describes the process used in the Import External Storage migration architecture?

A. Orchestrator on PowerStore communicates over the control path to the host plugin and controls the multipathing active path to storage

B. Plugin on PowerStore communicates over the control path to orchestrator on the host and controls the multipathing active path to storage

C. Orchestrator on PowerStore communicates over the data path to the host plugin and controls the multipathing active path to storage

D. Plugin on PowerStore communicates over the data path to orchestrator on the host and controls the multipathing active path to storage

**Answer: D (LEAVE A REPLY)**

Explanation/Reference: <https://www.dell.com/support/manuals/en-pk/powerstore-1000/pwrstr-import/importing-external-storage-to-powerstore-overview?guid=guid-6fef77c4-d4c9-49c6-8de2-efd67aa52ca5>

#### **NEW QUESTION: 12**

What are the IP requirements for ICW on PowerStore X and PowerStore T models?

A. PowerStore T requires three storage IP addresses and PowerStore X requires five storage IP addresses

B. PowerStore T requires four management IP addresses and PowerStore X requires six management IP addresses

C. PowerStore T requires five management IP addresses and PowerStore X requires six management IP addresses

D. PowerStore T requires seven storage IP addresses and PowerStore X requires three storage IP addresses

**Answer: (SHOW ANSWER)**

Explanation

Explanation/Reference: <https://www.dell.com/support/manuals/en-pk/powerstore/pwrstr-ntwk-plang/ip-address-requirements-for-initial-configuration?guid=guid-cdb61296-b698-47fb-92ce-284f784cbc2d&lang=en-us>

#### **NEW QUESTION: 13**

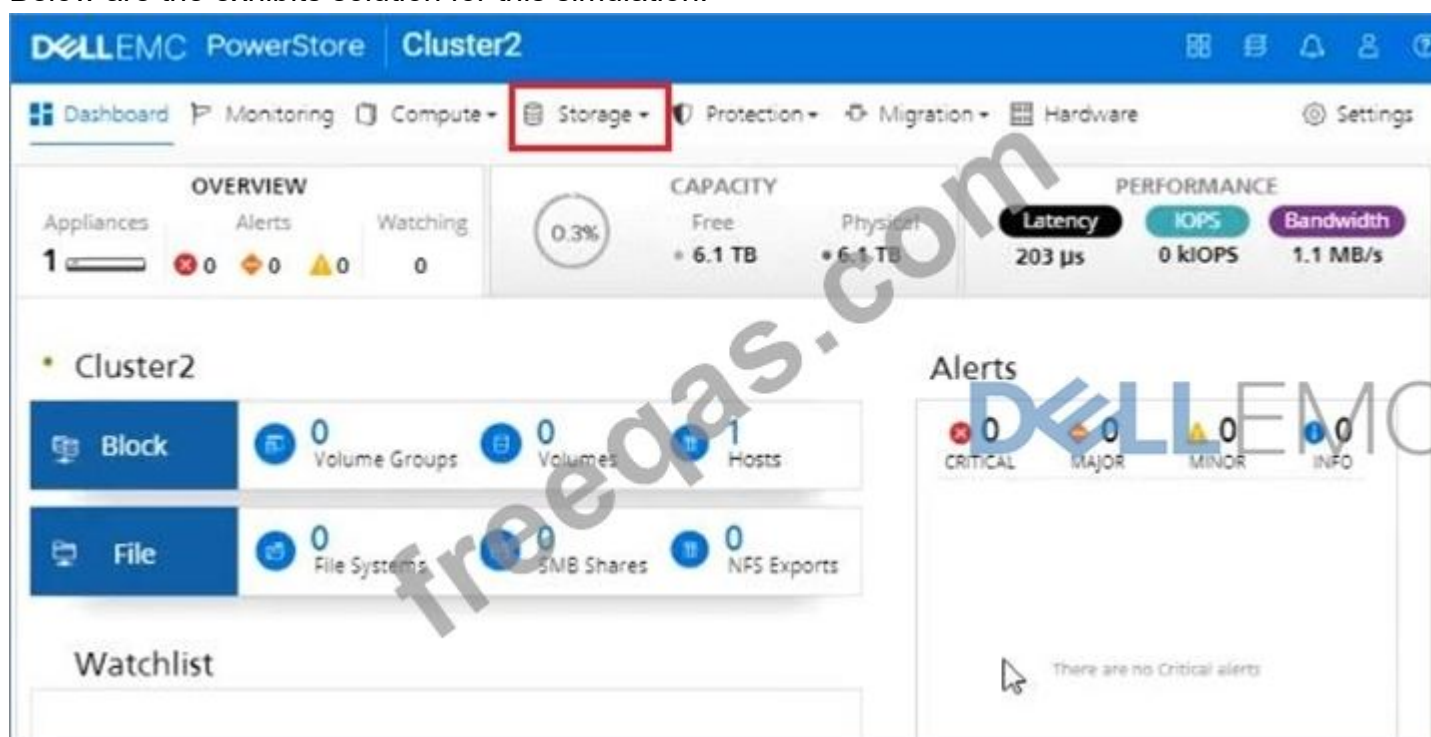
An administrator received a request to provision a new volume. Use the simulator to provision a volume of 50 GB with a performance policy of high for their host named "ApplicationTeam". When you have finished using the simulator, click Next.

An administrator received a request to provision a new volume. Use the simulator to provision a volume of 50 GB with a performance policy of high for their application team. When you have finished using the simulator, click **Next**.



**Answer:**

Below are the exhibits solution for this simulation.



DELL EMC PowerStore Cluster2

Dashboard Monitoring Compute Storage Protection Migration Hardware Settings

OVERVIEW

Appliances Alerts

1 0 0

Cluster2

Block

File

Volume Groups

File Systems

NAS Servers

Volume Groups

volumes

Hosts

File Systems

SMB Shares

NFS Exports

WATCHLIST

There are no items in your watchlist.

CAPACITY

Free Physical

6.1 TB 6.1 TB

PERFORMANCE

Latency IOPS Bandwidth

203 µs 0 KIOPS 1.1 MB/s

Alerts

0 0 0 0

CRITICAL MAJOR MINOR INFO

There are no Critical alerts

DELL EMC PowerStore Cluster2

Dashboard Monitoring Compute Storage Protection Migration Hardware Settings

Volumes

+ CREATE MODIFY DELETE MORE ACTIONS

Name	WWN	Logical Used	Provisioned	Host Mappings	Protection Policy	Performance Policy	Volume Group
There are no Volumes							

Click the CREATE button to add a volume

# Create Volumes

×

Properties

Host Mappings

Summary

## General

Name (Or Prefix)

App\_vol

Description (Optional)

Enter Description

Quantity

1

Size

50

GB

## Additional Properties

Associated Volume Group (Optional)

--

SELECT

Volume Protection Policy (Optional)

--

Volume Performance Policy

Medium

High

Medium

Low

CANCEL

FINISH

NEXT



### Create Volumes

Properties      **Host Mappings**      Summary

**Available Hosts/Host Groups**

Select the hosts or host groups to be mapped to your volume.

Name	OS	Type
<input checked="" type="checkbox"/> ApplicationTeam	Windows	Host

**Logical Unit Number**

The logical unit number is used to help your host(s) identify the volume to which they are mapped. Provide a specific logical unit number or have it generated for you.

**Generate Automatically**     
  Provide a Logical Unit Number

*A unique logical unit number will be generated automatically for your host.*

CANCEL    BACK    **NEXT**

### Create Volumes

Properties      Host Mappings      **Summary**

<b>Total Size</b>	50 GB	<b>The following volumes will be created:</b> • App_vol
<b>Placement</b>	Cluster2-appliance-1	
<b>Host/Host Groups</b>	1	
<b>Volume Group</b>	--	
<b>Performance Policy</b>	High	
<b>Protection Policy</b>		

CANCEL    BACK    **CREATE**



#### NEW QUESTION: 14

What is the significance of the warning given when a volume with data services is deleted?

- A. Volume is mapped to a host
- B. Volume is participating in a migration
- C. Snapshot is present on the volume
- D. Protection policy is configured on the volume

**Answer: B (LEAVE A REPLY)**

Explanation/Reference: <https://www.dell.com/support/manuals/en-pk/powerstore/pwrstr-cfg-vols/delete-a-volume?guid=guid-26e8c12d-a3df-4d4d-8012-ae2ef9e53721&lang=en-us>

#### NEW QUESTION: 15

What is the maximum number of snapshot rules per cluster?

- A. 8
- B. 64
- C. 16
- D. 32

**Answer: A (LEAVE A REPLY)**

#### NEW QUESTION: 16

An administrator receives an alert on a PowerStore Cluster with three appliances:

The appliance A1 is projected to run out of space in 8 days Capacity utilization is above 90 percent Which tools are available to assist the Administrator with a potential resolution?

- A. Thin provision conversion wizard
- B. System Optimization
- C. Space reclamation wizard
- D. Assisted Migration

**Answer: D (LEAVE A REPLY)**

Reference: <https://volumes.blog/2020/05/18/what-is-powerstore-part-11-resource-balancer/>

**Valid DES-1221 Dumps** shared by PrepPdf.com for Helping Passing DES-1221 Exam! PrepPdf.com now offer the **newest DES-1221 exam dumps**, the PrepPdf.com DES-1221 exam **questions have been updated** and **answers have been corrected** get the **newest** PrepPdf.com DES-1221 dumps with Test Engine here: <https://www.preppdf.com/EMC/DES-1221-prepaway-exam-dumps.html> (62 Q&As Dumps, **40%OFF Special Discount: Exam-Tests**)

**NEW QUESTION: 17**

A customer wants to add capacity to their PowerStore 5000T. The system is populated with 6 NVMe SCM 750 GB drives. What is the maximum number and type of drives that can be added to the base enclosure?

- A. 17 NVMe SSD
- B. 15 NVMe SCM
- C. 17 NVMe SCM
- D. 15 NVMe SSD

**Answer:** (SHOW ANSWER)

**NEW QUESTION: 18**

What is the maximum number of snapshot rules per cluster?

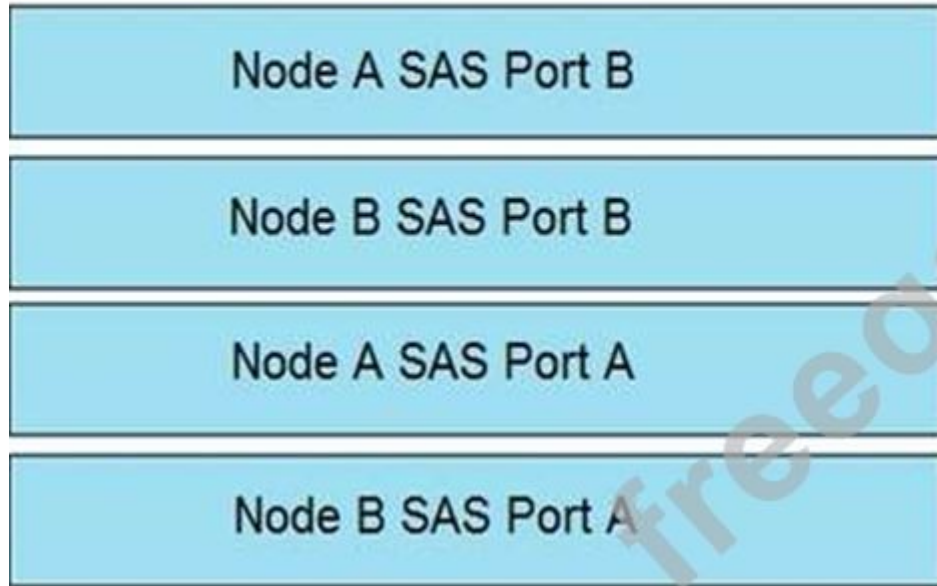
- A. 8
- B. 16
- C. 32
- D. 64

**Answer:** C (LEAVE A REPLY)

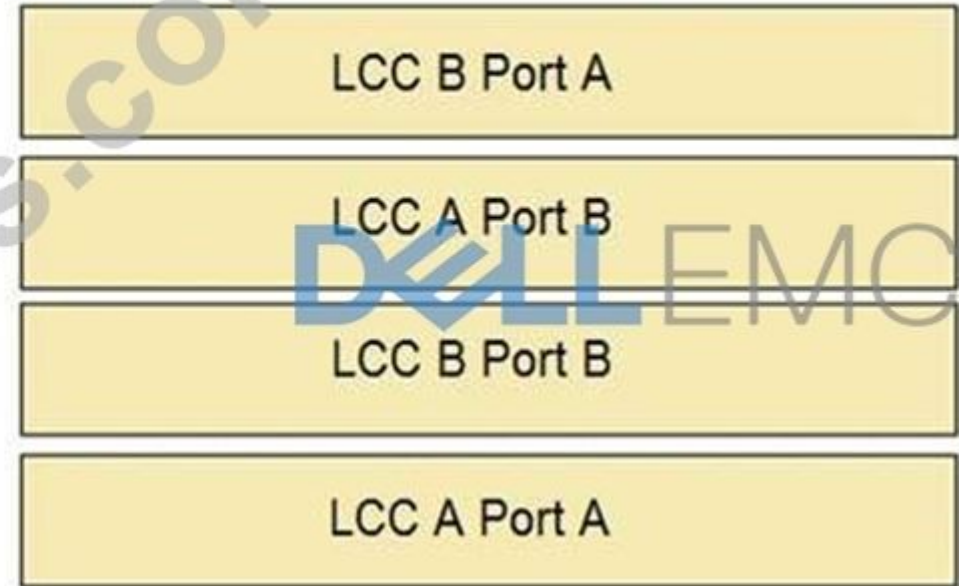
**NEW QUESTION: 19**

Match the correct Base Enclosure port in column A to the Expansion Enclosure port in column B to show the correct cabling for adding a single expansion enclosure to a base enclosure.

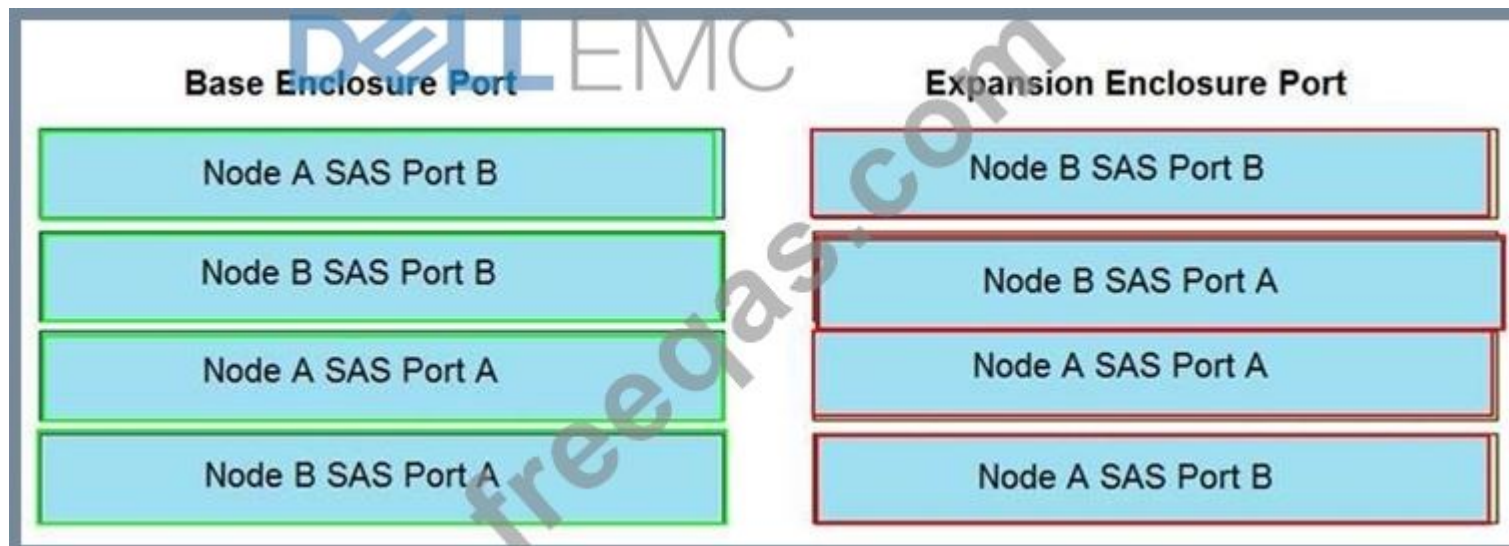
### Base Enclosure Port



### Expansion Enclosure Port



Answer:



Reference:

<https://www.dell.com/support/manuals/en-pk/powerstore/pwrstr-isg/cable-the-base-enclosure-to-the-expansion-enclosure?guid=guid-d68d049f-2b77-489f-b1ab-553f4f3de8aa&lang=en-us>

### NEW QUESTION: 20

A customer wants to add capacity to their PowerStore 5000T. The system is populated with 6 NVMe SCM 750 GB drives. What is the maximum number and type of drives that can be added to the base enclosure?

- A. 17 NVMe SSD
- B. 17 NVMe SCM
- C. 15 NVMe SCM
- D. 15 NVMe SSD

Answer: ([SHOW ANSWER](#))

**NEW QUESTION: 21**

An administrator is trying to set a performance policy while creating a Thin Clone of a volume group. Why is the option to set performance policy unavailable?

- A. Performance policy can only be set on a Thin Clone volume
- B. Volumes in the volume group are not mapped to any hosts
- C. Thin Clones cannot be created using a volume group
- D. No Volumes are added in the volume group

**Answer: A** ([LEAVE A REPLY](#))

**NEW QUESTION: 22**

An administrator received the following alert from PowerStore regarding a previously created NAS server?

Description:

The SMB server of the NAS server PowerStore\_NAS\_01 is configured to be joined to the domain test.mid, but is currently not joined.

Which setting should the administrator change?

- A. LDAP
- B. UDS
- C. NIS
- D. NTP

**Answer: D** ([LEAVE A REPLY](#))

**NEW QUESTION: 23**

Which ports are recommended for use as the interconnect between the two Dell supplied Data Switches connected to PowerStore?

- A. Two 100 GigE
- B. Two 25 GbE
- C. Four 1 GbE
- D. Two 10 GigE

**Answer: B** ([LEAVE A REPLY](#))

**NEW QUESTION: 24**

A storage administrator has provisioned a 50GB volume and presented it to an application. The application owner has requested that the volume be replicated to a secondary array. Which policy should be assigned to the volume to enable replication?

- A. Remote
- B. Protection
- C. Replication
- D. Performance

**Answer: (SHOW ANSWER)**

**NEW QUESTION: 25**

A PowerStore X system is being implemented using Dell EMC S5248F-ON Ethernet switching as data switches.

What is required when configuring the VLT interconnects on the data switches?

- A. Assign the switch default route for the VLT traffic

- B. Configure the VLT MACs with a matching unique made-up address
- C. Set the VLT connection to the switch default VLAN
- D. On each switch, select the switch management port MAC as the VLT MAC

**Answer: B (LEAVE A REPLY)**

#### NEW QUESTION: 26

Use the simulator to determine how many logical ports are currently marked for replication on the PowerStore appliance.

Note: It is necessary to close (x) the simulator window before you can select a response to this question.

- A. 1
- B. 2
- C. 4
- D. 6

**Answer: A (LEAVE A REPLY)**

#### NEW QUESTION: 27

While configuring a Dell switch with PowerStore, what are the recommended license outputs from a show license status command?

- A. Type: Term-Based, Status: Active
- B. Status: Perpetual, Type: Open
- C. Type: Perpetual, Status: Active
- D. Status: Term-Based, Type: Unlimited

**Answer: C (LEAVE A REPLY)**

Explanation/Reference: <https://www.dell.com/support/manuals/en-pk/powerstore/pwrstr-ntwk-cfg/validate-the-top-of-rack-tor-switch-versions-and-licensing?guid=guid-40c30b91-7fb2-4a26-bac7-4ae67c07bdfb&lang=en-us>

#### NEW QUESTION: 28

Refer to the Exhibit.



Note the yellow arrow. A Data Center Engineer notices that the LED is blinking blue and amber alternating at one second intervals. What does this indicate?

- A. Node is Degraded
- B. System is booting
- C. Node in Service Mode
- D. System not initialized

**Answer: C (LEAVE A REPLY)**

Reference: <https://www.dell.com/support/manuals/en-pk/powerstore/pwrstr-isg/embedded-module-leds?guid=guid-bc07892c-75cf-43b6-8f17-8a4c49001aeb&lang=en-us>

### NEW QUESTION: 29

What describes the Import External Storage feature?

- A. An external plugin feature for hosts to tune application workload IO on PowerStore NVMe based storage
- B. A native network configuration feature of PowerStore that configures external Ethernet switching for PowerStore installation
- C. A feature external to PowerStore that orchestrates vMotion movement of virtual machines onto PowerStore X systems
- D. A native data migration feature of PowerStore that imports external block storage to PowerStore

**Answer: D (LEAVE A REPLY)**

Explanation/Reference: <https://www.dell.com/support/manuals/en-pk/powerstore-1000/pwrstr-import/importing-external-storage-to-powerstore-overview?guid=guid-6fef77c4-d4c9-49c6-8de2-efd67aa52ca5>

### NEW QUESTION: 30

Which API does PowerStore use to communicate with ESXi server during vVols provisioning operation?

- A. REST
- B. SOAP
- C. VAAI
- D. VASA

**Answer: D (LEAVE A REPLY)**

VASA is a VMware-defined API meant to provide a common way for VMware to integrate with storage vendors. The API is implemented using an out-of-band, Simple Object Access Protocol (SOAP) over HTTPS.

### NEW QUESTION: 31

1.a.1 What is the maximum number of appliances that can be connected to form a cluster?

- A. 1 in a PowerStore T cluster, 4 in a PowerStore X cluster
- B. 1 in a PowerStore T cluster, 1 in a PowerStore X cluster
- C. 4 in a PowerStore T cluster, 4 in a PowerStore X cluster
- D. 4 in a PowerStore T cluster, 1 in a PowerStore X cluster

**Answer: D (LEAVE A REPLY)**

Reference:

<https://www.delltechnologies.com/en-us/collaterals/unauth/white-papers/products/storage/h18149-dell-emc-powerstore-platform-introduction.pdf>

**Valid DES-1221 Dumps** shared by PrepPdf.com for Helping Passing DES-1221 Exam! PrepPdf.com now offer the **newest DES-1221 exam dumps**, the PrepPdf.com DES-1221 exam **questions have been updated** and **answers have been corrected** get the **newest** PrepPdf.com DES-1221 dumps with Test Engine here: <https://www.preppdf.com/EMC/DES-1221-prepaway-exam-dumps.html> (62 Q&As Dumps, **40%OFF Special Discount: Exam-Tests**)

### NEW QUESTION: 32

What describes the process used in the Import External Storage migration architecture?

- A. Plugin on PowerStore communicates over the data path to orchestrator on the host and controls the multipathing active path to storage
- B. Plugin on PowerStore communicates over the control path to orchestrator on the host and controls the multipathing active path to storage
- C. Orchestrator on PowerStore communicates over the data path to the host plugin and controls the multipathing active path to storage
- D. Orchestrator on PowerStore communicates over the control path to the host plugin and controls the multipathing active path to storage

**Answer: A ([LEAVE A REPLY](#))**

#### **NEW QUESTION: 33**

An administrator has performed the Cutover operation for an import session from a VNX2 source storage system.

What is a result of the operation?

- A. Host is removed from the VNX2 Storage Group
- B. Imported LUN is removed from the VNX2 Storage Group
- C. Storage Group containing the imported LUN is deleted
- D. Imported LUN is deleted from the VNX2

**Answer: ([SHOW ANSWER](#))**

Explanation/Reference: <https://laptrinhx.com/what-is-dell-emc-powerstore-part-7-importing-external-storage-146661351/>

#### **NEW QUESTION: 34**

An administrator assigns a protection policy to a volume group. Volume1, Volume2, Volume3 are put into the volume group. Later it is decided that Volume2 should be replicated at a different time. Volume2 is removed from the volume group. The administrator attempts to assign a new protection policy to Volume2 and the option is greyed out.

Why is the option greyed out?

- A. Already has a protection policy from the Volume-Group
- B. Requires a replication rule not a protection policy
- C. Requires a snapshot rule and a replication rule
- D. Still has associated Volume-Group snapshots

**Answer: D ([LEAVE A REPLY](#))**

#### **NEW QUESTION: 35**

A customer is new to PowerStore and asks if there are any differences between the A and B back-end ports. What is the correct response?

- A. All ports on the base enclosure are input ports
- B. All ports on the base enclosure are output ports
- C. "A" ports are output ports and "B" ports are input ports
- D. "A" ports are input ports and "B" ports are output ports

**Answer: C ([LEAVE A REPLY](#))**

#### **NEW QUESTION: 36**

A PowerStore T cluster has 3 appliances. Users are unable to access NAS services. What might be the issue?

- A. Master appliance is off-line
- B. NAS appliance failover is incorrectly configured

- C. Trial license is expired
- D. Resource balancer service has failed

**Answer: B (LEAVE A REPLY)**

Topic 1, Exam Part 2 - Performance-based QuestionsPart 2 of this exam contains 6 performance-based questions. You will need to run the PowerStore Test Simulator to correctly answer the questions. You invoke the simulator by clicking on one of the two buttons shown below. (Some questions use the Launch Simulator button; some questions use the Start Simulator button.)

#### **NEW QUESTION: 37**

An administrator has performed the Cutover operation for an import session from a VNX2 source storage system. What is a result of the operation?

- A. Host is removed from the VNX2 Storage Group
- B. Imported LUN is removed from the VNX2 Storage Group
- C. Storage Group containing the imported LUN is deleted
- D. Imported LUN is deleted from the VNX2

**Answer: B (LEAVE A REPLY)**

Reference: <https://laptrinhx.com/what-is-dell-emc-powerstore-part-7-importing-external-storage-146661351/>

#### **NEW QUESTION: 38**

A PowerStore T administrator discovers that only one port on each node is active and passing traffic. The other port is healthy and online, but total bandwidth is only half of what the customer expects. Which action could resolve the issue?

- A. Configure Link Aggregation Control Protocol and Dynamic Link Aggregation Group
- B. Configure VLT and Link Aggregation Control Protocol
- C. Implement Dynamic Link Aggregation Group
- D. Implement VLT and Dynamic Link Aggregation Group

**Answer: B (LEAVE A REPLY)**

#### **NEW QUESTION: 39**

At what point in the configuration of an External Storage Import session does the data path from the host to the PowerStore system become the active IO path?

- A. During the ImportKit installation
- B. Before launching the Import Storage wizard
- C. When the import session begins
- D. As MPIO restarts on the host

**Answer: (SHOW ANSWER)**

#### **NEW QUESTION: 40**

A protection policy with snapshot and replication rules is applied to a file system. What is the result?

- A. Both replication and snapshot rules get applied

- B. Replication rules get ignored and only snapshot rules get applied
- C. Snapshot rules get ignored and only replication rules get applied
- D. Applying the protection policy to the file system fails

**Answer: A ([LEAVE A REPLY](#))**

#### **NEW QUESTION: 41**

Which network is used by the PowerStore for communication to the cluster database?

- A. inter-node
- B. ICM
- C. IDN
- D. ICD

**Answer: A ([LEAVE A REPLY](#))**

Explanation/Reference: <https://www.dell.com/support/manuals/en-pk/powerstore-1000t/pwrstr-ntwk-plang/powerstore-t-model-appliance-networks?guid=guid-97a3e988-c1bc-4f51-a445-3af23f19da1b>

#### **NEW QUESTION: 42**

Which network is used by the PowerStore for communication to the cluster database?

- A. ICM
- B. IDN
- C. inter-node
- D. ICD

**Answer: ([SHOW ANSWER](#))**

#### **NEW QUESTION: 43**

What does the remote replication Failover operation do?

- A. Fully synchronizes the source and destination data states and reverses the replication direction
- B. Fully synchronizes the source and destination data states and stops the current replication session
- C. Promotes the destination system to production with its replica data consistent to the last successful RPO synchronization state
- D. Promotes the destination system to production and resets the RPO synchronization cycle in the protection policy

**Answer: D ([LEAVE A REPLY](#))**

Explanation/Reference: <https://www.dell.com/support/manuals/en-pk/powerstore-25-dae/pwrstr-protect-data/replication?guid=guid-7641aeec-982e-4e4e-85fb-c50f525635db&lang=en-us>

#### **NEW QUESTION: 44**

1.a.1 What is the maximum number of appliances that can be connected to form a cluster?

- A. 1 in a PowerStore T cluster, 1 in a PowerStore X cluster
- B. 4 in a PowerStore T cluster, 4 in a PowerStore X cluster
- C. 4 in a PowerStore T cluster, 1 in a PowerStore X cluster
- D. 1 in a PowerStore T cluster, 4 in a PowerStore X cluster

**Answer: B ([LEAVE A REPLY](#))**

**NEW QUESTION: 45**

Refer to the Exhibit.

```
#!/bin/sh
#(config) interface vlan 1501
#(conf-if-vl-1501) interface ethernet 1/1/54
#(conf-if-eth1/1/54) description Discovery_Laptop
#(conf-if-eth1/1/54) switchport access vlan 1501
#(conf-if-eth1/1/54) no shutdown
```

A Network administrator is failing to discover a PowerStore T system using the PowerStore Discovery Utility. What might be the issue?

- A. Dedicated port needs to be used for discovery network
- B. Port 54 needs to be enabled
- C. Port 54 has not been set to trunk mode
- D. Discovery network uses only native VLAN

**Answer: D (LEAVE A REPLY)**

**NEW QUESTION: 46**

When planning rack layout, why should base enclosures be grouped together?

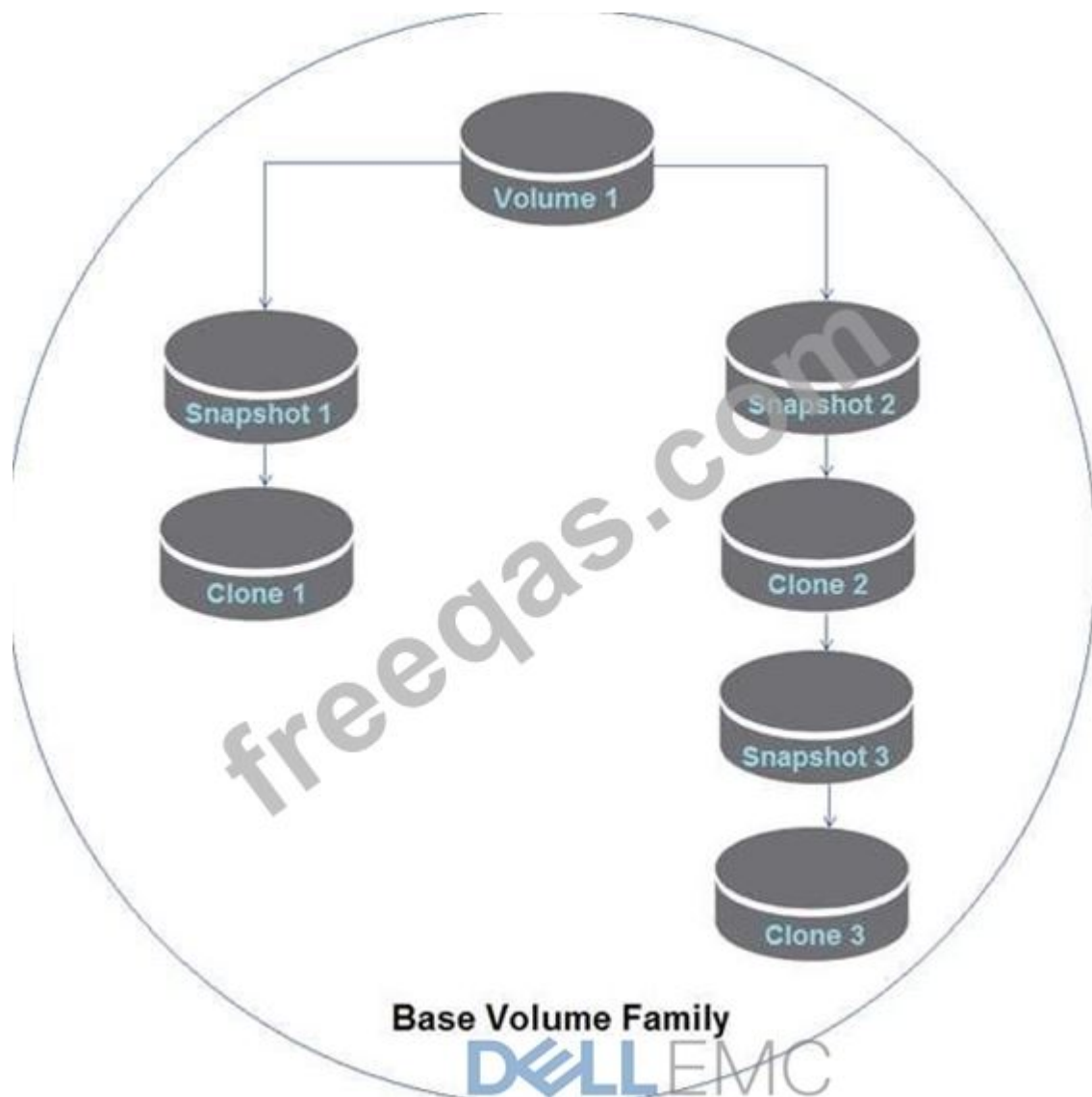
- A. Hot aisle requirement
- B. Ease of cable management
- C. Rack weight balance
- D. Power distribution requirements

**Answer: B (LEAVE A REPLY)**

**Valid DES-1221 Dumps** shared by PrepPdf.com for Helping Passing DES-1221 Exam! PrepPdf.com now offer the **newest DES-1221 exam dumps**, the PrepPdf.com DES-1221 exam **questions have been updated** and **answers have been corrected** get the **newest** PrepPdf.com DES-1221 dumps with Test Engine here: <https://www.preppdf.com/EMC/DES-1221-prepaway-exam-dumps.html> (62 Q&As Dumps, **40%OFF Special Discount: Exam-Tests**)

**NEW QUESTION: 47**

Refer to the Exhibit.



What happens to the parent resource of thin clone 3 if thin clone 2 is deleted?

- A. Snapshot 3 becomes the parent
- B. Thin clone 3 becomes parent
- C. Thin clone 1 becomes parent
- D. Thin clone 3 has an empty parent

**Answer:** ([SHOW ANSWER](#))

Explanation/Reference: <https://www.delltechnologies.com/en-us/documentation/unity-family/unity-p-config-luns/03- configuring-block-thin-clones.htm>

#### NEW QUESTION: 48

Which administrator tasks are needed to increase the size of a VMFS datastore without the use of the VSI plugin, mounted to an external ESXi host?

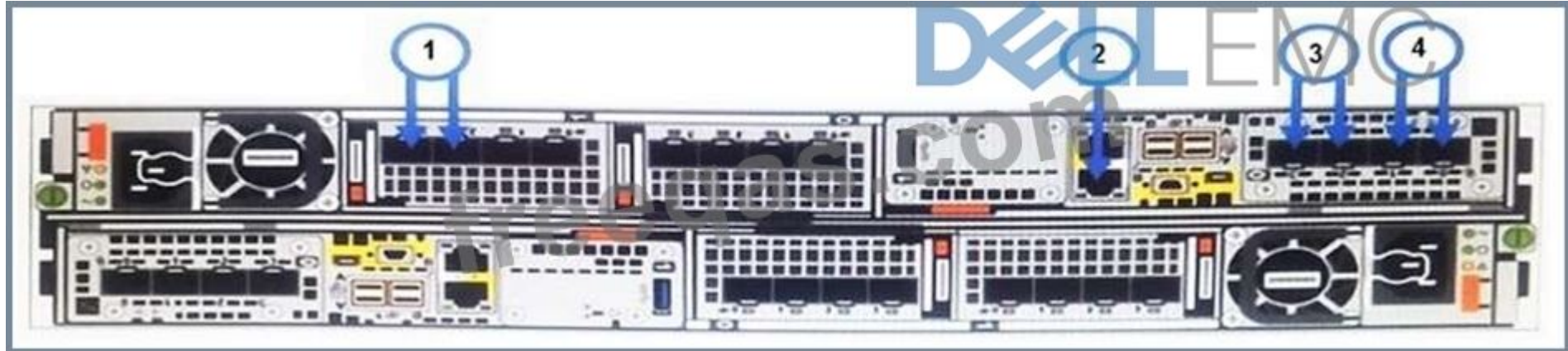
- A. Change the volume size in PowerStore Manager and refresh the size of the datastore in vSphere
- B. Change the volume size in PowerStore Manager and restart the VASA service in vSphere
- C. Change the size of the datastore in vSphere and refresh the size of the volume in PowerStore Manager
- D. Change the size of the datastore in vSphere and restart the VAAI service in PowerStore Manager

**Answer:** C ([LEAVE A REPLY](#))

Explanation/Reference: <https://www.delltechnologies.com/en-us/collaterals/unauth/white-papers/products/storage/h18116-dell-emc-powerstore-vmware-vsphere-best-practices.pdf>

**NEW QUESTION: 49**

Refer to the Exhibit.



Which port location in the graphic is used for network management connectivity on a PowerStore T?

- A. 3
- B. 1
- C. 2
- D. 4

Answer: C ([LEAVE A REPLY](#))

**NEW QUESTION: 50**

Refer to the Exhibit.



Note the yellow arrow. A Data Center Engineer notices that the LED is blinking blue and amber alternating at one second intervals. What does this indicate?

- A. Node is Degraded
- B. Node in Service Mode
- C. System is booting
- D. System not initialized

Answer: ([SHOW ANSWER](#))

**NEW QUESTION: 51**

Which ports are recommended for use as the interconnect between the two Dell supplied Data Switches connected to PowerStore?

- A. Two 10 GigE
- B. Two 25 GbE

C. Two 100 GigE

D. Four 1 GbE

**Answer: B (LEAVE A REPLY)**

Explanation/Reference: <https://www.delltechnologies.com/en-us/collaterals/unauth/white-papers/products/storage/h18241-dell-emc-powerstore-best-practices-guide.pdf> (12)

#### NEW QUESTION: 52

Which administrator tasks are needed to increase the size of a VMFS datastore without the use of the VSI plugin, mounted to an external ESXi host?

A. Change the volume size in PowerStore Manager and refresh the size of the datastore in vSphere

B. Change the size of the datastore in vSphere and restart the VAAI service in PowerStore Manager

C. Change the size of the datastore in vSphere and refresh the size of the volume in PowerStore Manager

D. Change the volume size in PowerStore Manager and restart the VASA service in vSphere

**Answer: C (LEAVE A REPLY)**

#### NEW QUESTION: 53

An administrator received a request to provision a new volume. Use the simulator to provision a volume of 50 GB with a performance policy of high for their host named "ApplicationTeam". When you have finished using the simulator, click Next.



**Answer:**

check the answer below in explanation.

Explanation

Below are the exhibits solution for this simulation.

DELL EMC PowerStore Cluster2

Dashboard Monitoring Compute **Storage** Protection Migration Hardware Settings

**OVERVIEW**

Appliances 1 Alerts 0 0 0 Watching 0

**CAPACITY**

Free 0.3% + 6.1 TB Physical + 6.1 TB

**PERFORMANCE**

Latency 203 μs IOPS 0 kIOPS Bandwidth 1.1 MB/s

Cluster2 Alerts

Block 0 Volume Groups 0 Volumes 1 Hosts

File 0 File Systems 0 SMB Shares 0 NFS Exports

Watchlist

There are no Critical alerts

DELL EMC PowerStore Cluster2

Dashboard Monitoring Compute **Storage** Protection Migration Hardware Settings

**OVERVIEW**

Appliances 1 Alerts 0 0 0 Watching 0

**CAPACITY**

Free + 6.1 TB Physical + 6.1 TB

**PERFORMANCE**

Latency 203 μs IOPS 0 kIOPS Bandwidth 1.1 MB/s

Cluster2

Block 0 Volume Groups 0 Volumes 1 Hosts

File 0 File Systems 0 SMB Shares 0 NFS Exports

Watchlist

There are no items in your watchlist. Click the "More Actions" button on a list page to add it to your watchlist.

There are no Critical alerts

DELL EMC PowerStore Cluster2

Dashboard Monitoring Compute **Storage** Protection Migration Hardware Settings

**Volumes**

+ CREATE MODIFY DELETE MORE ACTIONS

Name	WWN	Logical Used	Provisioned	Host Mappings	Protection Policy	Performance Policy	Volume Group
There are no Volumes							

Click the CREATE button to add a volume.

# Create Volumes



Properties

Host Mappings

Summary

## General

Name (Or Prefix)

App\_vol

Description (Optional)

Enter Description

Quantity

1

Size

50

GB

## Additional Properties

Associated Volume Group (Optional)

--

SELECT

Volume Protection Policy (Optional)

--

Volume Performance Policy

Medium

- High
- Medium
- Low

DELL EMC CANCEL FINISH NEXT

# Create Volumes



Properties

Host Mappings

Summary

## Available Hosts/Host Groups

Select the hosts or host groups to be mapped to your volume.

Name	OS	Type
<input checked="" type="checkbox"/> ApplicationTeam	Windows	Host

## Logical Unit Number

The logical unit number is used to help your host(s) identify the volume to which they are mapped. Provide a specific logical unit number or have it generated for you.

- Generate Automatically**       **Provide a Logical Unit Number**

**i** A unique logical unit number will be generated automatically for your host.

DELL EMC

CANCEL

BACK

NEXT



**NEW QUESTION: 54**

What is the correct power up sequence for a PowerStore?

- A. 1. Expansion Enclosure, 2. Base Enclosure
- B. 1. Base Enclosure Node A, 2. Base Enclosure Node B, 3. Expansion Enclosure
- C. 1. Base Enclosure Node B, 2. Base Enclosure Node A, 3. Expansion Enclosure
- D. 1. Base Enclosure, 2. Expansion Enclosure

**Answer: D (LEAVE A REPLY)**

**NEW QUESTION: 55**

In a PowerStore T source cluster, create a 100GB volume with name "Prod\_vol" and set a protection policy to replicate the volume with RPO 30 minutes to a destination cluster. The destination cluster is already configured. When you have finished using the simulator, click Next.

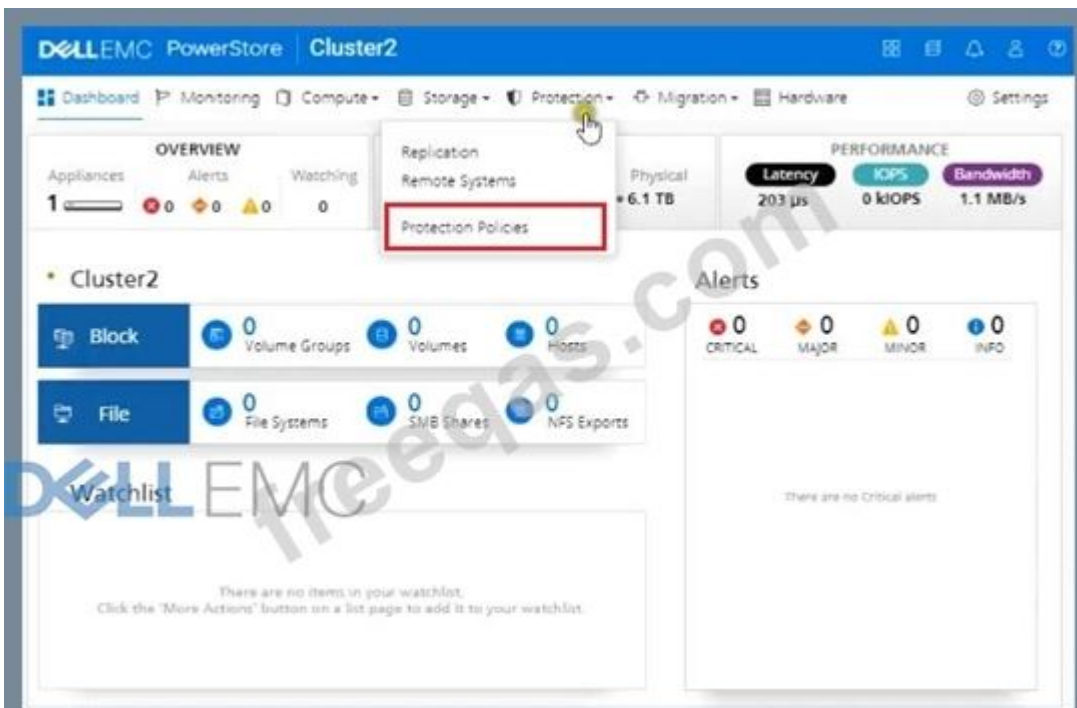
In a PowerStore T source cluster, create a 100GB volume with name "Prod\_vol". Set its protection policy to replicate the volume with an RPO of 30 minutes to a destination cluster. The destination cluster is already configured. When you have finished using the simulator, click **Next**.



**Answer:**

Below are the exhibits solution for this simulation.





### Create Protection Policy

#### Policy Properties

Name

Prod-Rep

Description (Optional)

Enter Description

#### Snapshot Rules

+ CREATE

Name	Days	Frequency/ Start Time	Retention	Policies	File Snapshot Access Type

#### Replication Rules



DELL EMC

### Create Protection Policy

Snapshot Rules  
**+ CREATE**

Name	Days	Frequency/ Start Time	Retention	Policies	File Snapshot Access Type
------	------	--------------------------	-----------	----------	------------------------------

Replication Rules  
**+ CREATE**

Name	Destination	RPO	RPO Alert Threshold	Policies
------	-------------	-----	---------------------	----------

CANCEL APPLY

### Create Protection Policy

Snapshot Rules  
**+ CREATE**

Name	Days	Frequency/ Start Time
------	------	--------------------------

Replication Rules  
**+ CREATE**

Name	Destination
------	-------------

### Create Replication Rule

General Properties

Rule Name  
rep1

Destination  
Cluster1

Recovery Point Objective (RPO)

RPO  
30 minutes

Alert Threshold  
15 minutes

CANCEL CREATE

## Create Protection Policy

Enter Description

### Snapshot Rules

+ CREATE

Name	Days	Frequency/Start Time	Retention	Policies	File Snapshot Access Type
------	------	----------------------	-----------	----------	---------------------------

### Replication Rules

+ CREATE

Name	Destination	RPO	RPO Alert Threshold	Policies
<input checked="" type="checkbox"/> rep1	Cluster1	30 minutes	15 minutes	0

CANCEL

APPLY

## Protection

### Protection Policies

#### Protection Policies

+ CREATE

DELETE

#### Snapshot Rules

#### Replication Rules

Name	Snapshot Rules	Replication Rule	Applied to Volume	Applied to Volume Group
<input type="checkbox"/> Prod-Rep	0	1	0	0

DELL EMC PowerStore | Cluster2

Dashboard Monitoring Compute Storage Protection Migration Hardware Settings

Protection

Protection Policies

Snapshot Rules

Replication Rules

Pro

- Volumes
- Volume Groups
- Storage Containers
- File Systems
- NAS Servers

Name	Snapshot Rules	Replication Rule	Applied to Volume	Applied to Volume Group
<input type="checkbox"/>	0	1	0	0

DELL EMC PowerStore Cluster2

Dashboard Monitoring Compute Storage Protection Migration Hardware Settings

Protection

Protection Policies

- Snapshot Rules
- Replication Rules

Pro

- Volumes
- Volume Groups
- Storage Containers
- File Systems
- NAS Servers

Name	Replication Rule	Applied to Volume	Applied to Volume Group
	0	1	0
	0	0	0

DELL EMC PowerStore Cluster2

Dashboard Monitoring Compute Storage Protection Migration Hardware Settings

Volumes

+ CREATE MODIFY DELETE MORE ACTIONS

Name	WWN	Logical Used	Provisioned	Host Mappings	Protection Policy	Performance Policy	Volume Group
There are no Volumes							
Click the CREATE button to add a volume.							

# Create Volumes



Properties

Host Mappings

Summary

## General

Name (Or Prefix)

Prod\_vol

Description (Optional)

Enter Description

## Additional Properties

Associated Volume Group (Optional)

-- SELECT

Volume Protection Policy (Optional)

--  
None  
Prod-Rep

Quantity

1

Size

100 GB

CANCEL

FINISH

NEXT

## Create Volumes



Properties

Host Mappings

Summary

### General

Name (Or Prefix)

Prod\_vol

Description (Optional)

Enter Description

### Additional Properties

Associated Volume Group (Optional)

--

SELECT

Volume Protection Policy (Optional)

Prod-Rep

Volume Performance Policy

Medium

Quantity

1

Size

100

GB

DELL EMC

CANCEL

FINISH

NEXT

## Create Volumes



Properties

Host Mappings

Summary

### Available Hosts/Host Groups

Select the hosts or host groups to be mapped to your volume.

Name	OS	Type

### Logical Unit Number

The logical unit number is used to help your host(s) identify the volume to which they are mapped. Provide a specific logical unit number or have it generated for you.

Generate Automatically

Provide a Logical Unit Number

A unique logical unit number will be generated automatically for your host.

DELL EMC

CANCEL

BACK

NEXT

The image shows two screenshots from the Dell EMC PowerStore LMC interface. The top screenshot is a 'Create Volumes' dialog box with three tabs: Properties, Host Mappings, and Summary. The Properties tab is active, showing the following configuration:

- Total Size: 100 GB
- Placement: Cluster2-appliance-1
- Host/Host Groups: 0
- Volume Group: -
- Performance Policy: Medium
- Protection Policy: Prod-Rep

Below the properties, it states 'The following volumes will be created:' followed by a list containing 'Prod\_vol'. At the bottom of the dialog, there are three buttons: 'CANCEL', 'BACK', and 'CREATE'. The 'CREATE' button is highlighted with a red box.

The bottom screenshot shows the 'Volumes' page in the LMC interface. It features a navigation bar with 'Dell EMC PowerStore Cluster2 LMC' and a menu with 'Dashboard', 'Monitoring', 'Compute', 'Storage', 'Protection', 'Migration', and 'Hardware'. Below the navigation bar, there are buttons for '+ CREATE', 'MODIFY', 'DELETE', and 'MORE ACTIONS'. A table lists the volumes:

Name	WWN	Logical Used	Provisioned	Host Mappings	Protection Policy	Performance Policy	Volume Group
<input type="checkbox"/> Prod_vol	naa.68ccf0980037 54a14973b356196c 6faf	0 GB	100 GB	0	Prod-Rep	Medium	

**NEW QUESTION: 56**

An administrator has performed the Cutover operation for an import session from a VNX2 source storage system. What is a result of the operation?

- A. Imported LUN is removed from the VNX2 Storage Group
- B. Imported LUN is deleted from the VNX2
- C. Storage Group containing the imported LUN is deleted
- D. Host is removed from the VNX2 Storage Group

**Answer: (SHOW ANSWER)**

**NEW QUESTION: 57**

What are the IP requirements for ICW on PowerStore X and PowerStore T models?

- A. PowerStore T requires three storage IP addresses and PowerStore X requires five storage IP addresses
- B. PowerStore T requires four management IP addresses and PowerStore X requires six management IP addresses
- C. PowerStore T requires five management IP addresses and PowerStore X requires six management IP addresses
- D. PowerStore T requires seven storage IP addresses and PowerStore X requires three storage IP addresses

**Answer: B (LEAVE A REPLY)**

Reference: <https://www.dell.com/support/manuals/en-pk/powerstore/pwrstr-ntwk-plang/ip-address-requirements-for-initial-configuration?guid=guid-cdb61296-b698-47fb-92ce-284f784cbc2d&lang=en-us>

#### NEW QUESTION: 58

A storage administrator has provisioned 10 \* 2GB volumes. 400MB of data is written to each of the ten volumes. What is the Thin Savings ratio for this configuration?

- A. 6:1
- B. 3:1
- C. 5:1
- D. 4:1

**Answer: C (LEAVE A REPLY)**

#### NEW QUESTION: 59

Refer to the Exhibit.



Note the yellow arrow. A Data Center Engineer notices that the LED is blinking blue and amber alternating at one second intervals. What does this indicate?

- A. Node is Degraded
- B. Node in Service Mode
- C. System is booting
- D. System not initialized

**Answer: B (LEAVE A REPLY)**

#### NEW QUESTION: 60

Which network is used by the PowerStore for communication to the cluster database?

- A. inter-node
- B. ICM
- C. IDN
- D. ICD

**Answer: B (LEAVE A REPLY)**

Reference: <https://www.dell.com/support/manuals/en-pk/powerstore-1000t/pwrstr-ntwk-plang/powerstore-t- model-appliance-networks?guid=guid-97a3e988-c1bc-4f51-a445-3af23f19da1b>

**NEW QUESTION: 61**

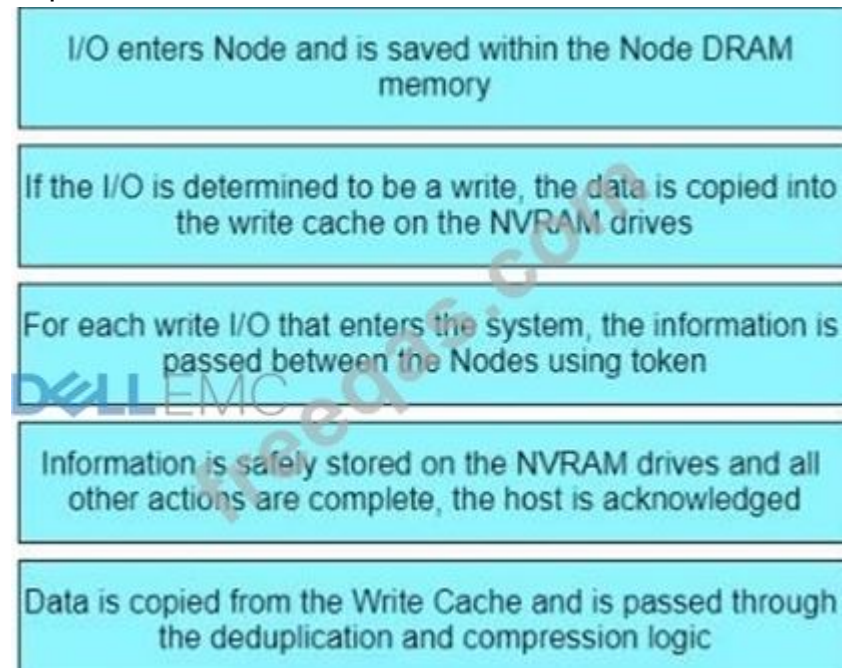
Correctly arrange the sequence of the write operation in PowerStore.

If the I/O is determined to be a write, the data is copied into the write cache on the NVRAM drives	Step 1
Data is copied from the Write Cache and is passed through the deduplication and compression logic	Step 2
For each write I/O that enters the system, the information is passed between the Nodes using token	Step 3
I/O enters Node and is saved within the Node DRAM memory	Step 4
Information is safely stored on the NVRAM drives and all other actions are complete, the host is acknowledged	Step 5

Answer:

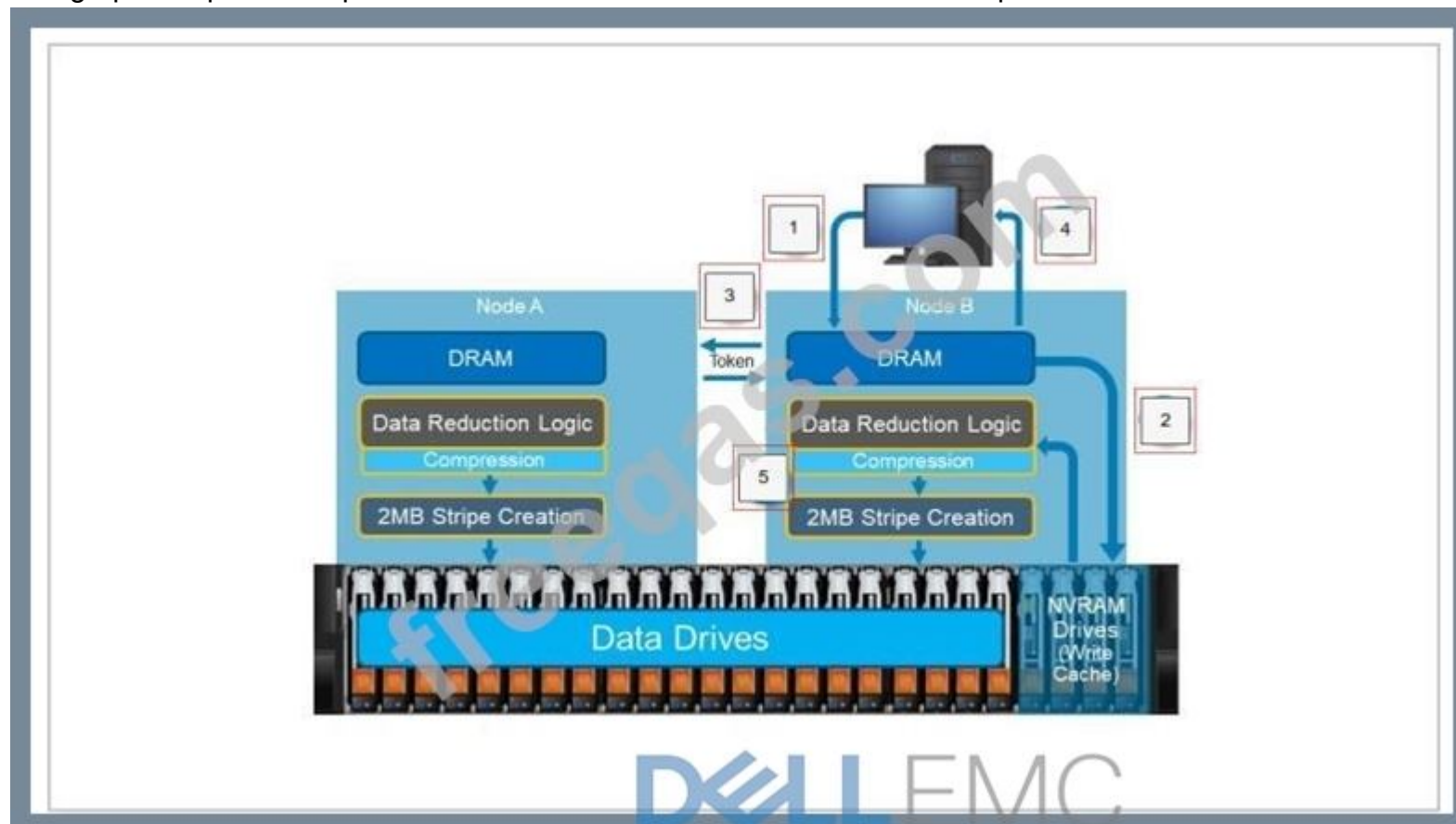
If the I/O is determined to be a write, the data is copied into the write cache on the NVRAM drives	I/O enters Node and is saved within the Node DRAM memory
Data is copied from the Write Cache and is passed through the deduplication and compression logic	If the I/O is determined to be a write, the data is copied into the write cache on the NVRAM drives
For each write I/O that enters the system, the information is passed between the Nodes using token	For each write I/O that enters the system, the information is passed between the Nodes using token
I/O enters Node and is saved within the Node DRAM memory	Information is safely stored on the NVRAM drives and all other actions are complete, the host is acknowledged
Information is safely stored on the NVRAM drives and all other actions are complete, the host is acknowledged	Data is copied from the Write Cache and is passed through the deduplication and compression logic

## Explanation



## Write Operation

The graphic explains the process when the PowerStore receives a write request.



1: Step 1.

In this example, an I/O enters Node B and is saved within the Node DRAM memory. The I/O is analyzed to determine:

1. What type of I/O it is.
2. What resource it is intended for.

3. The location within the resource being updated or requested.

4. And other metadata information.

2: Step 2.

If the I/O is determined to be a write, the data is copied into the write cache on the NVRAM drives. After the information is stored within the write cache, the information stored within the DRAM memory is considered clean as it no longer has the latest copy of the information. This data then becomes part of the read cache, until it is later replaced in cache by newer or more highly accessed data.

3: Step 3.

For each write I/O that enters the system, the information is passed

between the Nodes using tokens. This operation updates the peer node that a new write has been received and that it has the newest copy of the data. A token includes information about the I/O such as what resource was updated and the address within the resource that was updated. A token also includes information Data Efficiency about the location the I/O was saved to within the write cache. If the peer Node requests that information, the Node can access the data within the NVRAM drives using its own internal channels.

4: Step 4.

After the information is safely stored on the nonvolatile media of the NVRAM drives and all other actions are complete, the host is acknowledged.

5: Step 5.

After the host is acknowledged, data is copied from the Write Cache and is passed through the deduplication and compression logic. The remaining data is then assembled into 2 MB stripes and saved to the back-end storage.

Reference:

<https://www.delltechnologies.com/resources/en-us/asset/white-papers/products/storage/h18151-dell-emc-powerstore-data-efficiencies.pdf>

**Valid DES-1221 Dumps** shared by PrepPdf.com for Helping Passing DES-1221 Exam! PrepPdf.com now offer the **newest DES-1221 exam dumps**, the PrepPdf.com DES-1221 exam **questions have been updated** and **answers have been corrected** get the **newest** PrepPdf.com DES-1221 dumps with Test Engine here: <https://www.preppdf.com/EMC/DES-1221-prepaway-exam-dumps.html> (62 Q&As Dumps, **40%OFF Special Discount: Exam-Tests**)

#### **NEW QUESTION: 62**

A customer is new to PowerStore and asks if there are any differences between the A and B back-end ports. What is the correct response?

- A. All ports on the base enclosure are output ports
- B. "A" ports are input ports and "B" ports are output ports
- C. "A" ports are output ports and "B" ports are input ports
- D. All ports on the base enclosure are input ports

**Answer: B (LEAVE A REPLY)**

#### **NEW QUESTION: 63**

How is the upgrade process on a multi-appliance cluster run?

- A. Master appliance primary node first, then the peer node
- B. On one node at a time
- C. On all primary nodes first, then peer nodes

D. In parallel on all nodes

**Answer: (SHOW ANSWER)**

Explanation

Upgrade

The upgrade process runs on a single node at a time:

Starts with the primary appliance

Non-primary node first

Control Path

Turns off all schedulers

Disable RestAPI for writes

Waits for ongoing management operations to complete

Backs up management DB

Disables Primary Appliance Failover

GUI and RestAPI are unavailable for a short period of time during Control Path failover

#### **NEW QUESTION: 64**

What is the significance of the warning given when a volume with data services is deleted?

A. Volume is mapped to a host

B. Volume is participating in a migration

C. Snapshot is present on the volume

D. Protection policy is configured on the volume

**Answer: C (LEAVE A REPLY)**

Reference: <https://www.dell.com/support/manuals/en-pk/powerstore/pwrstr-cfg-vols/delete-a-volume?guid=guid-26e8c12d-a3df-4d4d-8012-ae2ef9e53721&lang=en-us>

#### **NEW QUESTION: 65**

An administrator is trying to set a performance policy while creating a Thin Clone of a volume group. Why is the option to set performance policy unavailable?

A. Volumes in the volume group are not mapped to any hosts

B. No Volumes are added in the volume group

C. Thin Clones cannot be created using a volume group

D. Performance policy can only be set on a Thin Clone volume

**Answer: D (LEAVE A REPLY)**

Reference:

<https://www.dell.com/support/manuals/en-pk/powerstore/pwrstr-cfg-vols/remove-a-volume-from-a-volume-group?guid=guid-4b974223-26e4-40fe-a1b8-01beb210c305&lang=en-us>

#### **NEW QUESTION: 66**

1.a.1 What is the maximum number of appliances that can be connected to form a cluster?

A. 4 in a PowerStore T cluster, 1 in a PowerStore X cluster

B. 1 in a PowerStore T cluster, 1 in a PowerStore X cluster

C. 4 in a PowerStore T cluster, 4 in a PowerStore X cluster

D. 1 in a PowerStore T cluster, 4 in a PowerStore X cluster

**Answer: A ([LEAVE A REPLY](#))**

**Valid DES-1221 Dumps** shared by PrepPdf.com for Helping Passing DES-1221 Exam! PrepPdf.com now offer the **newest DES-1221 exam dumps**, the PrepPdf.com DES-1221 exam **questions have been updated** and **answers have been corrected** get the **newest** PrepPdf.com DES-1221 dumps with Test Engine here: <https://www.preppdf.com/EMC/DES-1221-prepaway-exam-dumps.html> (**62 Q&As** Dumps, **40%OFF Special Discount: Exam-Tests**)