

## H3C.GB0-191-ENU.v2022-04-14.q149

<b>Exam Code:</b>	GB0-191-ENU
<b>Exam Name:</b>	Constructing Small - and Medium - Sized Enterprise Network
<b>Certification Provider:</b>	H3C
<b>Free Question Number:</b>	149
<b>Version:</b>	v2022-04-14
<b># of views:</b>	3198
<b># of Questions views:</b>	1490
<a href="https://www.freeqas.com/qa/H3C/GB0-191-ENU/H3C.GB0-191-ENU.v2022-04-14.q149.html">https://www.freeqas.com/qa/H3C/GB0-191-ENU/H3C.GB0-191-ENU.v2022-04-14.q149.html</a>	

### NEW QUESTION: 1

An empty MSR router RTA connects two routers RTB and RTC running in OSPF Area 0 through GE0/0 and GE1/0 respectively. The IP addresses of the interfaces GE0/0 and GE1/0 of RTA are 192.168.3.2/24 and 192.168.4.2/24 respectively. Add the following configuration on RTA:

```
[MSR-ospf-1] area 0.0.0.0
```

```
[MSR-ospf-1-area-0.0.0.0]network 192.168.0 0.0.3.255
```

```
[MSR-GigabitEthernet0/0]ospf cost 2
```

```
[MSR-GigabitEthernet1/0]ospf dr-priority 0
```

Then the correct description of the above configuration is \_\_\_\_\_. (Multiple choice)

- A. Modifying the Cost of interface GE0/0 does not affect the establishment of OSPF adjacency
- B. This configuration only enables OSPF on the GE0/0 interface of the MSR router
- C. RTA can only become the DR of the network segment where one of the GE interfaces is located
- D. RTA may become the DR of the network segment where the two GE interfaces are located
- E. This configuration has enabled OSPF on GE0/0 and GE1/0 of the MSR router

**Answer: A,B,C (LEAVE A REPLY)**

### NEW QUESTION: 2

On the MSR router, once the system time is inaccurate, you can use the \_\_\_\_\_ command to adjust the system time.

- A. clock datetime
- B. time
- C. clock
- D. set datetime

**Answer: A (LEAVE A REPLY)**

### NEW QUESTION: 3

Compared with traditional LAN, which of the following advantages does VLAN have? (multiple choice)

- A. Reduce the cost of movement and change
- B. Create a virtual working group
- C. Users are not restricted by physical devices, VLAN users can be anywhere in the network
- D. Limit broadcast packets and improve bandwidth utilization
- E. Enhance the security of communication
- F. Enhance the robustness of the network

**Answer:**

ABCDEF

#### NEW QUESTION: 4

Which of the following advantages does the OSI reference model have? (multiple choice)

- A. The OSI reference model provides compatibility and standard interfaces between devices and promotes standardization.
- B. The OSI reference model is a theoretical description of the information transmission process that occurs between network devices, and defines how to implement each layer of functions through hardware and software.
- C. None of the above statements are correct.
- D. An important feature of the OSI reference model is its layered architecture. The layered design method can transform a large and complex problem into several smaller and easy-to-handle problems.

**Answer: A,D (LEAVE A REPLY)**

#### NEW QUESTION: 5

Which of the following statements about MAC addresses are correct? (multiple choice)

- A. The MAC address is solidified in ROM and cannot be changed under normal circumstances
- B. Ethernet uses MAC address to identify host
- C. Usually only terminal hosts need MAC addresses, routers and other network devices do not need
- D. MAC address is a logical address that is easy to change

**Answer: A,B (LEAVE A REPLY)**

#### NEW QUESTION: 6

The two MSR routers are connected as shown in the figure.



OSPF is currently running between the two routers. Now that you need to configure an ACL on RTA to prevent the establishment of OSPF neighbor relationship between RTA and RTB, which of the following ACLs is feasible to apply in the outbound direction of the GE0/0 interface of RTA?

- A. acl number 3000 rule 0 deny ip destination 224.0.0.5 0 rule 5 permit ip
- B. acl number 3000 rule 0 deny ip destination 224.0.0.5 0 eq 89 rule 5 permit ip
- C. acl number 3000 rule 0 deny ospf rule 5 permit ip
- D. acl number 3000 rule 0 deny udp destination-port eq 89 rule 5 permit ip

**Answer: A,C ([LEAVE A REPLY](#))**

#### **NEW QUESTION: 7**

UDP belongs to the \_\_\_\_\_ of the OSI reference model.

- A. Session layer
- B. Network layer
- C. Transport layer
- D. Presentation layer

**Answer: ([SHOW ANSWER](#))**

#### **NEW QUESTION: 8**

When using the ping command on the MSR router, you can use the \_\_\_\_\_ parameter to set the length of the sent ICMP packet. size

- A. -b
- B. -c
- C. -n
- D. -s

**Answer: ([SHOW ANSWER](#))**

#### **NEW QUESTION: 9**

After opening the console to monitor system information, use the \_\_\_\_\_ command to turn on the screen output of debugging information.

- A. terminal screen
- B. terminal information
- C. terminal debugging
- D. terminal monitor

**Answer: C ([LEAVE A REPLY](#))**

#### **NEW QUESTION: 10**

In the display of the display interface command, which of the following LCP and NCP status indicates that the PPP link has been established?

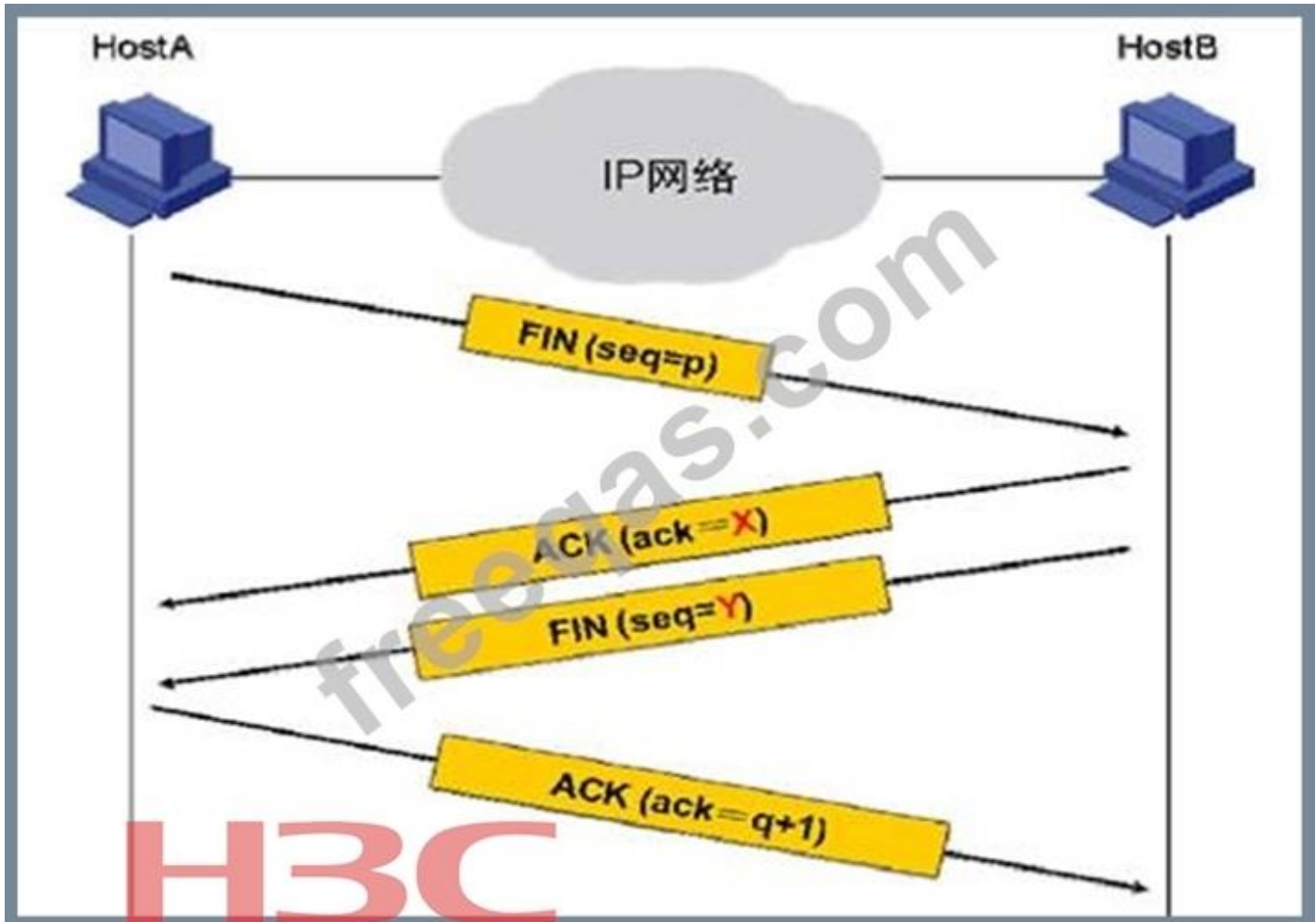
- A. LCP Opened, IPCP Opened
- B. LCP Initial, IPCP Closed
- C. LCP Closed, IPCP Closed

D. LCP Closed, IPCP Opened

Answer: ([SHOW ANSWER](#))

**NEW QUESTION: 11**

In the process of tearing down the TCP connection as shown in the figure, the X part of the ACK should be filled with \_\_\_\_\_.



A. p

B. q+1

C. p+1

D. q

Answer: C ([LEAVE A REPLY](#))

**NEW QUESTION: 12**

The network address of the natural classification network segment corresponding to the IP address 192.48.117.22 is.

Answer:

192.48.117.0

**NEW QUESTION: 13**

If the public network address of the NAT device is dynamically allocated by the operator through ADSL, in this case, you can use \_\_\_\_\_.

- A. NAT using address pool
- B. Static NAT
- C. Basic NAT
- D. Easy IP

**Answer: D (LEAVE A REPLY)**

#### NEW QUESTION: 14

The number of available host addresses contained in the natural classification network segment corresponding to the IP address 165.110.20.67 is. (Please fill in Arabic numerals)

**Answer:**

65534

#### NEW QUESTION: 15

A Layer 3 switch is connected to the GE0/0 interface of the customer's router MSR-1, and this Layer 3 switch is the default gateway for multiple network segments of the customer's office network to which it is connected. MSR-1 is connected to the Internet through the serial port S1/0. The entire network has been interoperable normally, and office network users can access the Internet. Add the following ACL configuration on the router:

```
firewall enable
```

```
acl number 3004
```

```
rule 0 deny ip source 192.168.1.0 0.0.0.255
```

```
rule 5 permit tcp source 192.168.0.0 0.0.255.255
```

```
rule 10 permit icmp
```

At the same time, ACL 3004 is applied in the inbound direction of GE0/0, then \_\_\_\_\_. (Multiple choice)

- A. The router allows users on the 192.168.1.0/24 network segment to pass the WWW service traffic to the Internet
- B. The router allows ICMP packets of all users to pass
- C. The router allows users on the 192.168.2.0/24 network segment to pass the FTP data stream sent from the Internet
- D. The router prohibits all IP traffic to the Internet from users on the 192.168.1.0/24 network segment from passing through

**Answer: C,D (LEAVE A REPLY)**

#### NEW QUESTION: 16

If you want to upgrade the router but do not have a network cable, you can use the configuration cable and use the \_\_\_\_\_ protocol to upgrade through HyperTerminal.

- A. Xmodem
- B. Zmodem

C. TFTP

D. Ymodem

Answer: ([SHOW ANSWER](#))

**Valid GB0-191-ENU Dumps** shared by PrepPdf.com for Helping Passing GB0-191-ENU Exam! PrepPdf.com now offer the **newest GB0-191-ENU exam dumps**, the PrepPdf.com GB0-191-ENU exam **questions have been updated** and **answers have been corrected** get the **newest** PrepPdf.com GB0-191-ENU dumps with Test Engine here:  
<https://www.preppdf.com/H3C/GB0-191-ENU-prepaway-exam-dumps.html> (434 Q&As Dumps, **40%OFF Special Discount: Exam-Tests**)

#### NEW QUESTION: 17

The following ACL is configured on the MSR router:

```
acl number 3999
```

```
rule permit tcp source 10.10.10.1 255.255.255.255 destination 20.20.20.1 0.0.0.0 time-range lucky
```

Then the correct understanding of the ACL is \_\_\_\_\_. (Multiple choice)

- A. The rule can match TCP packets from any source network segment
- B. The rule only takes effect during the lucky time period
- C. The rule can match TCP packets to any destination network segment
- D. This rule only matches packets destined for 20.20.20.1
- E. This rule only matches data packets originating from 10.10.10.1

Answer: A,B,D ([LEAVE A REPLY](#))

#### NEW QUESTION: 18

In the following statement about HDLC, what is wrong is \_\_\_\_\_. (Multiple choice)

- A. The HDLC protocol uses a unified frame format, so both data messages and protocol messages are transmitted in standard format frames on the HDLC link.
- B. HDLC can run on the same/asynchronous link, so it has a wide range of applications.
- C. The HDLC protocol is a bit-oriented transport layer protocol.
- D. Any bit stream can be transparently transmitted on the HDLC link.

Answer: ([SHOW ANSWER](#))

#### NEW QUESTION: 19

```
119.100.1100 1000
```

```
132.119.100.1100 1111 .... Broadcast address
```

13. The well-known port number of the transport layer used by TFTP is \_\_\_\_\_.

- A. 67
- B. 53

C. 69

D. 68

Answer: C ([LEAVE A REPLY](#))

### NEW QUESTION: 20

The command to configure the bridge priority of the switch SWA to 0 is \_\_\_\_\_.

A. [SWA] stp root priority 0

B. [SWA] stp priority 0

C. [SWA-Ethernet1/0/1] stp priority 0

D. [SWA-Ethernet1/0/1] stp root priority 0

Answer: B ([LEAVE A REPLY](#))

### NEW QUESTION: 21

The following configuration is made on the GE0/0 interface of an MSR router running OSPF:

```
[MSR-GigabitEthernet0/0]ospf cost 2
```

Then the correct description of this configuration command is \_\_\_\_\_. (Multiple choice)

A. This command only affects the path of the data received from this interface

B. By default, the interface cost of the MSR router is proportional to the interface bandwidth

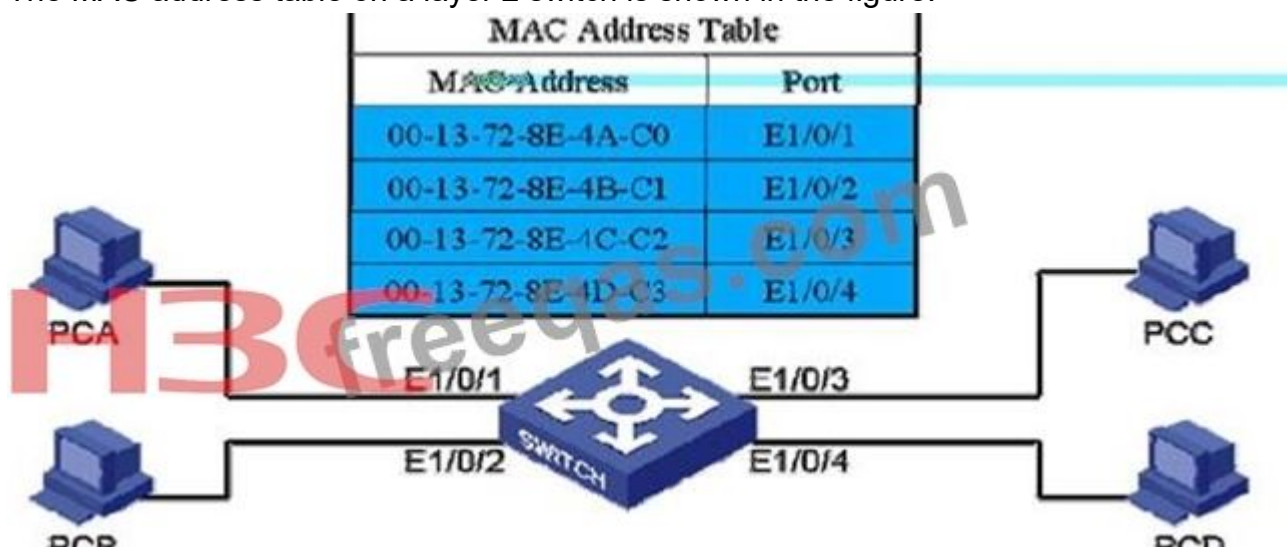
C. This command changes the OSPF Cost value of GE0/0 to 2

D. This command only affects the path of data sent from this interface

Answer: C,D ([LEAVE A REPLY](#))

### NEW QUESTION: 22

The MAC address table on a layer 2 switch is shown in the figure.



When the switch receives a frame with a destination MAC address of 00-13-72-8E-4B-C1 from the E1/0/2 interface, the switch will \_\_\_\_\_ the frame.

A. send out from E1/0/4 interface

B. Send out from the E1/0/2 interface

C. Send out from the E1/0/1 interface

D. Discard directly

- E. Send out from the E1/0/3 interface
- F. send out from all interfaces on the switch

**Answer: D ([LEAVE A REPLY](#))**

### **NEW QUESTION: 23**

On the MSR router, each functional module has its corresponding information display command. Generally, to view the operating information of each functional module, you need to run the corresponding display commands one by one. In order to collect more information at one time and facilitate daily maintenance or problem location, you can execute the \_\_\_\_\_ command in any view to display the current statistical information of the main functional modules of the system.

- A. display diagnostic-information
- B. display ip interface
- C. display all
- D. display system-information

**Answer: A ([LEAVE A REPLY](#))**

### **NEW QUESTION: 24**

The customer's network connection looks like:

HostA----GE0/0--MSR-1--S1/0-----WAN-----S1/0--MSR-2--GE0/0----HostB

Both routers are factory default configuration.

The four interfaces of the router are configured with correct IP addresses. The two hosts HostA and HostB are configured with IP addresses and gateways. Assuming that all physical connections are normal, then \_\_\_\_\_. (Multiple choice)

- A. At least one static route needs to be configured on each router to realize the intercommunication between HostA and HostB
- B. At least 2 static routes need to be configured on each router to realize the intercommunication between HostA and HostB
- C. No route is configured on the router, HostA can ping the IP address of interface S1/0 of MSR-1
- D. No route is configured on the router, HostA can ping the IP address of interface S1/0 of MSR-2

**Answer: ([SHOW ANSWER](#))**

### **NEW QUESTION: 25**

The messages exchanged between the DHCP relay and the DHCP server use \_\_\_\_\_.

- A. anycast
- B. broadcast
- C. unicast
- D. multicast

**Answer: ([SHOW ANSWER](#))**

### **NEW QUESTION: 26**

The three MSR routers RTA, RTB, and RTC are connected to the same frame relay network through their respective S1/0 interfaces. This frame relay network can provide enough PVC resources. As a network engineer, you need to assign IP addresses to these frame relay interfaces.

Which of the following statements is incorrect?

- A. Under the premise of correct routing configuration, three routers can communicate through this frame relay network with only one IP subnet.
- B. Under the premise of correct routing configuration, three routers can communicate through this frame relay network without configuring sub-interfaces.
- C. If transit through any router is not allowed, at least two IP subnets are required to enable three routers to communicate with each other through this frame relay network
- D. If transit through any router is not allowed, at least three IP subnets are required to realize the two-by-two intercommunication of the three routers through this frame relay network

**Answer:** ([SHOW ANSWER](#))

#### NEW QUESTION: 27

Use the \_\_\_\_\_ command to view the NAT table entries.

- A. display nat entry
- B. display nat session
- C. display nat
- D. display nat table

**Answer:** B ([LEAVE A REPLY](#))

#### NEW QUESTION: 28

The rate of the D channel in ISDN PRI is \_\_\_\_\_.

- A. 16 Kbps
- B. 64 Kbps
- C. 54 Kbps
- D. 36 Kbps

**Answer:** A ([LEAVE A REPLY](#))

#### NEW QUESTION: 29

The customer's network connection looks like:

HostA----GE0/0--MSR-1--S1/0-----S1/0--MSR-2--GE0/0----HostB

The network has been correctly configured with the IP address and routing. Currently, HostA and HostB can communicate with each other in the network.

For some security considerations, the customer requires that HostB cannot ping HostA, but at the same time HostA can ping HostB, and the transmission of other messages between HostA and HostB is not restricted, so which of the following statements is correct?

- A. This requirement can be achieved only by configuring ACL on MSR-2
- B. Only configuring ACL on MSR-1 cannot achieve this requirement

- C. When using the ping command, the ICMP packets between the two hosts are bidirectional, and this single intercommunication requirement cannot be realized
- D. This requirement can be achieved only by configuring ACL on MSR-1
- E. Only configuring ACL on MSR-2 cannot achieve this requirement

**Answer: A,D ([LEAVE A REPLY](#))**

**NEW QUESTION: 30**

Which of the following is the correct IPv6 address? (multiple choice)

- A. 2001:410:0:1::45FF
- B. 2001:410::1:0:0:0:45FF
- C. 2001:410:0:1:0:0:0:45FF
- D. 2001:410:0:1:0:0:0:45FF
- E. 2001:410:0:1:45FF

**Answer: ([SHOW ANSWER](#))**

**NEW QUESTION: 31**

There are two hops from the source device to the destination device. Use the tracert command to detect the path. When the first hop is detected, the source device sends a UDP packet with a TTL of 1 to a larger port of the destination device. When the packet reaches the middle hop, the TTL will change to 0, so the device responds to the source device. Respond to an ICMP \_\_\_\_\_ message.

- A. Time Exceeded
- B. Echo Request
- C. Port Unreachable
- D. Echo Reply

**Answer: ([SHOW ANSWER](#))**

**Valid GB0-191-ENU Dumps** shared by PrepPdf.com for Helping Passing GB0-191-ENU Exam! PrepPdf.com now offer the **newest GB0-191-ENU exam dumps**, the PrepPdf.com GB0-191-ENU exam **questions have been updated** and **answers have been corrected** get the **newest** PrepPdf.com GB0-191-ENU dumps with Test Engine here:  
<https://www.preppdf.com/H3C/GB0-191-ENU-prepaway-exam-dumps.html> (434 Q&As Dumps, **40%OFF Special Discount: Exam-Tests**)

**NEW QUESTION: 32**

The transport layer protocol that DNS can use is \_\_\_\_\_.

- A. UDP
- B. TCP or UDP
- C. TCP

D. NCP

Answer: B ([LEAVE A REPLY](#))

**NEW QUESTION: 33**

To set a subnet mask so that 192.168.0.94 and 192.168.0.116 are not in the same network segment, the subnet mask used may be \_\_\_\_\_. (Multiple choice)

A. 255.255.255.192

B. 255.255.255.248

C. 255.255.255.224

D. 255.255.255.240

Answer: ([SHOW ANSWER](#))

**NEW QUESTION: 34**

The IP protocol corresponds to layer \_\_\_\_\_ of the OSI reference model.

A. 3

B. 2

C. 5

D. 1

Answer: A ([LEAVE A REPLY](#))

**NEW QUESTION: 35**

To configure Trunk on the link between Ethernet switches and allow the transmission of VLAN 10 and VLAN 20 information, you must configure \_\_\_\_\_ on the switch.

A. [Switch] port link-type trunk

B. [Switch-Ethernet0/1] port link-type trunk

C. [Switch-Ethernet0/1] port trunk pvid 10

D. [Switch] port link-type access

Answer: B ([LEAVE A REPLY](#))

**NEW QUESTION: 36**

The two routers of the customer are connected back to back by V.35 cables, and one of the routers has the following interface information: [MSR-Serial0/0]display interface Serial 0/0

Serial0/0 current state: UP

Line protocol current state: UP

Description: Serial6/0 Interface

The Maximum Transmit Unit is 1500, Hold timer is 10(sec)

Internet Address is 6.6.6.1/30 Primary

Link layer protocol is PPP

LCP opened, IPCP opened

From the above information, you can know \_\_\_\_\_. (Multiple choice)

**A.** The interface information prompts, the second IP address subordinate can also be configured under this interface

**B.** The PPP PAP or CHAP verification option has been successfully completed between this router and the remote device. It is impossible to see in the question whether there is verification and whether it has passed

**C.** You can already ping the peer's address on this router. 6.6.6.2 It is impossible to judge whether the verification is passed, so the peer's address may not be able to ping

**D.** This router has completed PPP negotiation with the remote device, and successfully established a PPP link

**Answer: A,D ([LEAVE A REPLY](#))**

#### **NEW QUESTION: 37**

The broadcast address of the natural classification network segment corresponding to the IP address 202.135.111.77 is \_\_\_\_\_.

**Answer:**

202.135.111.255

#### **NEW QUESTION: 38**

During system startup, type \_\_\_\_\_ according to the prompt, the system will interrupt booting and enter BootROM mode.

**A.** <Ctrl+c>

**B.** <Ctrl+z>

**C.** <Ctrl+b>

**D.** <Ctrl+a>

**Answer: C ([LEAVE A REPLY](#))**

#### **NEW QUESTION: 39**

802.1x defines the port-based network access control protocol, and only defines the point-to-point connection between the access device and the access port. The access port can only be a physical port.

**A.** correct

**B.** error

**Answer: ([SHOW ANSWER](#))**

#### **NEW QUESTION: 40**

A company's MSR router plans to dial-up to the Internet through ISDN DCC, and the router has the following configuration:

```
[H3C]dialer-rule 1 ip deny
```

```
[H3C]firewall default permit
```

This dialer access control list dialer-rule 1 has been quoted under the dialer interface, so which of the following statements about dialing are wrong?

- A. TCP type packets can trigger dialing
- B. Any IP packet can trigger dialing
- C. No IP packet can trigger dialing
- D. UDP type data packet can trigger dialing

**Answer: A,B,D (LEAVE A REPLY)**

**NEW QUESTION: 41**

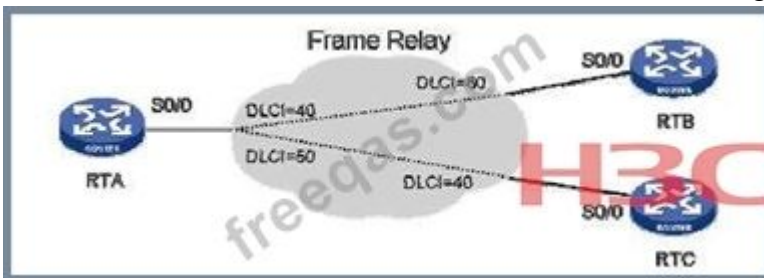
The number of available host addresses contained in the natural classification network segment corresponding to IP address 172.15.1.1 is \_\_\_\_\_. (Please fill in Arabic numerals)

**Answer:**

65534

**NEW QUESTION: 42**

The customer's network connection is shown in the figure.



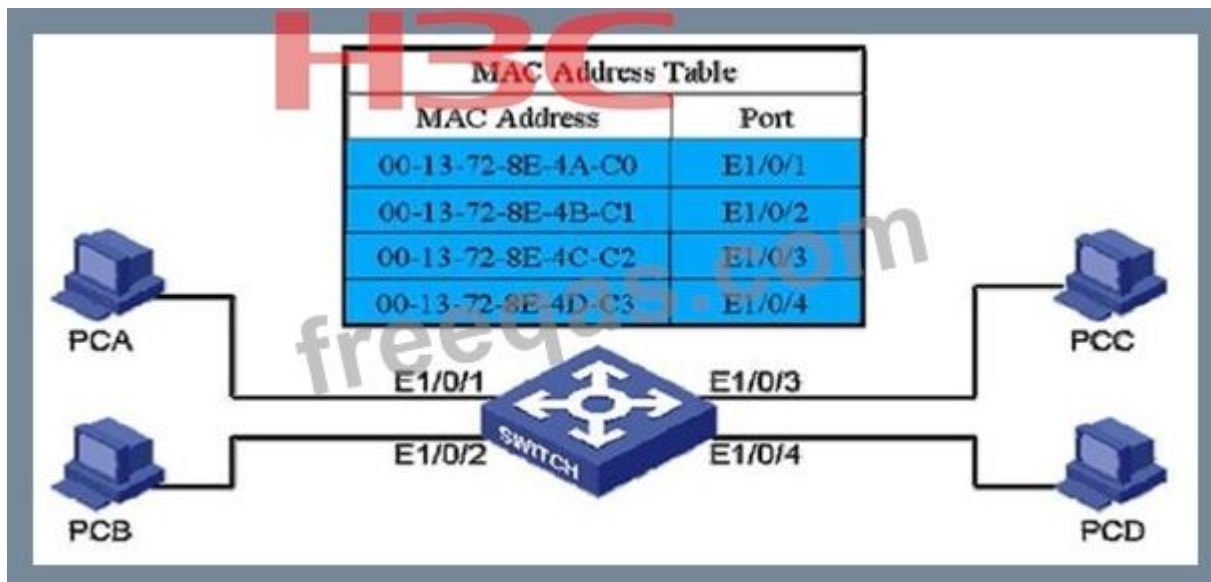
Among them, the IP addresses of RTA, RTB, and RTC are respectively 2.2.2.1/24, 2.2.2.2/24, 2.2.2.3/24. To realize the intercommunication between RTA, RTB and RTC, configure the following frame relay MAP on RTA correct ?

- A. fr map ip 2.2.2.2 40
- B. fr map ip 2.2.2.1 40
- C. fr map ip 2.2.2.1 40 60
- D. fr map ip 2.2.2.3 50

**Answer: (SHOW ANSWER)**

**NEW QUESTION: 43**

The MAC address table on a layer 2 switch is shown in the figure.



When the switch receives a broadcast frame from the E1/0/1 interface, it will \_\_\_\_\_ the frame.  
(Multiple choice)

- A. send out from all interfaces on the switch
- B. Send out from the E1/0/1 interface
- C. Discard directly
- D. send out from E1/0/4 interface
- E. Send out from the E1/0/2 interface
- F. Send out from the E1/0/3 interface

**Answer:** ([SHOW ANSWER](#))

#### NEW QUESTION: 44

When configuring ISDN DCC, the customer configured the following dialer-rule on his MSR router:

```
[MSR] dialer-rule 1 acl 3000
```

Which of the following statements about this configuration are correct? (multiple choice)

- A. Only data packets matching ACL 3000 will be sent by the router through the dial-up link
- B. No permit or deny is defined, configuration error
- C. Only packets matching ACL 3000 can trigger dialing
- D. The correct configuration should be: [MSR] dialer-rule 1 acl 3000 permit

**Answer:** C ([LEAVE A REPLY](#))

#### NEW QUESTION: 45

Two MSR routers implement dynamic routing learning through OSPF. On one of the routers MSR-1, there are three interface IP addresses 192.168.8.1/24, 192.168.13.254/24 and 192.168.29.128/24, so they must pass a network Command to start OSPF on these three interfaces, which of the following configuration is feasible? (multiple choice)

- A. [MSR-1] ospf [MSR-1-ospf-1] area 0 [MSR-1-ospf-1-area-0.0.0.0] network 192.168.1.0 0.0.63.255

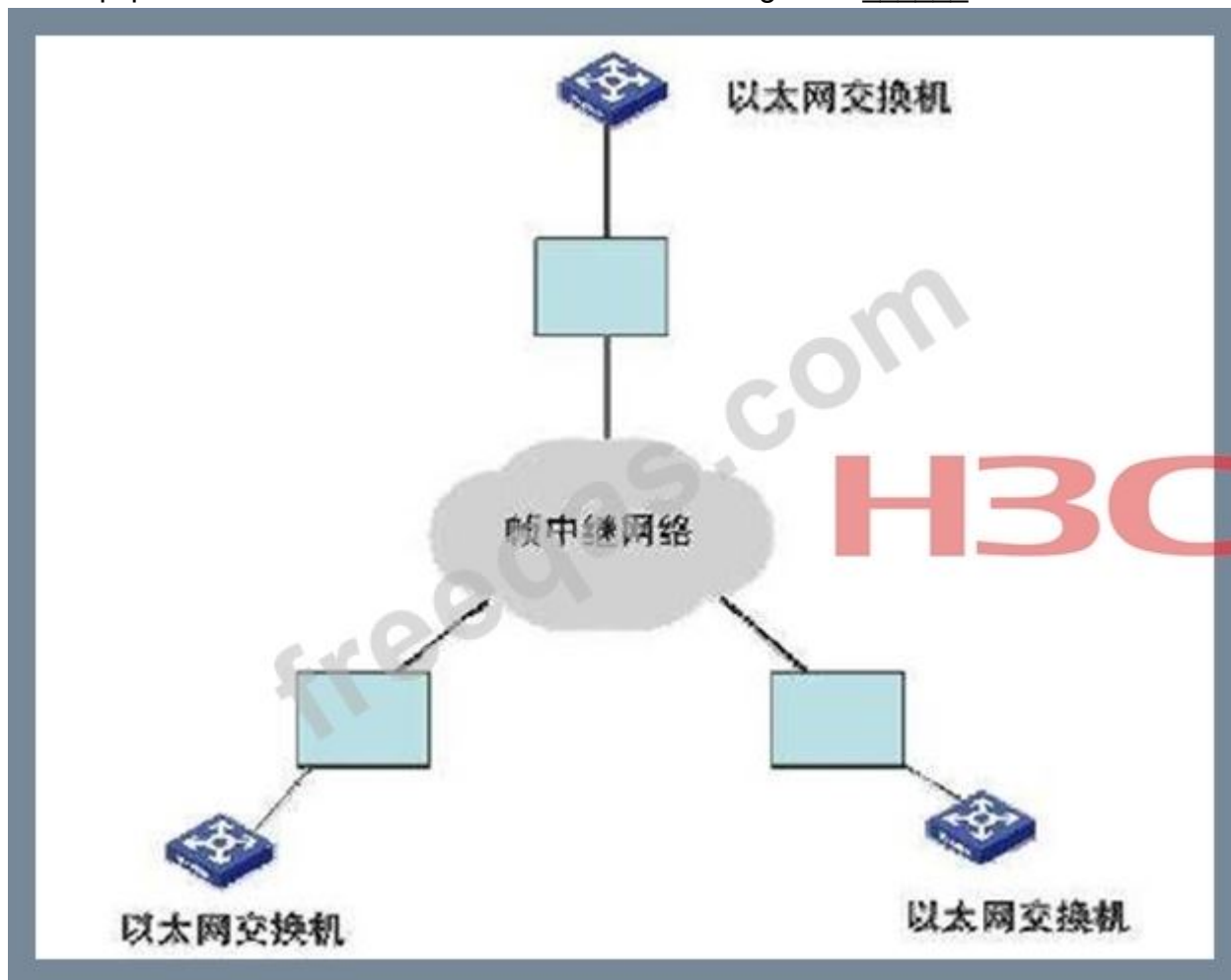
B. [MSR-1] ospf [MSR-1-ospf-1] area 0 [MSR-1-ospf-1-area-0.0.0.0] network 192.168.1.0 0.0.255.255

C. [MSR-1] ospf [MSR-1-ospf-1] area 0 [MSR-1-ospf-1-area-0.0.0.0] network 192.168.1.0 0.0.32.255

Answer: A,B ([LEAVE A REPLY](#))

#### NEW QUESTION: 46

The equipment that should be used in the box in the figure is \_\_\_\_\_.



A. CSU/DSU

B. WAN switch

C. Modem

D. Router

Answer: D ([LEAVE A REPLY](#))

**Valid GB0-191-ENU Dumps** shared by PrepPdf.com for Helping Passing GB0-191-ENU Exam! PrepPdf.com now offer the **newest GB0-191-ENU exam dumps**, the PrepPdf.com GB0-191-ENU exam **questions have been updated** and **answers have been corrected** get the **newest** PrepPdf.com GB0-191-ENU dumps with Test Engine here:

**NEW QUESTION: 47**

WLAN (Wireless LAN) is a combination of computer network and wireless communication technology. Which of the following are WLAN technical standards? (multiple choice)

- A. 802.11c
- B. 802.11a
- C. 802.11b
- D. 802.11g

**Answer: B,C ([LEAVE A REPLY](#))**

**NEW QUESTION: 48**

After executing the display vlan 2 command on the switch SWA, the switch output is as follows:

```
<SWA> display vlan 2
```

```
VLAN ID: 2
```

```
VLAN Type: static
```

```
Route interface: not configured
```

```
Description: VLAN 0002
```

```
Tagged Ports: none
```

```
Untagged Ports:
```

```
Ethernet1/0/1 Ethernet1/0/3 Ethernet1/0/4
```

It can be judged from the above output \_\_\_\_\_. (Multiple choice)

- A. Data frames with VLAN2 tags need to be stripped off when they leave port Ethernet1/0/3
- B. The current VLAN on the switch is only VLAN2 and Vlan1 must exist
- C. VLAN2 contains ports Ethernet1/0/1, Ethernet1/0/3 and Ethernet1/0/4
- D. Port Ethernet1/0/1 is a Trunk port hybrid

**Answer: ([SHOW ANSWER](#))**

**NEW QUESTION: 49**

Use the \_\_\_\_\_ command on the MSR router to turn off the information center function.

- A. undo info-center enable
- B. undo info-center
- C. disable info-center
- D. info-center disable

**Answer: ([SHOW ANSWER](#))**

**NEW QUESTION: 50**

The two WAN interfaces S1/0 and S1/1 of the router MSR-1 are connected to the routers MSR-2 and MSR-3 respectively. At the same time, the Ethernet port of MSR-1 is connected to MSR-4, and all four routers run RIP protocol.

After the network 192.168.0.0 on MSR-1 fails, MSR-1 immediately sends the update message that the route is unreachable to the other three routers. If the suppression time is not considered, then \_\_\_\_\_. (Multiple choice)

- A. RIP's fast convergence mechanism is used on MSR-1
- B. If MSR-1 has not had time to send the update information about this route, and it receives periodic route update information from neighboring routers, then the wrong routing information will be updated on MSR-1
- C. This method of sending update messages immediately cannot completely avoid routing loops when used alone
- D. The trigger update mechanism of RIP is used on MSR-1

**Answer: B,C,D (LEAVE A REPLY)**

#### NEW QUESTION: 51

On the MSR router, use the \_\_\_\_\_ command to view the router's NAT aging time.

- A. display nat expire
- B. display nat time
- C. display nat aging-time
- D. display nat time-out

**Answer: C (LEAVE A REPLY)**

#### NEW QUESTION: 52

The WAN link between the two routers MSR-1 and MSR-2 uses the PPP protocol. The two ends learn each other's routes by configuring RIP. Currently, the route learning is normal. Now the following commands are added to the RIP configuration of MSR-1:

```
[MSR-1-rip-1] silent-interface all
```

So \_\_\_\_\_. (Multiple choice)

- A. After configuring this command, the RIP route in the MSR-1 routing table disappears immediately
- B. This command makes all interfaces of MSR-1 only send routing updates and not accept routing updates
- C. After configuring this command, the RIP route in the MSR-2 routing table disappears immediately
- D. This command makes all interfaces of MSR-1 only receive routing updates without sending routing updates

**Answer: D (LEAVE A REPLY)**

#### NEW QUESTION: 53

Which of the following statements about IP addresses are correct is \_\_\_\_\_. (Multiple choice)

- A. The IP address can be solidified in the hardware and is a unique MAC
- B. IP address is usually expressed in dotted hexadecimal notation, for example: 10.110.192.111
- C. IP address is composed of 32 binary bits

D. IP addresses are divided into five categories: A, B, C, D, E

**Answer: C,D (LEAVE A REPLY)**

**NEW QUESTION: 54**

In a PPP connection, what is wrong about NCP is \_\_\_\_\_.

- A. NCP is used to negotiate the format and type of data packets transmitted on the data link
- B. NCP can be configured with different network layer protocols
- C. NCP is used to negotiate authentication method
- D. NCP is used to establish, tear down and monitor data links

**Answer: C,D (LEAVE A REPLY)**

**NEW QUESTION: 55**

The WAN link between the only two routers MSR-1 and MSR-2 in the customer network adopts the PPP protocol, and the two ends learn each other's routes by configuring RIP. Currently, the route learning is normal, and now it is in the RIP of MSR-1. The following commands are added to the configuration:

```
[MSR-1-rip-1] silent-interface all
```

So \_\_\_\_\_. (Multiple choice)

- A. 10 minutes after configuring this command, the RIP route in the MSR-1 routing table disappears
- B. 10 minutes after configuring this command, the RIP route in the MSR-2 routing table disappears
- C. This command makes all interfaces of MSR-1 only send routing updates and not accept routing updates
- D. This command makes all interfaces of MSR-1 only receive routing updates without sending routing updates

**Answer: B,D (LEAVE A REPLY)**

**NEW QUESTION: 56**

The correct statement below is \_\_\_\_\_. (Multiple choice)

- A. In the active transfer mode of FTP, the FTP client actively establishes a data connection to the server
- B. The passive transfer mode of FTP uses the PASV command
- C. The passive transfer mode of FTP uses the PORT command
- D. FTP server and client in passive transmission mode use temporary ports to establish data connections
- E. In the active transmission mode of FTP, the FTP server actively establishes a data connection to the client

**Answer: B,D,E (LEAVE A REPLY)**

**NEW QUESTION: 57**

It is required to set a subnet mask to divide the Class B network 172.16.0.0 into as many subnets as possible. Each subnet requires 15 hosts, so the subnet mask should be \_\_\_\_\_. (Dotted decimal format) slightly

**Answer:**

255.255.255.224

**NEW QUESTION: 58**

The IP address of a private network device A is 192.168.1.1/24, and its corresponding public network IP address is 2.2.2.1; the IP address of public network device B is 2.2.2.5. If you want B to be able to ping A, which of the following configurations can be used on the NAT device?

- A. acl number 2000 rule 0 permit source 192.168.1.1 0.0.0.255 nat address-group 1 2.2.2.1 interface Ethernet 0/1 nat outbound 2000 address-group 1 no-pat
- B. nat server protocol icmp global 2.2.2.1 inside 192.168.1.1
- C. acl number 2000 rule 0 permit source 192.168.1.1 0.0.0.255 nat address-group 1 2.2.2.1 interface Ethernet 0/1 nat outbound 2000 address-group 1
- D. nat server protocol icmp global 192.168.1.1 inside 2.2.2.1

**Answer: (SHOW ANSWER)**

**NEW QUESTION: 59**

Use the display nat session command to view the NAT information, the display is as follows:

There are currently 4 NAT sessions

Protocol GlobalAddr Port InsideAddr Port DestAddr Port

-198.80.28.11 --- 10.0.0.2 --- --- ---

VPN: 0, status: NOPAT, TTL: 00:04:00, Left: 00:04:00

-198.80.28.12 --- 10.0.0.1 --- --- ---

VPN: 0, status: NOPAT, TTL: 00:04:00, Left: 00:03:59

1 198.80.28.12 1024 10.0.0.1 1024 198.80.29.4 1024

VPN: 0, status: NOPAT, TTL: 00:01:00, Left: 00:00:59

1 198.80.28.11 512 10.0.0.2 512 198.80.29.4 512

VPN: 0, status: NOPAT, TTL: 00:01:00, Left: 00:01:00

This information shows that the private network address is \_\_\_\_\_. (Multiple choice)

- A. 192.80.28.11
- B. 10.0.0.1
- C. 192.80.28.12
- D. 10.0.0.2
- E. 192.80.29.4

**Answer: B,D (LEAVE A REPLY)**

**NEW QUESTION: 60**

It is required to set a subnet mask to divide a class B network 172.16.0.0 into seven subnets, and each subnet should contain as many hosts as possible, so the subnet mask should be \_\_\_\_\_.  
(Dotted decimal format) slightly

**Answer:**

255.255.224.0

### NEW QUESTION: 61

As shown in the figure, S3610 switch SWA uses ports E1/0/1 and E1/0/2 to connect to another switch SWB. In order to increase bandwidth, static link aggregation needs to be configured on the switch.

Which of the following configuration is correct? (multiple choice)



- A. [SWA]interface bridge-aggregation 1 port Ethernet1/0/1 Ethernet1/0/2
- B. [SWA] interface bridge-aggregation 1
- C. [SWA-Ethernet1/0/2] interface bridge-aggregation 1
- D. [SWA-Ethernet1/0/1] port link-aggregation group 1

**Answer: B,D (LEAVE A REPLY)**

**Valid GB0-191-ENU Dumps** shared by PrepPdf.com for Helping Passing GB0-191-ENU Exam! PrepPdf.com now offer the **newest GB0-191-ENU exam dumps**, the PrepPdf.com GB0-191-ENU exam **questions have been updated** and **answers have been corrected** get the **newest** PrepPdf.com GB0-191-ENU dumps with Test Engine here:

<https://www.preppdf.com/H3C/GB0-191-ENU-prepaway-exam-dumps.html> (434 Q&As Dumps,

**40%OFF Special Discount: Exam-Tests**)

### NEW QUESTION: 62

The TFTP protocol is a protocol based on \_\_\_\_\_.

- A. TCP
- B. IPX
- C. SSH
- D. UDP

**Answer: (SHOW ANSWER)**

**NEW QUESTION: 63**

The two MSR routers are interconnected through their respective WAN interface S1/0, and RIPv2 is running on the two routers to dynamically complete the remote routing of each other. Now for security reasons, it is necessary to add verification on the RIP, so which of the following is the RIP configuration correct?

- A. [MSR-serial1/0]rip authentication-mode simple 123
- B. [MSR]rip authentication-mode simple 123
- C. [MSR-rip-2]rip authentication-mode simple 123
- D. [MSR-rip-1] rip authentication-mode simple 123

**Answer: A** ([LEAVE A REPLY](#))

**NEW QUESTION: 64**

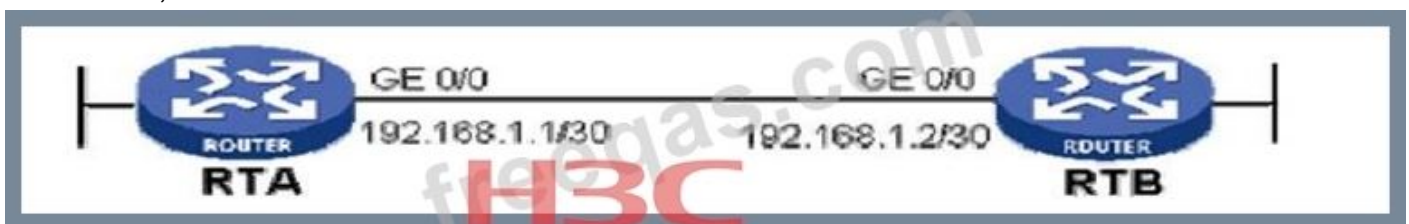
The network administrator of a certain enterprise needs to set a subnet mask to divide the class C network 211.110.10.0 that he is responsible for into at least 8 subnets. How many subnet masks can be used for division? (multiple choice)

- A. 28
- B. 26
- C. 25
- D. 29
- E. 27

**Answer: A,D,E** ([LEAVE A REPLY](#))

**NEW QUESTION: 65**

The two empty-configured MSR routers are connected as shown in the figure. By configuring the IP address, the GE0/0 interfaces of the two routers can communicate with each other.



Now the following configurations are added to the two routers respectively:

RTA:

```
[RTA]ospf
[RTA-ospf-1]area 0
[RTA-ospf-1-area-0.0.0.0]network 192.168.1.1 0.0.0.3
[RTA-GigabitEthernet0/0]ospf dr-priority 2
```

RTB:

```
[RTB]ospf [RTB-ospf-1]area 0
[RTB-ospf-1-area-0.0.0.0]network 192.168.1.1 0.0.0.3
[RTB-GigabitEthernet0/0]ospf dr-priority
```

Then after the OSPF neighbor status is stable, \_\_\_\_\_.

- A. OSPF interfaces have the same priority, and no OSPF DR election is performed on the 192.168.1.0/30 network segment
- B. Of the two routers, one is DR and the other is BDR
- C. Of the two routers, one is DR and the other is DRother
- D. The neighbor status of the two routers are FULL and 2-Way respectively

**Answer:** ([SHOW ANSWER](#))

#### **NEW QUESTION: 66**

Which of the following statements about optical fiber is wrong? (multiple choice)

- A. Multimode fiber can transmit light of different wavelengths and different incident angles
- B. Multimode fiber has a thinner core
- C. The cost of multimode fiber is lower than that of single mode fiber
- D. When using multi-mode fiber, the maximum signal transmission distance is longer than single-mode fiber

**Answer:** B,D ([LEAVE A REPLY](#))

#### **NEW QUESTION: 67**

Connect the two switches with an Ethernet cable, and the MDI type of the interconnection port is configured as across, then the Ethernet cable should be \_\_\_\_\_.

- A. Only use a straight-through network cable
- B. Both parallel and crossover cables are available
- C. Only use crossover cable
- D. Parallel network cable and cross network cable are not acceptable

**Answer:** C ([LEAVE A REPLY](#))

#### **NEW QUESTION: 68**

The 802.11b protocol defines 14 channels in the 2.4GHz frequency band, and there is overlap in the frequency spectrum between adjacent channels. In order to maximize the use of frequency band resources, which set of channels can be used for wireless coverage?

- A. 2, 7, 12
- B. 3, 6, 9
- C. 1, 5, 9
- D. 1, 6, 10

**Answer:** A ([LEAVE A REPLY](#))

#### **NEW QUESTION: 69**

The Ethernet port Ethernet1/0 of the customer router MSR-1 is configured as follows:

```
interface Ethernet0/0
```

```
ip address 192.168.0.1 255.255.255.0
```

This interface is connected to a three-layer switch, and this three-layer switch is where the default gateway of the network segment 192.168.7.0/24~192.168.83.0/24 of the customer's office network is located.

Now the customer requires that an ACL be configured on the MSR-1 to prohibit all users on the office network from initiating Telnet to the address 192.168.0.1 of the MSR-1, so which of the following configurations is correct?

- A.** acl number 3000 rule 0 deny 0.0.0.0 255.255.255.255 destination 192.168.0.1 0 destination-port eq telnet interface Ethernet0/0 ip address 192.168.0.1 255.255.255.0 firewall packet-filter 3000 inbound
- B.** acl number 3000 rule 0 deny 255.255.255.255 0 destination 192.168.0.1 0 destination-port eq telnet interface Ethernet0/0 ip address 192.168.0.1 255.255.255.0 firewall packet-filter 3000 outbound
- C.** acl number 3000 rule 0 deny 0.0.0.0 255.255.255.255 destination 192.168.0.1 0 destination-port eq telnet interface Ethernet0/0 ip address 192.168.0.1 255.255.255.0 firewall packet-filter 3000 outbound
- D.** acl number 3000 rule 0 deny 255.255.255.255 0 destination 192.168.0.1 0 destination-port eq telnet interface Ethernet0/0 ip address 192.168.0.1 255.255.255.0 firewall packet-filter 3000 inbound

**Answer:** ([SHOW ANSWER](#))

#### **NEW QUESTION: 70**

If the IP address of a host is 130.25.3.135 and the subnet mask is 255.255.255.192, then the network address of the subnet where the host is located is \_\_\_\_\_.

- A.** 130.25.3.0
- B.** 130.25.3.255
- C.** 130.25.0.0
- D.** 130.25.3.128

**Answer:** **D** ([LEAVE A REPLY](#))

#### **NEW QUESTION: 71**

The three MSR routers RTA, RTB, and RTC are connected to the same frame relay network through their respective S1/0 interfaces. This frame relay network can provide enough PVC resources. As a network engineer, you need to assign IP addresses to these frame relay interfaces.

Which of the following statements are correct? (multiple choice)

- A.** If it is not allowed to transit through any router, at least three IP subnets are required to realize the two-by-two communication of the three routers through this frame relay network
- B.** If transit through any router is not allowed, at least two IP subnets are required to enable three routers to communicate with each other through this frame relay network
- C.** Under the premise of correct routing configuration, three routers can communicate through this frame relay network without configuring sub-interfaces.

D. Under the premise of correct routing configuration, three routers can communicate through this frame relay network with only one IP subnet.

**Answer: B,C,D ([LEAVE A REPLY](#))**

**NEW QUESTION: 72**

The command to change the link encapsulation from PPP to HDLC on the MSR router is \_\_\_\_\_.

- A. link-protocol hdlc
- B. line hdlc
- C. encapsulation hdlc
- D. line-protocol hdlc

**Answer: A ([LEAVE A REPLY](#))**

**NEW QUESTION: 73**

The FTP protocol is a protocol based on \_\_\_\_\_.

- A. TCP
- B. PX
- C. UDP
- D. SSH

**Answer: ([SHOW ANSWER](#))**

**NEW QUESTION: 74**

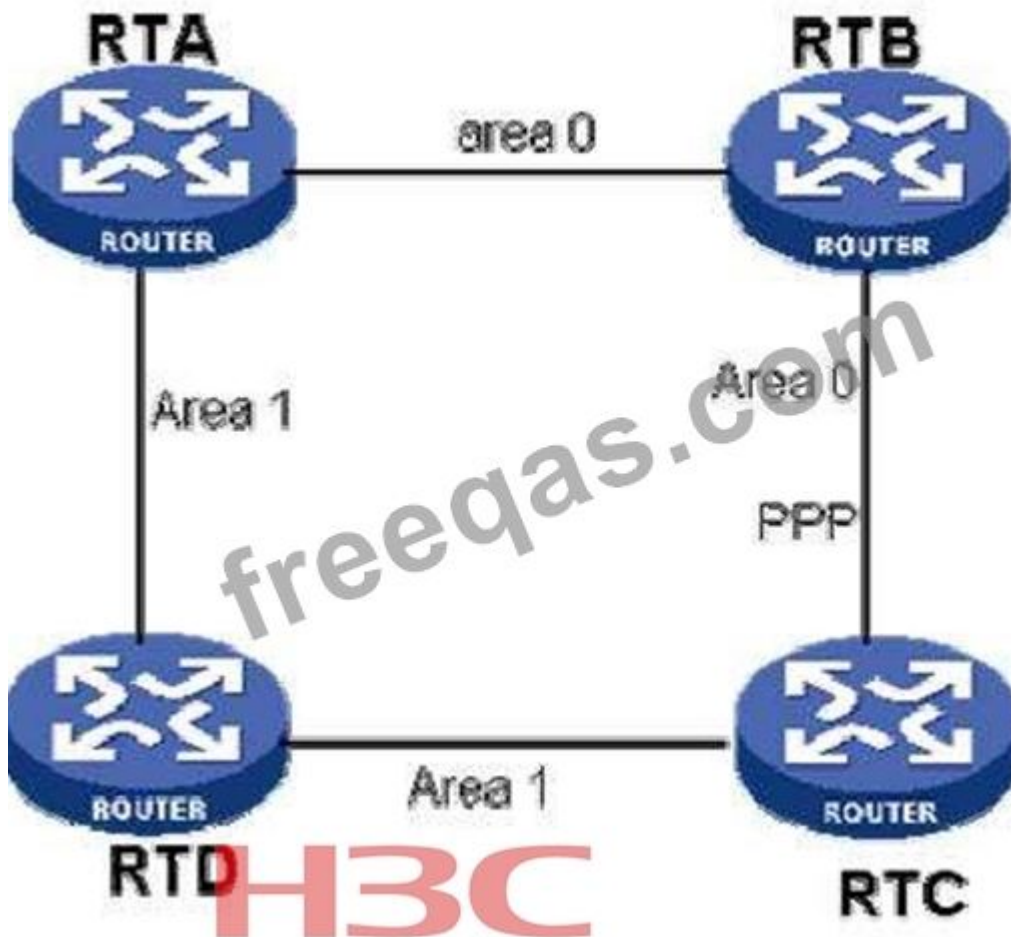
Use the \_\_\_\_\_ command on the MSR series router to display the current path of the file system.

- A. current-path
- B. dir
- C. pwd
- D. path

**Answer: C ([LEAVE A REPLY](#))**

**NEW QUESTION: 75**

As shown in the figure, four MSR routers are connected via Ethernet and serial interfaces, and OSPF is running in the network at the same time. The area is divided as shown in the figure.



It is known that the OSPF Cost value of all interconnection links is the same, except that the link between RTB and RTC is PPP, the other interconnection links are all Ethernet. So \_\_\_\_\_. (Multiple choice)

- A. After the state is stable, the four routers have the same LSDB
- B. There are at least three DRs in the network
- C. There are at least three BDRs in the network
- D. If the link between RTD and RTC fails, RTD and RTC will immediately send LSA summary information to RTA and RTB without waiting for a fixed LSA update cycle

**Answer: B,C,D (LEAVE A REPLY)**

#### NEW QUESTION: 76

The following statement about STP is correct. \_\_\_\_\_. (Multiple choice)

- A. STP can activate the blocked redundant backup link to restore network connectivity when the current active path fails
- B. STP eliminates possible path loops in the network by blocking redundant links in the network
- C. In a complex network, STP consumes a lot of processing resources, causing the network to fail to work normally.
- D. STP information transfer is realized by transferring BPDUs between bridges running STP

**Answer: A,B,D (LEAVE A REPLY)**

**Valid GB0-191-ENU Dumps** shared by PrepPdf.com for Helping Passing GB0-191-ENU Exam! PrepPdf.com now offer the **newest GB0-191-ENU exam dumps**, the PrepPdf.com GB0-191-ENU exam **questions have been updated** and **answers have been corrected** get the **newest** PrepPdf.com GB0-191-ENU dumps with Test Engine here:  
<https://www.preppdf.com/H3C/GB0-191-ENU-prepaway-exam-dumps.html> (434 Q&As Dumps, **40%OFF Special Discount: Exam-Tests**)

**NEW QUESTION: 77**

PPP has to go through a series of negotiation processes before establishing a link. The correct negotiation sequence is \_\_\_\_\_.

- A. NCP>LCP>PAP/CHAP
- B. LCP> NCP>PAP/CHAP
- C. LCP>PAP/Chap>NCP
- D. PAP/CHAP>LCP>NCP

**Answer: C (LEAVE A REPLY)**

**NEW QUESTION: 78**

A network connection is like:

HostA---GE0/0--MSR-1--S1/0-----S1/0--MSR-2--GE0/0---HostB

Two MSR routers MSR-1 and MSR-2 are interconnected back-to-back through their S1/0 interfaces, and their GE0/0 interfaces are respectively connected to the client hosts HostA and HostB. The IP address of HostA is 192.168.0.2/24, and the address of the S0/0 interface of MSR-2 is 1.1.1.2/30. By configuring other relevant IP addresses and routes, HostA can communicate with HostB in the current network.

Nowadays, the customer requires that HostA is not allowed to log in to the MSR-2 through Telnet at address 1.1.1.2.

So which of the following configurations can meet this requirement? (multiple choice)

- A. Configure the following ACL on MSR-1 and apply it to the outbound direction of GE0/0 of MSR-1: [MSR-1]firewall enable [MSR-1]acl number 3000 [MSR-1-acl- adv-3000]rule 0 deny tcp source 192.168.0.2 0 destination 1.1.1.2 0 destination-port eq telnet
- B. Configure the following ACL on MSR-1 and apply it to the outbound direction of S1/0 of MSR-1: [MSR-1]firewall enable [MSR-1]acl number 3000 [MSR-1-acl- adv-3000]rule 0 deny tcp source 192.168.0.2 0 destination 1.1.1.2 0.0.0.3 destination-port eq telnet
- C. Configure the following ACL on MSR-1 and apply it to the inbound direction of S1/0 of MSR-1: [MSR-1]firewall enable [MSR-1]acl number 3000 [MSR-1-acl- adv-3000]rule 0 deny tcp source 192.168.0.1 0.0.0.255 destination 1.1.1.2 0 destination-port eq telnet
- D. Configure the following ACL on MSR-1 and apply it to the inbound direction of GE0/0 of MSR-1: [MSR-1]firewall enable [MSR-1]acl number 3000 [MSR-1-acl-adv -3000]rule 0 deny tcp source 192.168.0.1 0.0.0.255 destination 1.1.1.2 0.0.0.3 destination-port eq telnet

**Answer: B,D (LEAVE A REPLY)**

**NEW QUESTION: 79**

The Serial 0/0 and Serial 0/1 interfaces of the router of the Shenzhen branch of XYZ Company are connected to two different ISPs through two WAN lines. Both of these ISPs can visit the website of the Beijing head office at 202.102.100.2.

The following static routes are configured on the routers of the Shenzhen branch:

```
ip route-static 202.102.100.2 24 Serial 0/0
```

```
ip route-static 202.102.100.2 24 Serial 0/1
```

So which of the descriptions of these two routes is correct? (multiple choice)

- A. The traffic to Beijing can achieve load sharing through these two routes
- B. Only the first route will be written in the router's routing table
- C. Only the second route will be written in the router's routing table
- D. The two routes to Beijing can back up each other

**Answer: (**[SHOW ANSWER](#)**)**

**NEW QUESTION: 80**

The routers MSR-1 and MSR-2 are interconnected through their respective GigabitEthernet0/0, and RIP is running between the two routers. At present, RIP has correctly completed remote routing learning. Now you can see the following in the routing table of MSR-1 The routing information:

```
Destination/Mask Proto Pre Cost NextHop Interface
```

```
2.0.0.0/24 RIP 100 15 100.1.1.1 GE0/0
```

```
6.0.0.0/8 RIP 100 1 100.1.1.1 GE0/0
```

Then based on this information, \_\_\_\_\_ can be inferred.

- A. The cost of the route whose network segment of the first entry is 2.0.0.0/24 has reached the maximum value and is an invalid route
- B. The route whose network segment of the first entry is 2.0.0.0/24 is still a valid route
- C. It can be confirmed that RIPv2 is running between the two routers
- D. It can be confirmed that RIPv1 is running between the two routers

**Answer: B,C (**[LEAVE A REPLY](#)**)**

**NEW QUESTION: 81**

The IPv6 site local address belongs to the \_\_\_\_\_ address type.

- A. Multicast
- B. Unicast
- C. Broadcast
- D. Anycast

**Answer: (**[SHOW ANSWER](#)**)**

**NEW QUESTION: 82**

According to the different ways the switch processes VLAN data frames, the port types of H3C Ethernet switches are divided into \_\_\_\_\_. (Multiple choice)

- A. trunk port
- B. Mirror port
- C. access port
- D. monitor port
- E. hybrid port

**Answer: A,C,E ([LEAVE A REPLY](#))**

**NEW QUESTION: 83**

The IP address 203.108.2.110 is the \_\_\_\_\_ address.

- A. Type C
- B. Type A
- C. Type B
- D. Class D

**Answer: ([SHOW ANSWER](#))**

**NEW QUESTION: 84**

For the understanding of packet switching, the correct one of the following statements is \_\_\_\_\_. (Multiple choice)

- A. Packet switching includes frame-based packet switching and cell-based packet switching
- B. Packet switching is a switching method based on cut-through switching
- C. Each packet carries the address identification of the receiver and the sender, and the packet can be forwarded directly without any operation, thereby improving efficiency
- D. The transmitted information is divided into packets of a certain length and forwarded in units of packets

**Answer: A,D ([LEAVE A REPLY](#))**

**NEW QUESTION: 85**

Use the \_\_\_\_\_ command to configure static routes on the MSR router.

- A. static-route
- B. route-static
- C. ip route-static
- D. ip static-route

**Answer: C ([LEAVE A REPLY](#))**

**NEW QUESTION: 86**

The following statement about the upgrade of H3C network equipment is correct \_\_\_\_\_. (Multiple choice)

- A. Use Xmodem to upgrade to the same speed as FTP

**B.** When the device cannot boot to the command line mode and needs to upgrade the operating system software, Xmodem and TFTP can be used

**C.** In an environment where the complex interaction between the client and the server is not convenient, you can use TFTP to upgrade

**D.** When using FTP to upgrade, the device can be used as an FTP server or client

**Answer:** ([SHOW ANSWER](#))

#### **NEW QUESTION: 87**

On the MSR router, you can use the \_\_\_\_\_ command to clear the NAT session table entries.

**A.** reset nat session

**B.** reset nat table

**C.** clear nat session

**D.** clear nat

**Answer:** **A** ([LEAVE A REPLY](#))

#### **NEW QUESTION: 88**

When viewing the configuration, if there are many configuration commands and one screen cannot be displayed completely, after displaying one screen, you can press \_\_\_\_ to display the next page.

**A.** <Enter> key

**B.** <Ctrl+p> key

**C.** <Space> key

**D.** <Ctrl+c> key

**Answer:** ([SHOW ANSWER](#))

#### **NEW QUESTION: 89**

There are many kinds of WAN interfaces. The following description of the WAN interface is wrong.

**A.** The V.24 protocol interface can work in both synchronous and asynchronous modes. In the asynchronous mode, the link layer uses PPP encapsulation.

**B.** The G.703 interface provides high-speed data synchronous communication services.

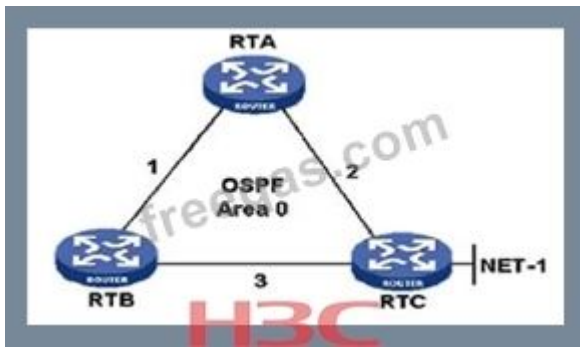
**C.** BRI/PRI interface is used for ISDN access, the default link encapsulation is PPP

**D.** The V.35 protocol interface can work in both synchronous and asynchronous modes. In the asynchronous mode, the link layer uses PPP encapsulation.

**Answer:** **D** ([LEAVE A REPLY](#))

#### **NEW QUESTION: 90**

The three MSR routers are connected as shown in the figure.



All three routers belong to OSPF Area 0, and at the same time, the interconnection network segments of the three routers are advertised in Area 0 through the network command. On RTC, the network segment NET-1 is also published in OSPF Area 0 through the network command. The OSPF Cost between the three routers is shown in the figure.

At present, the neighbor status of the three routers is stable, so \_\_\_\_\_. (Multiple choice)

- A. After the network status is stable, within the next 45 minutes, only Hello packets will be transmitted between OSPF neighbors on the network
- B. There is only one OSPF route to the NET-1 network segment in the RTA routing table
- C. There are two OSPF routes to the destination network segment NET-1 in the RTB routing table
- D. For RTB, to reach the destination network segment NET-1 will give priority to RTB--->RTC path

**Answer: B,C (LEAVE A REPLY)**

### NEW QUESTION: 91

The customer's network connection looks like:

HostA---GE0/0--MSR-1--S1/0----WAN----S1/0--MSR-2--GE0/0----HostB

The two MSR routers are interconnected through the WAN, and the physical connection is now normal. The address of interface S1/0 of MSR-1 is 3.3.3.1/30, and the address of interface S1/0 of MSR-2 is 3.3.3.2/30. Now the following 4 static routes are configured on MSR-1:

```
ip route-static 192.168.1.0 255.255.255.0 3.3.3.2
ip route-static 192.168.2.0 255.255.255.0 3.3.3.2
ip route-static 192.168.3.0 255.255.255.0 3.3.3.2
ip route-static 192.168.4.0 255.255.255.0 3.3.3.2
```

The 192.168.0.0/22 subnet is the LAN user network segment of MSR-2.

So which of the following descriptions are wrong? (multiple choice)

- A. These four routes will be written into the routing table of MSR-1
- B. Only the fourth route will be written into the routing table of MSR-1
- C. These four routes can be replaced by one route ip route-static 192.168.1.0 255.255.252.0 3.3.3.2
- D. Only the first route will be written into the routing table of MSR-1

**Answer: B,C,D (LEAVE A REPLY)**

**Valid GB0-191-ENU Dumps** shared by PrepPdf.com for Helping Passing GB0-191-ENU Exam! PrepPdf.com now offer the **newest GB0-191-ENU exam dumps**, the PrepPdf.com GB0-191-ENU exam **questions have been updated** and **answers have been corrected** get the **newest** PrepPdf.com GB0-191-ENU dumps with Test Engine here:  
<https://www.preppdf.com/H3C/GB0-191-ENU-prepaway-exam-dumps.html> (434 Q&As Dumps, **40%OFF Special Discount: Exam-Tests**)

#### NEW QUESTION: 92

The customer's network connection looks like:

HostA---GE0/0--MSR-1--S1/0----WAN----S1/0--MSR-2--GE0/0----HostB

It is known that the IP address of GE0/0 of MSR-2 is 2.2.2.1/24. The network is currently operating normally, and the hosts HostA and HostB on both sides can communicate with each other. Now the following routing is configured on MSR-2:

```
ip route-static 2.2.2.1 24 NULL 0
```

So \_\_\_\_\_. (Multiple choice)

- A. You can still ping 2.2.2.1 on MSR-1
- B. HostA cannot ping 2.2.2.1
- C. Can't ping through MSR-1 2.2.2.1
- D. HostA can still ping 2.2.2.1

**Answer: A,D (LEAVE A REPLY)**

#### NEW QUESTION: 93

If you want to set the frame relay LMI type to ANSI, you should \_\_\_\_\_.

- A. Use the command `fr lmi class ansi` in interface mode
- B. Use the command `fr lmi class ansi` in system mode
- C. Use the command `fr lmi type ansi` in interface mode
- D. Use the command `fr lmi type ansi` in system mode

**Answer: C (LEAVE A REPLY)**

#### NEW QUESTION: 94

The IP address 10.0.10.65 and the mask 255.255.255.224 represent a \_\_\_\_\_.

- A. host address
- B. None of the above
- C. Network address
- D. Broadcast address

**Answer: (SHOW ANSWER)**

#### NEW QUESTION: 95

Divide a class C network segment into subnets. If the subnet mask is 28 bits, then the maximum number of hosts that can be accommodated in each subnet is \_\_\_\_\_. (Please fill in Arabic numerals)

**Answer:**

14

**NEW QUESTION: 96**

Two empty-configured MSR routers are directly connected back-to-back through their respective WAN Serial1/0 interfaces, and their interconnection network segment is 192.0.0.0/24.

At the same time, the two routers are connected to their respective LAN segment users through their respective GigabitEthernet0/0:

HostA---GE0/0--MSR-1--S1/0-----S1/0--MSR-2--GE0/0----HostB

Configure RIPv1 on the two routers, and now both routers have learned the RIP route of the opposite LAN segment. So which of the following statements are correct?

**A.** If the LAN segment of one of the routers is 10.0.0.0/24, then the routing table of the other router will learn the route of 10.0.0.0/8

**B.** CHAP authentication can be configured on the WAN interface of the two routers to enhance network security

**C.** The way to exchange RIP packets between the two routers is multicast

**D.** RIP packets between two routers are transmitted based on TCP

**Answer: A,B (LEAVE A REPLY)**

**NEW QUESTION: 97**

The correct sequence of the steps in the startup process of detecting the router system is \_\_\_\_\_. (Fill in the code of each step one by one, there can be no spaces in between, such as: ABCD)

**A.** Unzip the application

**B.** Application loading

**C.** Start bootrom

**D.** Memory

**Answer:**

DCAB

**NEW QUESTION: 98**

SPX belongs to the \_\_\_\_\_ of the OSI reference model.

**A.** Network layer

**B.** Session layer

**C.** Transport layer

**D.** Presentation layer

**Answer: C (LEAVE A REPLY)**

**NEW QUESTION: 99**

In subnet division, which part of the natural classification IP address is occupied by the subnet number?

- A. Subnet number part
- B. host number part
- C. Network number part
- D. None of the above is correct

**Answer:** ([SHOW ANSWER](#))

**NEW QUESTION: 100**

The customer's network connection looks like:

HostA---GE0/0--MSR-1--S1/0-----WAN-----S1/0--MSR-2--GE0/0----HostB

The two MSR routers are interconnected through the WAN, and the physical connection is now normal. The address of interface S1/0 of MSR-1 is 3.3.3.1/30, and the address of interface S1/0 of MSR-2 is 3.3.3.2/30. Now the following three static routes are configured on MSR-1:

```
ip route-static 192.168.1.0 255.255.255.0 3.3.3.2
```

```
ip route-static 192.168.2.0 255.255.255.0 3.3.3.2
```

```
ip route-static 192.168.0.0 255.255.255.0 3.3.3.2
```

The 192.168.0.0/22 subnet is the local area network segment where the host HostB is located.

So which of the following descriptions are correct? (multiple choice)

- A. Only the first route will be written into the routing table of MSR-1
- B. Only the third route will be written into the routing table of MSR-1
- C. All three routes will be written into the routing table of MSR-1
- D. These three routes can be replaced by one route `ip route-static 192.168.0.0 255.255.252.0 3.3.3.2`

**Answer:** C,D ([LEAVE A REPLY](#))

**NEW QUESTION: 101**

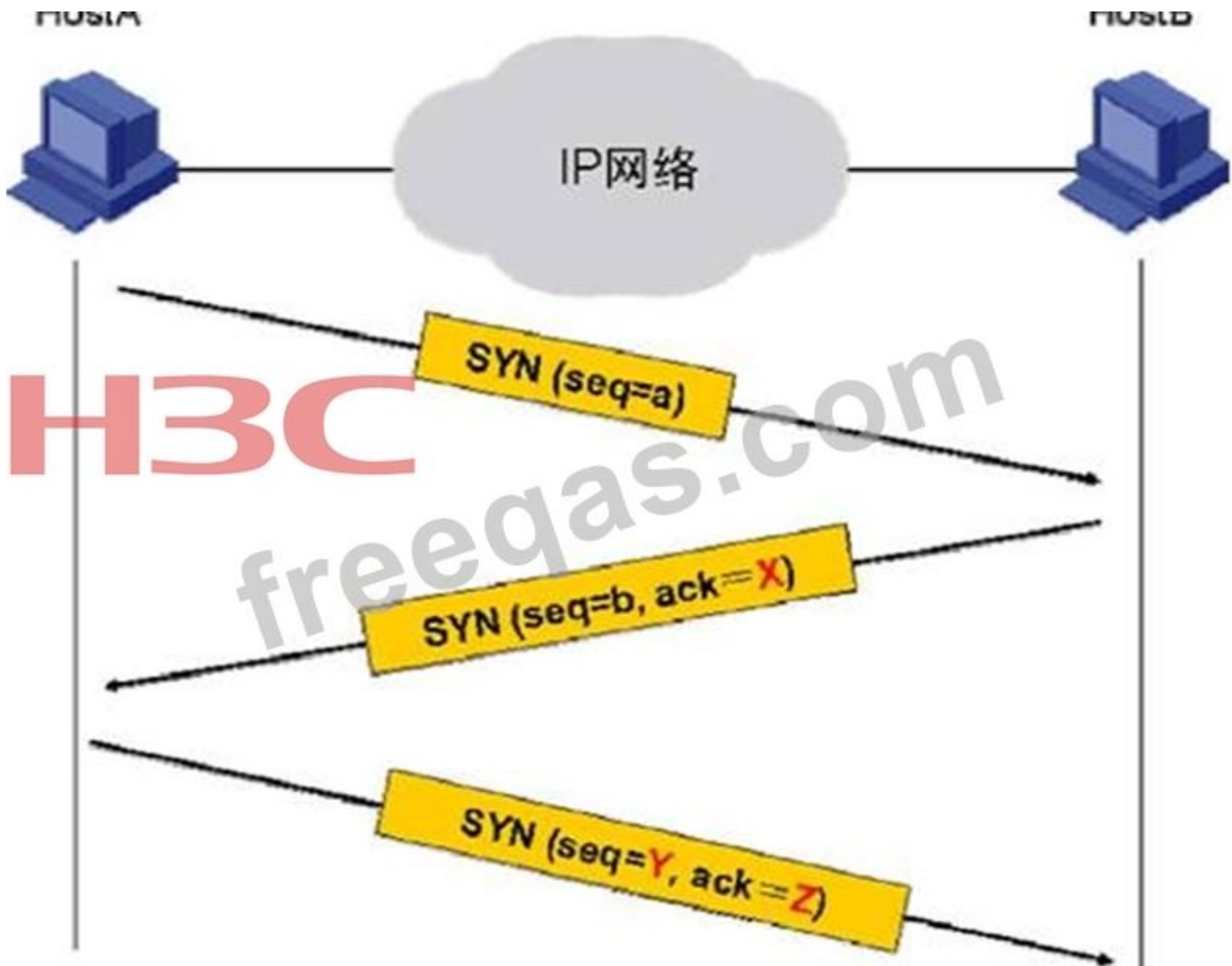
NAPT mainly converts the \_\_\_\_\_ information of the data packet? (multiple choice)

- A. Data link layer
- B. Transport layer
- C. Application layer
- D. Network layer

**Answer:** B,D ([LEAVE A REPLY](#))

**NEW QUESTION: 102**

During the establishment of the TCP connection as shown in the figure, the X part of the SYN should be filled with \_\_\_\_\_.



- A. a
- B. b+1
- C. b
- D. a+1

Answer: ([SHOW ANSWER](#))

### NEW QUESTION: 103

The two routers RTA and RTB are interconnected back-to-back using serial ports. The serial port of RTA is configured with HDLC protocol, and the serial port of RTB is configured with PPP protocol.

Both devices are configured with the correct IP address, then what will happen is \_\_\_\_\_.

(Multiple choice)

- A. RTB serial port physical layer up, protocol layer down
- B. RTA serial port physical layer down, protocol layer down
- C. The physical and protocol layers of RTA and RTB serial ports are both down
- D. The physical layer of the RTA serial port is up, and the protocol layer remains up, but RTA cannot ping RTB
- E. The physical layer of the RTB serial port is down, and the protocol layer is down.

Answer: ([SHOW ANSWER](#))

**NEW QUESTION: 104**

The following description of Trunk ports and links is wrong. \_\_\_\_\_. (Multiple choice)

- A. When the Trunk port sends a data frame, if the data frame does not have a VLAN ID, add the corresponding PVID value to the data frame as the VLAN ID
- B. The PVID value of the Trunk port cannot be modified
- C. The data frames transmitted on the Trunk link are all with VLAN ID
- D. Trunk link can carry data frames with different VLAN IDs

Answer: A,B,C ([LEAVE A REPLY](#))

**NEW QUESTION: 105**

Which of the following statements about MAC addresses are wrong? (multiple choice)

- A. Usually only terminal hosts need MAC addresses, routers and other network devices do not need
- B. The MAC address is solidified in ROM and cannot be changed under normal circumstances
- C. Ethernet uses MAC address to identify host
- D. MAC address is a logical address that is easy to change

Answer: A,D ([LEAVE A REPLY](#))

**NEW QUESTION: 106**

The main link of the WAN of a company's MSR router is a synchronous and asynchronous serial port, which is connected to the operator's network through a V.35 cable; the router also uses an ISDN BRI interface as a backup link.

Regarding the line bandwidth, which of the following statements are correct? (multiple choice)

- A. The bandwidth of the backup line may be 128Kbps
- B. The bandwidth of the main link may be 1Mbps
- C. The bandwidth of the backup line may be 64Kbps
- D. The bandwidth of the backup line may be 144Kbps

Answer: ([SHOW ANSWER](#))

**Valid GB0-191-ENU Dumps** shared by PrepPdf.com for Helping Passing GB0-191-ENU Exam! PrepPdf.com now offer the **newest GB0-191-ENU exam dumps**, the PrepPdf.com GB0-191-ENU exam **questions have been updated** and **answers have been corrected** get the **newest** PrepPdf.com GB0-191-ENU dumps with Test Engine here:  
<https://www.preppdf.com/H3C/GB0-191-ENU-prepaway-exam-dumps.html> (434 Q&As Dumps, **40%OFF Special Discount: Exam-Tests**)

**NEW QUESTION: 107**

The basic process of Layer 2 forwarding of an Ethernet switch includes \_\_\_\_\_.

- A. If a match is found and the port corresponding to the entry belongs to the VLAN corresponding to the packet, then the packet is forwarded to that port, but if the port corresponding to the entry is the same as the port that received the Ethernet frame, the packet is discarded. frame
- B. Search the MAC address table according to the destination MAC address, if no match is found, then broadcast in the VLAN corresponding to the message;
- C. If a match is found, but the port corresponding to the entry does not belong to the VLAN corresponding to the packet, then the frame is discarded;
- D. Add or refresh MAC address table entries according to the source MAC address and VLAN ID information of the received Ethernet frame;

**Answer: A,B,C (LEAVE A REPLY)**

#### **NEW QUESTION: 108**

Divide a class C network into subnets. If all 0 and all 1 subnets are not valid subnets, then use a 26-bit mask to subnet the network. The number of effective subnets that can be divided is \_\_\_\_\_. (Please fill in Arabic numerals)

**Answer:**

2

#### **NEW QUESTION: 109**

Which of the following routing protocols only cares about the distance and direction to the destination network segment? (multiple choice)

- A. RIPv1
- B. RIPv2
- C. IGP
- D. OSPF

**Answer: A,B (LEAVE A REPLY)**

#### **NEW QUESTION: 110**

On the MSR router, the configuration file is a file saved in \_\_\_\_\_ format.

- A. database file
- B. text file
- C. Batch file
- D. executable file

**Answer: B (LEAVE A REPLY)**

#### **NEW QUESTION: 111**

A company needs to connect to the WAN to form a corporate network, and the bandwidth of the connection is required to be greater than 1Mbps. Which of the following interfaces and protocols are available?

- A. V.35 protocol interface and cable, using PPP as the link layer protocol

- B. BRI interface and cable, bundling multiple time slots, using PPP as the link layer protocol.
- C. PRI interface and cable, bundle multiple time slots, use PPP as the link layer protocol
- D. V.35 protocol interface and cable, using Frame Relay as the link layer protocol

**Answer:** ([SHOW ANSWER](#))

**NEW QUESTION: 112**

The WAN interface S0/0 of the customer's two routers MSR-1 and MSR-2 uses the PPP protocol, and the routers learn the routes from each other by configuring RIP. The following configuration is available on MSR-1: rip 1 network 0.0.0.0 import -route static # ip route-static 0.0.0.0 0.0.0.0 Serial0/0 Then the wrong explanation about this configuration is \_\_\_\_\_.

- A. Through the above configuration, MSR-1 will not dynamically advertise the default route to the peer through RIP
- B. RIP 1 in the configuration means that the configured RIP version is V1
- C. RIP imports the statically configured default route and advertises it to MSR-2
- D. By configuring MSR-1 as above, the default route can be dynamically advertised to the peer through RIP

**Answer:** A,C ([LEAVE A REPLY](#))

**NEW QUESTION: 113**

Common FTP file transfer types include \_\_\_\_\_. (Multiple choice)

- A. ASCII code type
- B. EBCDIC type
- C. Local type
- D. Binary type

**Answer:** A,D ([LEAVE A REPLY](#))

**NEW QUESTION: 114**

The correct statement about STP, RSTP and MSTP is \_\_\_\_\_. (Multiple choice)

- A. RSTP is an optimized version of the STP protocol. The delay for the port to enter the forwarding state is greatly shortened under certain conditions, which shortens the time required for the network to finally reach topological stability.
- B. MSTP is compatible with STP and RSTP.
- C. MSTP can make up for the shortcomings of STP and RSTP. It can not only converge quickly, but also enable the traffic of different VLANs to be forwarded along their respective paths, thereby providing a better load sharing mechanism for redundant links.
- D. STP cannot converge quickly. When the network topology changes, the originally blocked port will need to wait for a period of time before it becomes the forwarding state.

**Answer:** ([SHOW ANSWER](#))

**NEW QUESTION: 115**

The characteristics of MSTP are \_\_\_\_\_. (Multiple choice)

- A. None of the above statements are correct
- B. MSTP is compatible with STP and RSTP.
- C. MSTP divides a switching network into multiple domains, each of which forms multiple spanning trees, and the spanning trees are independent of each other.
- D. MSTP trims the loop network into a loop-free tree network, avoiding the proliferation and infinite loops of messages in the loop network, and at the same time, it can also provide a redundant path for data forwarding, which is implemented in the data forwarding process. Load balancing of VLAN data.

**Answer:** ([SHOW ANSWER](#))

#### **NEW QUESTION: 116**

An empty-configured MSR router is connected to the same OSPF network through multiple interfaces, and OSPF is enabled on all these interfaces. After the configuration is completed, the router has successfully learned the OSPF routes in the network.

Now run the following command on an OSPF interface of the router:

```
[MSR-GigabitEthernet0/0]ospf cost 256
```

In the case of keeping other configurations unchanged, the correct understanding of the configuration is \_\_\_\_\_.

- A. This configuration may affect the forwarding path of data packets
- B. This configuration command is invalid because the maximum value of Cost is 255
- C. The configuration command is invalid because the command was entered incorrectly
- D. This configuration will not affect the forwarding path of data packets

**Answer:** A ([LEAVE A REPLY](#))

#### **NEW QUESTION: 117**

It is found in the routing table of an MSR 30 router that the cost value of the route to the destination network segment 61.232.200.253/22 is 16, so the correct description of this route entry is \_\_\_\_\_. (Multiple choice)

- A. If the route is learned through the RIP protocol, it is possible that the network 61.232.200.253/22 is malfunctioning
- B. If the route is learned through the RIP protocol, then the route may be in a suppressed state
- C. The route can only be a dynamic route
- D. The route may be a static route

**Answer:** A,B,C ([LEAVE A REPLY](#))

#### **NEW QUESTION: 118**

Two MSR routers MSR-1 and MSR-2 are connected through the WAN and dynamically complete remote route learning through RIPv2.

After stable for 2 minutes, the RIP update message from MSR-2 is received on MSR-1, which contains the route with Cost of 14, then \_\_\_\_\_. (Multiple choice)

- A. If there is no such route in the routing table of MSR-1, then the route will be added to the routing table of MSR-1
- B. If the MSR-1 routing table originally contains the same route received from the neighbor, and its Cost is less than 14, the route will also be updated
- C. If the routing table of MSR-1 originally has the route, and its Cost is less than 14, then the routing entry on MSR-1 will not be updated
- D. If the routing table of MSR-1 originally has the route, the routing entry will only be updated when its Cost is greater than 14.

**Answer: A,B ([LEAVE A REPLY](#))**

#### **NEW QUESTION: 119**

If a port running STP in the Ethernet switch does not receive or forward data, receives and sends BPDUs, and does not perform address learning, then the port should be in the \_\_\_\_\_ state.

- A. Learning
- B. Waiting
- C. Listening
- D. Blocking
- E. Forwarding
- F. Disable

**Answer: C ([LEAVE A REPLY](#))**

#### **NEW QUESTION: 120**

The role of FTP data connection includes \_\_\_\_\_. (Multiple choice)

- A. The server sends the file to the client
- B. The client sends a file to the server
- C. The server sends alarm information to the client
- D. The server sends the file list to the client

**Answer: ([SHOW ANSWER](#))**

#### **NEW QUESTION: 121**

The hub (Hub) works in the \_\_\_\_\_ of the OSI reference model.

- A. Physical layer
- B. Data link layer
- C. Network layer
- D. Transport layer

**Answer: A ([LEAVE A REPLY](#))**

GB0-191-ENU exam **questions have been updated** and **answers have been corrected** get the **newest** PrepPdf.com GB0-191-ENU dumps with Test Engine here:

<https://www.preppdf.com/H3C/GB0-191-ENU-prepaway-exam-dumps.html> (434 Q&As Dumps,

**40%OFF Special Discount: Exam-Tests**)

#### NEW QUESTION: 122

The correct statement about the STP protocol is \_\_\_\_\_. (Multiple choice)

- A. The smaller the priority value, the lower the priority
- B. When the priority is the same, the smaller the MAC address, the higher the priority
- C. The one with the higher BridgeID value will be selected as the root bridge
- D. The default priority value of the H3C Ethernet switch is 32768
- E. The BridgeID value is a combination of the priority of the bridge and the MAC address of the bridge. The front is the priority, and the back is the MAC address.

**Answer: B,D,E (LEAVE A REPLY)**

#### NEW QUESTION: 123

The IP address of private network device A is 192.168.1.1/24, and its corresponding public network IP is 2.2.2.1;

The IP address of public network device B is 2.2.2.5. Now that device A is required to provide Telnet service to the public network, which of the following configurations can be used on the NAT device?

- A. nat server protocol telnet global 2.2.2.1 inside 192.168.1.1
- B. acl number 2000 rule 0 permit source 192.168.1.1 0.0.0.255 nat address-group 1 2.2.2.1 interface Ethernet 0/1 nat outbound 2000 address-group 1 no-pat
- C. nat server protocol tcp global 2.2.2.1 telnet inside 192.168.1.1
- D. nat server protocol tcp global 2.2.2.1 23 inside 192.168.1.1 23
- E. acl number 2000 rule 0 permit source 192.168.1.1 0.0.0.255 nat address-group 1 2.2.2.1 interface Ethernet 0/1 nat outbound 2000 address-group 1

**Answer: D (LEAVE A REPLY)**

#### NEW QUESTION: 124

On the MSR router, if you want to completely delete an obsolete file in the recycle bin, you can execute the \_\_\_\_\_ command.

- A. clear trash
- B. reset trash-bin
- C. clear all
- D. reset recycle-bin

**Answer: D (LEAVE A REPLY)**

#### NEW QUESTION: 125

The default subnet mask for class B addresses is \_\_\_\_\_.

- A. 255.255.0.0
- B. 255.0.0.0
- C. None of the above is correct
- D. 255.255.255.0

Answer: A ([LEAVE A REPLY](#))

#### NEW QUESTION: 126

To set a subnet mask so that 192.168.0.94 and 192.168.0.116 are in the same network segment, the subnet mask used may be \_\_\_\_\_.

- A. 255.255.255.248
- B. 255.255.255.240
- C. 255.255.255.224
- D. 255.255.255.192

Answer: ([SHOW ANSWER](#))

#### NEW QUESTION: 127

The WAN links of the customer's two routers MSR-1 and MSR-2 use the PPP protocol. At the same time, MSR-1 is required as the main verifier to verify MSR-2 through PAP. Then what configuration is required on MSR-2?

- A. [MSR-2-Serial0/0] ppp pap user user
- B. [MSR-2-Serial0/0] ppp pap password simple password
- C. [MSR-2] ppp pap local-user user password simple password
- D. [MSR-2-Serial0/0] ppp pap local-user user password simple password

Answer: ([SHOW ANSWER](#))

#### NEW QUESTION: 128

The following statement about the characteristics of PPP is correct. (Multiple choice)

- A. PPP is supported on synchronous and asynchronous links
- B. PPP supports authentication, including PAP authentication and CHAP authentication
- C. PPP can negotiate network addresses
- D. PPP can dynamically allocate IP addresses

Answer: ([SHOW ANSWER](#))

#### NEW QUESTION: 129

Ping is actually an application developed based on the \_\_\_\_\_ protocol.

- A. UDP
- B. TCP
- C. ICMP
- D. IP

Answer: C ([LEAVE A REPLY](#))

**NEW QUESTION: 130**

Among the STP port states listed below, which are unstable intermediate states? (multiple choice)

- A. Disabled
- B. Listening
- C. Learning
- D. Blocking
- E. Forwarding

**Answer: B,C (LEAVE A REPLY)**

**NEW QUESTION: 131**

The customer's network structure is shown in the figure.



To achieve the following requirements:

1. Host C and Host B visit each other
2. Host B and Host A cannot visit each other
3. Host A and Host C cannot visit each other

So \_\_\_\_\_. (Multiple choice)

- A. Apply advanced ACLs on the GE0/0 interfaces of the two routers to achieve this requirement
- B. Apply advanced ACL on MSR-1 interface S1/0 and GE0/0 respectively to achieve this requirement
- C. Only apply advanced ACL on MSR-1 interface GE0/0 to achieve this requirement
- D. Only applying ACL on interface GE0/0 of MSR-1 cannot meet this requirement

**Answer: A,B,C (LEAVE A REPLY)**

**NEW QUESTION: 132**

After executing the display command on the switch SWA, the switch output is as follows:

<Switch>display link-aggregation summary

Aggregation Interface Type:

BAGG - Bridge-Aggregation, RAGG - Route-Aggregation

Aggregation Mode: S - Static, D - Dynamic

Loadsharing Type: Shar - Loadsharing, NonS - Non-Loadsharing

Actor System ID: 0x8000, 000f-e267-6c6a

AGG AGG Partner ID Select Unselect Share

Interface Mode Ports Ports Type

BAGG1 S none 3 0 Shar

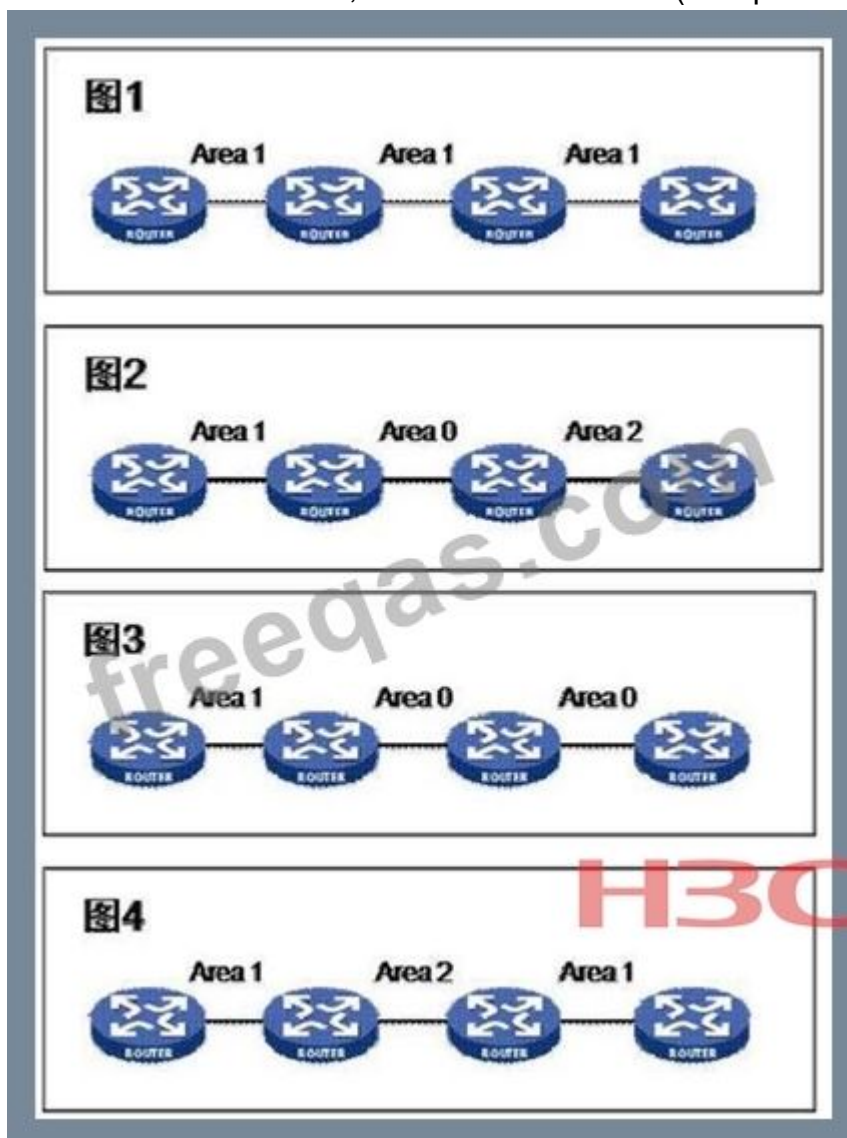
It can be judged from the above output \_\_\_\_\_. (Multiple choice)

- A. There is no active port in the aggregation group
- B. The aggregation group contains 3 active ports
- C. The type of aggregation group is static aggregation
- D. The type of aggregation group is dynamic aggregation

Answer: B,C ([LEAVE A REPLY](#))

### NEW QUESTION: 133

If you want to achieve the entire network interoperability, as shown in the figure, there are 4 ways to divide the OSPF area, which is reasonable? (multiple choice)



- A. Picture 1
- B. Picture 2
- C. Figure 4
- D. Figure 3

Answer: A,B,C,D ([LEAVE A REPLY](#))

**NEW QUESTION: 134**

Two empty-configured MSR routers are interconnected back-to-back through their respective GE0/0 interfaces, and their interconnection network segment is 192.168.1.0/30. After the IP addresses are correctly configured, the GE0/0 interfaces of the two routers can communicate with each other. Now the following OSPF configurations are added to the two routers:

```
ospf 1
area 0.0.0.1
network 192.168.1.0 0.0.0.3
```

So which of the following statements are correct?

- A.** No Router ID is configured, and a stable OSPF adjacency relationship cannot be established between the two routers
- B.** A stable OSPF adjacency relationship can be established between the two routers, but there is no OSPF route in the routing tables of RTA and RTB
- C.** Area 0 is not configured, and a stable OSPF adjacency relationship cannot be established between the two routers
- D.** An OSPF route will appear in the RTA routing table

**Answer: B** ([LEAVE A REPLY](#))

**NEW QUESTION: 135**

According to the definition of the OSI seven-layer reference model, \_\_\_\_\_ is responsible for providing flow control, checking the correctness of data transmission, and providing support for multiple upper-layer protocols. (Multiple choice)

- A.** Session layer
- B.** Data link layer
- C.** Physical layer
- D.** Transport layer
- E.** Network interface layer
- F.** Presentation layer
- G.** Network layer
- H.** Application layer

**Answer: (**[SHOW ANSWER](#)**)**

**NEW QUESTION: 136**

After executing the display command on the switch SWA, the switch output is as follows: From the above output, you can judge \_\_\_\_\_. (Multiple choice)

```
<Switch> display arp all
Type: S-Static D-Dynamic O-Openflow M-Multiport I-Invalid

IP Address      MAC Address      VLAN Interface      Aging Type
172.16.0.1      001c-233d-5695  N/A  GE0/0      17  D
172.16.1.1      0013-728e-4751  N/A  GE0/1      19  D
```

- A. The above entries are statically configured by the administrator
- B. The host with MAC address 001c-233d-5695 is connected to port GE0/1
- C. The above entries are dynamically generated by the switch
- D. The host with IP address 172.16.0.1 is connected to port GE0/0

Answer: ([SHOW ANSWER](#))

**Valid GB0-191-ENU Dumps** shared by PrepPdf.com for Helping Passing GB0-191-ENU Exam! PrepPdf.com now offer the **newest GB0-191-ENU exam dumps**, the PrepPdf.com GB0-191-ENU exam **questions have been updated** and **answers have been corrected** get the **newest** PrepPdf.com GB0-191-ENU dumps with Test Engine here:  
<https://www.preppdf.com/H3C/GB0-191-ENU-prepaway-exam-dumps.html> (434 Q&As Dumps, **40%OFF Special Discount: Exam-Tests**)

**NEW QUESTION: 137**

Use the \_\_\_\_\_ command to specify the operating system software to be used for the next startup.

- A. boot startup
- B. boot-loader
- C. startup
- D. bootfile

Answer: B ([LEAVE A REPLY](#))

**NEW QUESTION: 138**

The routing table seen on an MSR router is as follows:

```
Destination/Mask Proto Pre Cost NextHop Interface
6.6.6.0/24 Static 60 0 100.1.1.1 GE0/0
8.8.8.8/32 Direct 0 0 127.0.0.1 InLoop0
20.1.1.0/24 Static 60 0 100.1.1.1 GE0/0
30.0.0.0/8 RIP 100 1 100.1.1.1 GE0/0
```

Then the correct analysis of this routing table is \_\_\_\_\_.

- A. The next hop interface of the route whose destination network segment is 8.8.8.8/32 is InLoop0, indicating that the next hop of the route is a virtual interface similar to Null0, and the route is a black hole route
- B. The router is running RIPv1 because the mask of the destination network segment 30.0.0.0 is a natural mask
- C. The IP address of GE0/0 on the router is 100.1.1.1
- D. The routing table is not the complete routing table of the router, and the complete routing table should have at least the direct network segment route of interface GE0/0

**Answer: D ([LEAVE A REPLY](#))**

#### **NEW QUESTION: 139**

After RIP learns a route from an interface, it sets the metric of the route to infinity (16) and sends it back to the neighbor router from the original interface. This method of avoiding loops is \_\_\_\_\_.

- A. Triggered Update
- B. Poison Reverse
- C. Split Horizon
- D. Route Poisoning

**Answer: ([SHOW ANSWER](#))**

#### **NEW QUESTION: 140**

PCA and PCB are respectively connected to ports Ethernet1/0/2 and Ethernet1/0/3 of S3610 switch SWA, and the server is connected to port Ethernet1/0/1.

If you use port isolation technology to isolate the PCs from each other, but the PCs can access the server, which commands need to be configured on the switch? (multiple choice)

- A. [SWA-Ethernet1/0/3] port-isolate group 1
- B. [SWA-Ethernet1/0/1] port-isolate uplink-port
- C. [SWA] port-isolate group 1
- D. [SWA-Ethernet1/0/2] port-isolate group 1

**Answer: ([SHOW ANSWER](#))**

#### **NEW QUESTION: 141**

The two MSR routers are interconnected back-to-back through their respective Serial1/0 interfaces, and the PPP link layer protocol is encapsulated on the WAN interface. The correct statement about the PPP link in this network is \_\_\_\_\_. (Multiple choice)

- A. When the PPP link starts to be established, the LCP and NCP negotiation starts at the same time
- B. The type of network layer protocol carried on the PPP link needs to be determined in the NCP negotiation
- C. If PPP authentication is not configured on both ends, the PPP link cannot be established normally
- D. IPX protocol can be carried on this PPP link

**Answer: B,D (LEAVE A REPLY)**

**NEW QUESTION: 142**

Two empty-configured MSR routers are directly connected back-to-back through their respective WAN Serial1/0 interfaces, and their interconnection network segment is 192.0.0.0/24.

At the same time, the two routers are connected to their respective LAN segment users through their respective GigabitEthernet0/0: HostA----GE0/0--MSR-1--S1/0-----S1/0-- MSR-2--GE0/0----HostB

Configure RIPv1 on both routers. Now both routers have learned the RIP route of the opposite LAN segment.

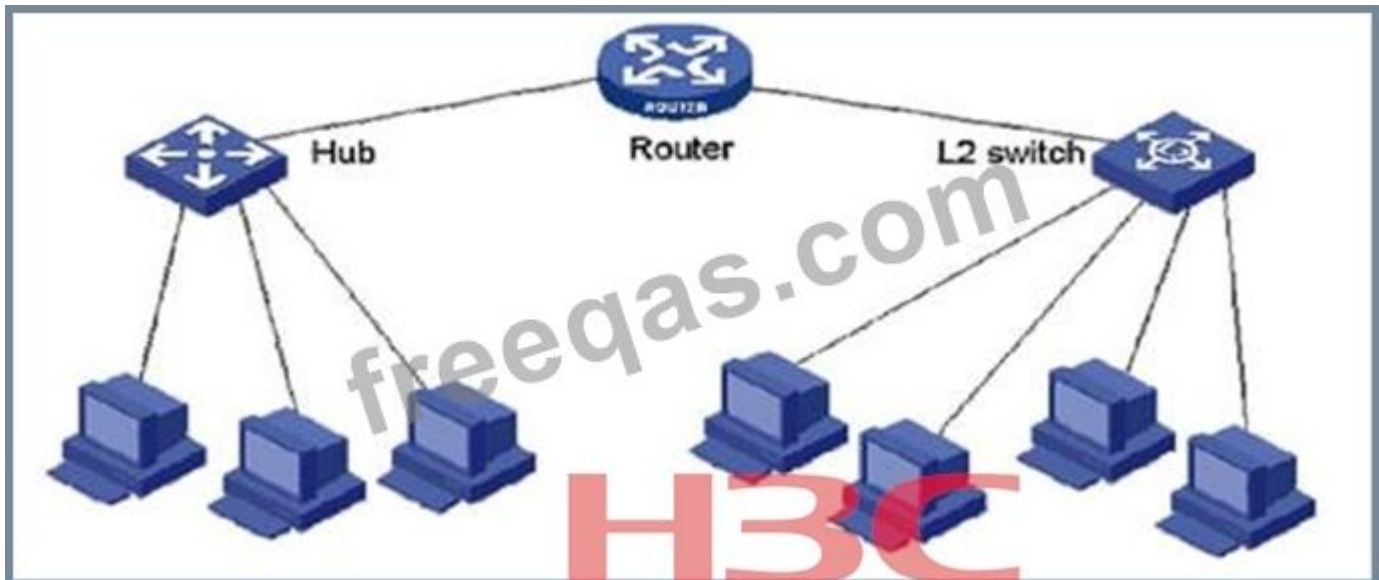
So which of the following statements are correct?

- A. If the LAN segment of one of the routers is 10.0.0.0/24, then the routing table of the other router will learn the route of 10.0.0.0/8
- B. RIP packets between the two routers are still based on UDP transmission
- C. RIP RADIUS authentication can be configured on the WAN interface of the two routers to enhance network security
- D. The way to exchange RIP packets between the two routers is broadcast

**Answer: A,B,D (LEAVE A REPLY)**

**NEW QUESTION: 143**

The XYZ company network is shown in the figure.



There is no logical interface configured on the Router; all hosts can communicate normally. Then there are \_\_\_ broadcast domains in this network. (Please fill in Arabic numerals)

**Answer:**

2

**NEW QUESTION: 144**

A network connection is as follows:

HostA----GE0/0--MSR-1--S1/0-----S1/0--MSR-2--GE0/0----HostB

The customer requires that only ICMP messages between HostA and HostB are restricted. Which of the following is feasible? (multiple choice)

- A. Configure ACL on MSR-1 to prohibit ICMP packets from source host HostA to destination host HostB, and apply this ACL in the outbound direction of S1/0 of MSR-1
- B. Configure an ACL on MSR-1 to prohibit ICMP packets from the source host HostB to the destination host HostA, and apply this ACL in the outbound direction of S1/0 of MSR-1
- C. Configure an ACL on MSR-1 to prohibit ICMP packets from the source host HostB to the destination host HostA, and apply this ACL in the outbound direction of GE0/0 of MSR-1
- D. Configure ACL on MSR-1 to prohibit ICMP packets from source host HostA to destination host HostB, and apply this ACL in the outbound direction of GE0/0 of MSR-1

**Answer: A,C ([LEAVE A REPLY](#))**

#### **NEW QUESTION: 145**

It is required to set a subnet mask to divide a class B network 172.16.0.0 into as many subnets as possible. Each subnet requires 500 hosts, so the subnet mask should be \_\_\_\_\_. (Dotted decimal format) slightly

**Answer:**

255.255.254.0

#### **NEW QUESTION: 146**

The following statement about the upgrade of H3C network equipment is correct \_\_\_\_\_. (Multiple choice)

- A. Use Xmodem to upgrade to the same speed as FTP
- B. When using FTP to upgrade, the device can only be used as an FTP client
- C. When the device cannot boot to the command line mode and needs to upgrade the operating system software, only the Xmodem method can be used
- D. In an environment where the complex interaction between the client and the server is not convenient, you can use TFTP to upgrade

**Answer: D ([LEAVE A REPLY](#))**

#### **NEW QUESTION: 147**

Normally, the router will fragment packets whose length is greater than the interface MTU. In order to detect the line MTU, you can ping the destination address with the \_\_\_\_\_ parameter.

- A. -d
- B. -f
- C. -c
- D. -a

**Answer: ([SHOW ANSWER](#))**

#### **NEW QUESTION: 148**

The correct configuration command to enable DHCP service on the router is \_\_\_\_\_.

- A. [Router-dhcp-pool-0] dhcp
- B. [Router] dhcp
- C. [Router] dhcp enable
- D. [Router-dhcp-pool-0] dhcp enable

Answer: C ([LEAVE A REPLY](#))

**NEW QUESTION: 149**

On the MSR router, by default, the configuration file is suffixed with \_\_\_\_\_.

- A. .sys
- B. .bin
- C. .cfg
- D. .txt

Answer: C ([LEAVE A REPLY](#))

**Valid GB0-191-ENU Dumps** shared by PrepPdf.com for Helping Passing GB0-191-ENU Exam! PrepPdf.com now offer the **newest GB0-191-ENU exam dumps**, the PrepPdf.com GB0-191-ENU exam **questions have been updated** and **answers have been corrected** get the **newest** PrepPdf.com GB0-191-ENU dumps with Test Engine here:  
<https://www.preppdf.com/H3C/GB0-191-ENU-prepaway-exam-dumps.html> (434 Q&As Dumps, **40%OFF Special Discount: Exam-Tests**)