

## Huawei.H12-261\_V3.0-ENU.v2022-09-25.q124

<b>Exam Code:</b>	H12-261_V3.0-ENU
<b>Exam Name:</b>	HCIE-Routing & Switching (Written) V3.0
<b>Certification Provider:</b>	Huawei
<b>Free Question Number:</b>	124
<b>Version:</b>	v2022-09-25
<b># of views:</b>	2147
<b># of Questions views:</b>	1240
<a href="https://www.freeqas.com/qa/Huawei/H12-261_V3.0-ENU/Huawei.H12-261_V3.0-ENU.v2022-09-25.q124.html">https://www.freeqas.com/qa/Huawei/H12-261_V3.0-ENU/Huawei.H12-261_V3.0-ENU.v2022-09-25.q124.html</a>	

### NEW QUESTION: 1

Hop Limit field in the IPv6 basic header is similar to which field in the IPv4 header?

- A. Time to Live
- B. identification
- C. Protocol
- D. Flags

**Answer: A** ([LEAVE A REPLY](#))

### NEW QUESTION: 2

What is the relationship between CIR, BC and TC?

- A.  $TC=CIR/BC$
- B.  $TC=BC/CIR$
- C.  $CIR=TC/BC$
- D.  $CIR=BE/TC$

**Answer: B** ([LEAVE A REPLY](#))

### NEW QUESTION: 3

QinQ technology is a technology that expands the VLAN space. It achieves the function of expanding the VLAV space by adding a layer of 802.10 Tag on the basis of the 802.1Q tag message.

Which of the following statements about QINQ is wrong?

- A. Flexible QinQ can add different outer tags according to different inner tags, which makes the division of user VLANs more detailed
- B. QinQ increases the number of VLANs to  $4095*4095$
- C. QinQ technology can make the private network VLA transparently transmitted on the public network

D. Basic QinQ is implemented based on the interface method

**Answer: B (LEAVE A REPLY)**

**NEW QUESTION: 4**

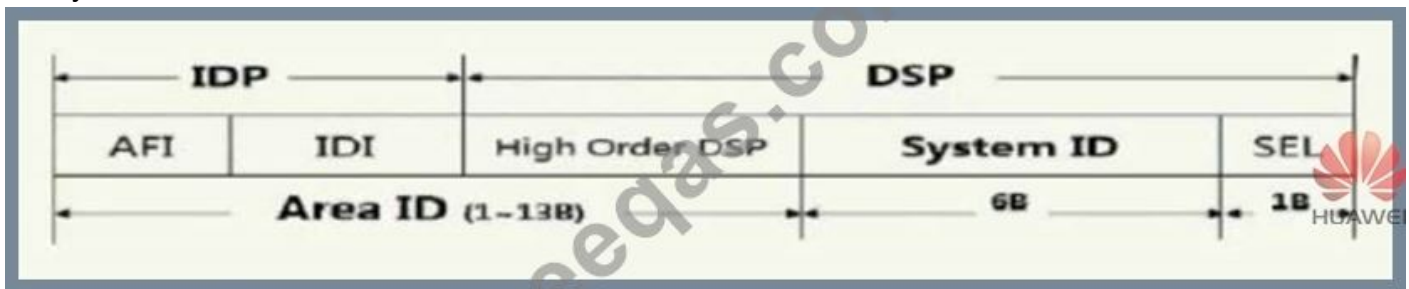
A bookstore provides a wired network for customers to learn online. However, some users are found unable to access the network one day. After checking, the IP resource of the DHCP address pool has been exhausted. Which of the following is the best way to solve the current problem?

- A. Configure DAI
- B. Configure a static ARP binding table.
- C. Configure IPSPG
- D. Limit the maximum number of DHCP snooping binding entries that an interface can learn.

**Answer: D (LEAVE A REPLY)**

**NEW QUESTION: 5**

As shown in the figure, in the IPv4 and IPv6 environment, the SEL field in the ISIS NET address always takes the value 00.



- A. True
- B. False

**Answer: A (LEAVE A REPLY)**

**NEW QUESTION: 6**

Which of the following description is wrong about sham link?

- A. Sham link can be configured in any area and needs to be configured manually, and there must be a route to the sham link destination address (the sham link endpoint address of the peer PE) in the local VPN instance
- B. In order to forward VPN traffic through the MPLS backbone network, the route cost of the sham link should be less than the OSPF route cost of the backdoor link
- C. Sham link is regarded as a link between two VPN instances. Each VPN instance must have an endpoint address of the sham link, which must be a Loopback with a 32bit mask in the VPN address space on the PE router. interface address
- D. The endpoint address of the Sham link is advertised by BGP as the VPNv4 address. Routes that have passed through the sham link can also be imported into BGP in the form of VPNv4 routes

**Answer: D (LEAVE A REPLY)**

### NEW QUESTION: 7

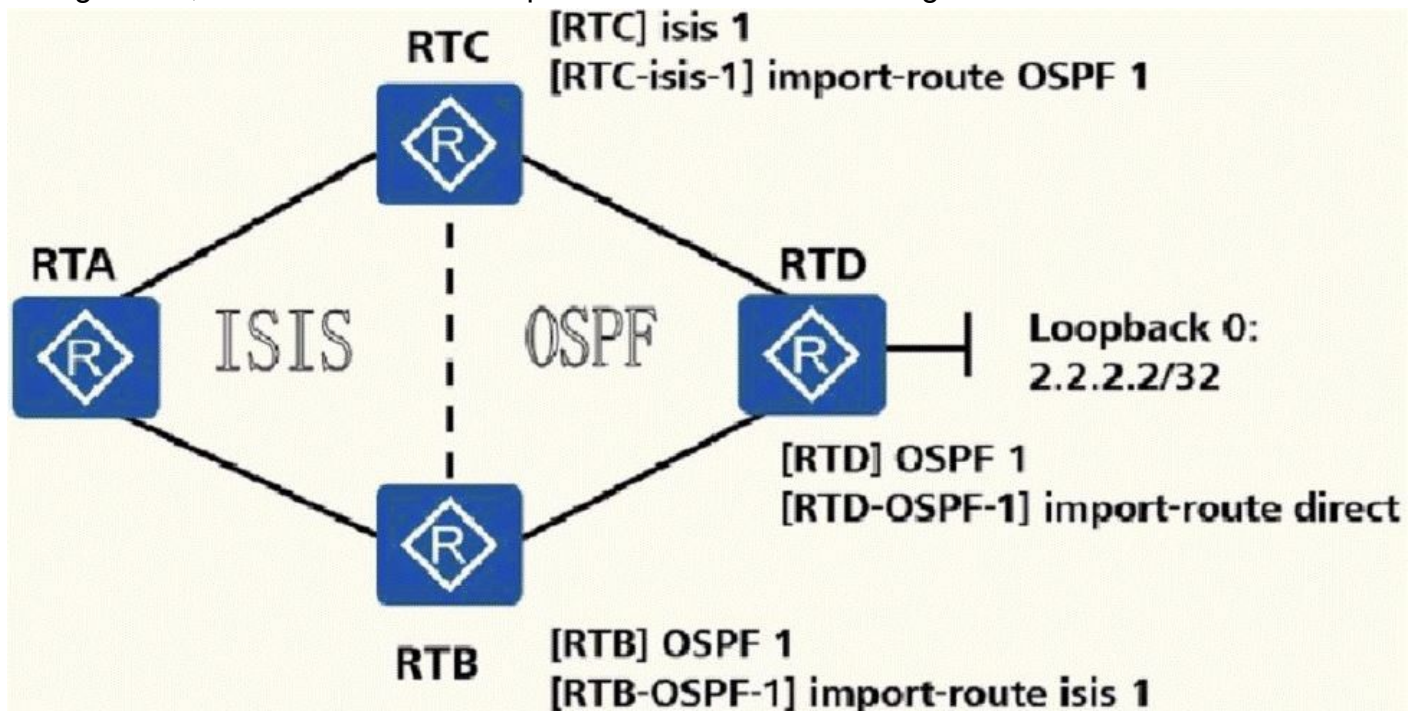
What improvements have been made to the IGMPv2 protocol compared to IGMPv1? (Multiple Choice)

- A. Added specific source group query messages
- B. Added maximum response time field
- C. Added off-group messages
- D. Added specific group query message

Answer: ([SHOW ANSWER](#))

### NEW QUESTION: 8

ISIS and OSPF are running on a network at the same time. The topology is shown in the figure. The two border routers: RTB and RTC, are respectively configured to import routes, and the devices are connected by one gigabit port, 2.2.2.2/32 network segment is imported into OSPF by import-route-direct on RTD. Assuming that all other configurations are dead and the default configuration, which about the description of this network is wrong?



- A. The following configuration can filter out the routes from the 2.2.2.2/32 network segment of RTD when RTC imports OSPF routes. [RTC-acl-basic-2001]rule 5 deny source 2.0.0.0 0.255.255.255 [RTC-ac1-basic-2001]rule 10 permit RTC-isis-1]filter-policy 2001 import
- B. Adjusting the ISIS priority on RTB to 160 can avoid suboptimal routing problems in the network.
- C. RTB learns the route next hop for the 2.2.2.2/32 network segment is RTA.
- D. Use the following configuration on RTC to filter out only the routes in the 2.2.2.2/32 network segment when importing routes, [RTC]ip ip-prefix 10 index 1 deny 2.0.0.0 8 less-equal 32 [RTC-isis -1]filter-policy ip-prefix 10 import

Answer: D ([LEAVE A REPLY](#))

**NEW QUESTION: 9**

A newly deployed HW router is configured for Weighted Random Early Discard (WRED) on the HW network.

WRED has which of the following characteristics? (Multiple Choice)

- A. Global Synchronization is avoided by selectively dropping packets from multiple TCP flows.
- B. Low bandwidth flows are experiencing packet drop at a higher rate than higher bandwidth flows.
- C. For packets of different priorities, WRED can set different packet drop thresholds and packet loss ratios.
- D. When the minimum threshold is crossed, WRED begins dropping all incoming packets (tail-drop).

**Answer: A,C ([LEAVE A REPLY](#))**

**NEW QUESTION: 10**

Which of the following description about OSPFV3 protocol authentication is wrong?

- A. Huawei router OSPFv3 IPsec certification can not only support transmission mode, but also support tunnel mode
- B. OSPFV3 can only use manual mode to establish SA
- C. OSPFV3 authentication relies on the authentication header and encapsulation security payload header of IPv6 packets
- D. An OSPFv3 protocol header is removed Autype and Authentication field

**Answer: ([SHOW ANSWER](#))**

**NEW QUESTION: 11**

A number of transition techniques have emerged in the process of replacing a P4 address used in a network with a Pv6 address. These technologies are divided into two categories, one is PV4/IPv6 coexistence technology and the other is v4/P6 interworking technology. Which of the following options belong to Pv4/IP6 coexistence technology? (Multiple Choice)

- A. NAT64
- B. IPv6 over IPv4
- C. ISATAP
- D. Dual-Stack

**Answer: B,C,D ([LEAVE A REPLY](#))**

**NEW QUESTION: 12**

Router-LSA of OSPFv3 is generated by each router. It describes the interface address and cost of each link of the router, and also contains the router ID of the neighboring router.

- A. False
- B. True

**Answer: A ([LEAVE A REPLY](#))**

**NEW QUESTION: 13**

IS-IS supports the process and calculation of IPv6 routes by adding new TLV carrying IPv6 addresses and reachability information.

- A. TRUE
- B. FALSE

Answer: ([SHOW ANSWER](#))

**NEW QUESTION: 14**

What are the benefits of OSPF area division? (Multiple choice)

- A. A large number of LSA flooding is restricted to a single area
- B. It can reduce the size of LSDB and thus reduce the consumption of router memory
- C. Routers in an area can understand the topology details outside their area
- D. LSA can also be reduced with the division of areas, reducing the consumption of router CPU

Answer: A,B,D ([LEAVE A REPLY](#))

**NEW QUESTION: 15**

What is the Router-ID of OSPFv3?

- A. 32-bit value
- B. 128-bit value
- C. 100-bit value
- D. 64-bit value

Answer: A ([LEAVE A REPLY](#))

**NEW QUESTION: 16**

Regarding the basic forwarding process of MPLS, which of the following statement is wrong?

- A. By default, the Egress node that supports PHP has a label value of 3 assigned to the penultimate hop node.
- B. When the IP packet enters the MPLS domain, check whether the Tunnel ID value corresponding to the destination IP address is 0x0. If the Tunnel ID value is 0x0, then enter the MPLS forwarding process.
- C. The transmitting node device will replace the existing label on the top of the stack (the outermost label) with the label allocated by the next hop device.
- D. When an IP packet enters the MPLS domain, the MPLS border device inserts a new label between the packet's Layer 2 header and the IP header.

Answer: ([SHOW ANSWER](#))

PrepPdf.com H12-261\_V3.0-ENU exam **questions have been updated** and **answers have been corrected** get the **newest** PrepPdf.com H12-261\_V3.0-ENU dumps with Test Engine here: [https://www.preppdf.com/Huawei/H12-261\\_V3.0-ENU-prepaway-exam-dumps.html](https://www.preppdf.com/Huawei/H12-261_V3.0-ENU-prepaway-exam-dumps.html) (485 Q&As Dumps, **40%OFF Special Discount: Exam-Tests**)

#### **NEW QUESTION: 17**

Which of the following parameters are modified, and then the IS-IS neighbor relationship needs to be re-established? (Multiple choice)

- A. Modify the IH transmission interval of the IS-IS interface
- B. Modify the cost value of the IS-IS interface
- C. Modify the IP address of the IS-IS interface
- D. Modify the level of the IS-IS interface

**Answer:** ([SHOW ANSWER](#))

#### **NEW QUESTION: 18**

To achieve the traffic filtering function, you can use traffic-filter or MQC. Compared with traffic-filter, MQC can be called in more views.

- A. TURE
- B. FALSE

**Answer:** ([SHOW ANSWER](#))

#### **NEW QUESTION: 19**

Which scenario can use AS-path -filter?

- A. If-match clause in Route-policy
- B. apply clause in Route-policy
- C. Filter the route sent to the BGP neighbor according to the AS\_PATH attribute carried in the route. For example, the command peer x.x.x.x as-path-filter export
- D. Filter the route received to the BGP neighbor according to the AS\_PATH attribute carried in the route. For example, the command peer x.x.x.x as-path-filter import

**Answer:** A,C,D ([LEAVE A REPLY](#))

#### **NEW QUESTION: 20**

Which descriptions are correct about the BGP reflector? (Multiple Choice)

- A. The route reflector can advertise other clients and non-clients from the routes learned from one client.
- B. IBGP neighbor relationships need to be fully interconnected without a route reflector. The introduction of route reflectors can reduce the requirements for full interconnection
- C. The route reflector can advertise the routes learned from the non-client to all clients.
- D. The route reflector can advertise all clients and non-clients from routes learned from IBGP neighbors.

**Answer:** A,B,C ([LEAVE A REPLY](#))

### NEW QUESTION: 21

A certain park deployed both IPv4 and IPv6 networks for business testing, and IS-IS was run to achieve network interconnection. IS-IS routing protocol has good scalability and is widely used in existing networks.

Regarding IS-IS scalability, which of the following statements are correct? (Multiple questions)

- A. IS-IS uses TLV structure to construct messages, which makes IS-IS more flexible and expandable
- B. In order for IS-IS to support IPv6, a new TLV needs to be added to carry IPv6 address information
- C. NLPID is a new TLV of IS-IS to support IPv6
- D. For IS-IS, adding new features only needs to add a new TLV

**Answer: A,B,D ([LEAVE A REPLY](#))**

### NEW QUESTION: 22

Which of the following description about the related information of BGP4+ is correct? (Multiple choice)

- A. Modifying the Router ID of the BCP will cause the BGP connection between the routers to be re-established.
- B. The Next Hop attribute in BCP4+ is represented by the Pv6 address, which can be the link-local address of the next hop.
- C. BGP4+ does not support automatic route aggregation.
- D. Bgp4+ can use the dampening command to suppress IBGP routes.

**Answer: ([SHOW ANSWER](#))**

### NEW QUESTION: 23

Regarding the characteristics of CE dual-homing, which of the following statement is incorrect?

- A. The VRFs of two PEs connected to the same CE can belong to different VPNs.
- B. CE accesses the backbone network through two links. These two links can be used for load sharing or as active and standby links.
- C. In CE dual-homing networking, loops may occur, and route-tags can be used to solve loop problems.
- D. CE and PE form a CE dual-homing network, which can ensure high network availability.

**Answer: ([SHOW ANSWER](#))**

### NEW QUESTION: 24

Which of the following role of Link-LSA in OSPFv3 not include?

- A. Notify the router's per-port ID to other routers on the link
- B. Notify other routers on the link of the options set in the Network LSA originating from this link
- C. Advertise the link-local address of this interface to other routers on the link
- D. Advertise the IPv6 prefix list of this port to other routers on the link

**Answer: A ([LEAVE A REPLY](#))**

**NEW QUESTION: 25**

Which of the following are used in Ethernet networks? (Multiple Choice)

- A. 802.5 encapsulated frames.
- B. 802.3 encapsulated frames
- C. Non-Canonical format MAC addresses.
- D. CSMA/CD for media access.
- E. Canonical format MAC addresses.

**Answer: ([SHOW ANSWER](#))**

**NEW QUESTION: 26**

Which of the following statements about 802.1x authentication, RADIUS, and HWTACACS authentication is correct? (Multiple Choice)

- A. RADIUS authentication and 802.1x authentication are mutually exclusive.
- B. Users can access the network using 802.1x authentication and complete identity authentication through Radius.
- C. RADIUS authentication and HWTACACS authentication are mutually exclusive. You cannot perform dual authentication for the same user at the same time.
- D. RADIUS authentication and HWTACACS authentication can perform dual authentication for the same user at the same time, which is more secure.

**Answer: B,C ([LEAVE A REPLY](#))**

**NEW QUESTION: 27**

Which of the following statements about the VXLAN gateway are wrong?

- A. The second layer gateway of VXLAN allows tenant access VXLAN VLAN and used to communicate between the subnets in the same VLAN.
- B. Layer 2 gateway is bound to the VPN instance.
- C. The third layer gateway of VXLAN can be divided into centralized gateway and distributed gateway.
- D. The third layer gateway of VXLAN allows inter-subnet VXLAN communications and external network access.

**Answer: ([SHOW ANSWER](#))**

**NEW QUESTION: 28**

After reset isis all is executed, the IS-IS protocol process needs to be restarted and neighbors need to be re-established, but various IS-IS statistics will not be cleared.

- A. TRUE
- B. FALSE

**Answer: ([SHOW ANSWER](#))**

**NEW QUESTION: 29**

The filter policy 2000 export is configured in the IS-IS process. Which of the following is wrong about the function of this command?

- A. If this command is not configured, the device will advertise all the routes imported by external routing protocols into IS-IS by default.
- B. This command will filter the link state information released to the outside world
- C. The routing entries generated by the device itself will be restricted from being released to the outside world
- D. It needs to be used in conjunction with route import, which is used to advertise only part of the imported external routes to neighbors.

**Answer: C** ([LEAVE A REPLY](#))

**NEW QUESTION: 30**

Configure queue-based traffic shaping. If the queue length exceeds the cache size, the tail is discarded by default.

- A. True
- B. False

**Answer: B** ([LEAVE A REPLY](#))

**NEW QUESTION: 31**

You want to set the DSCP value of VoIP traffic in HW network equipment to EF. According to the differentiated services model RFC, the flow mark EF should be set as \_\_\_\_\_.

- A. Bitstream 101110
- B. DSCP is set to decimal 36
- C. IP Experimental ECN
- D. IPTos is set to 0xEF
- E. DSCP is set to decimal 5

**Answer: (**[SHOW ANSWER](#)**)**

**Valid H12-261\_V3.0-ENU Dumps** shared by PrepPdf.com for Helping Passing H12-261\_V3.0-ENU Exam! PrepPdf.com now offer the **newest H12-261\_V3.0-ENU exam dumps**, the PrepPdf.com H12-261\_V3.0-ENU exam **questions have been updated** and **answers have been corrected** get the **newest** PrepPdf.com H12-261\_V3.0-ENU dumps with Test Engine here: [https://www.preppdf.com/Huawei/H12-261\\_V3.0-ENU-prepaway-exam-dumps.html](https://www.preppdf.com/Huawei/H12-261_V3.0-ENU-prepaway-exam-dumps.html) (485 Q&As Dumps, **40%OFF Special Discount: Exam-Tests**)

**NEW QUESTION: 32**

Which of the following statements about VXLAN is wrong?

- A.** VXLAN packets are forwarded by routing in the Underlay network, and the Underlay does not pay attention to the terminal MAC address of the inner data frame when forwarding
- B.** Introducing VXLAN technology into the campus network can realize Layer 2 and Layer 3 communication
- C.** VXLAN uses MAC in UDP encapsulation to extend the Layer 2 network, encapsulating Ethernet packets on top of IP packets
- D.** When deploying VXLAN, in addition to the devices at both ends of the VXLAN tunnel that need to support VXLAN, the forwarding device in the middle must also support it, otherwise VXLAN packets cannot be forwarded normally

**Answer: D** ([LEAVE A REPLY](#))

### **NEW QUESTION: 33**

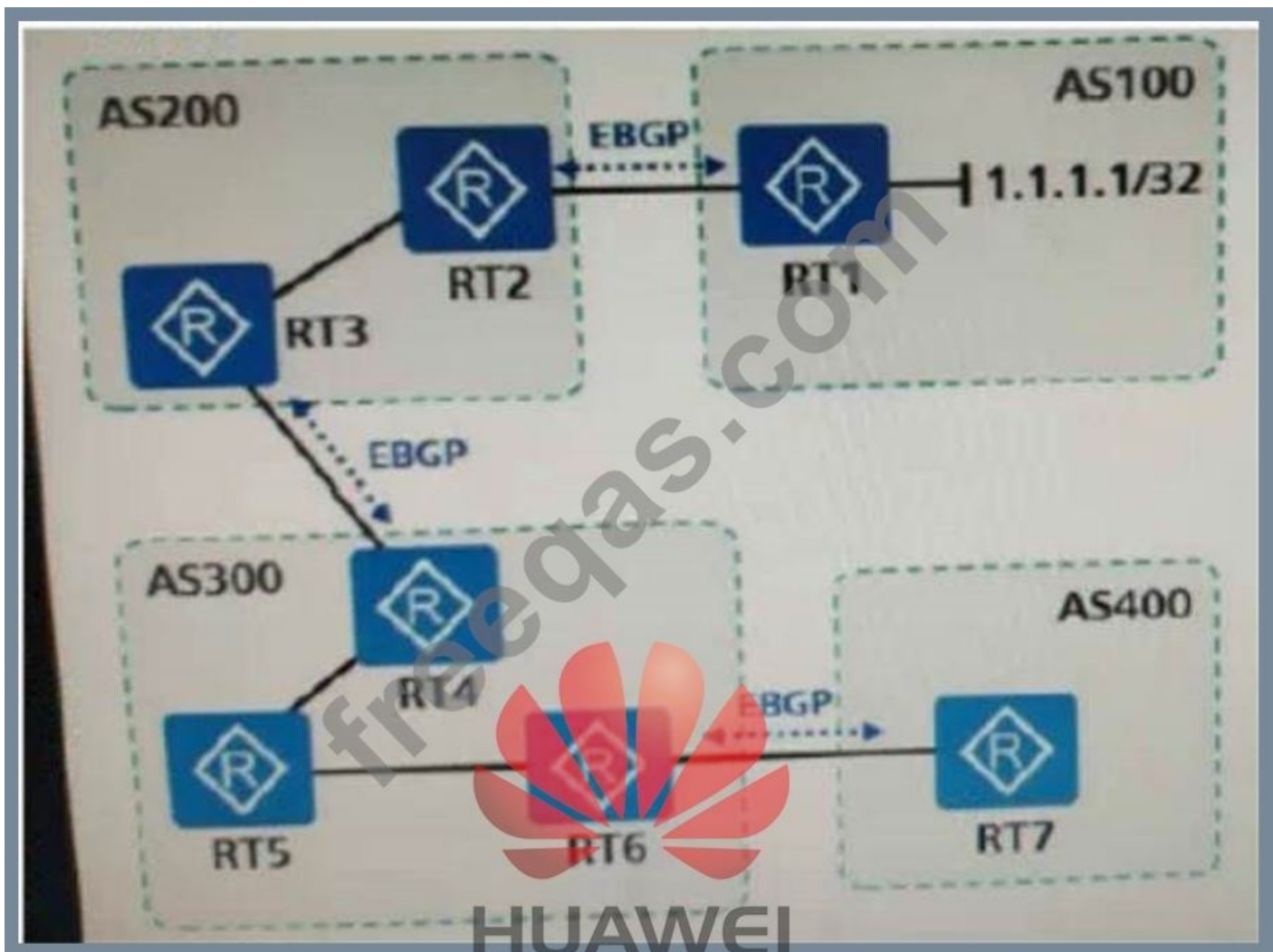
Regarding the processing mode of MPLS for TTL, which description is correct?

- A.** Uniform simulation, when the IP packet passes through the MPLS network, the IP TTL of the ingress node is decremented by 1, and the MPLS TTL field is a fixed value.
- B.** In MPLS VPN, if you want to hide the structure of the MPLS backbone network, you can use the uniform mode for Ingress packets for private network packets.
- C.** The TTL of the MPLS label has the same meaning as the TTL in the IP header, which can prevent the MPLS network from generating a routing loop
- D.** In Pipe mode, when an IP packet passes through the MPLS network, the IP TTL is decremented by 1 to the MPLS TTL field on the ingress node.

**Answer: C** ([LEAVE A REPLY](#))

### **NEW QUESTION: 34**

As shown in the following figure, the corresponding peer relationship is established. The AS400 receives the 1.1.1.1/32 network route from the AS100. What is the AS-Path attribute?



- A. 100, 200, 300, 400
- B. 300, 200, 100
- C. 100, 200, 300
- D. 400, 300, 200, 100

Answer: B ([LEAVE A REPLY](#))

#### NEW QUESTION: 35

The second-layer network architecture of a company is as shown in the figure. After the engineer is configured, the services between the departments cannot be communicated. Check the status of the device as follows. Which is the possible reason? (No figure is shown, the MSTP three elements are different, causing the entry to appear on the master port.) (Multiple Choice)

- A. Instance VLAN mapping configuration between the switches is inconsistent
- B. The Region Name configuration between the switches is inconsistent
- C. The BPDU interval configuration between switches is inconsistent.
- D. The Revision Level configuration between switches is inconsistent

Answer: A,B,D ([LEAVE A REPLY](#))

#### NEW QUESTION: 36

In which of the following scenarios will send free ARP packets? (Multiple Choice)

- A. After the VRRP protocol master and backup role election is completed.
- B. When a host connected to the switch sends a Ping packets.
- C. When a new host configured with an IP address is connected to the network
- D. After the DHCP client receives the confirmation message sent by the server

Answer: ([SHOW ANSWER](#))

#### NEW QUESTION: 37

View LSP on a router, see the following results:

Which of the following statement is correct?

- A. When sending a data packet with a destination address of 2.2.2.2, send it directly without labeling.
- B. When sending a data packet with a destination address of 3.3.3.3, tag 1026 and send it.
- C. When the router receives a data packet with a label of 1024, it will change the label to 1027 and then send it.
- D. When sending a data packet with a destination address of 4.4.4.4, the packet is sent directly untagged.

Answer: A ([LEAVE A REPLY](#))

#### NEW QUESTION: 38

In a basic network layer data packet, which of the following information can be included? (Multiple choice)

- A. Network layer tail
- B. Upper-level data
- C. Data link layer header
- D. Network layer header

Answer: ([SHOW ANSWER](#))

#### NEW QUESTION: 39

Regarding routing control, which of the following description is correct? (Multiple choice)

- A. In node 10, the relationship between if-match community-fiter1 and if-match as-pah-fiter1 are "and"
- B. Use the impot-route BGP command to import IBGP routes
- C. OSPF, ISIS, and BGP can all issue default routes.
- D. AS-path-fiter is for AS-path, which affects the routing of routing.

Answer: A,C,D ([LEAVE A REPLY](#))

#### NEW QUESTION: 40

Which of the following expressions can only match BGP routing entries that pass through AS200 and then AS300?

- A. \_(200 300)\_
- B. ^200 | ^300

C. 200\$ | 300\$

D. \_[200 300]\_

**Answer:** ([SHOW ANSWER](#))

**NEW QUESTION: 41**

What is the value of OSPF and BFD linkage?

**A.** The hello sending interval of OSPF is at the second level, which is faster than the BFD sensing link state

**B.** Any change in the BFD status will not affect the OSPF neighbor status

**C.** Through the BFD detected at the millisecond level, the OSPF status is associated to achieve the purpose of OSPF quickly sensing the link status

**D.** The sending interval of BFD packets can reach the millisecond level, which is slower than the OSPF sensing link state

**Answer:** **C** ([LEAVE A REPLY](#))

**NEW QUESTION: 42**

Which of the following descriptions are wrong about BGP load sharing? (Multiple Choice)

**A.** The destination network segment is the same, and BGP routes with different sources can form load sharing.

**B.** If BGP load balancing is implemented, the local device needs to be configured with the peer next-hop-local command to change the next hop address to its own address when advertise router to the IBGP peer group.

**C.** The AS\_Path attribute of the equal-cost route that forms load sharing must be different.

**D.** IBGP routes and EBGP routes arriving at the same destination on the public network can form load balancing.

**Answer:** ([SHOW ANSWER](#))

**NEW QUESTION: 43**

Regarding the multicast ASM model and the SSM model, which of the following statements are correct? (Multiple choice)

**A.** In the ASM model, the receiver cannot know the location of the multicast source in advance

**B.** SSM and ASM use the same multicast address range

**C.** In the SSM model, the receiver already knows the specific location of the multicast source in advance through other means

**D.** SSM directly establishes a multicast forwarding tree between the recipient and the multicast source

**Answer:** **A,C,D** ([LEAVE A REPLY](#))

**NEW QUESTION: 44**

Huawei S series switches, If you need to specify a member switch as the stack master switch, you can power on this first switch 20 and then to the other members of the power switch.

- A. True
- B. False

Answer: A ([LEAVE A REPLY](#))

**NEW QUESTION: 45**

Which of the following statements about RADIUS is correct?

- A. RADIUS authentication and Portal authentication cannot be used together. Because Portal authentication is usually used, the Portal server can be used to authenticate users.
- B. MAC authentication does not require a username and password, so you cannot use RADIUS to authenticate a user.
- C. RADIUS protocol authentication, authorization, and audit separation.
- D. RADIUS supports both wired and wireless access methods.

Answer: ([SHOW ANSWER](#))

**NEW QUESTION: 46**

The following topological diagrams are available, which of the following statements are correct? (Multiple Choice)



- A. There is no route with the destination network segment 10.0.2.2/32 on R1
- B. There is a route with the destination network segment 10.0.3.3/32 on R1
- C. There is no route with the destination network segment 10.0.3.3/32 on R1
- D. There is a route with the destination network segment 10.0.2.2/32 on R1

Answer: C,D ([LEAVE A REPLY](#))

Valid H12-261\_V3.0-ENU Dumps shared by PrepPdf.com for Helping Passing H12-261\_V3.0-ENU Exam! PrepPdf.com now offer the newest H12-261\_V3.0-ENU exam dumps, the

PrepPdf.com H12-261\_V3.0-ENU exam **questions have been updated** and **answers have been corrected** get the **newest** PrepPdf.com H12-261\_V3.0-ENU dumps with Test Engine here: [https://www.preppdf.com/Huawei/H12-261\\_V3.0-ENU-prepaway-exam-dumps.html](https://www.preppdf.com/Huawei/H12-261_V3.0-ENU-prepaway-exam-dumps.html) (485 Q&As Dumps, **40%OFF Special Discount: Exam-Tests**)

**NEW QUESTION: 47**

If there is a Huawei switch running the STP protocol, and now the G0/0/17 interface and G0/0/18 interface of the switch are connected by a cable, which of the following descriptions about this scenario is correct?

- A. The G0/0/18 interface will continue to change back and forth between the listening state and the learning state
- B. Both the G0/0/17 interface and G0/0/18 interface will enter the Forwarding state
- C. Both the G0/0/17 interface and G0/0/18 interface will enter the Discarding state
- D. The G0/0/17 interface will enter the Blocking state
- E. The G0/0/18 interface will enter the Discard ing state

**Answer: E** ([LEAVE A REPLY](#))

**NEW QUESTION: 48**

When an administrator wants to manage some routes on the router during operation and maintenance, which of the following tools can mark these routes so that the administrator can configure the policy? (Multiple Choice)

- A. Use Tag value to mark routes on the router.
- B. If the BGP protocol is running, use the community attribute to mark the route.
- C. Use ACLs to mark routes on the router.
- D. Use ip-prefix to mark routes on the router.

**Answer: (SHOW ANSWER)**

**NEW QUESTION: 49**

BGP 4+ runs between the two routers. The neighbor relationship is normal. However, the BGP routing table of the local router does not have neighbor's routing entry. What is the possible reason? (Multiple Choice)

- A. Active-route-advertise configured on the peer
- B. The routing entries of the peer BGP routing table are non-optimal.
- C. Peer ignore configured on the peer
- D. The next hop address of the BGP routing entry is unreachable.

**Answer: A,B,D** ([LEAVE A REPLY](#))

**NEW QUESTION: 50**

Which of the following statements are correct about PPPoE data frames? (Multiple Choice)

- A. When PPPoE is used to transfer session data, Code must be set to 0x0.
- B. After the PPPoE session is established, all Ethernet packets are unicast.

C. The Session\_ID segment of the ppp session must be the value specified in the Discovery phase and cannot be changed.

D. The fixed value of the Ethernet Type field is Ox8863.

**Answer: A,B,C ([LEAVE A REPLY](#))**

#### **NEW QUESTION: 51**

Regarding the description of IGMP Snooping, which is correct? (Multiple Choice)

A. IGMP Snooping builds a MAC multicast address table by monitoring IGMP messages sent by the host

B. IGMP Snooping does not consume the CPU of the switch

C. IGMP Snooping runs at the link layer and is a multicast restriction mechanism on the Layer 2 Ethernet switch, which is used to manage and control multicast groups

D. IGMP Snooping solves the problem of multicast packets broadcast at Layer 3

**Answer: ([SHOW ANSWER](#))**

#### **NEW QUESTION: 52**

Regarding the configuration of the security level of the firewall security zone, which of the following statement is wrong?

A. The newly created security zone, the system defaults its security level to 1

B. Once the security level is set, it is not allowed to change

C. The security level can only be set for the custom security zone

D. In the same system, two security zones are not allowed to configure the same security level

**Answer: ([SHOW ANSWER](#))**

#### **NEW QUESTION: 53**

In route-policy, what are the BGP attributes that can be used in the apply clause? (Multiple Choice)

A. Tag

B. Local-Preference

C. AS-Path

D. MED

**Answer: B,C,D ([LEAVE A REPLY](#))**

#### **NEW QUESTION: 54**

Which of the following is the correct description of the process of registering the source DR with the RP in the PIM-SM?

A. The registration message encapsulates the multicast service data.

B. The registration message is used to construct an RPT tree between the source DR and the RP.

C. The registration message is a multicast message.

D. The RP sends a registration stop message as soon as it receives the registration message.

**Answer:** ([SHOW ANSWER](#))

**NEW QUESTION: 55**

If the OSPF protocol is running on the network, configure the non-backbone area in the OSPF area as the LSA with the ls-id of 0.0.0.0 in the Totally Stub Totally Stub area. Which LSA does the LSA belong to?

- A. LSA5
- B. LSA1
- C. LSA2
- D. LSA3

**Answer:** D ([LEAVE A REPLY](#))

**NEW QUESTION: 56**

Because BGP is the EGP routing protocol, BGP routing policies can only be deployed between EBGP neighbors, and routing policies deployed between IBGP neighbors are invalid.

- A. TRUE
- B. FALSE

**Answer:** ([SHOW ANSWER](#))

**NEW QUESTION: 57**

Which of the following description about OSPFv3 message is correct? (Multiple choice)

- A. The Option field of Hello messages and DD messages is extended to 24 bits
- B. The LSR message contains the complete LSA header information for requesting to update the LSA
- C. LSACK message contains LSA header information to confirm receipt of LsU messages
- D. The Hello message must contain the interface ID of the sending interface

**Answer:** ([SHOW ANSWER](#))

**NEW QUESTION: 58**

In the case of not dividing the area, which of the following description is true about the link state routing protocol? (Multiple Choice)

- A. The router will send all the wrong path status information sent by one neighbor to all other neighbors to ensure the synchronization of the database.
- B. Each router learns the route directly from the routing update and adds it to the routing table.
- C. Routers in the entire flooding domain have the same wrong path state database
- D. Each router establishes a topological structure of the entire flood domain
- E. Routers in the flooding domain may repeatedly receive the same link state information.

**Answer:** C,D,E ([LEAVE A REPLY](#))

**NEW QUESTION: 59**

Traditional BGP-4 can only manage IPv4 unicast routing information. In order to provide support for multiple network layer protocols, MP-BGP extends BGP-4. Among them, MP-BGP's support for IPv6 unicast networks is called BGP4+, and BGP4+ carries routing next-hop address information through the NextHop attribute.

- A. TRUE
- B. FALSE

**Answer: B (LEAVE A REPLY)**

**NEW QUESTION: 60**

In the implementation of VXLAN, what is the mapping relationship between VNI and BD?

- A. 1: N
- B. 0.042361111111111111
- C. N: 1
- D. N: M

**Answer: B (LEAVE A REPLY)**

**NEW QUESTION: 61**

Regarding BGP MED, which of the following descriptions are correct? (Multiple questions)

- A. In BGP routing rules, the priority of MED is lower than AS Path, Preferred-Value, Local-Preference and Origin
- B. By default, if there is no MED value in the route attribute, it will be treated as 0. If the bestroute med-none-as-maximum command is configured, the MED will be processed as the maximum value of 4294967295
- C. By default, BGP routing rules can compare the MED of routes from different autonomous systems
- D. The default value of BGP route MED is 0

**Answer: A,B,D (LEAVE A REPLY)**

**Valid H12-261\_V3.0-ENU Dumps** shared by PrepPdf.com for Helping Passing H12-261\_V3.0-ENU Exam! PrepPdf.com now offer the **newest H12-261\_V3.0-ENU exam dumps**, the PrepPdf.com H12-261\_V3.0-ENU exam **questions have been updated** and **answers have been corrected** get the **newest** PrepPdf.com H12-261\_V3.0-ENU dumps with Test Engine here: [https://www.preppdf.com/Huawei/H12-261\\_V3.0-ENU-prepaway-exam-dumps.html](https://www.preppdf.com/Huawei/H12-261_V3.0-ENU-prepaway-exam-dumps.html) (485 Q&As Dumps, **40%OFF Special Discount: Exam-Tests**)

**NEW QUESTION: 62**

How many bits are there in the tag field of MPL S?

- A. 20
- B. 8

C. 1

D. 3

Answer: ([SHOW ANSWER](#))

**NEW QUESTION: 63**

What message will be sent to the Agent when running NMS (Network Management Station) of SNMPV1?

A. Get, Set and Getnext

B. Trap only

C. Get, Set and GetBulk

D. Trap, Get and Set

E. Get, Set, Getnext and GetBulk

Answer: A ([LEAVE A REPLY](#))

**NEW QUESTION: 64**

The correct description in the following of BGP loop protection is: (Multiple Choice)

A. Through the AS-PATH attribute, discard any update information received from EBGP peers that contains its own AS number in the AS-PATH attribute

B. Non-RR BGP routers will not announce any update information from IBGP peers to other IBGP peers

C. Any routing information from IBGP peers will be advertised to other IBGP peers

D. DBGP routers will not announce any updates from EBGP peers to their EBGP peers

Answer: A,B ([LEAVE A REPLY](#))

**NEW QUESTION: 65**

There are many ways to establish a cluster for modular switches. What methods do Huawei modular switches support to establish a cluster? (Multiple Choice)

A. Established through the cluster daughter card on the interface board

B. Established through the cluster card on the switching network board

C. Established through the cluster card on the main control board

D. Established through the business interface on the interface board

Answer: ([SHOW ANSWER](#))

**NEW QUESTION: 66**

As-path-filter:ip as-path-filter 1 permit\*(1001400 ) \$ is existing, which AS\_PATH attributes may be matched by the As-path-filter?

A. 300 4200

B. 3100

C. 1234 1400

D. 100

Answer: B,C,D ([LEAVE A REPLY](#))

**NEW QUESTION: 67**

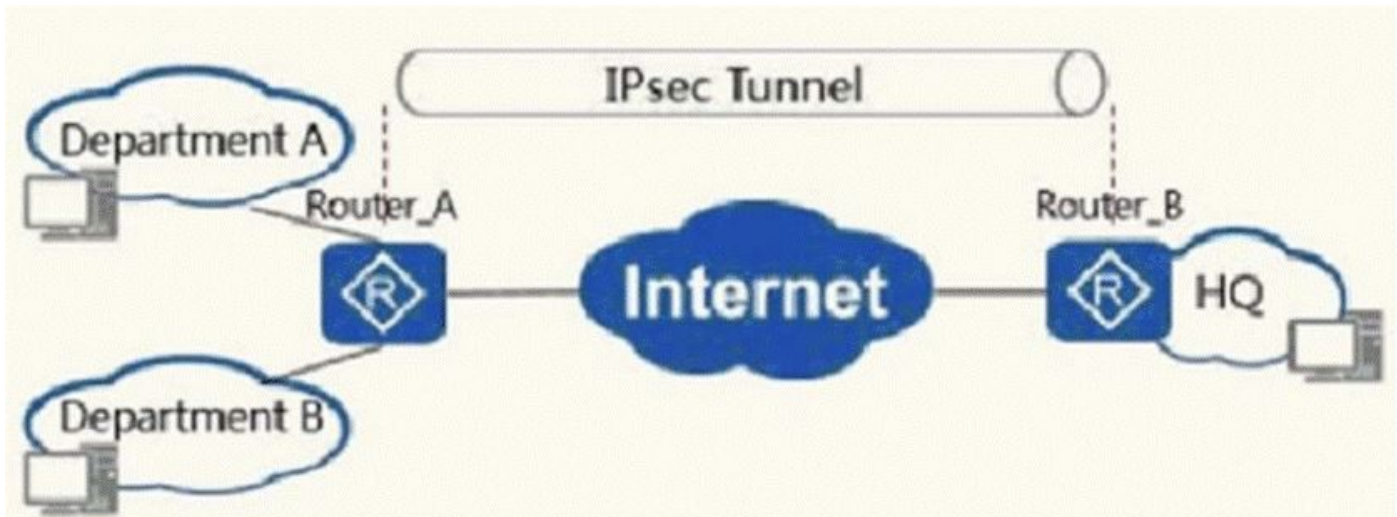
Which of the following scenarios does not need to use RPF detection?

- A. When the RP in the PIM SM establishes a source tree to the multicast source
- B. When receiving a pruning message in PIM SM
- C. When establishing a shared tree to the RP in PIM SM
- D. When the router in PIM SM receives the multicast data stream

**Answer:** ([SHOW ANSWER](#))

**NEW QUESTION: 68**

As shown in the figure, the A department of branch 1 can access the Internet, but the B department can only use the encrypted VPN to access the headquarters resources. You can configure the NAT policy on the export device so that department A can access the Internet and configure IPsec VPN (ESP protocol) for department B + tunnel mode method to allow it to access the headquarters.



- A. True
- B. False

**Answer:** A ([LEAVE A REPLY](#))

**NEW QUESTION: 69**

Single selection After configuring the VLAN-based MAC address drift detection function, if the MAC address drifts, you can configure the actions of the interface according to your needs.

Which of the following is not a configurable action?

- A. Interface blocking
- B. MAC address blocking
- C. Flow filtering
- D. Send alert

**Answer:** C ([LEAVE A REPLY](#))

**NEW QUESTION: 70**

What are the wrong statements about OSPF Router LSA and Network LSA? (Multiple questions)

- A. Routers running OSPF must generate Router LSA
- B. Router LSA and Network LSA must exist in the OSPF network at the same time
- C. Network LSA carries both topology and routing information
- D. Routers running OSPF must generate Network LSA

Answer: ([SHOW ANSWER](#))

#### NEW QUESTION: 71

Regarding the description of the label encapsulation format in MPLS, which is correct? (Multiple questions)

- A. The total length of a single MPLS label is 4 bytes (32 bits)
- B. The S field in the label, 1bit is used to identify whether the label is the bottom label of the stack, when the value is 1, it indicates the second-to-last label
- C. For Ethernet and PPP packets, the label stack is like a "cushion", located between the Layer 2 header and the data. When there is a VLAN tag, the MPLS header is placed between the Ethernet header and the VLAN tag.
- D. The TTL field in the label is similar to the TTL (Time To Live) in the IP packet, and it also has the effect of preventing loops.

Answer: ([SHOW ANSWER](#))

#### NEW QUESTION: 72

Which of the following description on OSPFV3 message is correct? (Multiple choice)

- A. The Hello message must contain the interface ID of the sending interface
- B. The Option field of Hello and DD packets is extended to 24 bits
- C. LSACK message contains LSA header information to confirm receipt of LSU message
- D. The LSR message contains the complete LSA header information to request to update the LSA

Answer: ([SHOW ANSWER](#))

#### NEW QUESTION: 73

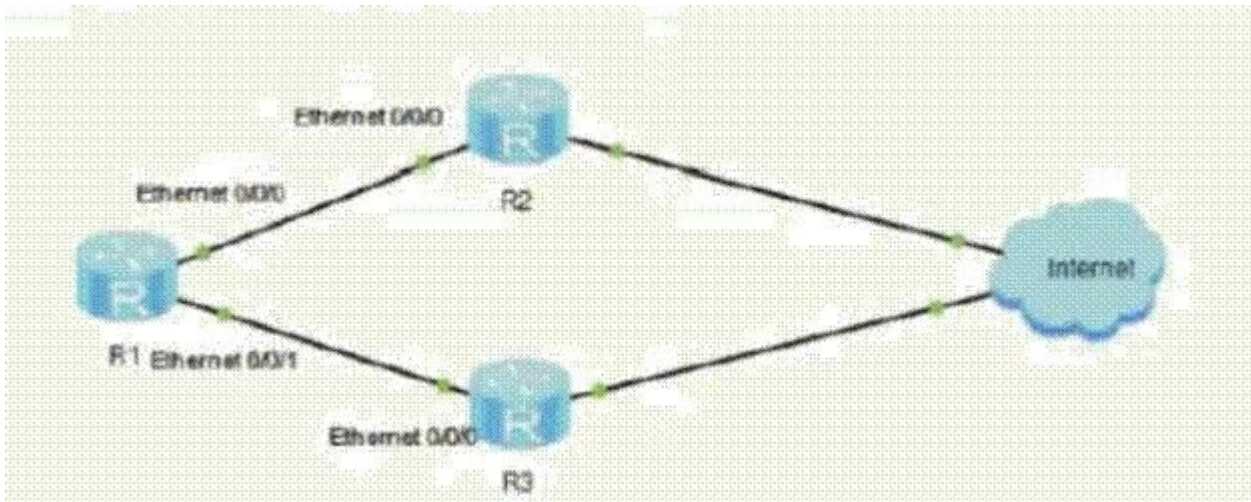
The following statement about the security confederation SA in IPsec, which is wrong?

- A. IPsec only supports the use of symmetric encryption algorithms to encrypt data.
- B. Use display IPsec to view information about encryption algorithms, traffic, and other information used between another IPsec peer.
- C. There must be two-way SA between IPsec peers to establish an IPsec VPN connection.
- D. The SA is uniquely identified by a triplet that includes the Security Parameter Index (SPI), the source IP address and the security protocol number used (AH or ESP).

Answer: ([SHOW ANSWER](#))

#### NEW QUESTION: 74

In the following topology, R1 can access the Internet through R2 and R3. The EBGP connections are established between R1 and R2, R1 and R3. R2 and R3 belong to the same AS. The default route is advertised through BGP. The traffic that R1 is required to access the Internet is preferably R2. Which of the following practices can be achieved? (Multiple Choice)



- A. R1 specifies that the peer R2 sets the local priority to 150 in the import direction.
- B. R2 specifies that the peer R1 sets the MED attribute to 150 in the export direction.
- C. R1 specifies that the peer R3 sets the MED attribute to 150 in the import direction.
- D. R2 specifies that the peer R1 sets the local priority to 150 in the export direction.

**Answer: A,B (LEAVE A REPLY)**

#### NEW QUESTION: 75

After the BGP route is imported to other protocols, the next hop in the BGP routing table is the same as the next hop of the routing protocol imported.

- A. False
- B. True

**Answer: A (LEAVE A REPLY)**

#### NEW QUESTION: 76

Which of the following statements about IS-IS (IPv6) are correct? (Multiple questions)

- A. To support the processing and calculation of IPv6 routing, IS-IS has added TLV 232, 236
- B. IS-IS works at the data link layer and only needs to add a new TLV to support IPv6
- C. By default, IS-IS enables the multi-topology feature
- D. In order to support the processing and calculation of IPv6 routing, IS-IS added NLPID in 129TLV

**Answer: A,B,D (LEAVE A REPLY)**

**Valid H12-261\_V3.0-ENU Dumps** shared by PrepPdf.com for Helping Passing H12-261\_V3.0-ENU Exam! PrepPdf.com now offer the **newest H12-261\_V3.0-ENU exam dumps**, the PrepPdf.com H12-261\_V3.0-ENU exam **questions have been updated** and **answers have**

**been corrected** get the **newest** PrepPdf.com H12-261\_V3.0-ENU dumps with Test Engine here: [https://www.preppdf.com/Huawei/H12-261\\_V3.0-ENU-prepaway-exam-dumps.html](https://www.preppdf.com/Huawei/H12-261_V3.0-ENU-prepaway-exam-dumps.html) (485 Q&As Dumps, **40%OFF Special Discount: Exam-Tests**)

**NEW QUESTION: 77**

When the payload is an ICMPv6 packet, if the extended header is not considered, what is the value of the Next Header field in the IPv6 header?

- A. 78
- B. 68
- C. 58
- D. 55

**Answer:** ([SHOW ANSWER](#))

**NEW QUESTION: 78**

The following are the statements about LDP reliability, which one is wrong?

- A. LDP GR Graceful Restart uses the feature that the MPLS forwarding plane is separated from the control plane. The device does not interrupt when the protocol is restarted or the active/standby switchover is performed.
- B. LDP FRR can also be used to generate an LSP for the label mapping from the non-optimal next hop. And it can be as a backup of the primary LSP to establish the transfer entries.
- C. The association between the LDP and the IGP requires the IGP to suppress the advertisement of the route and ensure that the LDP path is consistent with the IGP path.
- D. The manually configured LDP FRR policy defaults to a 32-bit backup route that triggers LDP to establish a backup LSP.

**Answer:** ([SHOW ANSWER](#))

**NEW QUESTION: 79**

Which of the following description is true about BGP aggregation?

- A. BGP enables automatic aggregation by default
- B. Manually aggregate routes in the BGP local routing table.
- C. For IPv6 routes, BGP supports manual aggregation and automatic aggregation.
- D. After the Aggregate ipv4-address mask is configured, only the aggregated routes are advertised and the detailed routes are not advertised.

**Answer:** ([SHOW ANSWER](#))

**NEW QUESTION: 80**

Although the STP protocol can solve the loop problem, the slow convergence of the network topology affects the user's communication quality. RSTP has made many improvements to STP. Which of the following is not an improvement of RSTP to STP?

- A. If a port does not receive the configuration BPDU sent by the upstream device within 4 consecutive Hello Time, the device considers that the negotiation with this neighbor has failed

- B. RSTP deletes 3 port states and adds 2 new port roles
- C. RSTP's port state specifications are divided according to whether the port forwards user traffic and learns MAC addresses, reducing the original five port states to three
- D. The non-root switch running RSTP sends configuration BPDUs at the interval specified by the Hello Timer. This behavior is completely performed by each device independently

**Answer: A ([LEAVE A REPLY](#))**

#### **NEW QUESTION: 81**

Which of the following information can be included in a basic network layer packet? (Multiple choice)

- A. Network layer header
- B. Data link layer header
- C. Path record
- D. Network layer tail
- E. Upper layer data

**Answer: A,E ([LEAVE A REPLY](#))**

#### **NEW QUESTION: 82**

In an MPLS VPN network, different CE devices can exchange routing information with the same PE device using different routing protocols. The routing protocols used between different CE devices and the same device are independent of each other.

- A. True
- B. False

**Answer: A ([LEAVE A REPLY](#))**

#### **NEW QUESTION: 83**

The topology map and configuration are as follows. Now I hope that there is no detailed routing entry of 10.6.3.3/32 in the R1 routing table. Which of the following statements can achieve this requirement?

(Multiple Choice)



- A. Configure filter-policy on R2, match ACL 10.0.3.3/32, and apply it in the export direction.
- B. Configure route summarization on R3 and summarize the routes to 10.0.0.0/16.
- C. Configure route summarization on R2 and summarize the routes to 10.0.0.0/16.
- D. Configure filter-policy on R1, match ACL 10.0.3.3/32, and apply it in the import direction.

**Answer:** ([SHOW ANSWER](#))

#### NEW QUESTION: 84

What command can be used to prevent users from accessing multiple devices through the HUB on the access port of the switch?

- A. [Huawei]interface GigabitEthernet 0/0/1 [Huawei-GigabitEthernet0/0 ]port link-type access [Huawei-GigabitEthernet0/0 ]port-isolate enable
- B. [Huawei]interface GigabitEthernet 0/0/1 [Huawei-GigabitEthernet0/0/1]port link type trunk [Huawei-GigabitEthernet0/0/1]port trunk allow pass vlan 10
- C. [Huawei]interface GigabitEthernet 0/0/1 [Huawei-GigabitEthernet0/0 ]port link-type access [Huawei-GigabitEthernet0/0 ]port-security enable
- D. [Huawei]interface GigabitEthernet 0/0/1 [Huawei-GigabitEthernet0/0/1]port link type access [Huawei GigabitEthernet0/0]jipsg enable

**Answer:** C ([LEAVE A REPLY](#))

**NEW QUESTION: 85**

Which of the following description of BGP neighbors are wrong? (Multiple questions)

- A. MD5 authentication must be configured for BGP to establish neighbors
- B. BGP needs to exchange link state information to establish neighbor relationships
- C. BGP router supports automatic neighbor discovery
- D. BGP needs to establish a UDP connection before establishing neighbors

**Answer: A,B,C,D ([LEAVE A REPLY](#))**

**NEW QUESTION: 86**

An existing switch runs the RSTP protocol. If the network topology changes, what will happen to the Layer 2 forwarding entries automatically learned by the switch?

- A. Except for the entries related to the edge ports that are not deleted, all other entries are deleted
- B. All entries are deleted
- C. Except for the entries related to the edge port and the entry related to the port receiving the TC message are not deleted, all other entries are deleted
- D. If the aging time is set to 15 seconds. Then the items that have exceeded the aging time will be deleted
- E. Only entries related to the port that received the TC message will be deleted

**Answer: C ([LEAVE A REPLY](#))**

**NEW QUESTION: 87**

There can be multiple nodes under a route-policy. Different node numbers are identified by node. Each node can have multiple if-match and apply clauses. Which of the following descriptions are wrong? (Multiple Choice)

- A. The relationship between different nodes is "or"
- B. The relationship between different nodes is "and"
- C. The relationship between if-match clauses under each node is "and"
- D. The relationship between if-match clauses under each node is "or"

**Answer: ([SHOW ANSWER](#))**

**NEW QUESTION: 88**

The following statements about the VRRP protocol which are correct?

- A. Both VRRPv2 and VRRPv3 support authentication.
- B. VRRPv2 is only applicable to IPv4 networks, and VRRPv3 is only applicable to IPv6 networks.
- C. VRRPv3 does not support authentication, while VRRPv2 supports authentication.
- D. The owner of the Master IP address has VRRP priority of 255, so the priority range that can be configured is 0-254.

**Answer: C ([LEAVE A REPLY](#))**

**NEW QUESTION: 89**

Which of the following description is wrong about BGP routing selection?

- A. Non-aggregated routes take precedence over aggregated routes.
- B. See the following entry in the BGP routing table: \* 172.16.1.11/32 0.0.0.0 10 0. Indicates that the route is available non-optimal.
- C. If the PrefVal and Local\_Preference are equal, if the locally generated route, the IBGP route, and the BGP preference of the EBGP route are used, the valid indication generated by this priority takes precedence.
- D. The route that is unreachable for next\_hop is invalid and does not participate in the preference.

Answer: A ([LEAVE A REPLY](#))

### NEW QUESTION: 90

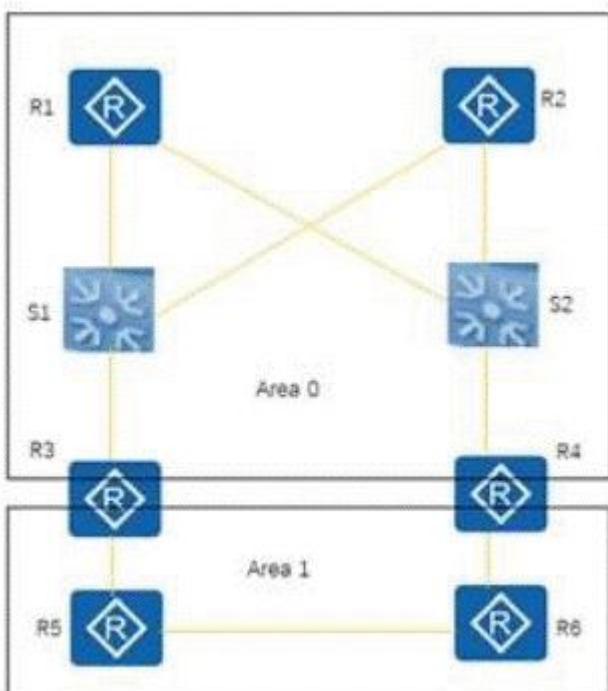
Which of the following descriptions of the OSPF protocol are correct? (Multiple choice)

- A. AS-External-LSA describes the path from the router to the ASBR
- B. The cost value of the second type of external route is only the AS external cost value, and the AS internal cost value is ignored
- C. AS-External-LSA describes the route to the external route of the AS, and the flooding scope is outside the AS
- D. AS-External-LSA does not belong to any area

Answer: B,D ([LEAVE A REPLY](#))

### NEW QUESTION: 91

A company has built an OSPF network as shown in the following figure. The links form an OSPF neighbor relationship. All devices have announced their own loopback address. On one day, the S1-R2 and S2-R1 links are faulty. Which of the following description is correct? (Area 0 is split)  
(Multiple choice)



- A. R5 can learn the loopback route of R2 normally.

- B. R3 cannot learn the loopback route of R2.
- C. R1 can learn the loopback route of R2 normally.
- D. R3 can learn the loopback route of R2 normally.

Answer: ([SHOW ANSWER](#))

**Valid H12-261\_V3.0-ENU Dumps** shared by PrepPdf.com for Helping Passing H12-261\_V3.0-ENU Exam! PrepPdf.com now offer the **newest H12-261\_V3.0-ENU exam dumps**, the PrepPdf.com H12-261\_V3.0-ENU exam **questions have been updated** and **answers have been corrected** get the **newest** PrepPdf.com H12-261\_V3.0-ENU dumps with Test Engine here: [https://www.preppdf.com/Huawei/H12-261\\_V3.0-ENU-prepaway-exam-dumps.html](https://www.preppdf.com/Huawei/H12-261_V3.0-ENU-prepaway-exam-dumps.html) (485 Q&As Dumps, **40%OFF Special Discount: Exam-Tests**)

#### NEW QUESTION: 92

Which of the following IEEE standards was developed for Gigabit Ethernet? (Multiple Choice)

- A. 802.3z
- B. 802.3ab
- C. 802.3af
- D. 802.3ad

Answer: ([SHOW ANSWER](#))

#### NEW QUESTION: 93

When configured ISIS the area authentication, which ISIS packets will carry the Bands authentication information?

- A. SNP and LSP of Level-2 of ISIS.
- B. Hello packets of Level-2 of ISIS.
- C. SNP and LSP of Level-1 of ISIS.
- D. Hello packets of Level-1 of ISIS.

Answer: ([SHOW ANSWER](#))

#### NEW QUESTION: 94

Which of the following advanced features does BGP EVPN support?

- A. ARP broadcast suppression
- B. VRRP over VXLAN
- C. VXLAN Qos
- D. Multi-live gateway

Answer: ([SHOW ANSWER](#))

#### NEW QUESTION: 95

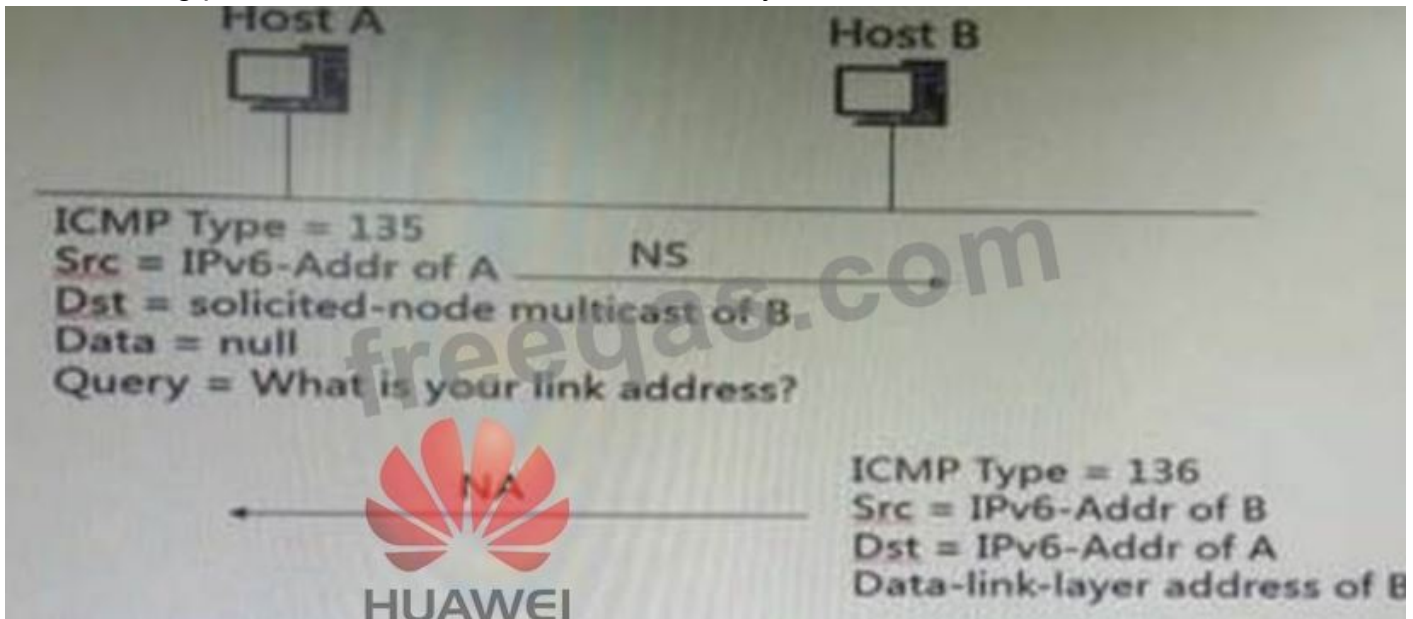
Which types of messages are supported by the BGP protocol? (Multiple Choice)

- A. Hello
- B. Open
- C. Keepalive
- D. Update

Answer: B,C,D ([LEAVE A REPLY](#))

**NEW QUESTION: 96**

The following procedure for NDP to resolve the link layer address is correct or not.



- A. True
- B. False

Answer: ([SHOW ANSWER](#))

**NEW QUESTION: 97**

The OSPFv3 Option field appears in all LSAs.

- A. False
- B. True

Answer: A ([LEAVE A REPLY](#))

**NEW QUESTION: 98**

When running OSPFv3 on a Huawei router, the OSPFv3 process will automatically select an interface address as the Router ID of the process.

- A. TURE
- B. FALSE

Answer: ([SHOW ANSWER](#))

**NEW QUESTION: 99**

When BGP EVPN Type2 routing is used to transmit IRB type routing, what does the information carried include? (Multiple choice)

- A. Layer 2 VNI
- B. Host IP address
- C. Three-tier VNI
- D. Host MAC address

**Answer: A,B,C,D ([LEAVE A REPLY](#))**

**NEW QUESTION: 100**

ISIS protocol is in broadcast network and P2P network, when the router receives the LSP, it needs to use PSNP to confirm and ensure the synchronization of the LSDB.

- A. True
- B. False

**Answer: ([SHOW ANSWER](#))**

**NEW QUESTION: 101**

Cross-device link aggregation enables data stream transmission and mutual backup of stack member switches. However, because of the limited bandwidth of stack cables between stack devices, which of the following methods can improve forwarding efficiency?

- A. Enable traffic local priority forwarding
- B. Enable stack multi-master check function
- C. Connect stack devices through stack cards
- D. Configure stack system MAC address switching

**Answer: ([SHOW ANSWER](#))**

**NEW QUESTION: 102**

BGP routing policy can control the distribution and reception of routes.

- A. TURE
- B. FALSE

**Answer: A ([LEAVE A REPLY](#))**

**NEW QUESTION: 103**

Regarding the sliding window of TCP, which of the following descriptions are wrong? (Multiple Choice)

- A. The sender announces the initial window size
- B. The sliding window size can only be increased or left unchanged
- C. TCP sliding window allows multiple packets to be sent before receiving an acknowledgment
- D. The sender does not need to transmit a complete window size message.
- E. After the retransmission timer expires, the sender has not received the acknowledgement and will retransmit the unconfirmed data.

**Answer: A,B ([LEAVE A REPLY](#))**

**NEW QUESTION: 104**

Four routers R1, R2, R3, and R4 run ISIS, the ISIS router type is marked, and the routing table is viewed on R1. The reason why R1 does not reach the route of 10.34.34.4 is

Route Flags: R - relay, D - download to fib

Routing Tables: Public  
Destinations : 5 Routes : 5

Destination/Mask	Proto	Pre	Cost	Flags	NextHop	Interface
10.12.12.0/24	Direct	0	0	D	10.12.12.1	GigabitEthernet0/0/0
10.12.12.1/32	Direct	0	0	D	127.0.0.1	GigabitEthernet0/0/0
10.23.23.0/24	ISIS-L1	15	20	D	10.12.12.2	GigabitEthernet0/0/0

49.0001

R2-L1/2 --- 10.23.23.2/24 --- R3-L2 --- 10.23.23.3/24 --- R4-L2 --- 10.34.34.4/24

R1-L1 --- 10.12.12.2/24 --- R2-L1/2 --- 10.12.12.1/24 --- R1-L1

R3-L2 --- 10.34.34.3/24 --- R4-L2

- A. Configure a routing policy on R2 to filter the default route.
- B. R2's system-ID conflicts with R3
- C. Regional planning errors for R3 and R4
- D. R2's system-ID conflicts with R1

Answer: C ([LEAVE A REPLY](#))

#### NEW QUESTION: 105

IPSG can configure static binding table or use DHCP-snooping to form a binding table.

- A. False
- B. True

Answer: B ([LEAVE A REPLY](#))

#### NEW QUESTION: 106

In the ISIS broadcast network database synchronization process, the following statement which is correct?



- A. R2 acts as DIS will not receive PSNP requests for other routes.

- B. R2 acts as DIS and periodically sends CSNP.
- C. R2 acts as DIS, and the Hello time is three times than the ordinary router.
- D. R1 and R3 maintain database consistency by periodically sending PSNP requests.

**Answer:** ([SHOW ANSWER](#))

**Valid H12-261\_V3.0-ENU Dumps** shared by PrepPdf.com for Helping Passing H12-261\_V3.0-ENU Exam! PrepPdf.com now offer the **newest H12-261\_V3.0-ENU exam dumps**, the PrepPdf.com H12-261\_V3.0-ENU exam **questions have been updated** and **answers have been corrected** get the **newest** PrepPdf.com H12-261\_V3.0-ENU dumps with Test Engine here: [https://www.preppdf.com/Huawei/H12-261\\_V3.0-ENU-prepaway-exam-dumps.html](https://www.preppdf.com/Huawei/H12-261_V3.0-ENU-prepaway-exam-dumps.html) (485 Q&As Dumps, **40%OFF Special Discount: Exam-Tests**)

**NEW QUESTION: 107**

Which of the following is not the role of EVPN Type2 routing?

- A. Host IP route Announcement
- B. BUM message forwarding
- C. Host MAC address Announcement
- D. Host ARP Announcement

**Answer:** B ([LEAVE A REPLY](#))

**NEW QUESTION: 108**

Two routers connected through a firewall cannot establish a BGP neighbor relationship. What is the cause?

- A. The firewall did not release the UDP port number 179
- B. BGP neighbors must form a 2-layer adjacency
- C. The firewall did not let go of the IP protocol number 89
- D. EBGP Multi-hop is not configured

**Answer:** A ([LEAVE A REPLY](#))

**NEW QUESTION: 109**

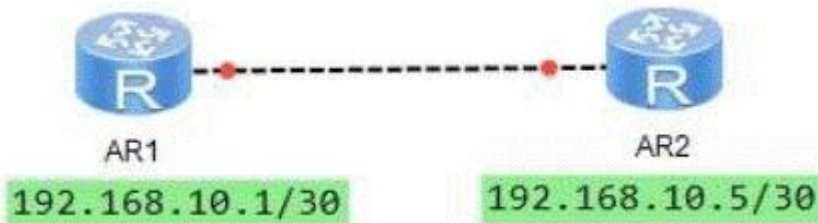
What is the main reason why RSTP converges faster than STP?

- A. RSTP has a smaller timer
- B. RSTP is not based on timer convergence
- C. RSTP increases the type of port status
- D. RSTP has less overhead

**Answer:** ([SHOW ANSWER](#))

**NEW QUESTION: 110**

If the PPP link between R1 and R2 is shown, and the direct connection port is not on the same network segment, but the R1 and R2 direct connection ports can communicate, and the Ethernet link cannot communicate under the same IP planning, what is the reason? (Multiple choice)

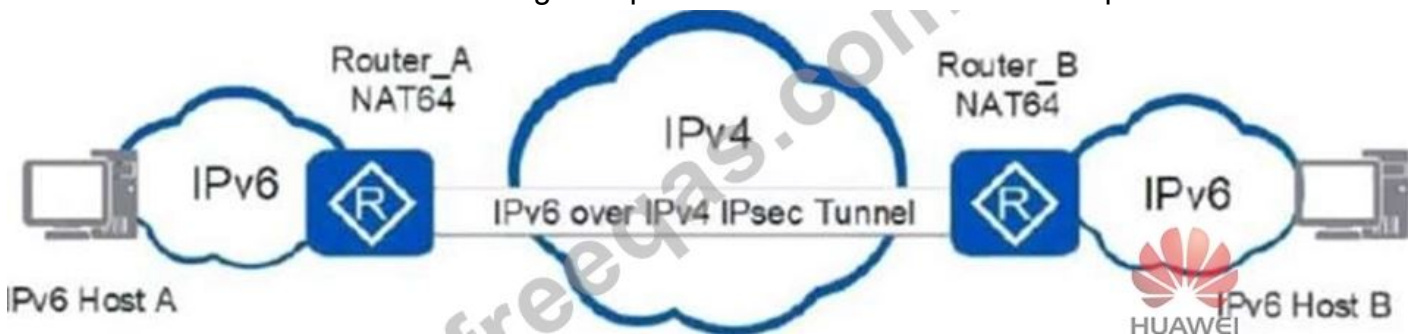


- A. R1 and R2 are connected to the POS port, and the 24-bit subnet route of the direct connection port of the other party is learned through IPCP.
- B. The interconnected POS port of R1 and R2 learns the MAC address of the peer interface through LCP, and does not require the ARP request MAC address.
- C. The data packets of the interconnected POS interface of R1 and R2 do not need to encapsulate the Ethernet header, and do not need to use ARP to request the MAC address.
- D. R1 and R2 are connected to the POS port, and the 32-bit host route of the direct connection port of the other party is learned through IPCP.

Answer: ([SHOW ANSWER](#))

**NEW QUESTION: 111**

As shown in the figure, there are two IPv6 networks that can access the IPv4 network. At the same time, an IPSEC tunnel needs to be established between the two IPv6 networks for communication. Which of the following encapsulation modes can meet the requirements above?



- A. AH + tunnel mode
- B. None of the above options
- C. ESP + tunnel mode
- D. AH + transmission mode

Answer: ([SHOW ANSWER](#))

**NEW QUESTION: 112**

In an MPLS BGP VPN network that does not enable the MPLS penultimate hop pop-up technology, when the message reaches the last hop PE, the message has two layers of labels, and the two layers of label values can be the same.

- A. TURE

B. FALSE

Answer: A ([LEAVE A REPLY](#))

**NEW QUESTION: 113**

Which of the following description is wrong about the MAC address spoofing attack?

- A. MAC address spoofing attacks will cause the switch to learn the wrong mapping relationship between Mac address and IP address
- B. MAC address spoofing attacks mainly use the switch Mac address learning mechanism
- C. Attackers can implement MAC address spoofing attacks by sending data frames with forged source Mac addresses to the switch
- D. MAC address spoofing attacks will cause the data that the switch to send to the correct destination is sent to the attacker

Answer: A ([LEAVE A REPLY](#))

**NEW QUESTION: 114**

As shown in the figure, all routers run OSPF. Which of the following statements is correct?



- A. R2 forwards the Router LSA generated by R3 to R1
- B. R2 only generates Router LSA in area 0
- C. R2 forwards the Router LSA generated by R1 to R3
- D. R2 generates Router LSA in both area 1 and area 0

Answer: D ([LEAVE A REPLY](#))

**NEW QUESTION: 115**

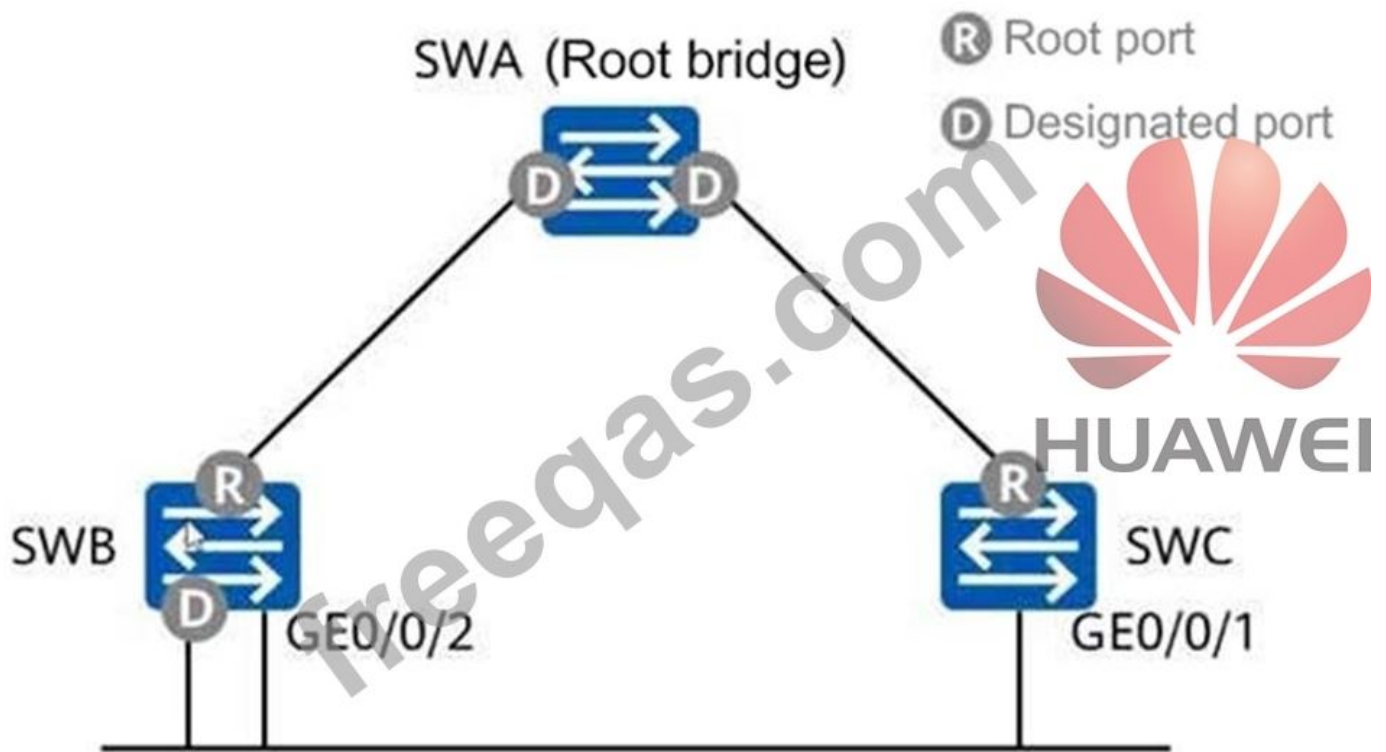
Regarding BGP4+, which of the following statements is correct? (Multiple choice)

- A. BGP4+ carries the next hop address of the route through the Network Address of Next Hop in the MP\_REACH NL RI attribute
- B. BGP4+ carries the next hop address of the IPv6 route through the NEXT\_HOP attribute
- C. The NEXT\_HOP attribute does not exist in BGP4+
- D. BGP4+ carries the prefix and mask length of IPv6 routes through the NL RI attribute

Answer: ([SHOW ANSWER](#))

**NEW QUESTION: 116**

As shown in the figure, SWA, SWB, and SWC all run RSTP. What are the port roles of GE0/0/2 on SWB and GE0/0/1 on SWC?



- A. Root port, Designated port
  - B. Backup port, Root port
  - C. Backup port, Alternative port
  - D. Alternative port, Backup port
- Answer: C (LEAVE A REPLY)**

**NEW QUESTION: 117**

Which of the following description about the label space of MPLS is wrong?

- A. When the penultimate hop LSR performs label switching, if the value of the label after the exchange is found to be 3, the label will be ejected by default and the packet will be sent to the last hop
- B. 16~1023 is the label space shared by static LSP and static CR-L SP
- C. Above 1024 is the label space shared by dynamic signaling protocols such as LDP, RSVP-TE, MP-BGP, etc.
- D. If the outgoing label value is 0, the router will directly discard the packet

**Answer: (SHOW ANSWER)**

**NEW QUESTION: 118**

ping -a X -c Y -s Z -vpn-instance M 10.5.2, what is the meaning of this command? (Multiple choice)

- A. The ping sends Y ICMP requests
- B. The source IP address of the ping packet is X
- C. The ICMP request of the ping, the packet size is Z (excluding IP and ICMP header)
- D. The ping packet belongs to VPN instance M

**Answer: A,B,C,D ([LEAVE A REPLY](#))**

**NEW QUESTION: 119**

Router HW is enabled with OSPF and the role of the router HW is ABR, and abr -summary is configured. Which classes of LSA will be aggregated? (Multiple Choice)

- A. Type 4 LSA
- B. Type 2 LSA
- C. Type 3 LSA
- D. Type 1 LSA
- E. Type 5 LSA

**Answer: ([SHOW ANSWER](#))**

**NEW QUESTION: 120**

Application of the two-speed double-barrel in traffic policing, the number of tokens in the C bucket is TC, a number of tokens in P bucket is TP. When a packet of length B enters, which of the following statements is correct? (Multiple choice)

- A. If  $TP-B > 0$  and  $TC-B < 0$ , the packet is marked as green.
- B. If  $TP-B < 0$  and  $TC-B < 0$ , the packet is marked as red.
- C. If  $TP-B > 0$  and  $TC-B < 0$ , the packet is marked as yellow.
- D. If  $TP-B > 0$  and  $TC-B > 0$ , the packet is marked as green.

**Answer: ([SHOW ANSWER](#))**

**NEW QUESTION: 121**

RD is used to distinguish the same IP address in different VPNs. How many bits does the RD contain?

- A. 64
- B. 128
- C. 32
- D. 16

**Answer: A ([LEAVE A REPLY](#))**

**Valid H12-261\_V3.0-ENU Dumps** shared by PrepPdf.com for Helping Passing H12-261\_V3.0-ENU Exam! PrepPdf.com now offer the **newest H12-261\_V3.0-ENU exam dumps**, the PrepPdf.com H12-261\_V3.0-ENU exam **questions have been updated** and **answers have been corrected** get the **newest** PrepPdf.com H12-261\_V3.0-ENU dumps with Test Engine

here: [https://www.preppdf.com/Huawei/H12-261\\_V3.0-ENU-prepaway-exam-dumps.html](https://www.preppdf.com/Huawei/H12-261_V3.0-ENU-prepaway-exam-dumps.html) (485 Q&As Dumps, **40%OFF Special Discount: Exam-Tests**)

**NEW QUESTION: 122**

Which of the following options may affect the establishment of IBGP neighbors? (Multiple Choice)

- A. The BGP protocol version is inconsistent
- B. IBGP-Multi-hop is not configured
- C. Authentication is unsuccessful
- D. IGP routing is unreachable

**Answer: A,C,D ([LEAVE A REPLY](#))**

**NEW QUESTION: 123**

In Huawei devices, when ISIS imports external routes and sets external route tags for routing information, the metric type of ISIS does not need to be modified, just keep the default.

- A. False
- B. True

**Answer: ([SHOW ANSWER](#))**

**NEW QUESTION: 124**

RSTP provides different protection functions in different scenarios. Which statement is wrong? (Multiple choice)

- A. After the anti-TC-BPDU packet attack function is enabled, the number of times the switching device processes TC BPDU packets in a unit time can be configured
- B. Enable the designated port of root protection. When the port receives a better RST BPDU, the port will enter the Discarding state and no longer forward packets. If the port does not receive a better RST BPDU within a period of time, it will automatically return to the normal Forwarding state
- C. After the BPDU protection function is activated on the switching device, if the edge port receives the RST BPDU, the edge port will be set as a non-edge port, and the spanning tree calculation will be performed again
- D. The designated port with root protection function enabled, its end [role can only remain as designated port

**Answer: A,B,C,D ([LEAVE A REPLY](#))**

**Valid H12-261\_V3.0-ENU Dumps** shared by PrepPdf.com for Helping Passing H12-261\_V3.0-ENU Exam! PrepPdf.com now offer the **newest H12-261\_V3.0-ENU exam dumps**, the PrepPdf.com H12-261\_V3.0-ENU exam **questions have been updated** and **answers have been corrected** get the **newest** PrepPdf.com H12-261\_V3.0-ENU dumps with Test Engine

here: [https://www.preppdf.com/Huawei/H12-261\\_V3.0-ENU-prepaway-exam-dumps.html](https://www.preppdf.com/Huawei/H12-261_V3.0-ENU-prepaway-exam-dumps.html) (485  
Q&As Dumps, **40%OFF** Special Discount: **Exam-Tests**)