

Huawei.H13-821_V2.0-ENU.v2022-09-22.q217

Exam Code:	H13-821_V2.0-ENU
Exam Name:	HCIP-Cloud Service Solutions Architect V2.0
Certification Provider:	Huawei
Free Question Number:	217
Version:	v2022-09-22
# of views:	3170
# of Questions views:	2170
https://www.freeqas.com/qa/Huawei/H13-821_V2.0-ENU/Huawei.H13-821_V2.0-ENU.v2022-09-22.q217.html	

NEW QUESTION: 1

HUAWEI CLOUD distributed database middleware DDM service solves the problem of database scalability and realizes high concurrent access to massive data of applications.

- A. False
- B. True

Answer: B ([LEAVE A REPLY](#))

NEW QUESTION: 2

The subsidiaries of a certain enterprise group are distributed all over the country, and each subsidiary has its own system. The headquarter of the group wants to aggregate the data of these 11 systems to realize group information sharing. Which of the following core Platform service of the smart park solution will be used to solve this problem? (Multiple choice)

- A. Video Cloud
- B. OcarConnect
- C. MRS
- D. DAYU
- E. ROMA

Answer: (SHOW ANSWER)

NEW QUESTION: 3

Which of the following contents cannot be restored through the database recycle bin for HUAWEI CLOUD tenants?

- A. Instance version information
- B. Instance disk information
- C. User password
- D. Back up data

Answer: C ([LEAVE A REPLY](#))

NEW QUESTION: 4

Which of the following options are the main challenges facing general e-commerce platforms? (Multiple choice)

- A. Responding to the high risk of business surges
- B. Security is difficult to guarantee
- C. Poor user experience
- D. Lack of data support for business decisions

Answer: A,B,C,D ([LEAVE A REPLY](#))

NEW QUESTION: 5

In the topology diagram of HUAWEI CLOUD Application Performance Management Service, each arrow line represents a call relationship, and different colors represent the health of Apdet (Application Performance Index is an industry standard for evaluating application performance developed by the Apdex Alliance) of the call relationship. Which of the following description is correct about the red dotted arrow line?

- A. Application and instance are not called
- B. The application, instance, or transaction responds slowly when called, and the user experience is like
- C. When the application, instance, or transaction is called, the response is extremely slow, and the user experience is poor
- D. When the application, instance or transaction is called, the response is fast, and the user experience is more satisfactory

Answer: C ([LEAVE A REPLY](#))

NEW QUESTION: 6

Gartner believes that microservices will become mainstream in the future. Which are the core objectives of the microservices architecture? (Multiple Choice)

- A. Development agility
- B. Precise scalability
- C. Online Request Tracing
- D. Flexible flexibility (deployment flexibility)

Answer: A,B,D ([LEAVE A REPLY](#))

NEW QUESTION: 7

The strategies supported by the automatic load balancing mechanism provided by the microservice engine include: sequential, random local, sticky, instance-based load, etc.

- A. True
- B. False

Answer: ([SHOW ANSWER](#))

NEW QUESTION: 8

Regarding the description of HUAWEI CLOUD Application Service Grid, which of the following statements is wrong?

- A. Commercial transformation of the open source Istio project based on Huawei Cloud Container Service
- B. Cloud application service grid development framework is not limited to language
- C. Provide container-based gray release and traffic management capabilities
- D. Need to integrate Istio SDK

Answer: B ([LEAVE A REPLY](#))

NEW QUESTION: 9

A startup customer needs to deploy a portal based on HUAWEI CLOUD. What type of elastic cloud server is recommended for the customer to purchase?

- A. Computationally intensive
- B. General purpose
- C. Storage intensive
- D. Memory-intensive

Answer: B ([LEAVE A REPLY](#))

NEW QUESTION: 10

Which of the following cloud services must the AS instance be used with? (Multiple choice)

- A. ELB
- B. ECS
- C. IMS
- D. EIP

Answer: A,B,C,D ([LEAVE A REPLY](#))

NEW QUESTION: 11

From the perspective of the cloud security shared responsibility model, which of the following is not the security responsibility of HUAWEI CLOUD?

- A. Tenant security group and security policy configuration management
- B. HUAWEI CLOUD's infrastructure security
- C. Comply with the security laws and regulations of the place where HUAWEI CLOUD operates
- D. Operational security of HUAWEI CLOUD services

Answer: A ([LEAVE A REPLY](#))

NEW QUESTION: 12

Which of the following options is not a way to improve e-commerce user experience?

- A. Use site content to separate dynamic and static to achieve a smooth site experience
- B. Cache static product images in ELB, which reduces the pressure on the web and improves the user experience
- C. Configure CDN to achieve static page acceleration
- D. The static files are stored in the HUAWEI CLOUD OBS bucket, and the static page acceleration can be realized by supporting the HUAWEI CLOUD CDN through the OBS link

Answer: B ([LEAVE A REPLY](#))

NEW QUESTION: 13

After the user deploys the application, it is necessary to manually bury the point in the code so that APM can monitor the performance of the application.

- A. False

B. True

Answer: A ([LEAVE A REPLY](#))

NEW QUESTION: 14

A company builds a video-on-demand system based on HUAWEI CLOUD. Which of the following types of cloud services is recommended? (Multiple choice)

- A. CDN
- B. VCM
- C. MPC
- D. OBS

Answer: A,B,C,D ([LEAVE A REPLY](#))

NEW QUESTION: 15

Which of the following cloud services are recommended for HUAWEI CLOUD tenants to purchase to protect against XSS attacks?

- A. Enterprise Host Security HSS
- B. DDoS high defense
- C. Vulnerability scan VSS
- D. Application firewall WAF

Answer: D ([LEAVE A REPLY](#))

NEW QUESTION: 16

The transaction of HUAWEI CLOUD APM represents a complete process from "user request>webserver>DB>webserver>user request", which is usually expressed as an HTTP request. In real life, a transaction is a task, for example, a query of a product in an e-commerce application is a transaction. In the following figure, an application operation and maintenance transaction page, which statement is wrong?

Name	Transaction alias	Number of calls	Overall delay	Number of errors(ms)	Apdex
POST_/product/product*	Purchase goods	60	50	17	0.72
POST_/user/user*	User registration	61	1019	9	0.5
GET_/product/product*	Query product	120	21	0	1

- A. The Apdex value of the transaction "Purchase Goods" is 0.72, the most likely reason is that the overall delay of the transaction is too long
- B. Click the icon in the action column to jump to the topology map
- C. The Apdex value of the transaction "user registration" is 0.5, the most likely reason is that the overall delay of the transaction is too long

D. Only the status of "Query Goods" is healthy

Answer: ([SHOW ANSWER](#))

Valid H13-821_V2.0-ENU Dumps shared by PrepPdf.com for Helping Passing H13-821_V2.0-ENU Exam!
PrepPdf.com now offer the **newest H13-821_V2.0-ENU exam dumps**, the PrepPdf.com H13-821_V2.0-ENU exam **questions have been updated** and **answers have been corrected** get the **newest** PrepPdf.com H13-821_V2.0-ENU dumps with Test Engine here: https://www.preppdf.com/Huawei/H13-821_V2.0-ENU-prepaway-exam-dumps.html (653 Q&As Dumps, **40%OFF Special Discount: Exam-Tests**)

NEW QUESTION: 17

The GES service can support Gremlin graph query language.

- A. False
- B. True

Answer: B ([LEAVE A REPLY](#))

NEW QUESTION: 18

With FunctionStage, you only need to write business function code and set operating conditions, without configuring and managing the servers such as infrastructure, and functions run in a flexible, free-of-operation and high-reliability manner.

- A. False
- B. True

Answer: B ([LEAVE A REPLY](#))

NEW QUESTION: 19

What are the advantages of the DWS digital warehouse relocation program? (Multiple choice)

- A. Compatible with standard SQL, reducing the cost of rewriting
- B. Support PL/pgSQL stored procedure language
- C. Has Teradata migration tool
- D. Has Oracle migration tools

Answer: ([SHOW ANSWER](#))

NEW QUESTION: 20

Which of the following is a function of Huawei Cloud Blockchain Service? (Multiple choice)

- A. Gay encryption mechanism
- B. PBFT consensus algorithm
- C. Online chain code editor
- D. National secret algorithm

Answer: A,B,C,D ([LEAVE A REPLY](#))

NEW QUESTION: 21

Which of the following options is not a function of the HUAWEI CLOUD RDS Recycle Bin?

- A. After the subscription period instance is unsubscribed and deleted, the instance can be restored from the recycle bin within a limited period of time
- B. After the on-demand instance is deleted, the instance can be restored from the recycle bin within a limited period of time
- C. After the subscription period instance is frozen and deleted, the instance can be restored from the recycle bin within a limited period of time
- D. After the failed instance is deleted, the instance can be restored from the recycle bin within a limited period of time

Answer: D ([LEAVE A REPLY](#))

NEW QUESTION: 22

Which of the following descriptions about HiLens Kit is wrong?

- A. HiLens Kit has built-in Yiteng 310 chip, which can analyze and process multiple channels of video at the same time
- B. HiLens Kit is suitable for indoor and outdoor scenes
- C. HiLens supports audio input, audio output, WiFi, USB interface, network interface, SD card
- D. HiLens Kit supports any network camera connected to RTSP protocol

Answer: B ([LEAVE A REPLY](#))

NEW QUESTION: 23

Which of the following components can be included in an MRS cluster? (Multiple choice)

- A. Flink
- B. MongoDB
- C. HBase
- D. MySQL

Answer: ([SHOW ANSWER](#))

NEW QUESTION: 24

Which of the following options are the application scenarios of Huawei Cloud's multi-cloud container platform and hybrid cloud solution? (Multiple choice)

- A. Traffic sharing
- B. Separation of core computing program from general user business
- C. More active business and disaster recovery
- D. Data and business separation
- E. Separation of development and deployment

Answer: A,B,C,D,E ([LEAVE A REPLY](#))

NEW QUESTION: 25

Which of the following operation and maintenance capabilities can the application operation and maintenance of the microservice cloud application platform (serviceStage) provide?

- A. Log analysis
- B. Call chain analysis
- C. Elastic expansion and contraction

- D. Alarm
- E. Node resource monitoring

Answer: A,B,C,D,E ([LEAVE A REPLY](#))

NEW QUESTION: 26

Which of the following operations performed by HUAWEI CLOUD tenants does not help to improve the security of the cloud database?

- A. Download slow log
- B. Turn on the audit log function
- C. Back up the database regularly
- D. Modify the database port

Answer: ([SHOW ANSWER](#))

NEW QUESTION: 27

Which of the following options are the value characteristics of the blockchain? (Multiple choice)

- A. Tamper-proof and traceable
- B. Transparent and credible
- C. Multi-party consensus
- D. Non-repudiation

Answer: A,B,C,D ([LEAVE A REPLY](#))

NEW QUESTION: 28

ICAgent is the collection agent of APM. It runs on the elastic cloud server where the application is located. It is used to collect monitoring data such as topology and call chain in real time. Which of the following statements is incorrect?

- A. The application launched through the Services tage can automatically complete the deployment of the collection probe
- B. The resource overhead of each collection probe is extremely small and will not affect the business
- C. Support data collection for applications developed in C language
- D. Realize non-intrusive data collection through JVM bytecode technology, users do not need to modify business code

Answer: ([SHOW ANSWER](#))

NEW QUESTION: 29

TP99 delay is the minimum time required to satisfy 99% of network requests.

- A. False
- B. True

Answer: B ([LEAVE A REPLY](#))

NEW QUESTION: 30

Compared with traditional swipe-type turnstiles, what are the advantages of face turnstiles? (Multiple choice)

- A. Accurately identify the identity of visitors
- B. Prevent punching and cheating on behalf of others
- C. Manage the flow of people and regulate pedestrian access

D. Improve traffic efficiency

Answer: A,B,C,D (LEAVE A REPLY)

NEW QUESTION: 31

Which of the following components will not be used in massive data storage and offline analysis scenarios?

- A. CDM
- B. HDFS
- C. Map Reduce
- D. F link

Answer: (SHOW ANSWER)

Valid H13-821_V2.0-ENU Dumps shared by PrepPdf.com for Helping Passing H13-821_V2.0-ENU Exam!
PrepPdf.com now offer the **newest H13-821_V2.0-ENU exam dumps**, the PrepPdf.com H13-821_V2.0-ENU exam **questions have been updated** and **answers have been corrected** get the **newest** PrepPdf.com H13-821_V2.0-ENU dumps with Test Engine here: https://www.preppdf.com/Huawei/H13-821_V2.0-ENU-prepaway-exam-dumps.html (653 Q&As Dumps, **40%OFF Special Discount: Exam-Tests**)

NEW QUESTION: 32

Regarding the description of the HUAWEI CLOUD BigData Pro big data solution, which of the following statements is correct? (Multiple choice)

- A. Computing resources can be expanded individually
- B. Use EVS to store massive amounts of data
- C. Does not support Hadoop and other open-source human data software
- D. Use OBS to store massive amounts of data
- E. The structure of separation of deposit and calculation

Answer: A,D,E (LEAVE A REPLY)

NEW QUESTION: 33

AOS (Application Orchestration Service) in the Micro Service Cloud Application Platform (ServiceStage) enables the deployment of complex distributed systems in one click.

- A. False
- B. True

Answer: B (LEAVE A REPLY)

NEW QUESTION: 34

Which of the following industry scenarios can the DWS + BI solution be applied to? (Multiple choice)

- A. Transportation industry-Analyze and count traffic flow, assist traffic diversion, and optimize congestion problems
- B. Education industry-understand the educational indicators such as enrollment, courses, graduation, etc.
- C. Medical industry-assist doctors in medical diagnosis based on statistical analysis

D. Finance-performance analysis, supporting strategies

Answer: A,B,C,D ([LEAVE A REPLY](#))

NEW QUESTION: 35

Which of the following are the advantages of cloud native? (Multiple Choice)

- A. Rapid deployment
- B. Fast service recovery
- C. Hardware virtualization
- D. Loose coupling of modules

Answer: A,B,D ([LEAVE A REPLY](#))

NEW QUESTION: 36

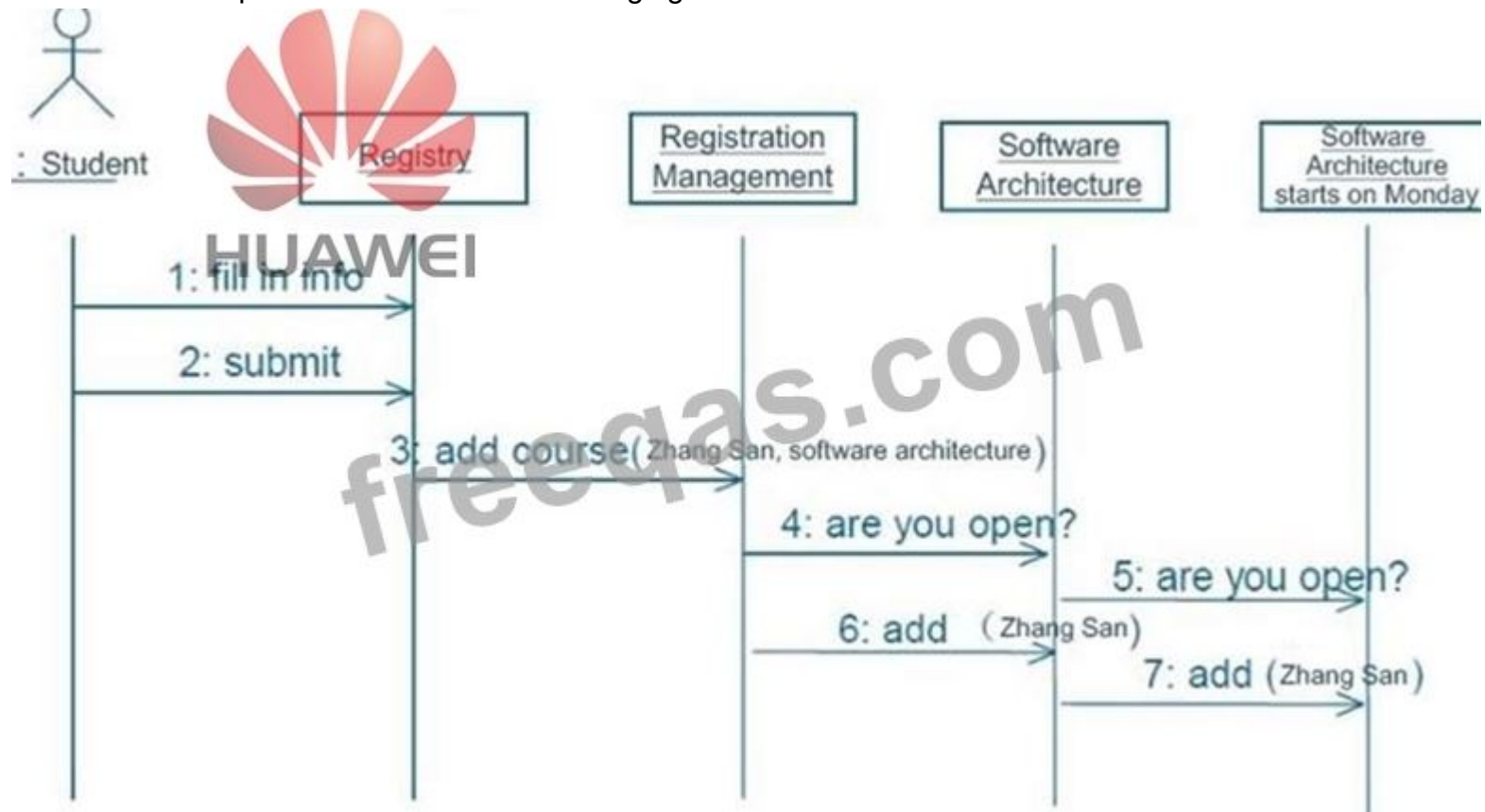
The microservices engine CSE provides a set of supporting development tools, including: (Multiple Choice)

- A. Local/Cloud Project
- B. Test Management
- C. Microservice pipeline
- D. Local/remote debugging
- E. Code/document auto generation

Answer: ([SHOW ANSWER](#))

NEW QUESTION: 37

What kind of the picture in UML of the following figure?



A. Use case diagram

- B. Sequence diagram
- C. State diagram
- D. Class diagram

Answer: ([SHOW ANSWER](#))

NEW QUESTION: 38

What level of affinity and anti-affinity does Huawei Cloud Container Engine support? (Multiple choice)

- A. Cluster
- B. Application
- C. node
- D. Network

Answer: B,C ([LEAVE A REPLY](#))

NEW QUESTION: 39

The Data Lake Discovery Service is an on-demand billing service. What is the billing unit?

- A. Number of clusters
- B. Computing resource usage time, cu hour
- C. Number of people used
- D. Number of nodes

Answer: B ([LEAVE A REPLY](#))

NEW QUESTION: 40

If the enterprise develops or maintains middleware itself, the enterprise needs to handle the installation and deployment of software and hardware, faults and maintenance, and bug fixes, if it uses the cloud middleware service, it can be used out of the box.

- A. False
- B. True

Answer: ([SHOW ANSWER](#))

NEW QUESTION: 41

Which of the following factors can mainly drive the rapid development of edge computing? (Multiple choice)

- A. Massive data: The explosive growth of edge data in the Internet of Things era makes it difficult to directly transmit back to the cloud and is costly. The data is analyzed and filtered locally to save network bandwidth.
- B. Low latency: In order to meet the requirements of low latency, it is necessary to build solutions at the nearest "edge" of high-service sites to reduce service processing latency
- C. Local autonomy: does not rely on the offline processing capabilities and self-recovery capabilities of the cloud
- D. Privacy and security: Data involves the security of enterprise production and business activities, and the company's confidential information and customer privacy are handled at the edge

Answer: ([SHOW ANSWER](#))

NEW QUESTION: 42

Which of the following features of Linux is used by docoker's resource isolation?

- A. aufs
- B. SELinux
- C. namespace
- D. Cgroup

Answer: C ([LEAVE A REPLY](#))

NEW QUESTION: 43

The user must manually bury the point in the service code to enable the Huawei cloud application operation and maintenance service to collect various performance information of the user application.

- A. True
- B. False

Answer: B ([LEAVE A REPLY](#))

NEW QUESTION: 44

If an autonomous driving company wants to develop an AI model based on ModelArts, what capabilities of ModelArts can be used? (Multiple choice)

- A. Online coding platform
- B. Preset related algorithms for autonomous driving
- C. Data annotation
- D. Data processing

Answer: C,D ([LEAVE A REPLY](#))

NEW QUESTION: 45

Which of the following is not a key feature of HUAWEI CLOUD distributed messaging DMS service?

- A. Flexible queue type: Provide ordinary queue, FIFO queue, Kafka queue
- B. Provide hotspot data caching
- C. Supports rich message capabilities such as message filtering, message backtracking, message reposting, and broadcast messages
- D. Accumulation of tens of billions of messages

Answer: B ([LEAVE A REPLY](#))

NEW QUESTION: 46

Which types of services does Huawei Cloud include? (Multiple Choice)

- A. SaaS
- B. IaaS
- C. Solution services
- D. PaaS

Answer: ([SHOW ANSWER](#))

Valid H13-821_V2.0-ENU Dumps shared by PrepPdf.com for Helping Passing H13-821_V2.0-ENU Exam!
PrepPdf.com now offer the **newest H13-821_V2.0-ENU exam dumps**, the PrepPdf.com H13-821_V2.0-ENU exam **questions have been updated** and **answers have been corrected** get the **newest** PrepPdf.com H13-821_V2.0-ENU dumps with Test Engine here: https://www.preppdf.com/Huawei/H13-821_V2.0-ENU-prepaway-exam-dumps.html (653 Q&As Dumps, **40%OFF Special Discount: Exam-Tests**)

NEW QUESTION: 47

Which of the following commands does not belong to the category of dockerile commands?

- A. FROM
- B. CD
- C. COPY
- D. MAINATNER

Answer: B (LEAVE A REPLY)

NEW QUESTION: 48

Which of the following options are the factors that need to be considered in the performance design of the cloud system?
(Multiple choice)

- A. Stress test
- B. Network bandwidth billing method selection
- C. Flexible design
- D. Instance specifications

Answer: (SHOW ANSWER)

NEW QUESTION: 49

What types of clusters does CCE currently support?

- A. Virtual machine
- B. Windows
- C. All three are supported
- D. Bare metal

Answer: C (LEAVE A REPLY)

NEW QUESTION: 50

In which of the following scenarios can image recognition services be applied? (Multiple choice)

- A. Gallery management and classification
- B. Tag search
- C. Industrial Intelligent Quality Inspection
- D. Content recommendation

Answer: (SHOW ANSWER)

NEW QUESTION: 51

Models trained by ModelArts can only be deployed on online services based on ModelArts.

A. False

B. True

Answer: A ([LEAVE A REPLY](#))

NEW QUESTION: 52

PaaS is divided into Apaas (Application PaaS) and Gpaas (General PaaS). Gpaas capabilities cover: choreography deployment, monitoring operations, container engine, microservice engine, software depot, middleware, function services, and more.

A. False

B. True

Answer: B ([LEAVE A REPLY](#))

NEW QUESTION: 53

Which of the following methods is used by HUAWEI CLOUD CCI instances to ensure the security of tenant container instance isolation?

A. Tenant isolation by docking enterprise projects

B. Provide strong isolation through secure container technology Kata

C. Tenant isolation through physical machines or clusters

D. Provide CGroup to isolate tenants

Answer: B ([LEAVE A REPLY](#))

NEW QUESTION: 54

Application Operation Management AOM is a cloud operation and maintenance platform for operation and maintenance, development, operation personnel and IT managers. It monitors operation and operation data in real time in the form of logs, indicators, and events.

May I ask AOM to provide hundreds of operation and maintenance indicators, which of the following functions are also included? (Multiple choice)

A. Indicator monitoring, displaying on the indicator tree through the hierarchical relationship of resources

B. Host monitoring, to know the resource usage, trends and alarms of the host in time

C. Application panorama, with application as the center, pull through multi-dimensional correlation analysis of services, instances, hosts, middleware, etc.

D. Application monitoring: layer-by-layer correlation of applications, services, instances, containers, and processes

Answer: ([SHOW ANSWER](#))

NEW QUESTION: 55

What are the advantages of ModelArts automatic learning? (Multiple choice)

A. Low cost of use

B. Low barriers to use

C. High model accuracy

D. Wide application scenarios

Answer: A,B,C,D ([LEAVE A REPLY](#))

NEW QUESTION: 56

What functions are used in the face gate scenario program? (Multiple choice)

- A. Face database management
- B. Intrusion detection
- C. Face search
- D. Face detection

Answer: A,C,D ([LEAVE A REPLY](#))

NEW QUESTION: 57

According to the definition of CNCF, which of the following options are representative of cloud native technologies? (Multiple choice)

- A. Declarative API
- B. Microservices
- C. Container
- D. Service network
- E. Infrastructure automation

Answer: A,B,C,D,E ([LEAVE A REPLY](#))

NEW QUESTION: 58

What is used to achieve the internal access to the service in the kubernetes cluster?

- A. namespace
- B. nodePort
- C. clusterIP
- D. lloadBalancer

Answer: C ([LEAVE A REPLY](#))

NEW QUESTION: 59

Which of the following description is related to the container mirroring service (SWR)? (Multiple Choice)

- A. Safe and reliable. Mirror warehouse multi-rental height, security scanning, high efficiency and reliability (three backups).
- B. Multi-platform docking deployment. Support the deployment and invocation of users of Cloud Container Engine (CCE), Microservice Cloud Application Platform (ServiceStage), Function Stage (FunctionStage), and Container Image Service (SMR).
- C. Image management. Connect with Huawei MarketPlace to manage the charged images purchased by customers,
- D. High performance. Self-developed high-performance container network, automatic elastic scaling within seconds, and support for high-performance private clusters of bare metal containers.

Answer: ([SHOW ANSWER](#))

NEW QUESTION: 60

E-commerce website static resource acceleration can adopt static and dynamic separation of site content to achieve a smooth website experience. Distribute the content of the origin site to the acceleration node close to the user to improve the response speed and success rate of the visit.

A. False

B. True

Answer: B ([LEAVE A REPLY](#))

NEW QUESTION: 61

Which of the following is not the way to access the container application?

A. Service

B. Node Port

C. VPC

D. ELB

Answer: C ([LEAVE A REPLY](#))

Valid H13-821_V2.0-ENU Dumps shared by PrepPdf.com for Helping Passing H13-821_V2.0-ENU Exam!

PrepPdf.com now offer the **newest H13-821_V2.0-ENU exam dumps**, the PrepPdf.com H13-821_V2.0-ENU exam **questions have been updated** and **answers have been corrected** get the **newest** PrepPdf.com H13-821_V2.0-ENU dumps with Test Engine here: https://www.preppdf.com/Huawei/H13-821_V2.0-ENU-prepaway-exam-dumps.html (653 Q&As Dumps, **40%OFF Special Discount: Exam-Tests**)

NEW QUESTION: 62

HUAWEI CLOUD PaaS adheres to the company's proposition in the field of open source, "originating from open source, higher than open source, and giving back to open source", and continues to innovate based on cloud native technology to help a prosperous ecosystem.

Which of the following are the contributions of PaaS in the open source field? (Multiple choice)

A. Blockchain field: joined the Hyperledger community in 2016, the maintainer of Fabric and STL, the only one in Asia

B. Container field: CNCF start-up member, platinum member, Kubernetes community contribution domestic first, third in the world

C. Kubernetes ecology: Aiming at the industry problems of gene sequencing and edge scenarios, open source the one-stop gene sequencing computing framework KubeGene based on container technology and the management framework KubeEdge based on the Kubernetes architecture platform.

D. Microservice area: Self-developed microservice framework ServiceComb, the industry's first top-level Apache microservice project

Answer: A,B,C,D ([LEAVE A REPLY](#))

NEW QUESTION: 63

Tenants use the log function of the HUAWEI CLOUD application operation and maintenance service, and the operation and maintenance personnel do not need to log in to the nodes in the cluster to download the logs. They can view and search the logs online to locate the problem.

- A. True
- B. False

Answer: ([SHOW ANSWER](#))

NEW QUESTION: 64

What are the advantages of Huawei CCE services for stateful containers? (Multiple choice)

- A. Support a storage format
- B. Data persistence storage
- C. Data is not lost when the container instance fails or migrates
- D. Multi-instance data sharing

Answer: B,C,D ([LEAVE A REPLY](#))

NEW QUESTION: 65

The value of blockchain is to build trust between organizations that do not trust each other, reduce transaction costs, improve transaction efficiency, and promote mutual trust. Which of the following descriptions about the blockchain is wrong?

- A. Blockchain is a versatile technology that can replace databases and the Internet.
- B. Blockchain features: distributed ledger, written into the ledger through multi-party consensus, cannot be tampered, traceable, open and transparent
- C. HUAWEI CLOUD blockchain platform BCS is open, easy to use, efficient, and secure
- D. Blockchain value: promote trust, reduce transaction costs, and improve efficiency

Answer: A ([LEAVE A REPLY](#))

NEW QUESTION: 66

The main function of data encryption service is to prevent data loss and damage.

- A. False
- B. True

Answer: A ([LEAVE A REPLY](#))

NEW QUESTION: 67

Regarding the description of DDS, which of the following statements is correct? (Multiple choice)

- A. Through the configuration of VPC, subnet, security group, DDOS protection and SSL security access and other multi-layer security protection systems, it can effectively resist various malicious attacks and ensure data security
- B. DDS has a high-availability architecture of multi-node replica sets, providing extremely high service availability guarantee
- C. The replica set contains multiple replicas. When the primary node fails, DS can achieve a second-level master/backup switch

D. DDS supports read-write separation, and its write operations can only be performed on the master node in the replica set

Answer: A,B,C,D ([LEAVE A REPLY](#))

NEW QUESTION: 68

Enterprises deploy game services on HUAWEI CLOUD. The average daily bandwidth can reach 500Mbit/s, and the bandwidth can reach 2000Mbit/s during peak periods. For this scenario, which of the following options is the most suitable solution?

- A. Fixed bandwidth billing products in the package period mode
- B. Shared bandwidth with on-demand mode, billed by bandwidth
- C. Fixed bandwidth billing products in on-demand mode
- D. Enhanced 95 billing with on-demand monthly settlement mode

Answer: ([SHOW ANSWER](#))

NEW QUESTION: 69

Which of the following options are the challenges facing the microservice architecture? (Multiple choice)

- A. Increased failure probability, difficulty in monitoring and tracking, high call frequency, call chain length, increased uncontrollable factors under cross-VM and VAN communication
- B. It is easy to realize automated testing, with clear test cases, clear external dependencies, and easy access to pre-defined AP
- C. Data is no longer centrally managed and distributed to various microservices. Conventional transaction management cannot cross service boundaries.
- D. You can choose components freely according to the needs of the service, don't have to worry about dependency conflicts, microservices manage their own data

Answer: ([SHOW ANSWER](#))

NEW QUESTION: 70

If you use the HUAWEI CLOUD FunctionGraph service, if the function is not called, no billing information will be generated.

- A. False
- B. True

Answer: ([SHOW ANSWER](#))

NEW QUESTION: 71

When creating an application on the Huawei CCE page, you can choose to create multiple instances.

- A. False
- B. True

Answer: ([SHOW ANSWER](#))

NEW QUESTION: 72

AI is a new special purpose technology that can only be applied in specific fields such as face recognition machine translation.

A. False

B. True

Answer: ([SHOW ANSWER](#))

NEW QUESTION: 73

In order to cope with the sudden increase in traffic in the live broadcast scene, and it is necessary to save structured and unstructured data at the same time, what type of database combination solution is recommended for tenants?

A. DCS

B. DRS+DDS

C. RDS+DRS

D. DCS+RDS+DDS

Answer: D ([LEAVE A REPLY](#))

NEW QUESTION: 74

Which of the following is the value that the full-stack exclusive solution brings to customers? (Multiple choice)

A. Private car compliance: physical isolation can be audited to meet customer security compliance requirements for cloud business

B. Technology leadership: service capabilities are synchronized with Huawei's public cloud to maintain technology leadership

C. Development collaboration: Provide APIs and management tools consistent with Huawei's public cloud to reduce customer development and adaptation costs

D. Simple operation and maintenance: customers and Huawei cloud layered operation and maintenance, Huawei provides platform management professional operation and maintenance services, reducing customer operation and maintenance costs

Answer: ([SHOW ANSWER](#))

NEW QUESTION: 75

In the era of digital transformation, if an enterprise wants to deliver software continuously and quickly, which of the following aspects must be taken to improve the DevOps capability of the enterprise? (Multiple choice)

A. People and Organization

B. Ecology

C. Tool platform

D. Engineering method

E. Best practices

Answer: A,B,C,D,E ([LEAVE A REPLY](#))

NEW QUESTION: 76

Which of the following are the key features of Huawei's DCS service? (Multiple choice)

A. Standard specifications: support stand-alone, active and standby modes

B. Autonomous operation and maintenance: Pre-provide a large number of monitoring indicators, support custom monitoring thresholds and alarm strategies

- C. Elastic expansion: One-click elastic expansion, transparent to the business, and unaware of the business
- D. Data reliability: data persistence and backup and recovery ensure high data reliability

Answer: B,C,D (LEAVE A REPLY)

Valid H13-821_V2.0-ENU Dumps shared by PrepPdf.com for Helping Passing H13-821_V2.0-ENU Exam!
PrepPdf.com now offer the **newest H13-821_V2.0-ENU exam dumps**, the PrepPdf.com H13-821_V2.0-ENU exam **questions have been updated** and **answers have been corrected** get the **newest** PrepPdf.com H13-821_V2.0-ENU dumps with Test Engine here: https://www.preppdf.com/Huawei/H13-821_V2.0-ENU-prepaway-exam-dumps.html (653 Q&As Dumps, **40%OFF Special Discount: Exam-Tests**)

NEW QUESTION: 77

Regarding the description of GeminiDB for Cassandra materialized views, which of the following statements is incorrect?

- A. The write performance of the materialized view is lower than the normal list
- B. The materialized view and the source data table have the same read performance
- C. The data update of the materialized view is real-time
- D. Materialized views may cause high load on local nodes

Answer: B (LEAVE A REPLY)

NEW QUESTION: 78

Which of the following options is not the product value of the container delivery line?

- A. Tenants do not need to create a mirror
- B. Out of the box
- C. Seamlessly attributed to Huawei software development services
- D. Pluggable CI/CD tool
- E. End-to-end agile delivery

Answer: A (LEAVE A REPLY)

NEW QUESTION: 79

HUAWEI CLOUD provides a key management service for docking with multiple basic cloud services to provide convenient data encryption protection for tenants on the cloud. Which of the following services does not support the direct use of key instances?

- A. NAT gateway
- B. Relational Database Service (RDS)
- C. Object Storage Service (OBS)
- D. Cloud Disk Service (EVS)

Answer: A (LEAVE A REPLY)

NEW QUESTION: 80

What are the main modules of the Huawei Microservice Engine CSE? (Multiple choice)

- A. Microservice Management Center
- B. Consistency management
- C. Service Configuration Center
- D. API Gateway

Answer: [\(SHOW ANSWER\)](#)

NEW QUESTION: 81

Which benefits can the application of zero transformation of enterprise cloud solutions bring? (Multiple choice)

- A. Automated monitoring operation and maintenance service
- B. Improve resource utilization
- C. Automated deployment, high efficiency, low error rate
- D. Rolling deployment, grayscale release

Answer: [A,C,D \(LEAVE A REPLY\)](#)

NEW QUESTION: 82

Which of the following technologies is image search based on?

- A. Content review
- B. Clarity detection
- C. Deep learning

Answer: [C \(LEAVE A REPLY\)](#)

NEW QUESTION: 83

Which of the following descriptions are correct about the pain points of traditional recommendation systems? (Multiple choice)

- A. Recommendations based on historical data
- B. Poor interpretability
- C. Data sparsity issues
- D. Cold start problem

Answer: [B,C,D \(LEAVE A REPLY\)](#)

NEW QUESTION: 84

Only distributed applications can use cloud middleware.

- A. False
- B. True

Answer: [A \(LEAVE A REPLY\)](#)

NEW QUESTION: 85

Which of the following options does not belong to the framework of the LiteOS operating system?

- A. Security framework
- B. Kernel
- C. Interconnection framework

D. Multi-sensing framework

Answer: B ([LEAVE A REPLY](#))

NEW QUESTION: 86

Which of the following services does not support the management of HUAWEI CLOUD Container Platform?

- A. Cloud container instance CCI
- B. Cloud Container Engine CCE
- C. Container Image Service SWR
- D. Application Service Network ASM

Answer: D ([LEAVE A REPLY](#))

NEW QUESTION: 87

Which of the following is the 1aasi calculation service on which the CCE bare metal cluster depends?

- A. ECS
- B. BIS
- C. VPC
- D. EvS

Answer: B ([LEAVE A REPLY](#))

NEW QUESTION: 88

The Huawei CCE cloud container engine currently only supports Huawei FusionSphere and open source openstack.

- A. False
- B. True

Answer: A ([LEAVE A REPLY](#))

NEW QUESTION: 89

Which of the following is the correct step for CCE deployment application?

- A. Application access settings, container settings, application basic information settings, advanced settings
- B. Application basic information settings, application access settings, container settings, advanced settings
- C. Application basic information settings, container settings, application access settings, advanced settings
- D. Container settings, application access settings, application basic information settings, advanced settings

Answer: C ([LEAVE A REPLY](#))

NEW QUESTION: 90

Huawei CSE supports multi-language micro-service access and interworking. The supported languages include? (Multiple choice)

- A. PHP
- B. Java
- C. Python
- D. net
- E. Node. js

F. GO

Answer: A,B,C,D,E,F ([LEAVE A REPLY](#))

NEW QUESTION: 91

HUAWEI CLOUD application performance management service completes application performance data collection by installing a collection agent on the node where the application is located. The collection agent is based on the industry's Pinpoint open source project and uses JM bytecode enhancement technology to collect application indicators in a non-intrusive manner.

What kind of technology stack does not support the application developed by APM?

- A. Tomcat
- B. C++
- C. JAVA
- D. Spring

Answer: ([SHOW ANSWER](#))

Valid H13-821_V2.0-ENU Dumps shared by PrepPdf.com for Helping Passing H13-821_V2.0-ENU Exam!
PrepPdf.com now offer the **newest H13-821_V2.0-ENU exam dumps**, the PrepPdf.com H13-821_V2.0-ENU exam **questions have been updated** and **answers have been corrected** get the **newest** PrepPdf.com H13-821_V2.0-ENU dumps with Test Engine here: https://www.preppdf.com/Huawei/H13-821_V2.0-ENU-prepaway-exam-dumps.html (**653** Q&As Dumps, **40%OFF Special Discount: Exam-Tests**)

NEW QUESTION: 92

Microservice architecture will face multi-dimensional challenges. Which of the following are the challenges that microservice architecture needs to face? (Multiple Choice)

- A. Data is no longer centrally managed and distributed to various microservices. Conventional transaction management cannot cross service boundaries.
- B. It is easy to realize automated testing, with clear test cases, clear external dependencies, and easy piling (API pre-defined)
- C. You can choose components freely according to the needs of the service, and you don't have to worry about dependency conflicts. Microservices manage their own data.
- D. Increased failure probability, difficulty in monitoring and tracking, high calling frequency, long calling chain, and uncontrollable factors in cross-virtual machine and VLAN communication increase.

Answer: ([SHOW ANSWER](#))

NEW QUESTION: 93

Which of the following HUAWEI CLOUD OCR services can detect and identify multiple cards and bills in the same picture at one time?

- A. General form recognition
- B. Intelligent classification and recognition

- C. Network image recognition
- D. General text recognition

Answer: B ([LEAVE A REPLY](#))

NEW QUESTION: 94

Which of the following descriptions about the data warehouse is correct?

- A. Data warehouse is mainly used to support decision management
- B. The data source of the data warehouse is very single
- C. The data stored in the data warehouse is updated in real time
- D. Data warehouse is mainly used for online transactions

Answer: A ([LEAVE A REPLY](#))

NEW QUESTION: 95

The enterprise has purchased a fixed bandwidth product with a yearly subscription. Due to the increase in traffic of the Double Eleven service, the bandwidth needs to be temporarily upgraded for 3 days. Which of the following options is the most suitable solution?

- A. Purchase a bandwidth refueling package
- B. Directly adjust the bandwidth of the annual bandwidth product
- C. Purchase a shared data package
- D. Repurchase a large-bandwidth flexible public IP

Answer: A ([LEAVE A REPLY](#))

NEW QUESTION: 96

What kind of characteristics of pyrotechnics are used to complete video analysis in pyrotechnics recognition?

- A. Sound
- B. Visual characteristics
- C. None of the above
- D. Temperature

Answer: ([SHOW ANSWER](#))

NEW QUESTION: 97

Which of the following scenarios can the GES service be applied to? (Multiple choice)

- A. Link prediction
- B. Real-time recommendation
- C. Individual value discovery
- D. Recommended by friends

Answer: A,B,C,D ([LEAVE A REPLY](#))

NEW QUESTION: 98

From the perspective of access and management, what types of blockchain can be divided into? (Multiple choice)

- A. Public chain

- B. Alliance chain
- C. Regular sales
- D. Private chain

Answer: A,D ([LEAVE A REPLY](#))

NEW QUESTION: 99

What are the small units created, scheduled, and managed in Kubernetes?

- A. Service
- B. Node
- C. deployment
- D. Pod

Answer: D ([LEAVE A REPLY](#))

NEW QUESTION: 100

What are the three logical layers of a general web application? (Multiple choice)

- A. Access layer
- B. Data Access Layer
- C. Persistence layer
- D. Business logic layer

Answer: ([SHOW ANSWER](#))

NEW QUESTION: 101

Which of the following commands does not fall within the management scope of the docker image lifecycle?

- A. docker exec
- B. docker commit
- C. docker save
- D. docker build

Answer: A ([LEAVE A REPLY](#))

NEW QUESTION: 102

What are the advantages of HUAWEI CLOUD OCR service? (Multiple choice)

- A. Low cost of use
- B. High recognition efficiency
- C. High data security
- D. High recognition accuracy

Answer: A,B,C,D ([LEAVE A REPLY](#))

NEW QUESTION: 103

For data migration in scenarios where business cannot be interrupted, real-time data synchronization can be achieved through KafkaMirror or other dual-write solutions.

- A. False

B. True

Answer: ([SHOW ANSWER](#))

NEW QUESTION: 104

Which of the following options are the value that HUAWEI CLOUD big data containers bring to customers? (Multiple choice)

- A. Provide computing and storage separation solutions to facilitate customers to expand resources on demand
- B. Integration of computing and storage, seamless migration of customers to the cloud
- C. Provide dynamic expansion and contraction capabilities to improve the efficiency of big data calculations
- D. It is possible to deploy peak-shift business and big data tasks in a set of clusters to reduce costs
- E. Help containerized customers to unify their business and big data platforms

Answer: A,B,C,E ([LEAVE A REPLY](#))

NEW QUESTION: 105

The goal of smart park construction is to achieve full connectivity, full integration, and full intelligence in the park.

- A. True
- B. False

Answer: A ([LEAVE A REPLY](#))

NEW QUESTION: 106

What are the components that contain application construction and configuration information when publishing Docker-based container applications?

- A. Dockerfile
- B. Docker Hub
- C. Docker registry
- D. Docker image

Answer: A ([LEAVE A REPLY](#))

Valid H13-821_V2.0-ENU Dumps shared by PrepPdf.com for Helping Passing H13-821_V2.0-ENU Exam!
PrepPdf.com now offer the **newest H13-821_V2.0-ENU exam dumps**, the PrepPdf.com H13-821_V2.0-ENU exam **questions have been updated** and **answers have been corrected** get the **newest** PrepPdf.com H13-821_V2.0-ENU dumps with Test Engine here: https://www.preppdf.com/Huawei/H13-821_V2.0-ENU-prepaway-exam-dumps.html **(653 Q&As Dumps, 40%OFF Special Discount: Exam-Tests)**

NEW QUESTION: 107

Huawei Cloud tenants can manage third-party virtualization systems such as VMware based on the HCS Online solution heterogeneously.

- A. False
- B. True

Answer: B ([LEAVE A REPLY](#))

NEW QUESTION: 108

UML provides architects with a drawing specification that accurately describes the architecture of a system with a single graph.

- A. False
- B. True

Answer: A ([LEAVE A REPLY](#))

NEW QUESTION: 109

Which of the following scenarios are applicable to the Huawei CCE Cloud Container Engine? (Multiple Choice)

- A. Scenarios for improving the efficiency of business launch
- B. Scenarios for reducing resource costs
- C. Scenarios where traditional IT architecture can stably support business
- D. Scenarios where business load fluctuates significantly

Answer: ([SHOW ANSWER](#))

NEW QUESTION: 110

Comparing self-built components with cloud services, cloud services are easier to use, reliable and maintenance-free.

- A. True
- B. False

Answer: A ([LEAVE A REPLY](#))

NEW QUESTION: 111

Which of the following are the application scenarios of Huawei CCE? (Multiple choice)

- A. DevOps continuous delivery
- B. Stateless container application
- C. Automated operation and maintenance and high availability
- D. Stateful container applications

Answer: ([SHOW ANSWER](#))

NEW QUESTION: 112

The main function of Anti-DDos service is intrusion prevention.

- A. False
- B. True

Answer: A ([LEAVE A REPLY](#))

NEW QUESTION: 113

When a HUAWEI CLOUD tenant creates an AS elastic scaling group, which of the following strategies does the AZ to which the ECS belongs supports? (Multiple choice)

- A. Specify AZ select priority under single Region

- B. All AZ select priority under single Region
- C. All AZ-uniform distribution under single Region
- D. Specify AZ-uniform distribution under single Region

Answer: A,B,C,D ([LEAVE A REPLY](#))

NEW QUESTION: 114

What are the types of object storage? (Multiple choice)

- A. Standard storage
- B. High frequency storage
- C. Backup storage
- D. Low frequency storage
- E. Archive storage

Answer: A,D,E ([LEAVE A REPLY](#))

NEW QUESTION: 115

DLI service can process unstructured data directly through SQL, such as voice, pictures, etc.

- A. True
- B. False

Answer: A ([LEAVE A REPLY](#))

NEW QUESTION: 116

Keeping the RDS for MySQL read-only instance specifications consistent with the master instance specifications is conducive to service availability.

- A. True
- B. False

Answer: B ([LEAVE A REPLY](#))

NEW QUESTION: 117

Which of the following components can provide real-time alarm capabilities for the ladder network streaming data processing engine?

- A. MapReduce
- B. Storm
- C. Flume
- D. Flink

Answer: ([SHOW ANSWER](#))

NEW QUESTION: 118

Which of the following services is not a required service for the full-stack exclusive solution?

- A. VPN
- B. EVS
- C. SDR

D. SMN

Answer: A ([LEAVE A REPLY](#))

NEW QUESTION: 119

SOA is used for the architectural design of enterprise internal business systems, and ESB is mainly used for business system interaction between enterprises.

A. False

B. True

Answer: ([SHOW ANSWER](#))

NEW QUESTION: 120

IFF (Intelligent EdgeFabric) intelligent edge platform can sink the core cloud services of HUAWEI CLOUD (such as AI service, big data service, integration service, etc.) to edge nodes. The positioning of the service is an extension of HUAWEI CLOUD services at the edge, complementary to HUAWEI CLOUD, and edge-cloud collaboration.

A. False

B. True

Answer: B ([LEAVE A REPLY](#))

NEW QUESTION: 121

The ELB instance supports the simultaneous provision of load balancing services for multiple applications.

A. True

B. False

Answer: ([SHOW ANSWER](#))

Valid H13-821_V2.0-ENU Dumps shared by PrepPdf.com for Helping Passing H13-821_V2.0-ENU Exam!
PrepPdf.com now offer the **newest H13-821_V2.0-ENU exam dumps**, the PrepPdf.com H13-821_V2.0-ENU exam **questions have been updated** and **answers have been corrected** get the **newest** PrepPdf.com H13-821_V2.0-ENU dumps with Test Engine here: https://www.preppdf.com/Huawei/H13-821_V2.0-ENU-prepaway-exam-dumps.html **(653 Q&As Dumps, 40%OFF Special Discount: Exam-Tests)**

NEW QUESTION: 122

After the audit log is turned on, user information, execution time, and execution commands will be recorded, which can effectively improve database security.

A. True

B. False

Answer: A ([LEAVE A REPLY](#))

NEW QUESTION: 123

Which of the following are the main functions of ESB (Enterprise Service Bus)? (Multiple Choice)

- A. Message and event query and sorting
- B. Support data conversion and mapping
- C. Authentication and authorization of service communication
- D. Monitor and route messages between various services
- E. Solve communication failures between various service components

Answer: ([SHOW ANSWER](#))

NEW QUESTION: 124

What are the focus of cloud on the banking system? (Multiple choice)

- A. Reliable
- B. Professional services
- C. Compliance
- D. Security

Answer: ([SHOW ANSWER](#))

NEW QUESTION: 125

Blockchain is a versatile technology that can replace databases and the Internet. Huawei Blockchain Service (BCS) is a high-performance, high-availability and high-security blockchain technology platform service for enterprises and developers. It is suitable for scenarios such as data transactions, identity authentication, new energy, Internet of Vehicles, and supply chain traceability.

- A. True
- B. False

Answer: ([SHOW ANSWER](#))

NEW QUESTION: 126

Which of the following types of protocols does HUAWEI CLOUD ELB four-layer load balancing instance support? (Multiple choice)

- A. HTTPS
- B. TCP
- C. HTTP
- D. UDP

Answer: B,D ([LEAVE A REPLY](#))

NEW QUESTION: 127

UML class diagram deployment shows the dynamic relationship between classes.

- A. False
- B. True

Answer: B ([LEAVE A REPLY](#))

NEW QUESTION: 128

DevOps refers to the provision of a series of tool chains to achieve automated continuous delivery.

A. False

B. True

Answer: B ([LEAVE A REPLY](#))

NEW QUESTION: 129

HUAWEI CLOUD application performance management service uses bytecode enhancement technology to achieve non-intrusive collection of user application performance index data. The user deploys an application developed in C language on HUAWEI CLOUD, or can use HUAWEI CLOUD application performance management service to Analyze its performance problems.

A. True

B. False

Answer: ([SHOW ANSWER](#))

NEW QUESTION: 130

In the IOT industry, the amount of data transmitted by the device is very small, and there are fixed time intervals for the shore. In this case, the utilization of the CPU is very low. In order to save capital, which solution of Huawei Paas can be used?

A. Application microservices solution

B. Capability Opening API Gateway

C. Serverless function computing platform

D. Apply SaaS transformation plan

Answer: ([SHOW ANSWER](#))

NEW QUESTION: 131

According to the division of personnel functions, what roles does DAYU user have? (Multiple choice)

A. Manager

B. Visitors

C. Developer

D. Creator

E. Operator

Answer: A,B,C,E ([LEAVE A REPLY](#))

NEW QUESTION: 132

In order to support the database of millions of online game servers, it is recommended that tenants purchase s6/4U8G elastic cloud server instances to host mysql database applications.

A. True

B. False

Answer: ([SHOW ANSWER](#))

NEW QUESTION: 133

CCE applicable scenarios include? (Multiple choice)

- A. Scenarios where business load fluctuates significantly
- B. Scenarios to improve the efficiency of business launch
- C. Scenarios for the gradual transformation of traditional IT architecture
- D. Scenarios for reducing resource costs

Answer: A,B,C,D (LEAVE A REPLY)

NEW QUESTION: 134

Which of the following options is the main function of VPC ENDPOINT?

- A. Able to provide SNAT and DNAT functions for the elastic cloud server in the VPC
- B. Automatically distribute access traffic to multiple cloud servers, expand the external service capabilities of the application system, and achieve a higher level of application fault tolerance
- C. The isolated and private virtual network environment requested on HUAWEI CLOUD, cloud network basic services, can carry subnet information.
- D. Connect the VPC to the terminal node service (cloud service, user private service) privately, so that cloud resources in the VPC can access the terminal node service without an elastic public IP

Answer: D (LEAVE A REPLY)

NEW QUESTION: 135

What are the benefits of the microservices architecture? (Multiple choice)

- A. Simple operation and maintenance: stateless, self-service operation and maintenance make the system do not need a mature operation and maintenance team (mechanism). Significant cost savings
- B. The boundaries of the service module are clearer: Microservices emphasize modular structure (REST interface calls), which is very important for large teams.
- C. Allow for technical diversity: With microservices, you can mix multiple programming languages, development frameworks and data storage technologies.
- D. Support independent deployment: Simple services are easier to deploy, because the service is autonomous, and it will not cause a system crash after a problem occurs.

Answer: (SHOW ANSWER)

NEW QUESTION: 136

Under the trend of the industry's digital revolution, what are the five key challenges facing the "smart Internet of Things" network edge green? (Multiple choice)

- A. Massive and heterogeneous connections
- B. Data optimization
- C. Business real-time
- D. Application intelligence
- E. Security and privacy

Answer: A,B,C,D,E (LEAVE A REPLY)

Valid H13-821_V2.0-ENU Dumps shared by PrepPdf.com for Helping Passing H13-821_V2.0-ENU Exam!
PrepPdf.com now offer the **newest H13-821_V2.0-ENU exam dumps**, the PrepPdf.com H13-821_V2.0-ENU exam **questions have been updated** and **answers have been corrected** get the **newest** PrepPdf.com H13-821_V2.0-ENU dumps with Test Engine here: https://www.preppdf.com/Huawei/H13-821_V2.0-ENU-prepaway-exam-dumps.html (653 Q&As Dumps, **40%OFF Special Discount: Exam-Tests**)

NEW QUESTION: 137

Which of the following disaster recovery solutions does RDS for MySQL support? (Multiple choice)

- A. Same as AZ active/standby architecture
- B. Cross-AZ active/standby architecture
- C. Cross-AZ three-node architecture (financial version)
- D. Cross-Region Disaster Recovery

Answer: A,B,C,D (LEAVE A REPLY)

NEW QUESTION: 138

Tenants can complete data archiving based on the HUAWEI CLOUD object storage service.

- A. False
- B. True

Answer: B (LEAVE A REPLY)

NEW QUESTION: 139

Which one of the end-side devices currently supported by the HiLens platform is not included?

- A. Non-Hisilicon chip camera
- B. All HiSilicon chip equipment
- C. Android devices
- D. HiLens Kit

Answer: A (LEAVE A REPLY)

NEW QUESTION: 140

Which of the following types of protocols does the listener of the ELB instance support? (Multiple choice)

- A. HTTP/HITPS
- B. UDP
- C. ICMP
- D. TCP

Answer: A,B,D (LEAVE A REPLY)

NEW QUESTION: 141

In the Internet of Vehicles scenario, Kafka provides parallel access capabilities for large-scale data, but also provides peak shaving capabilities for the back-end real-time computing framework during the morning and evening peak periods.

- A. False

B. True

Answer: B ([LEAVE A REPLY](#))

NEW QUESTION: 142

Assuming that a VMware virtual machine allocates 100GB of space, 40GB of space is used during the initial backup, and the subsequent daily new data is 5GB.

When using CBR for backup, which of the following options is the amount of data for the first full backup and subsequent incremental backups?

A. 100GB, 100GB

B. 100GB, 5GB

C. 40GB, 100GB

D. 40GB, 5GB

Answer: D ([LEAVE A REPLY](#))

NEW QUESTION: 143

ServiceStage is a one-stop full-stack cloud-native application development and management platform. Which of the following advantages of ServiceStage can support the creation of the strongest cloud-native PaaS service? (Multiple choice)

A. APM/AOM: Full link, real-time monitoring of AIOps

B. Development pipeline: help companies quickly build application Alpha, Beta, Gamma, and production environments

C. Container: The strongest AI container platform, a complete hybrid cloud/multi-cloud solution (cluster federation), K8s open source community leader

D. Microservices: Service-oriented architecture, agile DevOps

Answer: ([SHOW ANSWER](#))

NEW QUESTION: 144

Huawei CSE supports multilingual microservice access and interoperability. Which of the following options are development languages supported by Huawei CSE? (Multiple choice)

A. PHP

B. Node.js

C. Java

D. .NET

E. Go

Answer: ([SHOW ANSWER](#))

NEW QUESTION: 145

Which of the following options is the classification of cloud on the enterprise IT? (Multiple choice)

A. Data collaboration

B. Business applications

C. Platform system

D. Infrastructure

Answer: A,B,C,D ([LEAVE A REPLY](#))

NEW QUESTION: 146

If tenants need to deploy core applications on HUAWEI CLOUD, this application needs to use highly isolated resources. Which of the following services are recommended for tenants? (Multiple choice)

- A. DCC exclusive computing service
- B. ECS Elastic Cloud Server
- C. DSS exclusive distributed storage service
- D. EVS cloud hard disk service

Answer: A,C ([LEAVE A REPLY](#))

NEW QUESTION: 147

Which of the following methods is used by HUAWEI CLOUD cc instances to ensure the security of tenant container instance isolation?

- A. Provide CGroup to isolate tenants
- B. Tenant isolation by docking enterprise projects
- C. Tenant isolation through physical machines or clusters
- D. Provide strong isolation through secure container technology Kata

Answer: D ([LEAVE A REPLY](#))

NEW QUESTION: 148

An ECS virtual machine can only run one container.

- A. False
- B. True

Answer: ([SHOW ANSWER](#))

NEW QUESTION: 149

Regarding the FunctionGraph function service, which of the following statements is correct?

- A. Cannot access the public network in the function
- B. Cannot access resources in the Huawei Cloud tenant vpc in the function
- C. The database on HUAWEI CLOUD cannot be accessed through functions
- D. After configuring the VPC in the function, you can access the resources under the corresponding VPC of the current user

Answer: D ([LEAVE A REPLY](#))

NEW QUESTION: 150

Which of the following options is not a commonly used communication network for IoT devices?

- A. NB-IoT
- B. Lora
- C. 2/3/4G
- D. HTTP

Answer: D (LEAVE A REPLY)

NEW QUESTION: 151

The goal of HUAWEI CLOUD's three-dimensional operation and maintenance is to control the operating status of the system in an all-round way and quickly respond to various problems. Which of the following are specifically reflected? (Multiple choice)

- A. Measure and analyze the end-to-end experience of users
- B. Only pay attention to the running status of the PaaS layer application
- C. Grasp the running status of the applications deployed on PaaS, and support the tracking of faults and performance issues
- D. Monitoring the IaaS layer

Answer: (SHOW ANSWER)

Valid H13-821_V2.0-ENU Dumps shared by PrepPdf.com for Helping Passing H13-821_V2.0-ENU Exam!
PrepPdf.com now offer the **newest H13-821_V2.0-ENU exam dumps**, the PrepPdf.com H13-821_V2.0-ENU exam **questions have been updated** and **answers have been corrected** get the **newest** PrepPdf.com H13-821_V2.0-ENU dumps with Test Engine here: https://www.preppdf.com/Huawei/H13-821_V2.0-ENU-prepaway-exam-dumps.html (653 Q&As Dumps, **40%OFF Special Discount: Exam-Tests**)

NEW QUESTION: 152

Which of the following options will help enterprises build a high-availability and disaster-tolerant design for the HCS Online hybrid cloud application layer? (Multiple choice)

- A. Use G5LB to achieve load balancing of traffic between HCS Online and HUAWEI CLOUD
- B. Complete the disaster recovery protection of the business host through the 12CDP of the British side
- C. Complete RDS relational database rapid redundancy from HCS Online to HUAWEI CLOUD through DRS
- D. Complete the batch copy of the business host from HCS Online to the public cloud host by hitting and copying the entire column

Answer: A,B,C,D (LEAVE A REPLY)

NEW QUESTION: 153

The DAYU standard design module only provides dimensional modeling as a data modeling method.

- A. True
- B. False

Answer: B (LEAVE A REPLY)

NEW QUESTION: 154

What are the advantages of the recommendation system solution based on the knowledge graph compared with the traditional recommendation system solution? (Multiple choice)

- A. There is no cold start problem

- B. There is no data sparsity problem
 - C. Recommendations are based on the semantic relationship between knowledge, and the recommendation results are interpretable
 - D. Can make recommendations based on historical user data
- Answer: A,B,C ([LEAVE A REPLY](#))**

NEW QUESTION: 155

The following statements about SOA and ESB, which does not fight for?

- A. ESB has both commercial and enterprise research.
- B. SPA services can be developed in different languages
- C. ESB is an enterprise-level implementation of the SOA concept
- D. When using ESB to connect web-based services and external non-web services within the enterprise, you need to redevelop web services into non-web services.

Answer: D ([LEAVE A REPLY](#))

NEW QUESTION: 156

The Intelligent Data Lake Operation Platform (DAYU) can help enterprises cope with the challenges of data management, and provide data lifecycle management in response to the demands of enterprise digital operations.

- A. False
- B. True

Answer: ([SHOW ANSWER](#))

NEW QUESTION: 157

Which of the following options is not a way to improve the e-commerce user experience?

- A. Store static files in the HUAWEI CLOUD OBS bucket, and achieve static page acceleration by supporting HUAWEI CLOUD CDN through OBS Connect
- B. Cache static product images in ELB to reduce the pressure on the web and improve user experience
- C. Configure CDN to achieve static page acceleration
- D. Use site content to separate dynamic and static to achieve a smooth site experience

Answer: B ([LEAVE A REPLY](#))

NEW QUESTION: 158

A table with 1 billion data records is running in the tenant's RDS instance. The delay time is long when executing SELECT related query statements. The tenant hopes to solve the problem of slow query performance through DDM. What kind of table is selected and recommended to be created on DDM by the tenant?

- A. Global table
- B. Aggregate table
- C. Fragmentation table
- D. Single table

Answer: ([SHOW ANSWER](#))

NEW QUESTION: 159

Huawei Cloud is the only founding member of the Cloud Native Foundation (CNCF) in Asia and the first platinum member in China.

- A. True
- B. False

Answer: ([SHOW ANSWER](#))

NEW QUESTION: 160

UML state diagram shows the life cycle of a class.

- A. True
- B. False

Answer: ([SHOW ANSWER](#))

NEW QUESTION: 161

From the perspective of the cloud security shared responsibility model, which of the following is not the security responsibility of HUAWEI CLOUD?

- A. Connect with the security laws and regulations of the place where HUAWEI CLOUD operates
- B. HUAWEI CLOUD's infrastructure security
- C. Operational security of HUAWEI CLOUD services
- D. Tenant security group and security policy configuration management

Answer: D ([LEAVE A REPLY](#))

NEW QUESTION: 162

What technology is used for pyrotechnic detection?

- A. Visual learning

Answer: A ([LEAVE A REPLY](#))

NEW QUESTION: 163

Which of the following cache engines does the Huawei Cloud Distributed Cache DCS service contain? (Multiple choice)

- A. IMDG
- B. Redis
- C. Memcached
- D. MySQL

Answer: B,C ([LEAVE A REPLY](#))

NEW QUESTION: 164

The functions of the Huawei Microservice Engine CSE include microservice operation and maintenance lifecycle management.

- A. True
- B. False

Answer: B ([LEAVE A REPLY](#))

NEW QUESTION: 165

Regarding the description of the Dedicated Cloud Solutions solution, which of the following statements is wrong?

- A. Huawei unified maintenance increase, remote upgrade, and physical isolation of business data
- B. The location of the penalty is in the HUAWEI CLOUD computer room
- C. Customers can directly manage full-stack dedicated resources in the HUAWEI CLOUD console
- D. Contains two sub-solutions: source exclusive solution and full-stack exclusive solution

Answer: C (LEAVE A REPLY)

NEW QUESTION: 166

Before using the HUAWEI CLOUD Distributed Cache DCS service, which of the following factors need to be evaluated?
(Multiple choice)

- A. Data migration plan
- B. Data relational database table design
- C. Data size and concurrency requirements
- D. Data backup and persistence requirements

Answer: A,B,C,D (LEAVE A REPLY)

Valid H13-821_V2.0-ENU Dumps shared by PrepPdf.com for Helping Passing H13-821_V2.0-ENU Exam!
PrepPdf.com now offer the **newest H13-821_V2.0-ENU exam dumps**, the PrepPdf.com H13-821_V2.0-ENU exam **questions have been updated** and **answers have been corrected** get the **newest** PrepPdf.com H13-821_V2.0-ENU dumps with Test Engine here: https://www.preppdf.com/Huawei/H13-821_V2.0-ENU-prepaway-exam-dumps.html **(653 Q&As Dumps, 40%OFF Special Discount: Exam-Tests)**

NEW QUESTION: 167

When customers use CBR to back up local VMware virtual machines to the cloud, they can use the DES data express service to transfer the first full backup data offline.

- A. True
- B. False

Answer: A (LEAVE A REPLY)

NEW QUESTION: 168

Assume that a VMware virtual machine allocates 10GB of space, uses 40GB of space during the initial backup, and subsequently adds 5GB of daily data.

When using CBR for backup, which of the following options is the amount of data for the first full backup and subsequent incremental backups?

- A. 40GB ; 100GB
- B. 100GB ; 100GB
- C. 40GB ; 5GB

D. 100GB ; 5GB

Answer: C ([LEAVE A REPLY](#))

NEW QUESTION: 169

Data Lake Discovery Service (DLI) supports the integration of data across data sources. Which of the following services support DLI cross-source access analysis? (Multiple choice)

A. MRS Hbase

B. CloudTable table storage service

C. DWS data warehouse service

D. CSS Cloud Search Service

Answer: A,B,C,D ([LEAVE A REPLY](#))

NEW QUESTION: 170

HUAWEI CLOUD provides key management services and docks with multiple basic cloud services to provide convenient data encryption protection for tenants on the cloud.

Which of the following services does not support the direct use of secret key instances?

A. Relational Database Service (RDS)

B. NAT gateway

C. Cloud Disk Service (EVS)

D. Object Storage Service (OBS)

Answer: B ([LEAVE A REPLY](#))

NEW QUESTION: 171

What is the role of the edge cloud application integration ROMA platform in the enterprise hybrid cloud architecture? (Multiple choice)

A. CDR integration

B. Connect data and applications

C. The channel for data collection to the cloud

D. Enterprise cloud on-cloud service capability collaboration

Answer: B,C,D ([LEAVE A REPLY](#))

NEW QUESTION: 172

Docker's resource limit uses the Cgroup feature of Linux.

A. False

B. True

Answer: ([SHOW ANSWER](#))

NEW QUESTION: 173

Which of the following is a function of the Huawei Cloud Distributed Cache DCS service?

A. Asynchronous decoupling between modules

B. Key-Value data cache

- C. Mass transaction transactions
- D. Horizontal expansion of the database

Answer: B ([LEAVE A REPLY](#))

NEW QUESTION: 174

Which of the following are the uses of middleware?

- A. Support for ultra-large scale applications
- B. Hotspot data caching
- C. Support mass access
- D. Support massive data
- E. Module asynchronous decoupling

Answer: A,B,C,D,E ([LEAVE A REPLY](#))

NEW QUESTION: 175

On October 17, 2017, the container supplier Docker announced that it would expand the Docker platform to embrace container orchestration rivals, which means that it will gradually unify the container orchestration and resource management framework ecology.

- A. Swarm, Swarm
- B. Swarm, Kubernetes
- C. Kubernetes, Swarm
- D. Kubernetes, Kubernetes

Answer: D ([LEAVE A REPLY](#))

NEW QUESTION: 176

Which services are the internal capabilities of the enterprise open to the outside world through API? (Multiple choice)

- A. Weather data from the Meteorological Bureau
- B. Real-time and historical stock market information
- C. salesforce.com
- D. Google Map

Answer: A,B,D ([LEAVE A REPLY](#))

NEW QUESTION: 177

$0.3 < \text{Apdex} < 0.75$, user experience is?

- A. Unsure
- B. General
- C. Better
- D. Poor

Answer: ([SHOW ANSWER](#))

NEW QUESTION: 178

Which of the following features does HUAWEI CLOUD database security service not support?

- A. Dynamic data desensitization
- B. CC attack protection
- C. SQL injection defense
- D. Fine-grained account management and authority control

Answer: B (LEAVE A REPLY)

NEW QUESTION: 179

When an enterprise builds its own computer room, which of the following design aspects need to be considered? (Multiple choice)

- A. Application redundancy design and disaster recovery plan
- B. Monitoring and recovery methods for equipment and platforms
- C. The construction and high-availability design of the management platform itself
- D. Redundancy and high reliability of the underlying operating platform

Answer: A,B,C,D (LEAVE A REPLY)

NEW QUESTION: 180

Which of the following are the advantages of building industry solutions based on the HiLens platform? (Multiple choice)

- A. Short integration cycle
- B. Low cost
- C. Fast deployment
- D. Protection of privacy

Answer: A,B,C (LEAVE A REPLY)

NEW QUESTION: 181

Huawei Cloud tenants need to use VMs to deploy their application systems. This application system requires a highly secure isolation environment. Which type of cloud service is recommended for tenants to use?

- A. DeH
- B. Elastic Cloud Server ECS
- C. DeH
- D. Bare Metal Server BMS

Answer: A (LEAVE A REPLY)

Valid H13-821_V2.0-ENU Dumps shared by PrepPdf.com for Helping Passing H13-821_V2.0-ENU Exam!
PrepPdf.com now offer the **newest H13-821_V2.0-ENU exam dumps**, the PrepPdf.com H13-821_V2.0-ENU exam **questions have been updated** and **answers have been corrected** get the **newest** PrepPdf.com H13-821_V2.0-ENU dumps with Test Engine here: https://www.preppdf.com/Huawei/H13-821_V2.0-ENU-prepaway-exam-dumps.html **(653 Q&As Dumps, 40%OFF Special Discount: Exam-Tests)**

NEW QUESTION: 182

Which of the following security strategies does RDS have? (Multiple choice)

- A. Network isolation-security group
- B. Network isolation-VPC
- C. SSL encryption
- D. Disk encryption

Answer: A,B,C,D (LEAVE A REPLY)

NEW QUESTION: 183

Which of the following are the key features of the full-stack exclusive solution? (Multiple choice)

- A. Inherit the overall design and practice of Huawei Cloud Security, and provide customers with comprehensive and multi-dimensional security and privacy protection functions and services, covering all levels of infrastructure, platform, application, and data security.
- B. Heterogeneous management of third-party hardware and virtualization systems to build a hybrid cloud ecosystem
- C. Integrate architecture, operation and maintenance, upgrade, API and ecology with HUAWEI CLOUD
- D. Based on the intelligent operation and maintenance system of HUAWEI CLOUD centralized operation and maintenance, it provides second-level monitoring and warning and fault prediction, which provides the highest guarantee for the stability of customers' business, and reduces the difficulty of customer OPEX and operation and maintenance.

Answer: A,B,C,D (LEAVE A REPLY)

NEW QUESTION: 184

The full-stack exclusive and HUAWEI CLOUD share the account system. Users must use a HUAWEI CLOUD account to log in and manage the full-stack exclusive cluster.

- A. True
- B. False

Answer: B (LEAVE A REPLY)

NEW QUESTION: 185

Create an elastic scaling group on the ServiceStage application operation and maintenance interface. Which of the following is not an elastic scaling policy of the application instance?

- A. Cycle trigger
- B. Timing trigger
- C. Alarm trigger
- D. Manual trigger

Answer: D (LEAVE A REPLY)

NEW QUESTION: 186

Which places are the construction scope of the smart park? (Multiple choice)

- A. Industrial Park
- B. Chemical Park
- C. Office building
- D. Urban complex

E. Highway

F. Campus

Answer: A,B,C,D,F ([LEAVE A REPLY](#))

NEW QUESTION: 187

Which of the following components cannot use SQL for data analysis and query?

A. SparkSQL

B. Hive

C. HBare

D. Presto

Answer: C ([LEAVE A REPLY](#))

NEW QUESTION: 188

Tenants can complete data archiving based on Huawei Cloud Object Storage Service.

A. False

B. True

Answer: ([SHOW ANSWER](#))

NEW QUESTION: 189

kubelet is a management component located on the master node of the cluster.

A. True

B. False

Answer: B ([LEAVE A REPLY](#))

NEW QUESTION: 190

Which of the following options are the technical measures adopted by HUAWEI CLOUD platform infrastructure network security? (Multiple choice)

A. Border network intrusion detection and interception

B. Business plane division and isolation

C. Boundary DDoS abnormalities and large traffic cleaning

D. Security zone division and isolation

Answer: A,B,C,D ([LEAVE A REPLY](#))

NEW QUESTION: 191

Which of the following scenarios is GeminiDB is suitable for? (Multiple choice)

A. Data redundancy across AZ is required to ensure reliability

B. Need super write performance

C. Requires computing resources and storage resources to support independent expansion

D. Need to support data models such as documents, wide tables, data structures, time series, etc.

Answer: ([SHOW ANSWER](#))

NEW QUESTION: 192

A software developer specializing in small and micro financial systems has a large number of users, but because the current operating model is mainly based on selling licenses, it is necessary to allocate corresponding operation and maintenance personnel for customers scattered throughout the country. Which caused a lot of waste of operation and maintenance costs.

The company wants to change this business model, which solution can it adopt?

- A. Use cloud middleware to transform software architecture and improve efficiency
- B. Software SaaS
- C. Application microservices solution
- D. Use Serverless function computing platform

Answer: B ([LEAVE A REPLY](#))

NEW QUESTION: 193

Which of the following ways can tenants find the reason for the slow query of the RDS database? (Multiple choice)

- A. After discovering slow SQL, judge whether the SQL statement writing and execution plan need to be optimized
- B. Use cloud monitoring to determine which SQL statements caused the problem during the slow query response period
- C. Use the slow query log to determine which SQL statements caused the problem during the slow query response period
- D. Through cloud monitoring, it is judged that there is a problem of excessive network throughput during the period of slow query response

Answer: A,B,C,D ([LEAVE A REPLY](#))

NEW QUESTION: 194

HUAWEI CLOUD tenants use one DDM instance and one RDS instance respectively, and create a logic library, which contains 8 shards.

As the business grows, it is necessary to smoothly expand an RDS instance. After the expansion, how many shards are there on each RDS?

- A. 8
- B. 12
- C. 16
- D. 4

Answer: (SHOW ANSWER)

NEW QUESTION: 195

What are the product advantages of image search? (Multiple choice)

- A. Massive search
- B. Customizable
- C. Simple and efficient
- D. High search accuracy

Answer: A,B,C,D ([LEAVE A REPLY](#))

NEW QUESTION: 196

Which of the following descriptions about Kubernetes is wrong?

- A. Kubernetes cannot manage the life cycle of containers
- B. Kubernetes' self-healing mechanism makes the container cluster always run in the state expected by users
- C. Kubernetes is Google's open source container cluster management system, built on Docker technology
- D. Kubernetes provides cross-node service discovery and load balancing

Answer: ([SHOW ANSWER](#))

Valid H13-821_V2.0-ENU Dumps shared by PrepPdf.com for Helping Passing H13-821_V2.0-ENU Exam!
PrepPdf.com now offer the **newest H13-821_V2.0-ENU exam dumps**, the PrepPdf.com H13-821_V2.0-ENU exam **questions have been updated** and **answers have been corrected** get the **newest** PrepPdf.com H13-821_V2.0-ENU dumps with Test Engine here: https://www.preppdf.com/Huawei/H13-821_V2.0-ENU-prepaway-exam-dumps.html (**653** Q&As Dumps, **40%OFF Special Discount: Exam-Tests**)

NEW QUESTION: 197

Which of the following options is the key feature of HUAWEI CLOUD distributed messaging DMS service?

- A. Module asynchronous decoupling
- B. Mass transaction transactions
- C. Horizontal expansion of the database
- D. Key-Value data cache

Answer: A ([LEAVE A REPLY](#))

NEW QUESTION: 198

Which of the following is not the key value of Huawei Cloud's full-stack exclusive solution?

- A. Sharing ecology: sharing the ecology with Huawei Cloud, the same online and offline experience
- B. Exclusive compliance: The physical height can be audited to meet the security compliance requirements of customers' cloud business
- C. Simple operation and maintenance: customers and Huawei cloud layered operation and maintenance, Huawei provides platform management professional operation and maintenance services, reducing customer operation and maintenance costs
- D. Technology leadership: service capabilities are ahead of Huawei's public cloud
- E. Hybrid linkage: through cross-cloud linkage capabilities (network, storage, disaster recovery, business applications) to meet customer business hybrid deployment requirements

Answer: D ([LEAVE A REPLY](#))

NEW QUESTION: 199

The following is description of the characteristics of the microservice cloud application platform (Servicestage). Which is correct? (Multiple choice)

- A. Feature development is fast. Multi-language microservices framework compatible with mainstream open source communities

- B. Fault location is fast. Non-intrusive collection end-to-end health monitoring
- C. Resources are ready. Mixed arrangement of heterogeneous resources. Self-service application. Implementation of issuance
- D. The application is fast online. Graphical orchestration one-click deployment

Answer: A,B,C,D (LEAVE A REPLY)

NEW QUESTION: 200

Which of the following data disks does not provide a three-copy data protection mechanism?

- A. Ultra-high IO hard disk on the cloud
- B. High IO hard disk on the cloud
- C. Ordinary IO hard disk on the cloud
- D. RAID6 hard drive under the cloud

Answer: D (LEAVE A REPLY)

NEW QUESTION: 201

Which of the following options belong to the function of IoT device management? (Multiple choice)

- A. Equipment batch operation
- B. Remote diagnosis of equipment
- C. Equipment alarm management
- D. Report statistics
- E. Device OTA upgrade

Answer: A,B,C,D,E (LEAVE A REPLY)

NEW QUESTION: 202

Which of the following is not the advantage of Huawei Cloud CCE management?

- A. Second level quick start and stop
- B. Isolation by shared kernel fine-grained resources
- C. Using Hypervisor to achieve more efficient use of hardware resources
- D. Defining the delivery and deployment specifications for environmentally unrelated standards

Answer: C (LEAVE A REPLY)

NEW QUESTION: 203

The scope of microservices includes self-organizing teams, technical practices, processes and tools. The three complement each other, promote and develop each other.

- A. False
- B. True

Answer: (SHOW ANSWER)

NEW QUESTION: 204

Which of the following functions can be completed by the microservice cloud application platform (ServiceStage)? (Multiple Choice)

- A. Create an application that depends on computing resources
- B. View application indicators
- C. Use AOS templates to automate application orchestration
- D. Online visual upgrade application
- E. Container applications need to build a container management platform on Service Storage. For example, you need to build kubernetes to manage docker container applications.

Answer: A,B,C,D ([LEAVE A REPLY](#))

NEW QUESTION: 205

Which of the following options is Huawei's self-developed artificial intelligence chip?

- A. Kylin
- B. Barong
- C. Yiteng
- D. Kunpeng

Answer: C ([LEAVE A REPLY](#))

NEW QUESTION: 206

Regarding the description of security groups and network ACLs, which of the following statements is wrong?

- A. Security groups are mandatory features for ECS, and network ACLs are optional features
- B. The security group supports 3-tuple filtering, and the network ACL supports 5-tuple filtering
- C. ECS communication in the same subnet can use both security group protection and network ACL
- D. The security group provides ECS level protection, and the network ACL provides subnet level protection

Answer: ([SHOW ANSWER](#))

NEW QUESTION: 207

What are the advantages of DWS's new data warehouse program? (Multiple choice)

- A. Quick deployment, easy to use
- B. Distributed architecture, transparent data segmentation
- C. Compatible with standard SQL 2003, easy to develop and dock applications
- D. Rich ecology, compatible with a variety of BI products

Answer: ([SHOW ANSWER](#))

NEW QUESTION: 208

What challenges will the microservices architecture face?

- A. Distributed systems. High complexity
- B. Partitioned database architecture. Data consistency is difficult to guarantee
- C. Function involves multiple modules. It is not convenient to test
- D. The inevitable extension of the delivery cycle

Answer: A,B,C ([LEAVE A REPLY](#))

NEW QUESTION: 209

Using the Huawei Cloud FunctionGraph service, if the function is not called, no billing information will be generated.

- A. True
- B. False

Answer: ([SHOW ANSWER](#))

NEW QUESTION: 210

Which of the following ways does RDS not support the client to connect to the database instance in?

- A. Public IP
- B. Intranet IP
- C. Domain name
- D. Host name

Answer: ([SHOW ANSWER](#))

NEW QUESTION: 211

If you develop a microservice based on the CSE Java SDK from scratch, which method is recommended to create a microservice?

- A. Construction management
- B. Pipeline
- C. Cloud Engineering
- D. Local engineering

Answer: ([SHOW ANSWER](#))

Valid H13-821_V2.0-ENU Dumps shared by PrepPdf.com for Helping Passing H13-821_V2.0-ENU Exam!
PrepPdf.com now offer the **newest H13-821_V2.0-ENU exam dumps**, the PrepPdf.com H13-821_V2.0-ENU exam **questions have been updated** and **answers have been corrected** get the **newest** PrepPdf.com H13-821_V2.0-ENU dumps with Test Engine here: https://www.preppdf.com/Huawei/H13-821_V2.0-ENU-prepaway-exam-dumps.html (**653** Q&As Dumps, **40%OFF Special Discount: Exam-Tests**)

NEW QUESTION: 212

Microservices under the microservices architecture naturally support DevOps, and microservices complement DevOps. DevOps requires the development, testing and operation of business components by a two pizzas team, rapid iteration, and continuous delivery.

- A. True
- B. False

Answer: A ([LEAVE A REPLY](#))

NEW QUESTION: 213

Which of the following options can realize the backup data of the offline VMware virtualization environment to the cloud?

- A. Cloud hard disk service EVS

- B. Dedicated distributed storage service DSS
- C. Cloud server backup CSBS
- D. Cloud backup service CBR

Answer: ([SHOW ANSWER](#))

NEW QUESTION: 214

As the bandwidth of network IO continues to increase, single-core CPUs have bottlenecks in processing network interrupts, which cannot fully meet the needs of network cards. By enabling the multi-queue function of network cards, tenants can distribute the network card interrupts in the elastic cloud server to different CPU for processing. In order to meet the needs of the network card, thereby improving the network PPS and bandwidth performance.

- A. False
- B. True

Answer: ([SHOW ANSWER](#))

NEW QUESTION: 215

DevOps rise has many driver factors; which aspects of the drivers does cloud computing belong to?

- A. Technical basis
- B. Business requirements
- C. Engineering foundation
- D. Capacity requirements

Answer: ([SHOW ANSWER](#))

NEW QUESTION: 216

The deployment form of image recognition services in industrial quality inspection scenarios can support edge deployment solutions.

- A. True
- B. False

Answer: A ([LEAVE A REPLY](#))

NEW QUESTION: 217

Which of the following components cannot use SQL for data analysis and query?

- A. SparkSQL
- B. Hive
- C. Hbase
- D. Presto

Answer: C ([LEAVE A REPLY](#))

questions have been updated and answers have been corrected get the **newest** PrepPdf.com H13-821_V2.0-ENU dumps with Test Engine here: https://www.preppdf.com/Huawei/H13-821_V2.0-ENU-prepaway-exam-dumps.html (**653** Q&As Dumps, **40%OFF** Special Discount: **Exam-Tests**)