

# Microsoft.AZ-800.v2023-04-17.q57

<b>Exam Code:</b>	AZ-800
<b>Exam Name:</b>	Administering Windows Server Hybrid Core Infrastructure
<b>Certification Provider:</b>	Microsoft
<b>Free Question Number:</b>	57
<b>Version:</b>	v2023-04-17
<b># of views:</b>	741
<b># of Questions views:</b>	570
<a href="https://www.freeqas.com/qa/Microsoft/AZ-800/Microsoft.AZ-800.v2023-04-17.q57.html">https://www.freeqas.com/qa/Microsoft/AZ-800/Microsoft.AZ-800.v2023-04-17.q57.html</a>	

## NEW QUESTION: 1

Your network contains an Active Directory Domain Services (AD DS) domain named adatum.com.

The image contains two screenshots from Windows Server. The top screenshot is titled "Permissions for Share1" and shows the "Share Permissions" tab. Under "Group or usernames", "Domain Users (ADATUM\Domain Users)" is selected. Below, the "Permissions for Domain Users" table shows "Full control" with the "Allow" checkbox checked. The bottom screenshot is titled "Advanced Security Settings for File1.txt" and shows the "Permissions" tab. It lists the following permission entries:

Permissions	Share	Auditing	Effective Access
Allow	Full control		
Allow	Domain Admins (ADATUM\Domain Admins)		Full control
Allow	User1 (User1@Adatum.com)		Full control
Allow	User2 (User2@Adatum.com)		Read
Allow	User3 (User3@Adatum.com)		Write

The domain contains a server named Server1 and three users named User1, User2 and User3. Server1 contains a shared folder named Share1 that has the following configurations:

```

ShareState           : Online
AvailabilityType     : NonClustered
FolderEnumerationMode : AccessBased
CachingMode          : Manual
LeasingMode           : Full
SmbInstance          : Default
CompressData          : False
ContinuouslyAvailable : False
EncryptData           : False
Name                  : Share1
Path                  : E:\Share1
ShadowCopy            : False
  
```

The share permissions for Share1 are configured as shown in the Share Permissions exhibit. (Click the Share Permissions tab.) Share1 contains a file named File1.txt. The advanced security settings for File1.txt are configured as shown in the File Permissions exhibit. (Click the File Permissions tab.) For each of the following statements, select Yes if the statement is true. Otherwise, select No.

NOTE: Each correct selection is worth one point.

Answer Area

Statements	Yes	No
When User1 connects to \\Server1.adatum.com\Share1, the user can take ownership of File1.txt.	<input type="radio"/>	<input type="radio"/>
When User2 connects to \\Server1.adatum.com\Share1, File1.txt is visible.	<input type="radio"/>	<input type="radio"/>
When User3 connects to \\Server1.adatum.com\Share1, File1.txt is visible.	<input type="radio"/>	<input type="radio"/>

Answer:

Answer Area

Statements	Yes	No
When User1 connects to \\Server1.adatum.com\Share1, the user can take ownership of File1.txt.	<input type="radio"/>	<input checked="" type="radio"/>
When User2 connects to \\Server1.adatum.com\Share1, File1.txt is visible.	<input checked="" type="radio"/>	<input type="radio"/>
When User3 connects to \\Server1.adatum.com\Share1, File1.txt is visible.	<input type="radio"/>	<input checked="" type="radio"/>

## NEW QUESTION: 2

Your network contains a two-domain on-premises Active Directory Domain Services (AD DS) forest named Contoso.com. The forest contains the domain controllers shown in the following table.

Name	Description	Domain	Active Directory site
DC1	Forest-wide and domain-wide FSMO role holder	contoso.com	Hub
DC2	Domain-wide FSMO role holder	child.contoso.com	Site1
RODC3	Read-only domain controller (RODC)	contoso.com	Site2

You create an Active Directory site named Site3. Site1, Site2 and Site3 each has a dedicated site link to the Hub site.

In Site3, you install a new server named Server1.

You need to promote Server1 to an ROOC in child.contoso.com by using the install from Media (IFM) option. The solution must minimize network traffic.

What should you do? To answer select the appropriate options in the answer area.

NOTE: Each correct selection is worth one point.

Answer Area

Server to use to create the IFM source:

- DC1
- DC2
- Server1
- RODC3

Tool to use to create the IFM source:

- Azure Backup
- Dcdiag.exe
- Ntdsutil.exe
- Repadmin.exe
- Windows Server Backup

**Answer:**

Answer Area

Server to use to create the IFM source:

- DC1
- DC2
- Server1
- RODC3

Tool to use to create the IFM source:

- Azure Backup
- Dcdiag.exe
- Ntdsutil.exe
- Repadmin.exe
- Windows Server Backup

### NEW QUESTION: 3

Note: This question is part of a series of questions that present the same scenario. Each question in the series contains a unique solution that might meet the stated goals. Some question sets might have more than one correct solution, while others might not have a correct solution.

After you answer a question in this section, you will NOT be able to return to it. As a result, these questions will not appear in the review screen.

Your network contains an Active Directory Domain Services (AD DS) forest. The forest contains three Active Directory sites named Site1, Site2, and Site3. Each site contains two domain controllers. The sites are connected by using DEFAULTIPSITELINK.

You open a new branch office that contains only client computers.

You need to ensure that the client computers in the new office are primarily authenticated by the domain controllers in Site1.

Solution: You create a new site named Site4 and associate Site4 to DEFAULTSITELINK.

Does this meet the goal?

**A. No**

B. Yes

Answer: ([SHOW ANSWER](#))

**NEW QUESTION: 4**

You have a file server named Server1 that runs Windows Server and contains the volumes shown in the following table.

Name	File system
C	NTFS
D	NTFS
E	REFS

On which volumes can you use BitLocker Drive Encryption (BitLocker) and disk quotas? To answer select the appropriate options in the answer area. NOTE Each correct selection is worth one point.

Answer Area

Microsoft

BitLocker:

- C only
- D only
- C and D only
- D and E only
- C, D, and E

Disk quotas:

- C only
- D only
- C and D only
- D and E only
- C, D, and E

Answer:

Answer Area

Microsoft

BitLocker:

- C only
- D only
- C and D only
- D and E only
- C, D, and E**

Disk quotas:

- C only
- D only
- C and D only**
- D and E only
- C, D, and E

Reference:

<https://docs.microsoft.com/en-us/windows-server/storage/refs/refs-overview>

**NEW QUESTION: 5**

Your network contains an Active Directory (AD DS) forest. The forest contains three domains. Each domain contains 10 domain controllers.

You plan to store a DNS zone in a custom active Directory partition.

You need to create the Active Directory partition for the zone. The partition replicate to only four of the domain controllers.

What should you use?

- A. Active Directory Sites and Services
- B. Active Directory Administrator Center
- C. DNS Manager
- D. dnscmd.exe

**Answer:** ([SHOW ANSWER](#))

**NEW QUESTION: 6**

Note: This question is part of a series of questions that present the same scenario. Each question in the series contains a unique solution that might meet the stated goals. Some question sets might have more than one correct solution, while others might not have a correct solution.

After you answer a question in this section, you will NOT be able to return to it. As a result, these questions will not appear in the review screen.

You are planning the deployment of DNS to a new network.

You have three internal DNS servers as shown in the following table.

Name	Location	IP address	Local DNS zone
Server1	Montreal	10.0.1.10	contoso.local
Server2	Toronto	10.0.2.10	east.contoso.local
Server3	Seattle	10.0.3.10	west.contoso.local

The contoso.local zone contains zone delegations for east.contoso.local and west.contoso.local. All the DNS servers use root hints.

You need to ensure that all the DNS servers can resolve the names of all the internal namespaces and internet hosts.

Solution: On Server2, you create a conditional forwarder for west.contoso.local. On Server3, you create a conditional forwarder for east.contoso.local.

Does this meet the goal?

- A. No
- B. Yes

**Answer:** A ([LEAVE A REPLY](#))

**NEW QUESTION: 7**

Note: This question is part of a series of questions that present the same scenario. Each question in the series contains a unique solution that might meet the stated goals. Some question sets might have more than one correct solution, while others might not have a correct solution.

After you answer a question in this section, you will NOT be able to return to it. As a result, these questions will not appear in the review screen.

You are planning the deployment of DNS to a new network.

You have three internal DNS servers as shown in the following table.

Name	Location	IP address	Local DNS zone
Server1	Montreal	10.0.1.10	contoso.local
Server2	Toronto	10.0.2.10	east.contoso.local
Server3	Seattle	10.0.3.10	west.contoso.local

The contoso.local zone contains zone delegations for east.contoso.local and west.contoso.local. All the DNS servers use root hints.

You need to ensure that all the DNS servers can resolve the names of all the internal namespaces and internet hosts.

Solution: On Server2, you create a conditional forwarder for contoso.local and west.contoso.local. On Server3, you create a conditional forwarder for contoso.local and east.contoso.local.

Does this meet the goal?

- A. Yes
- B. No

**Answer: A (LEAVE A REPLY)**

#### NEW QUESTION: 8

You have two servers that have the Hyper-V server role installed. The servers are joined to a failover cluster both servers can connect to the same disk on an iSCSI storage device. You plan to use the iSCSI storage to store highly available Hyper-V virtual machines that will support live migration functionality. You need to configure a storage resource in the failover cluster to store the virtual machines.

What should you configure?

- A. attributed File System (DFS) Replication
- B. a storage pool
- C. a mirrored volume
- D. Cluster Shared volumes (CSV)

**Answer: D (LEAVE A REPLY)**

#### NEW QUESTION: 9

Your network contains two VLANs for client computers and one VLAN for a datacenter. Each VLAN is assigned an IPv4 subnet. Currently, all the client computers use static IP addresses. You plan to deploy a DHCP server to the VLAN in the datacenter.

You need to use the DHCP server to provide IP configurations to all the client computers.

What is the minimum number of scopes and DHCP relays you should create? To answer, select the appropriate options in the answer area.

NOTE: Each correct selection is worth one point.

Answer Area



Microsoft

DHCP scopes:

1
2
3
4

DHCP relays:

1
2
3
4

the selections for DHCP relays:

Answer:

Answer Area

DHCP scopes:

1
2
3
4

DHCP relays:

1
2
3
4

the selections for DHCP relays:

**NEW QUESTION: 10**

You have a Windows Server container host named Server1 that has a single disk.

On Server1, you plan to start the containers shown in the following table.

Name	Description
Container1	Container1 is a Windows container that contains a web app in development. The container must <b>NOT</b> share a kernel with other containers.
Container2	Container2 is a Linux container that runs a web app. The container requires two static IP addresses.
Container3	Container3 is a Windows container that runs a database. The container requires a static IP address.

Which isolation mode can you use for each container? To answer, select the appropriate options in the answer area.

NOTE: Each correct selection is worth one point.

Container1:	<input type="checkbox"/> Hyper-V isolation only <input type="checkbox"/> Process isolation only <input type="checkbox"/> Hyper-V isolation or process isolation
Container2:	<input type="checkbox"/> Hyper-V isolation only <input type="checkbox"/> Process isolation only <input type="checkbox"/> Hyper-V isolation or process isolation
Container3:	<input type="checkbox"/> Hyper-V isolation only <input type="checkbox"/> Process isolation only <input type="checkbox"/> Hyper-V isolation or process isolation

**Answer:**

Container1:	<input type="checkbox"/> <b>Hyper-V isolation only</b> <input type="checkbox"/> Process isolation only <input type="checkbox"/> Hyper-V isolation or process isolation
Container2:	<input type="checkbox"/> Hyper-V isolation only <input type="checkbox"/> <b>Process isolation only</b> <input type="checkbox"/> Hyper-V isolation or process isolation
Container3:	<input type="checkbox"/> Hyper-V isolation only <input type="checkbox"/> Process isolation only <input type="checkbox"/> <b>Hyper-V isolation or process isolation</b>

Reference:

<https://docs.microsoft.com/en-us/virtualization/windowscontainers/manage-containers/hyperv-container>

**NEW QUESTION: 11**

You have an on premises Active Directory Domain Services (AD DS) domain that syncs with an Azure Active Directory (Azure AD) tenant. The domain contains two servers named Server1 and Server2.

A user named Admin1 is a member of the local Administrators group on Server1 and Server2. You plan to manage Server1 and Server2 by using Azure Arc. Azure Arc objects will be added to a resource group named RG1.

You need to ensure that Admin1 can configure Server1 and Server2 to be managed by using Azure Arc.

What should you do first?

- A. From the Azure portal, generate a new onboarding script.
- B. Assign Admin1 the Azure Connected Machine Onboarding role for RG1.
- C. Hybrid Azure AD join Server1 and Server2.
- D. Create an Azure cloud-only account for Admin1.

**Answer: B (LEAVE A REPLY)**

Reference:

<https://docs.microsoft.com/en-us/azure/azure-arc/servers/onboard-service-principal>

#### NEW QUESTION: 12

Your network contains an Active Directory Domain Services (AD DS) forest named contoso.com. The root domain contains the domain controllers shown in the following table.

Name	FSMO role
DC1	Domain naming master
DC2	RID master
DC3	PDC emulator
DC4	Schema master
DC5	Infrastructure master

A failure of which domain controller will prevent you from creating application partitions?

- A. DC1
- B. DC2
- C. DC3
- D. DC4
- E. DC5

**Answer: (SHOW ANSWER)**

Reference:

<https://docs.microsoft.com/en-us/troubleshoot/windows-server/identity/fsmo-roles>

#### NEW QUESTION: 13

Your network contains an Active Directory Domain Services (AD DS) domain named contoso.com. The domain contains the VPN servers shown in the following table.

Name	IP address
VPN1	172.16.0.254
VPN2	131.10.15.254
VPN3	10.10.0.254

You have a server named NPS1 that has Network Policy Server (NPS) installed. NPS1 has the following RADIUS clients:

```

Name : NPSclient1
Address : 172.16.0.254
AuthAttributeRequired : False
SharedSecret : Pa55w.rd
VendorName : RADIUS Standard
Enabled : False

Name : NPSclient2
Address : 131.10.15.254
AuthAttributeRequired : False
SharedSecret : Pa55w.rd
VendorName : RADIUS Standard
Enabled : True

Name : NPSclient3
Address : 172.16.1.254
AuthAttributeRequired : False
SharedSecret : Pa55w.rd
VendorName : RADIUS Standard
Enabled : True
  
```

VPN1, VPN2, and VPN3 use NPS1 for RADIUS authentication. All the users in contoso.com are allowed to establish VPN connections. For each of the following statements, select Yes if the statement is true. Otherwise, select No. NOTE: Each correct selection is worth one point.

Answer Area

Statements	Yes	No
The contoso.com users can authenticate successfully when they establish a VPN connection to VPN1.	<input type="radio"/>	<input type="radio"/>
The contoso.com users can authenticate successfully when they establish a VPN connection to VPN2.	<input type="radio"/>	<input type="radio"/>
The contoso.com users can authenticate successfully when they establish a VPN connection to VPN3.	<input type="radio"/>	<input type="radio"/>

Answer:

Answer Area

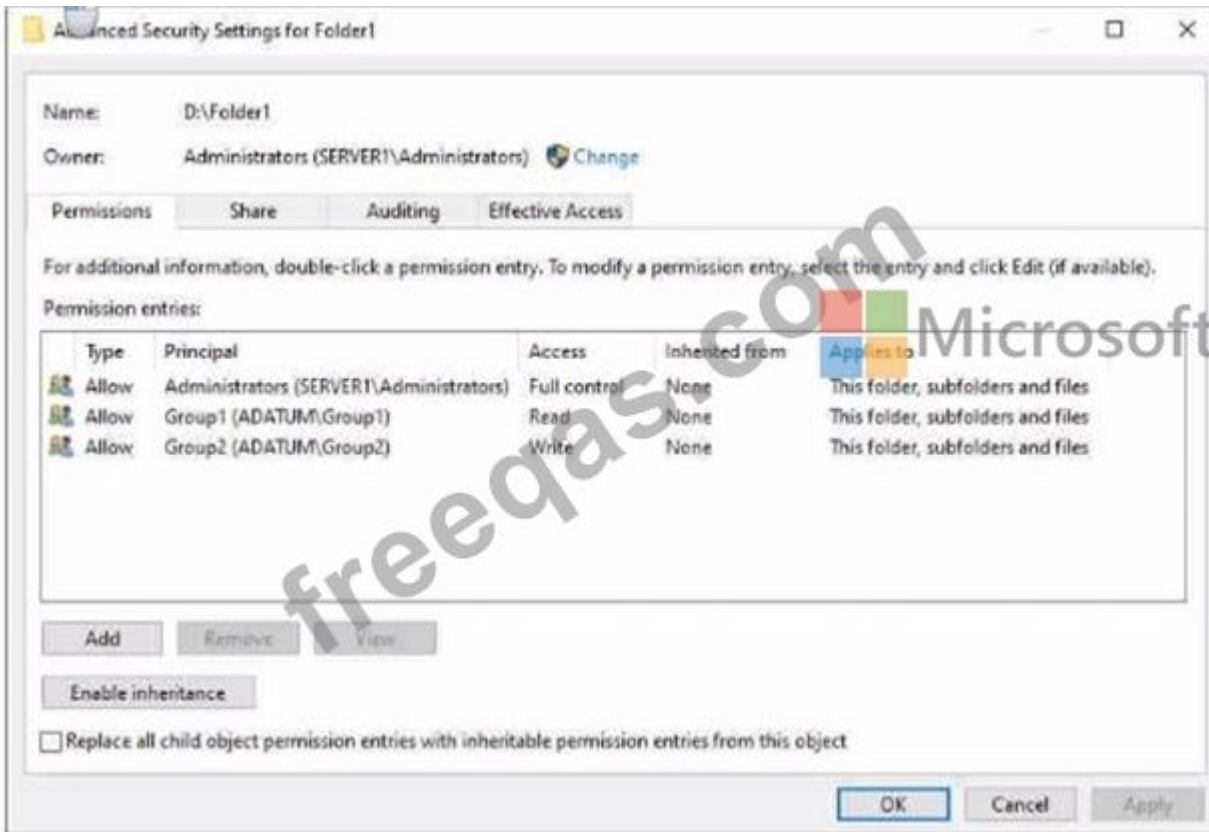
Statements	Yes	No
The contoso.com users can authenticate successfully when they establish a VPN connection to VPN1.	<input type="radio"/>	<input checked="" type="radio"/>
The contoso.com users can authenticate successfully when they establish a VPN connection to VPN2.	<input checked="" type="radio"/>	<input type="radio"/>
The contoso.com users can authenticate successfully when they establish a VPN connection to VPN3.	<input type="radio"/>	<input checked="" type="radio"/>

**NEW QUESTION: 14**

Your network contains an Active Directory Domain Services (AD DS) domain named adatum.com. The domain contains a server named Server1 and the users shown in the following table.

Name	Member of
User1	Group1
User2	Group2
User3	Group3

Server1 contains a folder named D:\Folder1. The advanced security settings for Folder 1 are configured as shown in the Permissions exhibit. (Click the Permissions tab.)



Folder1 is shared by using the following configurations

Group	Permission
Group1	Allow - Change
Group3	Allow - Full Control

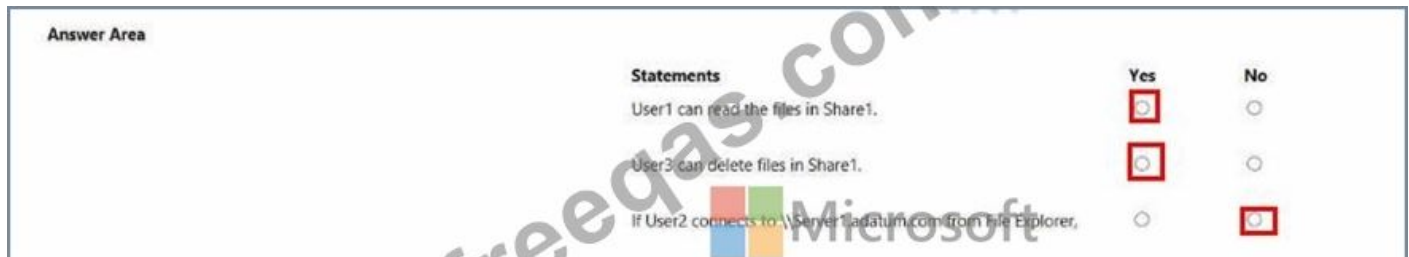
Path : D:\Folder1  
 Name : Share1  
 ShareType : FileSystemDirectory  
 FolderEnumerationMode : Unrestricted

Answer Area



Statements	Yes	No
User1 can read the files in Share1.	<input type="radio"/>	<input type="radio"/>
User3 can delete files in Share1.	<input type="radio"/>	<input type="radio"/>
If User2 connects to \\Server1.adatum.com from File Explorer,	<input type="radio"/>	<input type="radio"/>

Answer:



### NEW QUESTION: 15

You plan to deploy an Azure virtual machine that will run Windows Server. The virtual machine will host an Active Directory Domain Services (AD DS) domain controller and a drive named f: on a new virtual disk.

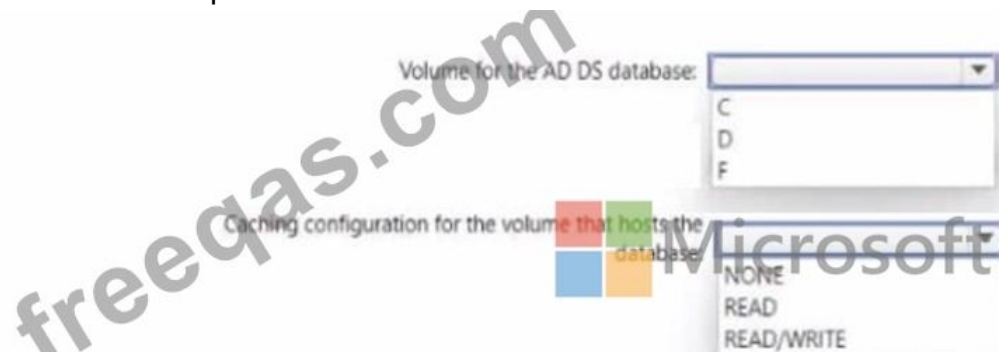
You need to configure storage for the virtual machine. The solution must meet the following requirements

- \* Maximize resiliency for AD DS.
- \* Prevent accidental data loss.

How should you configure the storage? To answer, select the appropriate options in the answer area.

NOTE: Each correct selection is worth one point.

Answer Area



Answer:

Answer Area



### NEW QUESTION: 16

Your network contains an Active Directory domain, a web app named App1, and a perimeter network. The perimeter network contains a server named Server1 that runs Windows Server. You plan to provide external access to App1.

You need to implement the Web Application Proxy role service on Server1.

Which role should you add to Server1, and which role should you add to the network? To answer, drag the appropriate roles to the correct targets. Each role may be used once, more than once, or not at all. You may need to drag the split bar between panes or scroll to view content.



Answer:



**Valid AZ-800 Dumps** shared by PrepPdf.com for Helping Passing AZ-800 Exam!  
PrepPdf.com now offer the **newest AZ-800 exam dumps**, the PrepPdf.com AZ-800 exam **questions have been updated** and **answers have been corrected** get the **newest** PrepPdf.com AZ-800 dumps with Test Engine here:  
<https://www.preppdf.com/Microsoft/AZ-800-prepaway-exam-dumps.html> (251 Q&As Dumps, **40%OFF Special Discount: Exam-Tests**)

#### NEW QUESTION: 17

You have an on-premises server named Server1 that runs Windows Server. You have an Azure virtual network that contains an Azure virtual network gateway. You need to connect only Server1 to the Azure virtual network. What should you use?

- A. Azure Network Adapter
- B. a Site-to-SiteVPN
- C. an ExpressRoute circuit
- D. Azure Extended Network

**Answer: D (LEAVE A REPLY)**

Reference:

<https://docs.microsoft.com/en-us/windows-server/manage/windows-admin-center/azure/use-azure-network-adapter>

#### NEW QUESTION: 18

Note: This question is part of a series of questions that present the same scenario. Each question in the series contains a unique solution that might meet the stated goals. Some question sets might have more than one correct solution, while others might not have a correct solution.

After you answer a question in this section, you will NOT be able to return to it. As a result, these questions will not appear in the review screen.

Your network contains an Active Directory Domain Services (AD DS) domain named contoso.com.

You need to identify which server is the PDC emulator for the domain.

Solution: From Active Directory Domains and Trusts, you right-click Active Directory Domains and Trusts in the console tree, and then select Operations Master.

Does this meet the goal?

- A. Yes


B. No

Answer: ([SHOW ANSWER](#))

**NEW QUESTION: 19**

Which three actions should you perform in sequence to meet the security requirements for Webapp1? To answer, move the appropriate actions from the list of actions to the answer area and arrange them in the correct order.

**Actions**

**Answer Area** 

- Create a standalone managed service account (sMSA) in AD DS.
- Configure the IIS application pool to run as Network Service.
- Configure the IIS application pool to run as a specified user account.
- Create a group managed service account (gMSA) in Active Directory.
- Create a system-assigned managed identity in Azure AD.
- Create a user-assigned managed identity in Azure AD.
- Create the Key Distribution Services (KDS) root key in AD DS.

**Answer:**

**Answer Area**

- Configure the IIS application pool to run as Network Service.
- Create a group managed service account (gMSA) in Active Directory.
- Create the Key Distribution Services (KDS) root key in AD DS.

1 - Configure the IIS application pool to run as Network Service.

2 - Create a group managed service account (gMSA) in Active Directory.

3 - Create the Key Distribution Services (KDS) root key in AD DS.

Topic 2, Contoso Ltd

To start the case study

To display the first question in this case study, click the Next button. Use the buttons in the left pane to explore the content of the case study before you answer the questions. Clicking these buttons displays information such as business requirements, existing environment, and problem statements, if the case study has an All Information tab. note that the information displayed is

identical to the information displayed on the subsequent tabs. When you are ready to answer a question, click the Question button to return to the question.

### AD DS Environment

The network contains an on-premises Active Directory Domain Services (AD DS) forest named contoso.com. The forest contains two domains named contoso.com and canada.contoso.com. The forest contains the domain controllers shown in the following table.

Name	Domain	Active Directory site
DC1	contoso.com	Seattle
DC2	contoso.com	Los Angeles
DC3	canada.contoso.com	Montreal
DC4	contoso.com	Montreal
DC5	canada.contoso.com	Seattle

All the domain controllers are global catalog servers.

### Server Infrastructure

The network contains the servers shown in the following table.

Name	Organizational unit (OU)	Server role	Domain	Active Directory site
Server1	Member Servers	None	canada.contoso.com	Montreal
Server2	Member Servers	Hyper-V	canada.contoso.com	Montreal
Server3	Member Servers	None	canada.contoso.com	Montreal

A server named Server4 runs Windows Server and is in a workgroup. Windows Firewall on Server4 uses the private profile.

Server2 hosts three virtual machines named VM1, VM2, and VM3.

VM3 is a file server that stores data in the volumes shown in the following table.

Name	File system
C	NTFS
D	NTFS
E	ReFS
F	ExFAT

### Group Policies

The contoso.com domain has the Group Policies Objects (GPOs) shown in the following table.

Name	Minimum password length	Linked to
GPO1	14	OU1
GPO2	8	Member Servers
Default Domain Policy	10	contoso.com

### Existing Identities

The forest contains the users shown in the following table.

Name	In OU	Member of
Contoso\Admin1	Contoso\OU1	Contoso\Enterprise Admins
Contoso\Admin2	Contoso\OU1	Contoso\Domain Admins
Canada\Admin3	Canada\OU2	Canada\Domain Admins
Contoso\User1	Contoso\OU3	Contoso\Domain Users

The forest contains the groups shown in the following table.

Name	Domain	Type
Group1	contoso.com	Universal security group
Group2	contoso.com	Global security group
Group3	contoso.com	Domain local security group
Group4	canada.contoso.com	Global distribution group
Group5	canada.contoso.com	Global distribution group
Group6	canada.contoso.com	Domain local distribution group

### Current Problems

When an administrator signs in to the console of VM2 by using Virtual Machine Connection, and then disconnects from the session without signing out another administrator can connect to the console session as the currently signed-in user.

### Requirements

Contoso identifies the following technical requirements:

- \* Change the replication schedule for all site links to 30 minutes.
- \* Promote Server1 to a domain controller in canada.contoso.com.
- \* Install and authorize Server3 as a DHCP server.
- \* Ensure that User1 can manage the membership of all the groups in Contoso\OU3.
- \* Ensure that you can manage Server4 from Server1 by using PowerShell removing.
- \* Ensure that you can run virtual machines on VM1.
- \* Force users to provide credentials when they connect to VM2.
- \* On VM3, ensure that Data Deduplication on all volumes is possible.

### NEW QUESTION: 20

You have a server named Server1 that runs Windows Server Server1 has a just-a-bunch-of-disks (JBOD) enclosure attached.

You plan to create a storage pool on Server1 and a virtual disk that will use a mirror layout.

You are considering whether to use a two-way or a three-way mirror layout.

What is the minimum number of disks required for each type of mirror layout? To answer, select the appropriate options in the answer area.

NOTE: Each correct selection is worth one point.



Answer:



**NEW QUESTION: 21**

You need to configure the Group Policy settings to ensure that the Azure Virtual Desktop session hosts meet the security requirements. What should you configure?

- A. security filtering for the link of GPO1
- B. security filtering for the link of GP04
- C. the Enforced property for the link of GP01
- D. loopback processing in GPO1
- E. the Enforced property for the link of GP04
- F. loopback processing in GPO4

Answer: F ([LEAVE A REPLY](#))

**NEW QUESTION: 22**

You have five tile servers that run Windows Server.

You need to block users from uploading video files that have the .mov extension to shared folders on the file servers. All other types of files must be allowed. The solution must minimize administrative effort.

What should you create?

- A. a Dynamic Access Control central access policy
- B. a file screen
- C. a Dynamic Access Control central access rule
- D. a data loss prevention (DLP) policy

**Answer:** ([SHOW ANSWER](#))

Reference:

<https://docs.microsoft.com/en-us/windows-server/storage/fsrm/file-screening-management>

### NEW QUESTION: 23

Your network contains an Active Directory Domain Services (AD DS) forest named contoso.com. The forest contains a child domain named east.contoso.com.

in the contoso.com domain, you create two users named Admin1 and Admin2.

You need to ensure that the users can perform the following tasks:

- \* Admin1 can create and manage Active Directory sites.
- \* Admin2 can deploy domain controller to the east.contoso.com domain.

The solution must use the principle of least privilege.

To which group should you add each user? To answer, select the appropriate options in the answer area.

NOTE Each correct selection is worth one point.

Answer Area

Microsoft

Admin1:

- Contoso\Administrators
- Contoso\Domain Admins

Admin2:

- Contoso\Enterprise Admins
- East\Administrators
- East\Domain Admins

Admin2:

- Contoso\Administrators
- Contoso\Domain Admins
- Contoso\Enterprise Admins
- East\Administrators
- East\Domain Admins

**Answer:**  
ANSWER AREA

Admin1:

- Contoso\Administrators
- Contoso\Domain Admins

Admin2:

- Contoso\Enterprise Admins
- East\Administrators
- East\Domain Admins

Admin2:

- Contoso\Administrators
- Contoso\Domain Admins
- Contoso\Enterprise Admins
- East\Administrators
- East\Domain Admins

Reference:

<https://docs.microsoft.com/en-us/windows-server/remote/remote-access/ras/multisite/configure/step-2-configure-the-multisite-infrastructure>

### NEW QUESTION: 24

What should you implement for the deployment of DC3?

- A. Azure Active Directory Domain Services (Azure AD DS)
- B. Azure AD Application Proxy
- C. an Azure virtual machine
- D. an Azure AD administrative unit

**Answer: C (LEAVE A REPLY)**

Create a domain controller named dc3.corp.fabrikam.com in Vnet1.

In a hybrid network, you can configure Azure virtual machines as domain controllers. The domain controllers in Azure communicate with the on-premises domain controllers in the same way that on-premises domain controllers communicate with each other.

### NEW QUESTION: 25

You have an on-premises Active Directory Domain Services (AD DS) domain that syncs with an Azure Active Directory (Azure AD) tenant. You have an on-premises web app named WebApp1 that only supports Kerberos authentication.

You need to ensure that users can access WebApp1 by using their Azure AD account. The solution must minimize administrative effort.

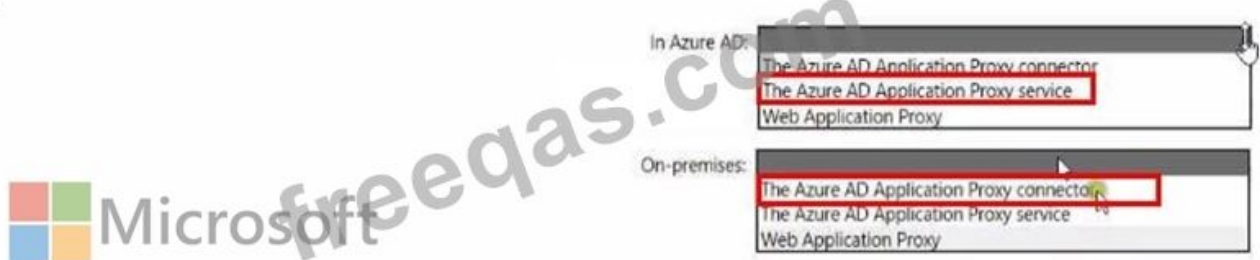
What should you configure? To answer, select the appropriate options in the answer area.

NOTE: Each correct selection is worth one point.



**Answer:**

Answer Area



Reference:

<https://docs.microsoft.com/en-us/azure/active-directory/app-proxy/application-proxy-add-on-premises-application>

**NEW QUESTION: 26**

You need to configure remote administration to meet the security requirements. What should you use?

- A. just in time (JIT) VM access
- B. Azure AD Privileged Identity Management (PIM)
- C. the Remote Desktop extension for Azure Cloud Services
- D. an Azure Bastion host

**Answer: A (LEAVE A REPLY)**

Reference:

<https://docs.microsoft.com/en-us/azure/defender-for-cloud/just-in-time-access-usage?tabs=jit-config-asc%2Cjit-request-asc>

**NEW QUESTION: 27**

You have two on-premises servers named Server1 and Servet2 that run Windows Server. You have an Azure Storage account named storage1 that contains a file share named share'. Server1 syncs with share1 by using Azure File Sync You need to configure Server2 to sync with share1.

Which three actions should you perform in sequence? To answer, move the appropriate actions from the list of actions to the answer area and arrange them in the correct order.

Actions

- Register Server2 with the Storage Sync Service.
- Add a Storage Sync Service to the Azure subscription.
- On Server2, install the Azure File Sync agent.
- Add a cloud endpoint to the sync group.
- Add a server endpoint to the sync group.

Answer Area

**Answer:**

**Answer Area**

- On Server2, install the Azure File Sync agent.
- Register Server2 with the Storage Sync Service.
- Add a server endpoint to the sync group.

- 1 - On Server2, install the Azure File Sync agent.
- 2 - Register Server2 with the Storage Sync Service.
- 3 - Add a server endpoint to the sync group.

**NEW QUESTION: 28**

Your network contains an Active Directory Domain Services (AD DS) domain named contoso.com. The domain contains a DNS server named Server1. Server1 hosts a DNS zone named fabrikam.com that was signed by DNSSEC.

You need to ensure that all the member servers in the domain perform DNSSEC validation for the fabrikam.com namespace.

What should you do?

- A. From a Group Policy Object (GPO), add a rule to the Name Resolution Policy Table (NRPT).
- B. On Server1, run the Add-DnsServerTrustAnchor cmdlet.
- C. From a Group Policy Object (GPO), modify the Network List Manager policies.
- D. On each member server, run the Add-DnsServerTrustAnchor cmdlet.

**Answer: A ([LEAVE A REPLY](#))**

### **NEW QUESTION: 29**

Your network contains an Active Directory Domain Service (AD DS) forest named contoso.com. The forest root domain contains a server named server1.contoso.com.

A two-way forest trust exists between the contoso.com forest and an AD DS forest named fabrikam.com. The fabrikam.com forest contains 10 child domains.

You need to ensure that only the members of a group named fabrikam\Group1 can authenticate to server1.contoso.com.

What should you do first?

- A. Enable Selective authentication for the trust.
- B. Change the trust to a one-way external trust.
- C. Enable SID filtering for the trust.
- D. Add fabrikam\Group1 to the local Users group on server1.contoso.com.

**Answer: ([SHOW ANSWER](#))**

### **NEW QUESTION: 30**

You have a server named Server1 that runs Windows Server.

You plan to host applications in Windows containers.

You need to configure Server1 to run containers. What should you install?

- A. Docker
- B. Windows Admin Center
- C. the Windows Subsystem for Linux
- D. Hyper-V

**Answer: ([SHOW ANSWER](#))**

### **NEW QUESTION: 31**

You deploy a new Active Directory Domain Services (AD DS) forest named contoso.com. The domain contains three domain controllers named DC1, DC2, and DC3.

You rename Default-First-Site-Name as Site1.

You plan to ship DC1, DC2, and DC3 to datacenters in different locations.

You need to configure replication between DC1, DC2, and DC3 to meet the following requirements:

Each domain controller must reside in its own Active Directory site.

The replication schedule between each site must be controlled independently.

Interruptions to replication must be minimized.

Which three actions should you perform in sequence in the Active Directory Sites and Services console? To answer, move the appropriate actions from the list of actions to the answer area and arrange them in the correct order.

**Actions**

Create a connection object between DC1 and DC2.

Create an additional site link that contains Site1 and Site2.

Create two additional sites named Site2 and Site3. Move DC2 to Site2 and DC3 to Site3.

Create a connection object between DC2 and DC3.

Remove Site2 from DEFAULTIPSITELINK.

**Answer Area**



**Answer:**

Answer Area
Create two additional sites named Site2 and Site3. Move DC2 to Site2 and DC3 to Site3.
Create a connection object between DC1 and DC2.
Create a connection object between DC2 and DC3.

- 1 - Create two additional sites named Site2 and Site3. Move DC2 to Site2 and DC3 to Site3.
- 2 - Create a connection object between DC1 and DC2.
- 3 - Create a connection object between DC2 and DC3.

**Valid AZ-800 Dumps** shared by PrepPdf.com for Helping Passing AZ-800 Exam!  
PrepPdf.com now offer the **newest AZ-800 exam dumps**, the PrepPdf.com AZ-800 exam **questions have been updated** and **answers have been corrected** get the **newest** PrepPdf.com AZ-800 dumps with Test Engine here:

<https://www.preppdf.com/Microsoft/AZ-800-prepaway-exam-dumps.html> (251 Q&As Dumps, 40%OFF Special Discount: **Exam-Tests**)

**NEW QUESTION: 32**

You need to meet the technical requirements for Server4.

Which cmdlets should you run on Server1 and Server4? To answer, select the appropriate options in the answer area.

NOTE: Each correct selection is worth one point.

Server1:

Enable-PSRemoting
Enable-ServerManagerStandardUserRemoting
Set-Item
Start-Service

Server4:

Enable-PSRemoting
Enable-ServerManagerStandardUserRemoting
Set-Item
Start-Service

**Answer:**

Server1:

Enable-PSRemoting
Enable-ServerManagerStandardUserRemoting
Set-Item
Start-Service

Server4:

Enable-PSRemoting
Enable-ServerManagerStandardUserRemoting
Set-Item
Start-Service

Reference:

<https://4sysops.com/wiki/enable-powershell-remoting/>

### NEW QUESTION: 33

You have on-premises file servers that run Windows Server as shown in the following table.

You have the Azure file shares shown in the following table.

You add a Storage Sync Service named Sync1 and an Azure File Sync sync group named Group1. Group1 uses share1 as a cloud endpoint.

You register Server1 and Server2 with Sync1. You add D:\Folder1 from Server1 as a server endpoint in Group1.

For each of the following statements, select Yes if the statement is true. Otherwise, select No.

NOTE: Each correct selection is worth one point.

Statements	Yes	No
You can add share2 as a cloud endpoint in Group1.	<input type="radio"/>	<input type="radio"/>
You can add E:\Folder2 from Server1 as a server endpoint in Group1.	<input type="radio"/>	<input type="radio"/>
You can add D:\Data from Server2 as a server endpoint in Group1.	<input type="radio"/>	<input type="radio"/>

Answer:

Statements	Yes	No
You can add share2 as a cloud endpoint in Group1.	<input type="radio"/>	<input checked="" type="radio"/>
You can add E:\Folder2 from Server1 as a server endpoint in Group1.	<input checked="" type="radio"/>	<input type="radio"/>
You can add D:\Data from Server2 as a server endpoint in Group1.	<input checked="" type="radio"/>	<input type="radio"/>

Reference:

<https://docs.microsoft.com/en-us/azure/storage/file-sync/file-sync-planning>

### NEW QUESTION: 34

Your network contains a single domain Active Directory Domain Services (AD DS) forest named contoso.com. The forest contains a single Active Directory site.

You plan to deploy a read only domain controller (RODC) to a new datacenter on a server named Server1. A user named User1 is a member of the local Administrators group on Server1.

You need to recommend a deployment plan that meets the following requirements:

Ensures that a user named User1 can perform the RODC installation on Server1  
 Ensures that you can control the AD DS replication schedule to the Server1  
 Ensures that Server1 is in a new site named RemoteSite1  
 Uses the principle of least privilege  
 Which three actions should you recommend performing in sequence? To answer, move the appropriate actions from the list of actions to the answer area and arrange them in the correct order.

ACTIONS	ANSWER AREA
Instruct User1 to run the Active Directory Domain Services installation Wizard on Server1.	
Create a site and a subnet.	
Create a site link.	
Pre-create an RODC account.	
Add User1 to the Contoso\Administrators group.	

**Answer:**



- 1 - Create a site and a subnet.
- 2 - Pre-create an RODC account.
- 3 - Instruct User1 to run the Acvite Directory Domain Services installation Wizard on Server1.

Reference:

<https://mehic.se/2018/01/02/how-to-install-and-configure-read-only-domain-controller-rod-2016/>

### NEW QUESTION: 35

You have an Azure virtual machine named VM1 that runs Windows Server. You perform the following actions on VM1:

- \* Create a folder named Folder1 on volume C
- \* Create a folder named Folder2 on volume D.
- \* Add a new data disk to VM1 and create a new volume that is assigned drive letter E.
- \* Install an app named App1 on volume E.

You plan to resize VM1.

Which objects will present after you resize VM1?

- A. Folder1 only
- B. Folder1, Folder2, App1, and volume E
- C. Folder1 and Folder2 only
- D. Folder1, volume E, and App1 only

**Answer: B** ([LEAVE A REPLY](#))

### NEW QUESTION: 36

Your network contains an on-premises Active Directory Domain Services (AD DS) domain named contoso.com. The domain contains three servers that run Windows Server and have the Hyper-V server role installed. Each server has a Switch Embedded Teaming (SET) team. You need to verify that Remote Direct Memory Access (RDMA) and all the required Windows Server settings are configured properly on each server.

What should you use?

- A. Server Manager
- B. the validate-DCB cmdlet
- C. the Get-NetAdaptor cmdlet
- D. Failover Cluster Manager

**Answer: (**[SHOW ANSWER](#)**)**

Reference:

<https://github.com/Microsoft/Validate-DCB>

**NEW QUESTION: 37**

For each of the following statements, select Yes if the statement is true. Otherwise, select No.

NOTE: Each correct selection is worth one point.

Statements	Yes	No
Admin1 must use a password that has at least 14 characters.	<input type="radio"/>	<input type="radio"/>
User1 must use a password that has at least 10 characters.	<input type="radio"/>	<input type="radio"/>
If Admin1 creates a new local user on Server1, the password for the new user must be at least eight characters.	<input type="radio"/>	<input type="radio"/>

**Answer:**

Statements	Yes	No
Admin1 must use a password that has at least 14 characters.	<input type="radio"/>	<input checked="" type="radio"/>
User1 must use a password that has at least 10 characters.	<input checked="" type="radio"/>	<input type="radio"/>
If Admin1 creates a new local user on Server1, the password for the new user must be at least eight characters.	<input type="radio"/>	<input checked="" type="radio"/>

**NEW QUESTION: 38**

You have an Azure virtual machine named Server1 that runs a network management application. Server1 has the following network configuration.

- \* Network interface.Nic1
- \* IP address 10.1.1.1/24
- \* Connected to: Vnet1/Subnet1

You need connect Server1 to an additional subnet named Vnet1/Subnet2.

What should you do?

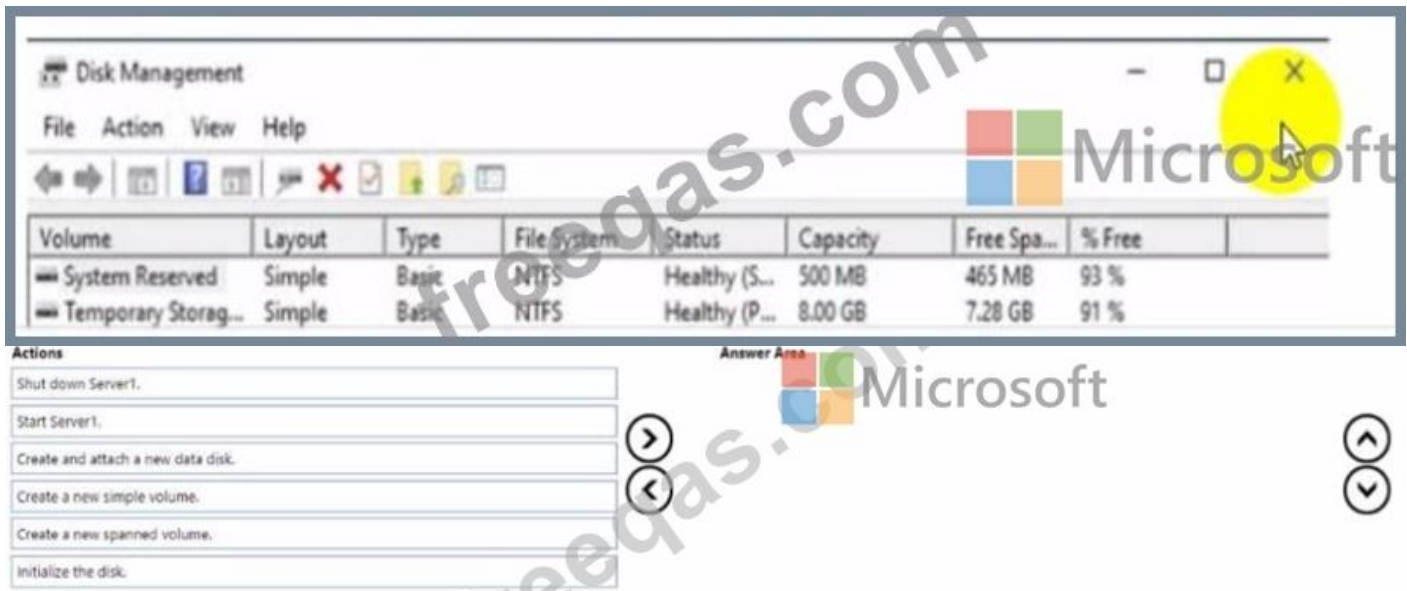
- A. Modify the IP configurations of Nic1.
- B. Add a network interface to server1.
- C. Add an IP configuration to Nic1.
- D. Create a private endpoint on Subnet2

**Answer: D (LEAVE A REPLY)**

**NEW QUESTION: 39**

You create an Azure virtual machine named Server1 that runs Windows Server.

Server1 has the disk configuration shown in the following exhibit.



**Answer:**

### Answer Area

Start Server1.

Create and attach a new data disk.

Shut down Server1.

- 1 - Start Server1.
- 2 - Create and attach a new data disk.
- 3 - Shut down Server1.

### NEW QUESTION: 40

Your network contains an Active Directory Domain Services (AD DS) domain named contoso.com. The domain contains a DNS server named Server1. Server1 hosts a DNS zone named fabrikam.com that was signed by DNSSEC.

You need to ensure that all the member servers in the domain perform DNSSEC validation for the fabrikam.com namespace.

What should you do?

- A. From a Group Policy Object (GPO). modify the Network List Manager policies.
- B. On each member server, run the Add-DnsServerTrustAnchor cmdlet.
- C. From a Group Policy Object (GPO). add a rule to the Name Resolution Policy Table (NRPT).
- D. On Served, run the Add-DnsServerTrustAnchor cmdlet.

**Answer: C** ([LEAVE A REPLY](#))

### NEW QUESTION: 41

You have an Azure subscription that contains the following resources:

- \* An Azure Log Analytics workspace
- \* An Azure Automation account
- \* Azure Arc.

You have an on-premises server named Server1 that is onboarded to Azure Arc. You need to manage Microsoft updates on Server1 by using Azure Arc. Which two actions should you perform? Each correct answer presents part of the solution.

NOTE: Each correct selection is worth one point.

- A. Add Microsoft Sentinel to the Log Analytics workspace
- B. On Server1, install the Azure Monitor agent
- C. From the Automation account, enable Update Management for Server1.
- D. From the Virtual machines data source of the Log Analytics workspace, connect Server1.

**Answer: B,C (LEAVE A REPLY)**

Reference:

<https://docs.microsoft.com/en-us/azure/cloud-adoption-framework/manage/hybrid/server/best-practices/arc-update-management>

#### **NEW QUESTION: 42**

Your network contains an Active Directory Domain Services (AD DS) domain.

You have a Group Policy Object (GPO) named GPO1 that contains Group Policy preferences.

You plan to link GPO1 to the domain.

You need to ensure that the preference in GPO1 apply only to domain member servers and NOT to domain controllers or client computers. All the other Group Policy settings in GPO1 must apply to all the computers. The solution must minimize administrative effort.

Which type of item level targeting should you use?

- A. Domain
- B. Operating System
- C. Security Group
- D. Environment Variable

**Answer: B (LEAVE A REPLY)**

Reference:

[https://docs.microsoft.com/en-us/previous-versions/windows/it-pro/windows-server-2012-r2-and-2012/dn789189\(v=ws.11\)#operating-system-targeting](https://docs.microsoft.com/en-us/previous-versions/windows/it-pro/windows-server-2012-r2-and-2012/dn789189(v=ws.11)#operating-system-targeting)

#### **NEW QUESTION: 43**

You need to meet the technical requirements for VM1.

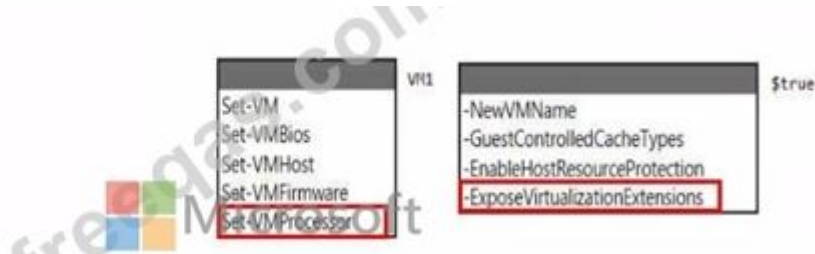
Which cmdlet should you run first? To answer, select the appropriate options in the answer area.

NOTE: Each correct selection is worth one point.



**Answer:**

Answer Area



**NEW QUESTION: 44**

Your network contains an Active Directory Domain Services (AD DS) domain named contoso.com. The domain contains two servers named Server1 and Server2. Server1 contains a disk named Disk2. Disk2 contains a folder named UserData. UserData is shared to the Domain Users group. Disk2 is configured for deduplication. Server1 is protected by using Azure Backup.

Server1 fails.

You connect Disk2 to Server2.

You need to ensure that you can access all the files on Disk2 as quickly as possible.

What should you do?

- A. Create a storage pool.
- B. Restore files from Azure Backup.
- C. Install the File Server Resource Manager server role.
- D. Install the Data Deduplication server role.

**Answer: C (LEAVE A REPLY)**

Reference:

<https://docs.microsoft.com/en-us/windows-server/storage/data-deduplication/overview>

**NEW QUESTION: 45**

Note: This question is part of a series of questions that present the same scenario. Each question in the series contains a unique solution that might meet the stated goals. Some question sets might have more than one correct solution, while others might not have a correct solution.

After you answer a question in this section, you will NOT be able to return to it. As a result, these questions will not appear in the review screen.

You are planning the deployment of DNS to a new network.

You have three internal DNS servers as shown in the following table.

Name	Location	IP address	Local DNS zone
Server1	Montreal	10.0.1.10	contoso.local
Server2	Toronto	10.0.2.10	east.contoso.local
Server3	Seattle	10.0.3.10	west.contoso.local

The contoso.local zone contains zone delegations for east.contoso.local and west.contoso.local.

All the DNS servers use root hints.

You need to ensure that all the DNS servers can resolve the names of all the internal namespaces and internet hosts.

Solution: On Server2 and Server3, you configure a conditional forwarder for contoso.local.

Does this meet the goal?

A. Yes

B. No

**Answer: B (LEAVE A REPLY)**

[https://docs.microsoft.com/en-us/previous-versions/windows/it-pro/windows-server-2008-r2-and-2008/cc794735\(v=ws.10\)](https://docs.microsoft.com/en-us/previous-versions/windows/it-pro/windows-server-2008-r2-and-2008/cc794735(v=ws.10))

### NEW QUESTION: 46

You have an onpremises DNS server named Server1 that runs Windows Server. Server 1 hosts a DNS zone named fabrikam.com You have an Azure subscription that contains the resources shown in the following table.

Name	Type	Description
Vnet1	Virtual network	Connects to the on-premises network by using a site-to-site VPN
VM1	Virtual machine	Runs Windows Server role installed
contoso.com	Private DNS zone	Linked to Vnet1
contoso.com	Public DNS zone	Contains the DNS records of all the platform as a service (PaaS) resources

Answer Area

On Vnet1:

Configure VM1 to forward requests for the contoso.com zone to the public DNS zone.  
 Configure Vnet1 to use a custom DNS server that is set to the Azure-provided DNS at 168.63.129.16.  
 Configure VM1 to forward requests for the contoso.com zone to the Azure-provided DNS at 168.63.129.16.

On the on-premises network:

Configure forwarding for the contoso.com zone to VM1.  
 Configure forwarding for the contoso.com zone to the public DNS zone.  
 Configure forwarding for the contoso.com zone to the Azure-provided DNS at 168.63.129.16.

**Answer:**

Answer Area

On Vnet1:

Configure VM1 to forward requests for the contoso.com zone to the public DNS zone.  
 Configure Vnet1 to use a custom DNS server that is set to the Azure-provided DNS at 168.63.129.16.  
 Configure VM1 to forward requests for the contoso.com zone to the Azure-provided DNS at 168.63.129.16.

On the on-premises network:

Configure forwarding for the contoso.com zone to VM1.  
 Configure forwarding for the contoso.com zone to the public DNS zone.  
 Configure forwarding for the contoso.com zone to the Azure-provided DNS at 168.63.129.16.

**Valid AZ-800 Dumps** shared by PrepPdf.com for Helping Passing AZ-800 Exam!  
PrepPdf.com now offer the **newest AZ-800 exam dumps**, the PrepPdf.com AZ-800 exam **questions have been updated** and **answers have been corrected** get the **newest** PrepPdf.com AZ-800 dumps with Test Engine here:  
<https://www.preppdf.com/Microsoft/AZ-800-prepaway-exam-dumps.html> (251 Q&As Dumps,  
**40%OFF Special Discount: Exam-Tests**)

### NEW QUESTION: 47

You have an Azure virtual machine named VM1 that runs Windows Server

You need to configure the management of VM1 to meet the following requirements:

- \* Require administrators to request access to VM1 before establishing a Remote Desktop connection.
- \* Limit access to VM1 from specific source IP addresses.
- \* Limit access to VM1 to a specific management port

What should you configure?

- A. a network security group (NSG)
- B. Azure Active Directory (Azure AD) Privileged identity Management (PIM)
- C. Azure Front Door
- D. Microsoft Defender for Cloud

**Answer:** ([SHOW ANSWER](#))

Reference:

<https://docs.microsoft.com/en-us/azure/defender-fo>

### NEW QUESTION: 48

You create a new Azure subscription.

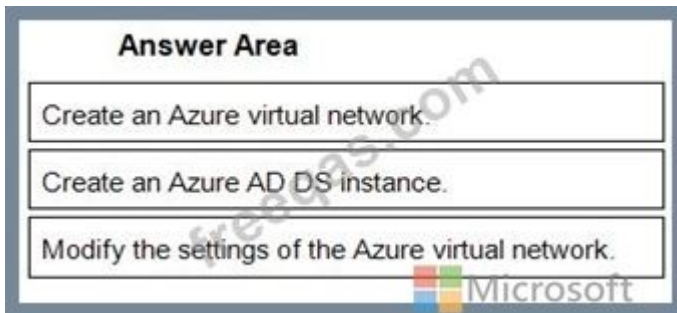
You plan to deploy Azure Active Directory Domain Services (Azure AD DS) and Azure virtual machines.

You need to ensure that the virtual machines can join Azure AD DS.

Which three actions should perform in sequence? To answer, move the appropriate actions from the list of action of the answer area and arrange them in the correct order.

The screenshot shows an exam question interface. On the left, under the heading "Actions", there is a list of five actions: "Run the Active Directory Domain Services Installation Wizard", "Create an Azure virtual network.", "Install the Active Directory Domain Services role.", "Install Azure AD Connect.", and "Modify the settings of the Azure virtual network." Below this list is "Create an Azure AD DS instance." On the right, under the heading "Answer Area", there are two empty boxes for placing the actions. A large "Microsoft" watermark is visible across the center, and a "Preppdf.com" watermark is visible in the bottom right corner. There are also navigation arrows on the right side of the answer area.

**Answer:**



- 1 - Create an Azure virtual network.
- 2 - Create an Azure AD DS instance.
- 3 - Modify the settings of the Azure virtual network.

**NEW QUESTION: 49**

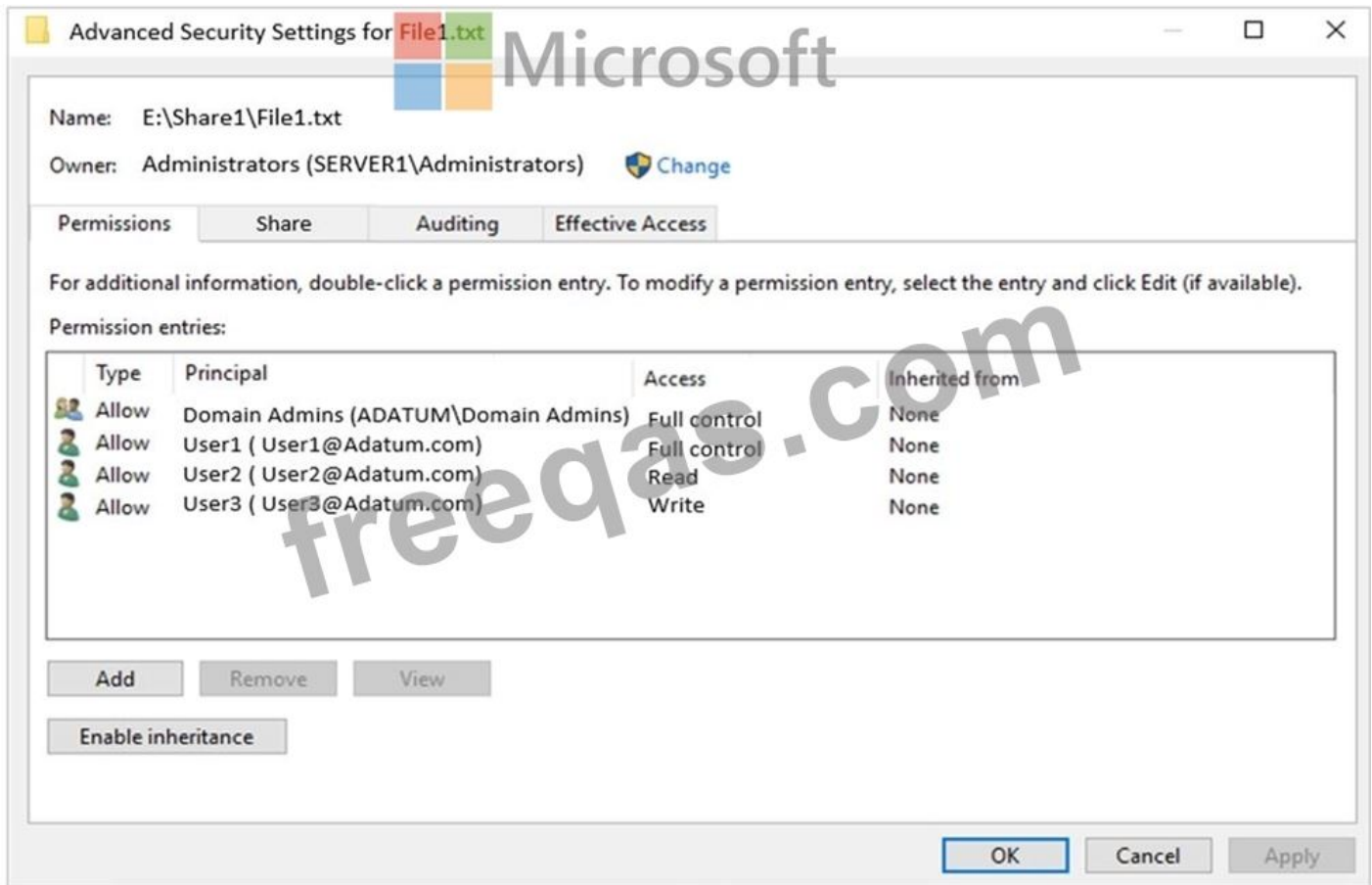
Your network contains an Active Directory Domain Services (AD DS) domain named adatum.com. The domain contains a file server named Server1 and three users named User1, User2, and User3.

Server1 contains a shared folder named Share1 that has the following configurations:

```
ShareState           : Online
AvailabilityType     : NonClustered
FolderEnumerationMode : AccessBased
CachingMode         : Manual
LeasingMode         : Full
SmbInstance         : Default
CompressData        : False
ContinuouslyAvailable : False
EncryptData         : False
Name                : Share1
Path                : E:\Share1
ShadowCopy          : False
```

The share permissions for Share1 are configured as shown in the Share Permissions exhibit.

Share1 contains a file named File1.bxt. The advanced security settings for File1.txt are configured as shown in the File Permissions exhibit.



For each of the following statements, select Yes if the statement is true. Otherwise, select No.  
NOTE: Each correct selection is worth one point.

Statements	Yes	No
When User1 connects to \\Server1.adatum.com\Share1\, the user can take ownership of File1.txt.	<input type="radio"/>	<input type="radio"/>
When User2 connects to \\Server1.adatum.com\Share1\, File1.txt is visible.	<input type="radio"/>	<input type="radio"/>
When User3 connects to \\Server1.adatum.com\Share1\, File1.txt is visible.	<input type="radio"/>	<input type="radio"/>

**Answer:**

Statements	Yes	No
When User1 connects to \\Server1.adatum.com\Share1\, the user can take ownership of File1.txt.	<input type="radio"/>	<input checked="" type="radio"/>
When User2 connects to \\Server1.adatum.com\Share1\, File1.txt is visible.	<input checked="" type="radio"/>	<input type="radio"/>
When User3 connects to \\Server1.adatum.com\Share1\, File1.txt is visible.	<input checked="" type="radio"/>	<input type="radio"/>

**NEW QUESTION: 50**

Note: This question is part of a series of questions that present the same scenario. Each question in the series contains a unique solution that might meet the stated goals. Some question sets might have more than one correct solution, while others might not have a correct solution. After you answer a question in this section, you will NOT be able to return to it. As a result, these questions will not appear in the review screen.

Your network contains an Active Directory Domain Services (AD DS) forest. The forest contains three Active Directory sites named Site1, Site2, and Site3. Each site contains two domain controllers. The sites are connected by using DEFAULTIPSITELINK.

You open a new branch office that contains only client computers.

You need to ensure that the client computers in the new office are primarily authenticated by the domain controllers in Site1.

Solution: You create an organization unit (OU) that contains the client computers in the branch office. You configure the Try Next Closest Site Group Policy Object (GPO) setting in a GPO that is linked to the new OU.

Does this meet the goal?

- A. No
- B. Yes

Answer: A ([LEAVE A REPLY](#))

### NEW QUESTION: 51

You need to meet the security requirements for passwords.

Where should you configure the components for Azure AD Password Protection? To answer, drag the appropriate components to the correct locations. Each component may be used once, more than once, or not at all. You may need to drag the split bar between panes or scroll to view content.

NOTE Each correct selection is worth one point.



Answer:



Reference:

<https://docs.microsoft.com/en-us/azure/active-directory/authentication/concept-password-ban-bad-on-premises>

### NEW QUESTION: 52

You have a server named Host1 that has the Hyper-V server role installed. Host1 hosts a virtual machine named VM1.

You have a management server named Server1 that runs Windows Server. You remotely manage Host1 from Server1 by using Hyper-V Manager.

You need to ensure that you can access a USB hard drive connected to Server1 when you connect to VM1 by using Virtual Machine Connection.

Which two actions should you perform? Each correct answer presents part of the solution.

NOTE: Each correct selection is worth one point.

- A. From the Hyper-V Settings of Host1, select Allow enhanced session mode
- B. From Disk Management on Host1, attach a virtual hard disk.
- C. From Virtual Machine Connection, switch to a basic session.
- D. From Virtual Machine Connection select Show Options and then select the USB hard drive.
- E. From Disk Management on Host1, select Rescan Disks

**Answer: (SHOW ANSWER)**

Reference:

<https://docs.microsoft.com/en-us/windows-server/virtualization/hyper-v/learn-more/use-local-resources-on-hyper-v-virtual-machine-with-vmconnect>

### NEW QUESTION: 53

Your network contains an Active Directory Domain Services (AD DS) domain named contoso.com.

You need to identify which server is the PDC emulator for the domain.

Solution: from Active Directory Users and Computers, you right-click contoso.com in the console tree, and then select Operations Master Does this meet the goal?

- A. No
- B. Yes

**Answer: (SHOW ANSWER)**

### NEW QUESTION: 54

Note: This question is part of a series of questions that present the same scenario. Each question in the series contains a unique solution that might meet the stated goals. Some question sets might have more than one correct solution, while others might not have a correct solution.

After you answer a question in this section, you will NOT be able to return to it. As a result, these questions will not appear in the review screen.

You are planning the deployment of DNS to a new network.

You have three internal DNS servers as shown in the following table.

Name	Location	IP address	Local DNS zone
Server1	Montreal	10.0.1.10	contoso.local
Server2	Toronto	10.0.2.10	east.contoso.local
Server3	Seattle	10.0.3.10	west.contoso.local

The contoso.local zone contains zone delegations for east.contoso.local and west.contoso.local. All the DNS servers use root hints.

You need to ensure that all the DNS servers can resolve the names of all the internal namespaces and internet hosts.

Solution: You configure Server2 and Server3 to forward DNS requests to 10.0.1.10.

Does this meet the goal?

A. Yes

B. No

**Answer: B (LEAVE A REPLY)**

### NEW QUESTION: 55

You have a server named Server1 that hosts Windows containers. You plan to deploy an application that will have multiple containers. Each container will be You need to create a Docker network that supports the deployment of the application. Which type of network should you create?

A. transparent

B. I2bridge

C. NAT

D. I2tunnel

**Answer: A (LEAVE A REPLY)**

Reference:

<https://docs.microsoft.com/en-us/virtualization/windowscontainers/container-networking/network-drivers-topologies>

### NEW QUESTION: 56

You need to configure Azure File Sync to meet the file sharing requirements. What should you do? To answer, select the appropriate options in the answer are a. NOTE Each correct selection is worth one point.

Answer Area

Microsoft

Minimum number of sync groups to create:

Minimum number of Storage Sync Services to create:

Minimum number of Storage Sync Services to create:

**Answer:**



Reference:

<https://docs.microsoft.com/en-us/azure/storage/file-sync/file-sync-planning>

**NEW QUESTION: 57**

Your network contains an on -premises Active Directory Domain Services (AD DS) domain named contoso.com The domain contains the objects shown in the following table.

Name	Type
User1	User
Group1	Universal security group
Group2	Domain local security group
Computer1	Computer

You plan to sync contoso.com with an Azure Active Directory (Azure AD) tenant by using Azure AD Connect You need to ensure that all the objects can be used in Conditional Access policies What should you do?

- A. Change the scope of Group2 to Universal
- B. Clear the Configure device writeback option.
- C. Change the scope o' Group1 and Group2 to Global
- D. Select the Configure Hybrid Azure AD join option.

**Answer: D (LEAVE A REPLY)**

Hybrid Azure AD join needs to be configured to enable Computer1 to be used in Conditional Access Policies. Synchronized users, universal groups and domain local groups can be used in Conditional Access Policies.

**Valid AZ-800 Dumps** shared by PrepPdf.com for Helping Passing AZ-800 Exam!  
 PrepPdf.com now offer the **newest AZ-800 exam dumps**, the PrepPdf.com AZ-800 exam **questions have been updated** and **answers have been corrected** get the **newest** PrepPdf.com AZ-800 dumps with Test Engine here:  
<https://www.preppdf.com/Microsoft/AZ-800-prepaway-exam-dumps.html> (251 Q&As Dumps,  
**40%OFF Special Discount: Exam-Tests**)