

Nokia.4A0-C04.v2022-10-18.q110

Exam Code:	4A0-C04
Exam Name:	Nokia NRS II Composite Exam: OSPF version
Certification Provider:	Nokia
Free Question Number:	110
Version:	v2022-10-18
# of views:	1705
# of Questions views:	1100
https://www.freeqas.com/qa/Nokia/4A0-C04/Nokia.4A0-C04.v2022-10-18.q110.html	

NEW QUESTION: 1

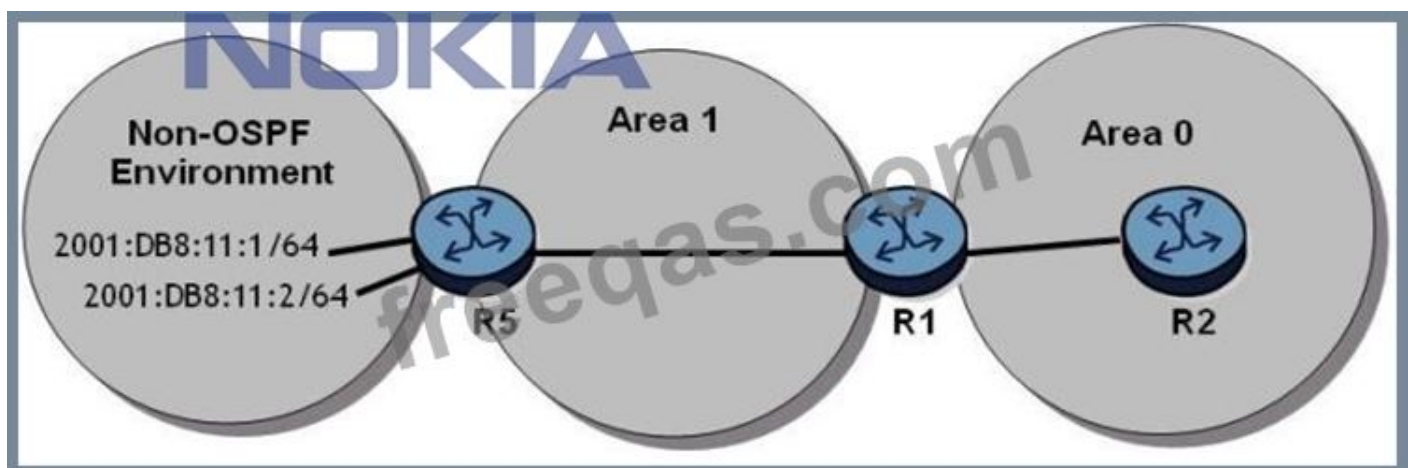
Which of the following about SAPs is FALSE?

- A. A SAP can only be created on a port configured as "access".
- B. A SAP is created by specifying a physical port and an encapsulation type.
- C. A SAP is the subscriber's point of entry to the service network.
- D. A SAP can be associated with more than one service.

Answer: ([SHOW ANSWER](#))

NEW QUESTION: 2

Click on the exhibit.



The route table on router R2 shows the system address of router R5 but it does not show any of the interfaces from the non-OSPF area.

What may be causing this?

- A. 'asbr' is missing from router R1's configuration.
- B. Router R5 does not have an export policy for these prefixes.
- C. Router R1 needs to have an export policy added to it.
- D. Router R1 needs to have an import policy added to it.

Answer: B ([LEAVE A REPLY](#))

NEW QUESTION: 3

Which of the following about MPLS shortcuts for IGP on an Nokia 7750 SR is FALSE?

- A. Multiple MPLS tunnels can be installed in the FIB.
- B. MPLS tunnels can be used to resolve the prefixes learned via IGP.
- C. Both LDP and RSVP-TE based tunnels can be used.
- D. An IGP route takes priority over a transport tunnel.

Answer: D ([LEAVE A REPLY](#))

NEW QUESTION: 4

Which of the following statements apply to link state protocol behavior? Choose three answers.

- A. The topological database is the same for all routers in a single area.
- B. Information about directly connected links is sent to all neighbors.
- C. An adjacency database is maintained by each router.
- D. Routers broadcast the entire route table to all neighbors.
- E. The sequence number for an update is incremented as it is flooded from router to router.

Answer: A,B,C ([LEAVE A REPLY](#))

NEW QUESTION: 5

Which of the following statements best describes an OSPF type 3 LSA?

- A. An OSPF type 3 LSA is an inter-area LSA, generated by an ASBR to describe external routes.
- B. An OSPF type 3 LSA is an inter-area LSA, generated by the ABR only when route summarization is configured.
- C. An OSPF type 3 LSA is an intra-area LSA, generated by the ABR only when route summarization is configured.
- D. An OSPF type 3 LSA is an inter-area LSA, generated by the ABR to describe a route to neighbors outside the area.

Answer: D ([LEAVE A REPLY](#))

NEW QUESTION: 6

Which of the following regarding the location of an MPLS label is FALSE?

- A. The MPLS label value may be carried in a Frame Relay header.
- B. The MPLS label value may be carried in a shim header.
- C. The MPLS label value may be carried in an OSPF header.
- D. The MPLS label value may be carried in an ATM header.

Answer: C ([LEAVE A REPLY](#))

NEW QUESTION: 7

A router in AS 65100 receives two BGP routes. The first route is for 138.1.1.0/24 with an AS Path of 65200

65300, Local Preference of 100, MED of 100, and router ID 10.10.10.10. The second route is for 138.1.0.0/16 with an AS Path of 65500 65300, Local Preference of 150, MED of 100, and router ID 10.1.1.1. Assuming all other attributes are equal, which route would be used to forward an IP packet with destination IP address 138.1.1.1?

- A. Both routes are used.
- B. The second BGP route.
- C. The first BGP route.
- D. It is impossible to determine without the value of the origin code for both routes.

Answer: C ([LEAVE A REPLY](#))

NEW QUESTION: 8

What is the purpose of a T-LDP session?

- A. It is used to signal the transport labels in the provider core.
- B. It allows link LDP to be configured on the edge devices only.
- C. It allows selective control over which devices are configured for LDP.
- D. It is used to signal the service labels in the provider core.

Answer: D ([LEAVE A REPLY](#))

NEW QUESTION: 9

What is the metric and maximum routable value for RIP?

- A. Link cost and 16
- B. Hop count and 15
- C. Hop count and 16
- D. Link cost and 15

Answer: B ([LEAVE A REPLY](#))

NEW QUESTION: 10

A router in AS 65100 receives three routes for 138.120.0.0/16. The first route has an AS Path of 65200 65400 65300 and a local preference of 150. The second route has an AS Path of 65200 65300 and a local preference of 100. The third route has an AS Path of 65600 65300 and a local preference of 100. Which route will appear in the RIB-out?

- A. Only the third route will appear in the RIB-Out.
- B. Only the second route will appear in the RIB-Out.
- C. All routes will appear in the RIB-Out.
- D. Only the first route will appear in the RIB-Out.

Answer: ([SHOW ANSWER](#))

NEW QUESTION: 11

Facility fast reroute with node protection is enabled for an LSP, which of the following is FALSE?

- A. When a failure occurs, the PLR pushes an additional label onto the label stack.
- B. Each PLR signals a bypass tunnel that avoids the next-hop downstream router.
- C. The head-end router sets the local protection desired flag in the session attribute object.
- D. No bypass tunnel is established if the PLR cannot provide node protection.

Answer: D ([LEAVE A REPLY](#))

NEW QUESTION: 12

Which of the following regarding MPLS encapsulation for VPRN services is TRUE?

- A. The customer's Layer 3 header is removed at the eLER.
- B. The customer's Layer 2 header is removed at the eLER.
- C. The customer's Layer 3 header is removed at the iLER.
- D. The customer's Layer 2 header is removed at the iLER.

Answer: C ([LEAVE A REPLY](#))

NEW QUESTION: 13

Click on the exhibit.

```
*A:SRC_R1# show router ldp bindings
```

```
LDP LSR ID: 10.10.10.1
```

```
Legend: U - Label In Use, N - Label Not In Use, W - Label Withdrawn
S - Status Signaled Up, D - Status Signaled Down
E - Epipe Service, V - VPLS Service, M - Mirror Service
A - Apipe Service, F - Fpipe Service, I - IES Service, R - VPRN service
P - Ipipe Service, WP - Label Withdraw Pending, C - Cpipe Service
BU - Alternate Next-hop for Fast Re-Route, TLV - (Type, Length: Value)
```

```
LDP Prefix Bindings
```

Prefix Peer	IngLbl	EgrLbl	EgrIntf/ LspId	EgrNextHop
10.10.10.1/32	131071U	--	--	--
10.10.10.2/32	--	131071	1/1/1	10.1.2.2
192.10.1.2/32	--	131067	--	--

```
No. of Prefix Bindings: 3
```

What is the possible reason that the label for prefix 192.10.1.2/32 is not active?

- A. The router receives an invalid label for the prefix 192.10.1.2/32 from its peer.
- B. The router does not have a route to reach to the peer 10.10.10.2/32.
- C. The router does not have a route to reach to the prefix 192.10.1.2/32.

D. The router does not have an export policy defined to export the prefix 192.10.1.2/32 into LDP.

Answer: C ([LEAVE A REPLY](#))

NEW QUESTION: 14

Which of the following comparisons between E-pipes and VPLSes is FALSE?

- A. They both function as a Layer 2 switch from the service provider's perspective.
- B. MAC addresses are learned by VPLSes, but not by E-pipes.
- C. They both use SAPs as the demarcation point between the customer and the provider.
- D. They both support SAP encapsulations of null, dot1Q and Q-in-Q.

Answer: A ([LEAVE A REPLY](#))

NEW QUESTION: 15

Which type of OSPF LSA has the following characteristics: It is flooded only within the area it originates from and can be originated by any OSPF router within the area (including non-DR routers).

- A. Type 4 ASBR LSA
- B. Type 2 Network LSA
- C. Type 3 Summary LSA
- D. Type 1 Router LSA

Answer: D ([LEAVE A REPLY](#))

NEW QUESTION: 16

Click the exhibit.



Which of the following is a valid confederation configuration for Router R2?

- A. R2>config>router# info

autonomous-system 65540
confederation 65540 members 65541 65542
- B. R2>config>router# info

autonomous-system 65542
confederation 65540 members 65541
- C. R2>config>router# info

autonomous-system 65542
confederation 65540 members 65541 65542
- D. R2>config>router# info

autonomous-system 65540
confederation 65542 members 65541

- A. Option A
B. Option C
C. Option B
D. Option D

Answer: ([SHOW ANSWER](#))

Valid 4A0-C04 Dumps shared by PrepPdf.com for Helping Passing 4A0-C04 Exam!
PrepPdf.com now offer the **newest 4A0-C04 exam dumps**, the PrepPdf.com 4A0-C04 exam questions have been updated and answers have been corrected get the newest PrepPdf.com 4A0-C04 dumps with Test Engine here: <https://www.preppdf.com/Nokia/4A0-C04-prepaway-exam-dumps.html> (300 Q&As Dumps, **40%OFF Special Discount: Exam-Tests**)

NEW QUESTION: 17

An interface is configured on a router for OSPF but the command "show router ospf neighbor" does not show any neighbors. Which of the following is NOT a possible cause?

- A. The router has not received a valid OSPF Hello packet from its neighbor.
- B. The interface facing the neighbor is down.
- C. An OSPF database description packet has not been received from the neighbor.
- D. The interface is included in a different area than the neighbor router.

Answer: C ([LEAVE A REPLY](#))

NEW QUESTION: 18

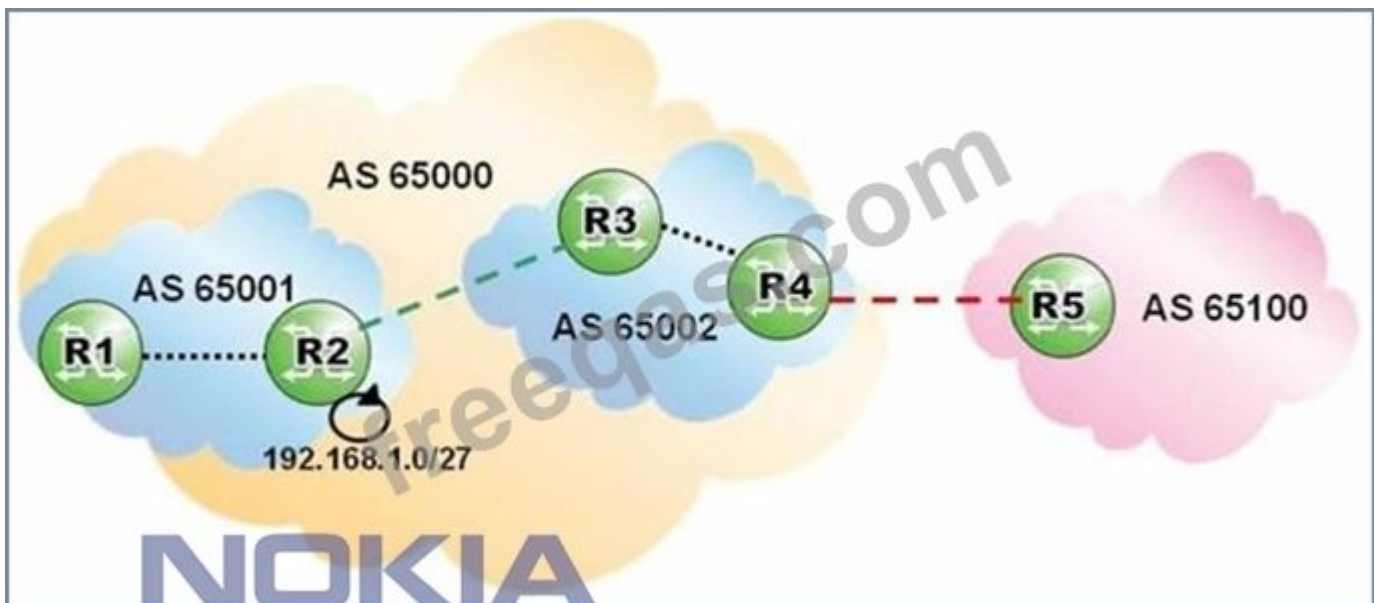
What are the types of networks supported on an Nokia 7750 SR for OSPF? (Choose 2)

- A. Broadcast
- B. Point-to-Multipoint
- C. Point-to-Point
- D. Non-Broadcast Multi-Access

Answer: A,C ([LEAVE A REPLY](#))

NEW QUESTION: 19

Click the exhibit.



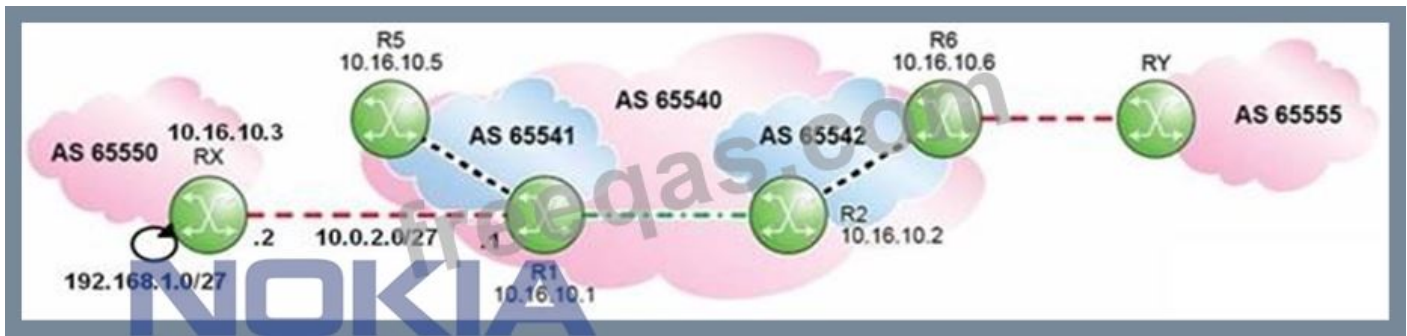
Router R2 is advertising prefix 192.168.1.0/27 with community "no-advertise" towards AS 65002. Which routers receive an update for that prefix?

- A. Routers R3 and R4 only.
- B. Routers R3, R4 and R5 only.
- C. Router R2 does not advertise an update for the prefix.
- D. Router R3 only.

Answer: D ([LEAVE A REPLY](#))

NEW QUESTION: 20

Click the exhibit.



Given the following configuration for router R1, what is the expected Next Hop for prefix 192.168.1.0/27 as seen on router R2?

```
R1>config>router>bgp# info
```

```
-----
group "eBGP"
  peer-as 65550
  neighbor 10.0.2.2
  exit
exit
group "Conf_eBGP"
  peer-as 65542
  neighbor 10.16.10.2
  exit
exit
group "Member-AS"
  next-hop-self
  neighbor 10.16.10.5
  peer-as 65541
  exit
exit
no shutdown
```

- A. 10.0.2.1
- B. 10.16.10.1
- C. 10.0.2.2
- D. 10.16.10.3

Answer: ([SHOW ANSWER](#))

NEW QUESTION: 21

Click on the exhibit.

```
*A:SRC R3# oam lsp-ping prefix 192.10.1.2/32
LSP-PING 192.10.1.2/32: 80 bytes MPLS payload
Seq=1, send from intf toR1, reply from 10.10.10.2
      udp-data-len=32 ttl=255 rtt=2.45ms rc=3 (EgressRtr)

---- LSP 192.10.1.2/32 PING Statistics ----
1 packets sent, 1 packets received, 0.00% packet loss
round-trip min = 2.45ms, avg = 2.45ms, max = 2.45ms, stddev = 0.000ms
*A:SRC R3#
```

After the lsp-ping command is executed, which of the following best describe the router's action?

- A. MPLS Echo Request packets are sent within the RSVP-TE tunnel that are signaled for 192.10.1.2.
- B. MPLS Echo Request packets are sent within the LDP tunnel that are signaled for 192.10.1.2.
- C. MPLS Echo Request packets are sent unlabeled to the prefix 192.10.1.2.
- D. MPLS Echo Request packets are sent over TCP.

Answer: B (LEAVE A REPLY)

NEW QUESTION: 22

Exhibit

```
ALA-1# configure router
ALA-1>config>router# router-id 138.120.54.73
ALA-1>config>router# ospf
ALA-1>config>router>ospf$ area 0.0.0.0
ALA-1>config>router>ospf>area$ interface ALA-2
ALA-1>config>router>ospf>area>if# interface-type broadcast
ALA-1>config>router>ospf>area>if# metric 100
ALA-1>config>router>ospf>area>if# priority 25
ALA-1>config>router>ospf>area>if# exit
```

```
•ALA-2# configure router
•ALA-2>config>router# router-id 138.120.54.72
•ALA-2>config>router# ospf
•ALA-2>config>router>ospf$ area 0.0.0.0
•ALA-2>config>router>ospf>area$ interface ALA-1
•ALA-2>config>router>ospf>area>if# interface-type point-to-point
•ALA-2>config>router>ospf>area>if# metric 10
•ALA-2>config>router>ospf>area>if# priority 25
•ALA-2>config>router>ospf>area>if# exit
•ALA-2>config>router>ospf>area# interface system
```

Given the two configurations shown, identify the two incorrect statements below: (Choose two)

- A. Metric values differ, but this does not prevent OSPF operation.
- B. The system interface is missing in one configuration so OSPF will not operate correctly.
- C. Both routers will generate OSPF Hello packets.
- D. The interface type settings differ, but OSPF will still operate correctly.

Answer: B,D (LEAVE A REPLY)

NEW QUESTION: 23

Click the exhibit.

```
R1>config>service# info
-----
customer 1 create
    description "Default customer"
exit
customer 100 create
    description "Cust 100"
exit
sdp 2 mpls create
    far-end 10.10.10.2
    ldp
    keep-alive
    shutdown
exit
no shutdown
exit
epipe 12 customer 100 create
    sap 1/1/1:30 create
    exit
    spoke-sdp 2:44 create
        no shutdown
    exit
    no shutdown
exit
-----
```

Which of the following statements about the E-pipe service is TRUE?

- A. The service's VC ID is 44.
- B. The service requires a second spoke SDP on this router.
- C. The service will accept VLAN tag 100.
- D. The service is a local service.

Answer: A (LEAVE A REPLY)

NEW QUESTION: 24

Which of the following about SDPs is FALSE?

- A. An SDP can simultaneously support GRE and MPLS encapsulation.
- B. A single SDP can carry different types of services.
- C. An SDP can use the system IP address to indicate the far-end router.
- D. An SDP is not required for a local service.

Answer: A (LEAVE A REPLY)

NEW QUESTION: 25

Which of the following about CSPF is TRUE?

- A. Each downstream router performs its own CSPF calculation for an LSP.
- B. The tail-end router performs the CSPF calculation for an LSP.

- C. CSPF calculations are always performed on RSVP-TE based LSPs.
- D. The head-end router performs the CSPF calculation for an LSP.

Answer: D ([LEAVE A REPLY](#))

NEW QUESTION: 26

An SDP using GRE encapsulation is configured for an E-pipe service. The network port used by the SDP has an MTU of 8000. What value does the SDP path MTU have by default on an Nokia 7750 SR?

- A. 7958
- B. 8022
- C. 7978
- D. 8042

Answer: ([SHOW ANSWER](#))

NEW QUESTION: 27

Which of the following LSA types stay within an OSPF area, and are not flooded outside of the area? Choose two answers.

- A. Router LSA
 - B. Type 5 (AS external) LSAs
 - C. Summary router LSA
 - D. Network LSA
- C Summary network LSA

Answer: ([SHOW ANSWER](#))

NEW QUESTION: 28

Which of the following commands would correctly configure the confederation AS number as 65200 with a member AS of 65202?

- A. config>router>bgp= confederation 65200 members 65202
- B. config>router= confederation 65202 members 65200
- C. config>router- confederation 65200 members 65202
- D. config>router>bgp= confederation 65202 members 65200

Answer: ([SHOW ANSWER](#))

NEW QUESTION: 29

How is the aggregator attribute handled with 32-bit AS numbers?

- A. With the same method and attribute as 16-bit AS numbers.
- B. Aggregation is not yet supported with 32-bit AS numbers.
- C. With the same method as 16-bit AS numbers, but using the AS4_Aggregator attribute.
- D. By using a dummy value of 23456 in the 16-bit AS aggregator field. This value lets the router know it needs to read the 32-bit AS number that is contained in the nextTLV.

Answer: ([SHOW ANSWER](#))

NEW QUESTION: 30

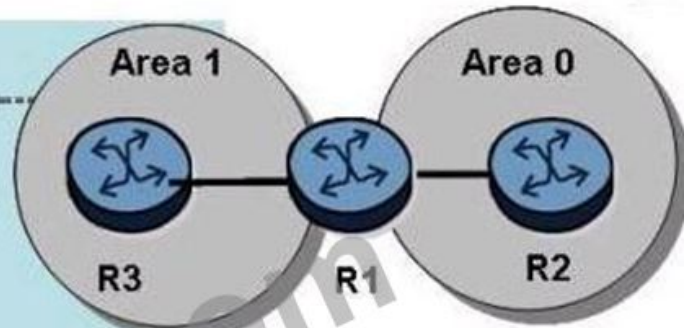
Click the exhibit button.

Exhibit 4.6.g



```
*A:R3>config>router>ospf# show router route-table
Route Table (Router: Base)
-----
Dest Prefix          Type Proto Age      Pref
  Next Hop[Interface Name]      Metric
0.0.0.0/0            Remote OSPF 00h00m23s 10
  10.1.3.1              101
10.1.3.0/27          Local Local 05d10h00m 0
  toR1                    0
10.10.10.3/32        Local Local 0144d08h 0
  system                  0
No. of Routes: 3

*A:R2# show router route-table 192.168.0.0/16 longer
Route Table (Router: Base)
-----
Dest Prefix          Type Proto Age      Pref
  Next Hop[Interface Name]      Metric
192.168.1.0/24       Local Local 01h09m41s 0
  loop1                  0
192.168.2.0/24       Local Local 01h09m41s 0
  loop2                  0
192.168.3.0/24       Local Local 01h09m40s 0
  loop3                  0
192.168.4.0/24       Local Local 01h09m40s 0
  loop4                  0
No. of Routes: 4
```



Given the topology and the show commands, and assuming that router R2 advertises all of its loopbacks into OSPF, what is the correct router R1 configuration?

```

A. *A:R1>config>router>ospf# info
-----
area 0.0.0.0
 interface "toR2"
  interface-type point-to-point
 exit
exit
area 0.0.0.1
 nssa
  originate-default-route
  no summaries
 exit
 interface "toR3"
  interface-type point-to-point
 exit
exit

-----
*A:R1>config>router>ospf#

B. *A:R1>config>router>ospf# info
-----
area 0.0.0.0
 interface "toR2"
  interface-type point-to-point
 exit
exit
area 0.0.0.1
 nssa
  originate-default-route
 exit
 interface "toR3"
  interface-type point-to-point
 exit
exit

-----
*A:R1>config>router>ospf#

C. *A:R1>config>router>ospf# info
-----
area 0.0.0.0
 interface "toR2"
  interface-type point-to-point
 exit
exit
area 0.0.0.1
 area-range 192.168.0.0/16 advertise
 interface "toR3"
  interface-type point-to-point
 exit
exit

-----
*A:R1>config>router>ospf#

D. *A:R1>config>router>ospf# info
-----
area 0.0.0.0
 area-range 192.168.0.0/16 advertise
 interface "toR2"
  interface-type point-to-point
 exit
exit
area 0.0.0.1
 interface "toR3"
  interface-type point-to-point
 exit
exit

-----
*A:R1>config>router>ospf#

```

- A. Option C
- B. Option D
- C. Option B
- D. Option A

Answer: ([SHOW ANSWER](#))

NEW QUESTION: 31

What is the protocol number for OSPF in the IP header?

- A. OSPF uses UDP, so the protocol number is 17.
- B. OSPF has its own protocol number of 89.
- C. OSPF uses TCP, so the protocol number is 6.
- D. OSPF does not use IP.

Answer: B ([LEAVE A REPLY](#))

Valid 4A0-C04 Dumps shared by PrepPdf.com for Helping Passing 4A0-C04 Exam! PrepPdf.com now offer the **newest 4A0-C04 exam dumps**, the PrepPdf.com 4A0-C04 exam **questions have been updated** and **answers have been corrected** get the **newest** PrepPdf.com 4A0-C04 dumps with Test Engine here: <https://www.preppdf.com/Nokia/4A0-C04-prepaway-exam-dumps.html> (300 Q&As Dumps, **40%OFF Special Discount: Exam-Tests**)

NEW QUESTION: 32

Which of the following commands can be used to display the number of SPF computations that have been performed on a router?

- A. show router ospf status
- B. show router ospf area <area-id>
- C. show router ospf neighbor
- D. show router ospf interface

Answer: B ([LEAVE A REPLY](#))

NEW QUESTION: 33

A BGP session is in OpenConfirm state. Which of the following messages must be received to transition to Established state?

- A. Keepalive
- B. Open
- C. Notification
- D. Update

Answer: ([SHOW ANSWER](#))

NEW QUESTION: 34

Which of the following statements regarding Internet Exchange Points is FALSE?

- A. They provide services at the local, regional and continental levels.
- B. They provide both peering and transit services.
- C. They provide services only to Tier 1 service providers.
- D. They can be either public or private.

Answer: C ([LEAVE A REPLY](#))

NEW QUESTION: 35

What class of attribute is Originator_ID?

- A. Well-known mandatory.
- B. Well-known discretionary.
- C. Optional transitive.
- D. Optional non-transitive.

Answer: ([SHOW ANSWER](#))

NEW QUESTION: 36

Which of the following about VPRNs is TRUE?

- A. Customers belonging to the same VPRN service must use the same subnet.
- B. Service providers only need to perform configurations on the PEs to add additional VPRNs.
- C. For each VPRN, only one customer can be connected at each PE.
- D. Customers must use the same routing protocol as the service provider.

Answer: ([SHOW ANSWER](#))

NEW QUESTION: 37

Click on the exhibit.



```
*A:SRC_R3# oam lsp-ping prefix 192.10.1.2/32
LSP-PING 192.10.1.2/32: 80 bytes MPLS payload
Seq=1, send from intf toR1, reply from 10.10.10.2
  udp-data-len=32 ttl=255 rtt=2.45ms rc=3 (EgressRtr)

---- LSP 192.10.1.2/32 PING Statistics ----
1 packets sent, 1 packets received, 0.00% packet loss
round-trip min = 2.45ms, avg = 2.45ms, max = 2.45ms, stddev = 0.000ms
*A:SRC_R3#
```

Which of the following is FALSE?

- A. The router can reach prefix 192.10.1.2/32 through a RSVP-TE tunnel.
- B. The lsp-ping tool is used to perform a unidirectional LSP test.
- C. The router can reach prefix 192.10.1.2/32 through an LDP tunnel.
- D. The router 10.10.10.2 is the egress router of the prefix 192.10.1.2/32.

Answer: A ([LEAVE A REPLY](#))

NEW QUESTION: 38

Which of the following regarding per-platform label space is TRUE?

- A. A separate label is used for each interface on which the FEC is advertised.
- B. A single label is assigned to a FEC for all interfaces on the same router.
- C. It is typically used when the device has ATM or Frame Relay interfaces.
- D. It uses more label resources than a per-interface label space.

Answer: B ([LEAVE A REPLY](#))

NEW QUESTION: 39

Which of the following statements best describes the function of an OSPF Type 4 LSA?

- A. A Type 4 LSA is originated by an ABR that is connected to a stub area. The LSA is injected into the backbone area to provide routing information.
- B. A Type 4 LSA is originated by an ABR that is connected to a stub area. The LSA is injected into the stub area to provide routing information.
- C. A Type 4 LSA is originated by an ASBR to describe a route to itself to routers outside the area.

D. A Type 4 LSA is originated by an ABR to describe a route to an ASBR to routers outside the area.

Answer: D ([LEAVE A REPLY](#))

NEW QUESTION: 40

Click the exhibit.

```
R4# show router ldp bindings
<...output omitted...>
=====
LDP Service FEC 128 Bindings
=====
Type      VCId      SvcId      SDPId      Peer          IngLbl  EgrLbl  LMTU  RMTU
-----
V-Eth    333       333        1          10.10.10.1   131061U  --      1500  0
V-Eth    333       333        2          10.10.10.2   131064U  131068  1500  1500
V-Eth    333       333        3          10.10.10.3   131063U  131063  1500  1500
-----
No. of VC Labels: 3
=====
```

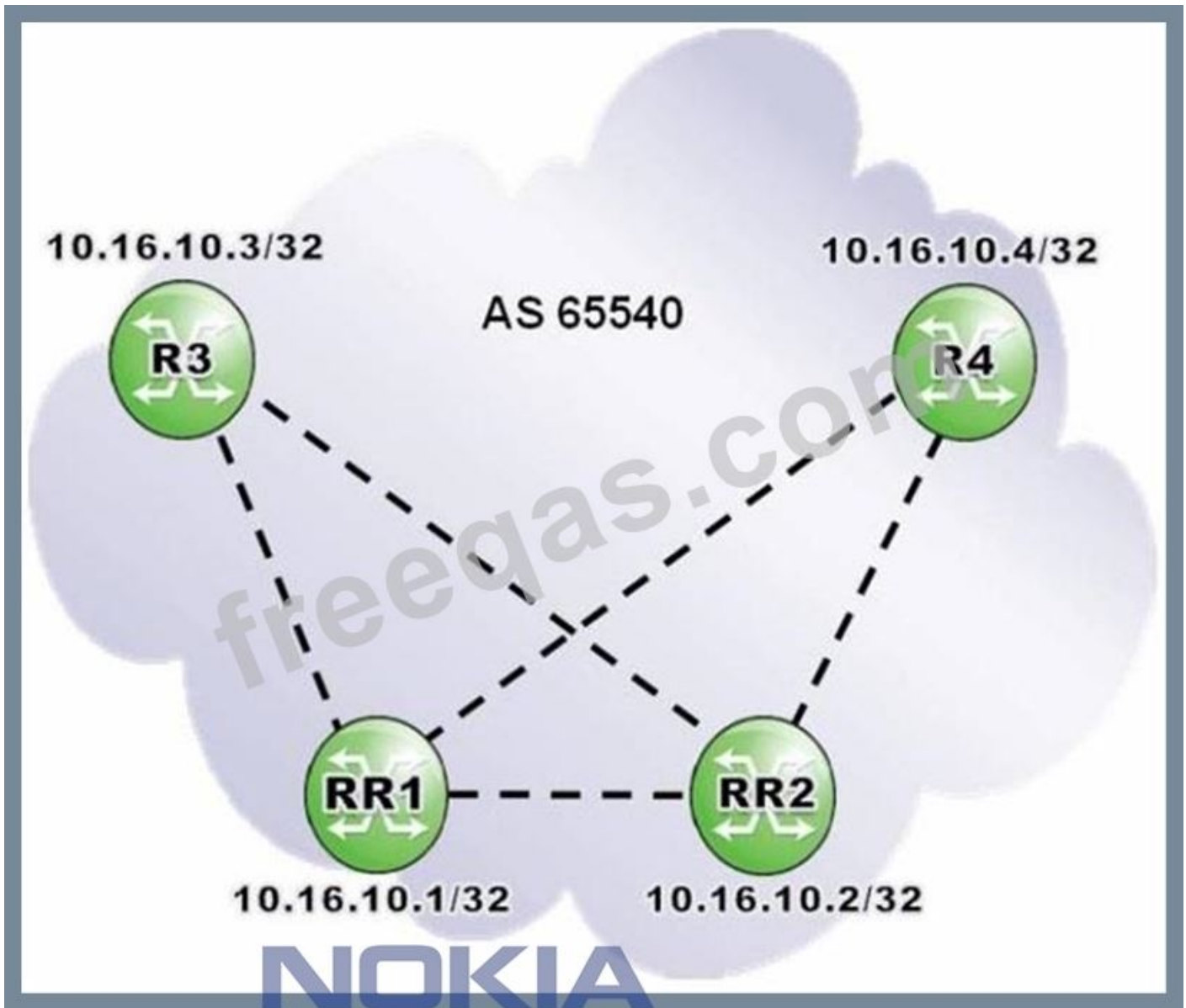
This is output from router R4. Service 333 is a VPLS. Why does peer 10.10.10.1 not have an EgrLbl?

- A. 10.10.10.1 has not sent a label to router R4 yet.
- B. The SDP to 10.10.10.1 on router R4 is shutdown.
- C. 10.10.10.1 has a different service MTU set.
- D. Router R4 has not sent a label to router R1 (10.10.10.1) yet.

Answer: A ([LEAVE A REPLY](#))

NEW QUESTION: 41

Click the exhibit.



Routers RR1 and RR2 are redundant route reflectors for clients R3 and R4. Which of the following is a valid configuration on router RR1?

A. RR1>config>router>bgp# info

```
-----  
group "AS 65540 iBGP"  
  cluster 10.16.10.1  
  peer-as 65540  
  neighbor 10.16.10.2  
  exit  
  neighbor 10.16.10.3  
  exit  
  neighbor 10.16.10.4  
  exit
```

B. RR1>config>router>bgp# info

```
-----  
group "AS 65540 iBGP"  
  peer-as 65540  
  neighbor 10.16.10.2  
    cluster 10.16.10.2  
  exit  
  neighbor 10.16.10.3  
    cluster 10.16.10.1  
  exit  
  neighbor 10.16.10.4  
    cluster 10.16.10.1  
  exit  
  exit
```

C. RR1>config>router>bgp# info

```
-----  
group "AS 65540 iBGP"  
  peer-as 65540  
  neighbor 10.16.10.2  
  exit  
  neighbor 10.16.10.3  
    cluster 10.16.10.1  
  exit  
  neighbor 10.16.10.4  
    cluster 10.16.10.1  
  exit  
  exit
```

D. RR1>config>router>bgp# info

```
-----  
group "AS 65540 iBGP"  
  peer-as 65540  
  neighbor 10.16.10.3  
    cluster 10.16.10.1  
  exit  
  neighbor 10.16.10.4  
    cluster 10.16.10.1  
  exit  
  exit
```

A. Option D

B. Option C

C. Option A

D. Option B

Answer: ([SHOW ANSWER](#))

NOKIA

NEW QUESTION: 42

Click the exhibit button.

```
*A:R1# show router ospf neighbor
-----
OSPF Neighbors
-----
Interface-Name      Rtr Id      State      Pri RetxQ  TTL
-----
toR2                10.10.10.2  Full      1  0    39
toR3                10.10.10.3  Full      1  0    31
toR5                10.10.10.5  Full      1  0    39
-----
No. of Neighbors: 3
-----
*A:R1#
```

The following command sequence is executed on router R2:

* A: R2# configure router ospf router-id 10.10.10.99

* A: R2# configure router router-id 10.10.10.66

On router R1, what router ID appears for router R2 directly after these commands are executed?

- A. 10.10.10.66
- B. 10.10.10.2
- C. 10.10.10.1
- D. 10.10.10.99

Answer: B (LEAVE A REPLY)

NEW QUESTION: 43

What happens by default on an Nokia 7750 SR when a null encapsulated SAP receives a frame with a VLAN tag?

- A. The original VLAN tag is kept.
- B. The original VLAN tag is removed.
- C. The VLAN tag is replaced by a provider tag.
- D. The VLAN tag is kept and a provider tag is added.

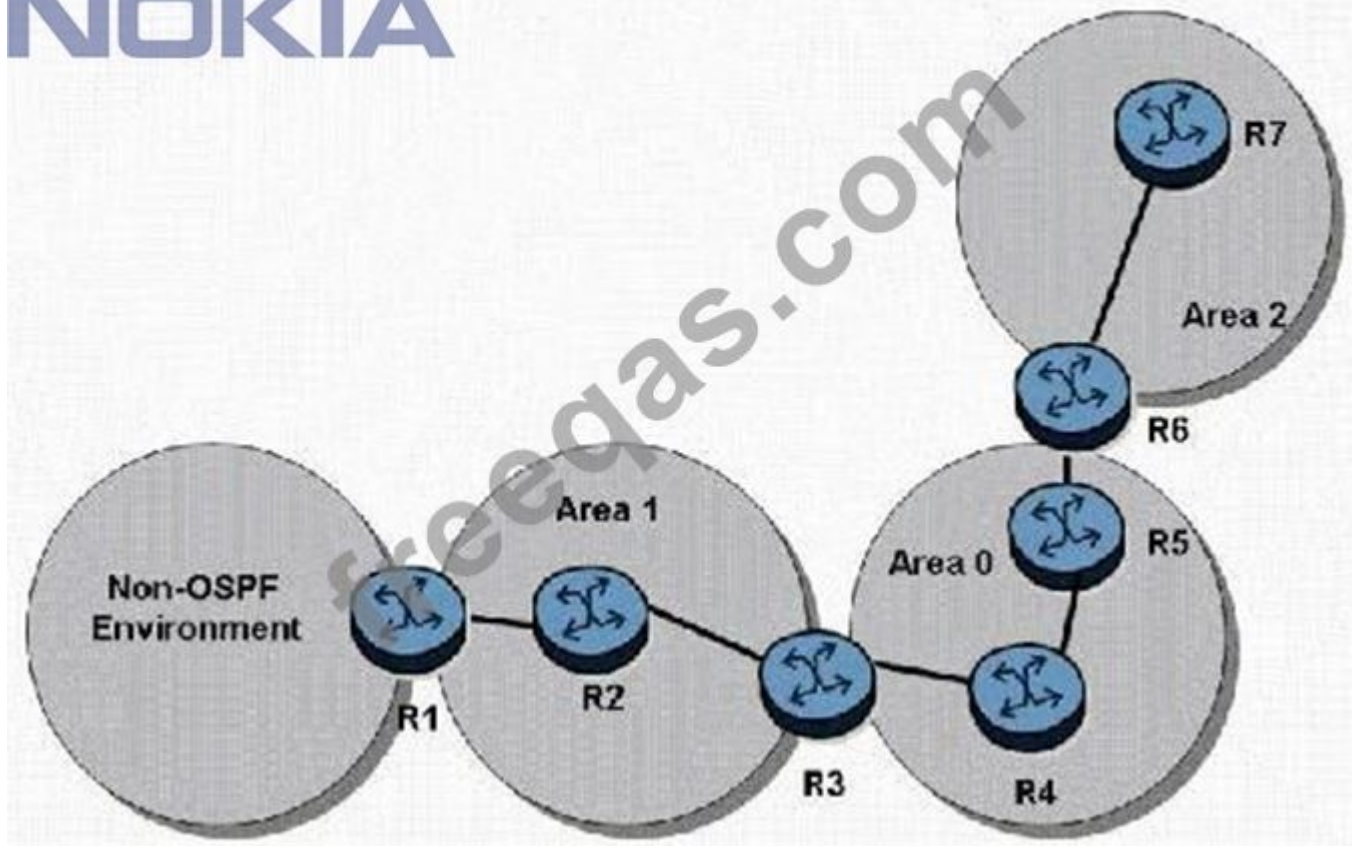
Answer: A (LEAVE A REPLY)

NEW QUESTION: 44

Click the exhibit button.

Exhibit 4.5.g

NOKIA



In the topology shown, router R1 is an ASBR configured to export external routes to OSPF. Assuming that there are no stub networks, which of the following statements regarding type 4 LSA generation is true?

- A. Router R3 generates a type 4 LSA that is flooded to areas 0 and 2.
- B. Router R3 generates a type 4 LSA that is flooded to areas 0, 1, and 2.
- C. Router R1 generates a type 4 LSA that is flooded to areas 0, 1, and 2.
- D. Router R3 generates a type 4 LSA that is flooded to area 0, and router R6 generates a type 4 LSA that is flooded to area 2.

Answer: D ([LEAVE A REPLY](#))

NEW QUESTION: 45

Click the exhibit.

```

R1# show router 100 fib 1
-----
FIB Display
-----
Prefix                                Protocol
  NextHop
-----
10.1.5.0/24                            LOCAL
   10.1.5.0 (R1-R5)
10.6.4.0/24                            BGP_VPN
   10.10.10.4 (VPRN Label:131065 Transport:LDP)
10.10.10.5/32                          BGP
   10.1.5.5 Indirect (R1-R5)
10.10.10.6/32                          BGP_VPN
   10.10.10.4 (VPRN Label:131065 Transport:LDP)
192.168.10.0/24                        BGP
   10.1.5.5 Indirect (R1-R5)
192.168.20.0/24                        BGP_VPN
   10.10.10.4 (VPRN Label:131065 Transport:LDP)
-----
Total Entries : 6

```

Based on this output from PE router R1, how many other PEs are participating in the VPRN?

- A. 2
- B. 1
- C. 3
- D. 0

Answer: B ([LEAVE A REPLY](#))

NEW QUESTION: 46

An OSPF adjacency is stuck in the exstart state. What is the most likely cause?

- A. OSPF is not enabled on one of the routers.
- B. The interfaces are configured as point-to-point on one side and broadcast on the other.
- C. The router ID is the same on both routers.
- D. An OSPF Hello has not been received from the neighbor.
- E. The MTU does not match on both interfaces.

Answer: E ([LEAVE A REPLY](#))

Valid 4A0-C04 Dumps shared by PrepPdf.com for Helping Passing 4A0-C04 Exam!

PrepPdf.com now offer the **newest 4A0-C04 exam dumps**, the PrepPdf.com 4A0-C04 exam **questions have been updated** and **answers have been corrected** get the **newest** PrepPdf.com 4A0-C04 dumps with Test Engine here: <https://www.preppdf.com/Nokia/4A0-C04-prepaway-exam-dumps.html> (300 Q&As Dumps, **40%OFF Special Discount: Exam-Tests**)

NEW QUESTION: 47

What is the default Nokia 7750 SR TTL of a BGP advertisement between confederation members?

- A. 32
- B. 255
- C. 1
- D. 64

Answer: C ([LEAVE A REPLY](#))

NEW QUESTION: 48

Click the exhibit button.



```
A:R1>config>router>ospf# info
-----
export "reject"
area 0.0.0.0
interface "toR2"
interface-type point-to-point
exit
exit
-----
A:R1>config>router>ospf#
```

```
*A:R1# show router policy prefix-list reject
prefix 192.168.0.0/16 longer
*A:R1#
*A:R1# show router policy reject
entry 10
from
prefix-list "reject"
exit
action reject
exit
default-action reject
*A:R1#
```

Router R2 advertises the network 192.168.3.0/24 to router R1 via OSPF. A route policy has been constructed to discard the route on router R1; however, it is not working. What is the problem?

- A. The policy "reject" should be set for import rather than export.
- B. The prefix list reject should be "192.168.3.0/16 exact".
- C. This is not possible because OSPF cannot use import policies.
- D. Router R1 should be configured as an OSPF "asbr".
- E. The policy was likely not "committed" after creation.

Answer: C ([LEAVE A REPLY](#))

NEW QUESTION: 49

From what range are 16-bit private AS numbers selected?

- A. There are no defined private AS numbers; there are only private IP addresses.
- B. 1 - 56319
- C. 64513-65535
- D. 64496 - 64511
- E. 64512-65534

Answer: ([SHOW ANSWER](#))

NEW QUESTION: 50

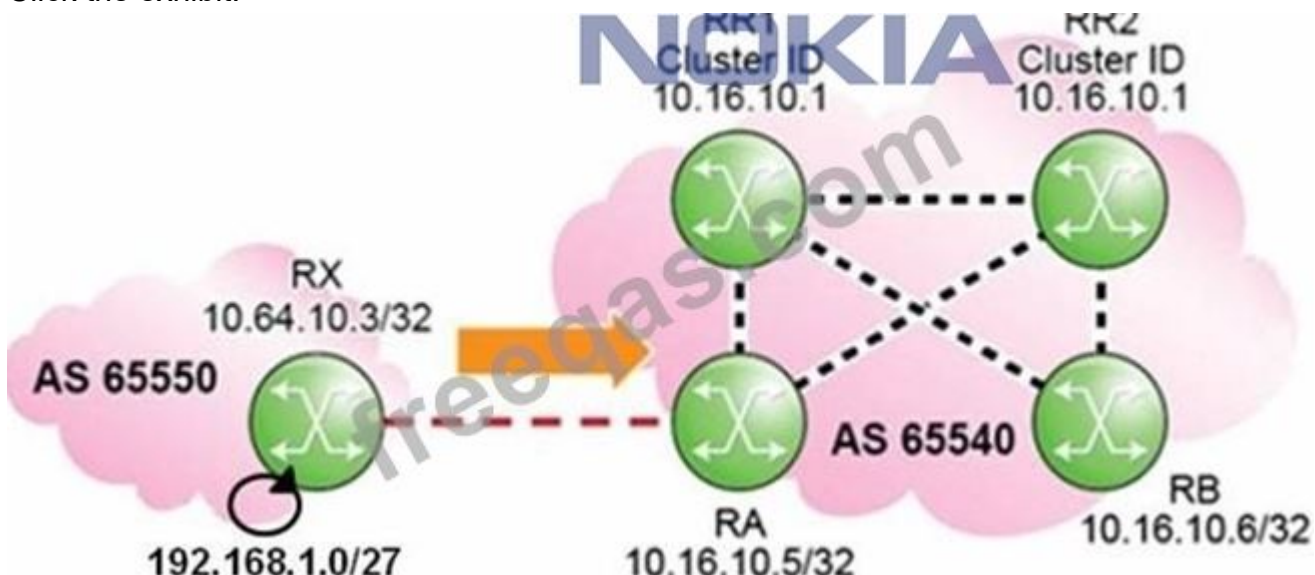
Static routing will be used in a network between a corporate head office, with many connected networks, and a branch office, with one connection to the head office. Which of the following best describes the likely configuration?

- A. The corporate head office router will have a default route and the branch site will have a more specific static route.
- B. The corporate head office router and the branch office router will both have specific static routes.
- C. The corporate head office router will have a more specific static route and the branch office router will have a default route.
- D. The corporate head office router and the branch router will both have default routes.

Answer: C ([LEAVE A REPLY](#))

NEW QUESTION: 51

Click the exhibit.



Routers RR1 and RR2 are route reflectors with the same Cluster-ID. How does router RA treat the updates for prefix 192.168.1.0/27 received from routers RR1 and RR2?

- A. Router RA prefers the update received from router RR1.
- B. Router RA flags both updates as invalid.
- C. Router RA accepts both updates and flags them as used.
- D. Router RA prefers the update received from router RR2.

Answer: B ([LEAVE A REPLY](#))

NEW QUESTION: 52

What kind of attribute is the aggregator?

- A. Optional non-transitive
- B. Optional transitive
- C. Well-known discretionary
- D. Well-known mandatory

Answer: (SHOW ANSWER)

NEW QUESTION: 53

Which of the following fields does NOT appear in the MPLS label header?

- A. Frame check sequence
- B. Time To live
- C. Label
- D. Bottom of stack bit
- E. Traffic Class (previously called Experimental)

Answer: A ([LEAVE A REPLY](#))

NEW QUESTION: 54

From the list below select the statements that describe the behavior of link state information aging. (Choose 2)

- A. The age for newly created link state information is set to 1200 for OSPF and 0 for IS-IS
- B. The age for newly created link state information is set to 0 for OSPF and 1200 for IS-IS
- C. The age is incremented or decremented only as it is held in the topological database and not as it is flooded router to router.
- D. The age is incremented or decremented as it is flooded from router to router and as it is held in the topological database.

Answer: B,D ([LEAVE A REPLY](#))

NEW QUESTION: 55

Which of the following statements regarding OSPF routing updates on a point-to-point link is true?

- A. On a point-to-point link, there is no need for a DR and BDR election. All routing updates are sent to the unicast address of the neighbor's interface.
- B. On a point-to-point link, a DR and BDR are elected. To ensure resiliency, both the DR and BDR send link-state advertisements describing the network.
- C. On a point-to-point link, a DR and BDR are elected. The DR sends link-state advertisements describing the network.
- D. On a point-to-point link, there is no need for a DR and BDR election; all routing updates are sent to 224.0.0.5.

Answer: (SHOW ANSWER)

NEW QUESTION: 56

Click the exhibit button.



The OSPF adjacency between routers R3 and R1 is down. What is the problem?

- A. Router R1 has the incorrect authentication key type.
- B. There is not enough information to tell.
- C. Area 1 of router R1 should not be configured as a stub.
- D. Router R3 has the incorrect authentication key type.

Answer: ([SHOW ANSWER](#))

NEW QUESTION: 57

Which of the following about LSP path configuration on an Nokia 7750 SR is TRUE?

- A. The path must define a tunnel destination IP address.
- B. The path must include at least one hop.

- C. The path may be used multiple times in a single LSP.
- D. The path may be used for multiple LSPs.

Answer: D ([LEAVE A REPLY](#))

NEW QUESTION: 58

What are the ways the RID can be created on an Nokia 7750 SR router? (Choose three)

- A. By using the command "config router ospf rid X.X.X.X"
- B. The loopback IP address
- C. From the last 32 bits of the chassis MAC address
- D. From the system IP address
- E. From the highest interface IP address
- F. From the first 32 bits of the chassis MAC address

Answer: A,C,D ([LEAVE A REPLY](#))

NEW QUESTION: 59

How many service labels must be signaled to bring up a fully-meshed VPLS among three PE routers?

- A. 1
- B. 3
- C. 6
- D. 12

Answer: ([SHOW ANSWER](#))

NEW QUESTION: 60

Which of the following best describes downstream on demand label distribution?

- A. An LSR propagates a label mapping downstream for a FEC. only if it has a label mapping for the FEC's next-hop.
- B. An LSR distributes a label mapping for a FEC when it has been requested to do so.
- C. An LSR advertises label mappings to all peers for which it might be a next-hop for a given FEC.
- D. An LSR answers requests for label mappings immediately, without waiting for a label mapping from the next-hop.

Answer: B ([LEAVE A REPLY](#))

NEW QUESTION: 61

Which of the following about LDP sessions is TRUE?

- A. Frame mode requires multiple sessions between peers.
- B. The lower transport address initiates the session.
- C. Established LDP sessions run over a TCP connection.
- D. An LDP session is established immediately after Init messages are exchanged between peers.

Answer: ([SHOW ANSWER](#))

Valid **4A0-C04 Dumps** shared by PrepPdf.com for Helping Passing 4A0-C04 Exam! PrepPdf.com now offer the **newest 4A0-C04 exam dumps**, the PrepPdf.com 4A0-C04 exam **questions have been updated** and **answers have been corrected** get the **newest** PrepPdf.com 4A0-C04 dumps with Test Engine here: <https://www.preppdf.com/Nokia/4A0-C04-prepaway-exam-dumps.html> (300 Q&As Dumps, **40%OFF Special Discount: Exam-Tests**)

NEW QUESTION: 62

What are the default Hello and Dead timer intervals for OSPF on the Nokia 7750 SR?

- A. 5 and 20 seconds
- B. 10 and 30 seconds
- C. 5 and 15 seconds
- D. 10 and 40 seconds

Answer: D ([LEAVE A REPLY](#))

NEW QUESTION: 63

Click the exhibit.



Assume all router-IDs are properly configured, and IPv6 link-local addresses are used to establish all eBGP sessions. Given the following iBGP configuration on router A, what is the Next Hop for prefix

2001:DB8:A:401::1/128 on router B?

```

group "IPv6_iBGP"
  family ipv6
  peer-as 65540
  neighbor 2001:DB8:2::2
  exit
  neighbor 2001:DB8:3::3
  exit
exit

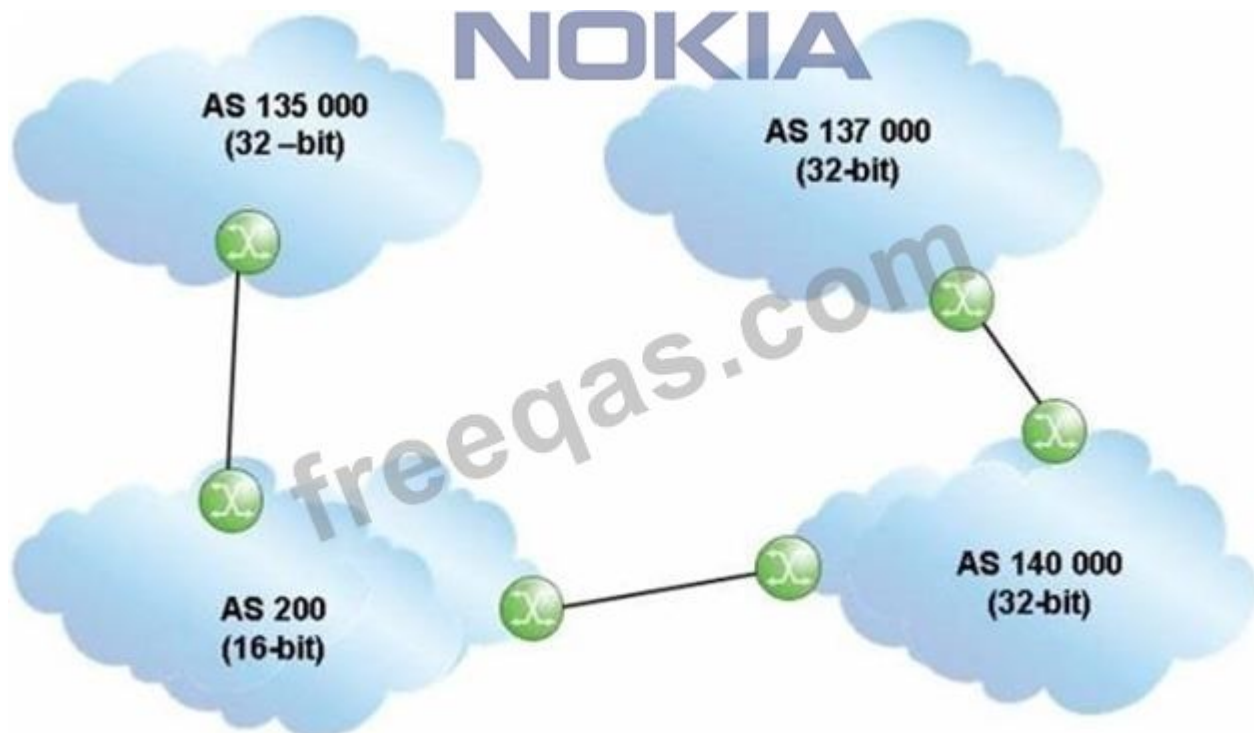
```

- A. The IPv6 link-local address of the router A interface towards router D.
- B. The IPv6 link-local address of the router D interface towards router A.
- C. The IPv6 global address of router D.
- D. The IPv6 global address of router A.

Answer: D ([LEAVE A REPLY](#))

NEW QUESTION: 64

Click the exhibit.



An update travels from AS 137000 to AS 135000, traversing both 32-bit and 16-bit AS Paths. What AS Path is seen by AS 200?

- A. 137000 140000
- B. 140000 137000
- C. 200 140000 137000
- D. 23456 23456

Answer: ([SHOW ANSWER](#))

NEW QUESTION: 65

In a Layer 2 encapsulation using T-LDP, what does the second (bottom) label represent?

- A. VC Label
- B. Operational Control Word
- C. Tunnel Label
- D. VPI
- E. VCI

Answer: A ([LEAVE A REPLY](#))

NEW QUESTION: 66

Which of the following about route distinguishes on the Nokia 7750 SR is TRUE?

- A. CE routers use a route distinguisher to indicate which VPRN they are associated to.
- B. A route distinguisher combined with an IPv4 prefix produces a VPN-IPv4 prefix.
- C. Route distinguishes are used to determine which routes a VPRN should import.
- D. Route distinguishes are appended to IPv4 prefixes to form IPv6 prefixes.

Answer: B ([LEAVE A REPLY](#))

NEW QUESTION: 67

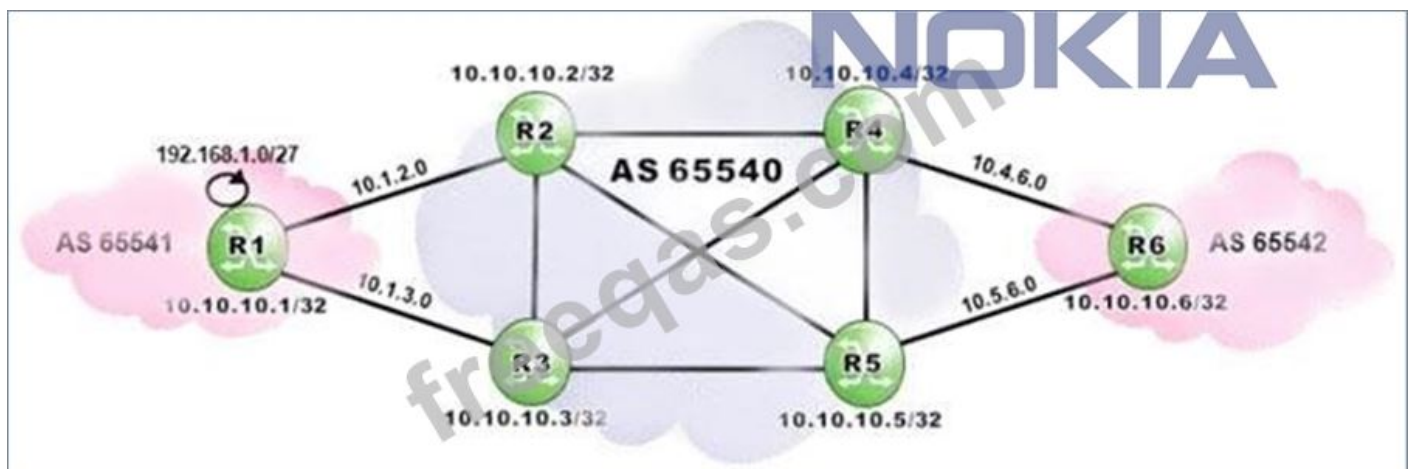
Which of the following statements concerning OSPFv3 is false?

- A. NSSA is not supported in OSPFv3.
- B. MD5 Authentication is not supported.
- C. Router LSAs do not carry IPv6 prefix information
- D. OSPFv3 uses a 32-bit router ID.

Answer: A ([LEAVE A REPLY](#))

NEW QUESTION: 68

Click the exhibit.



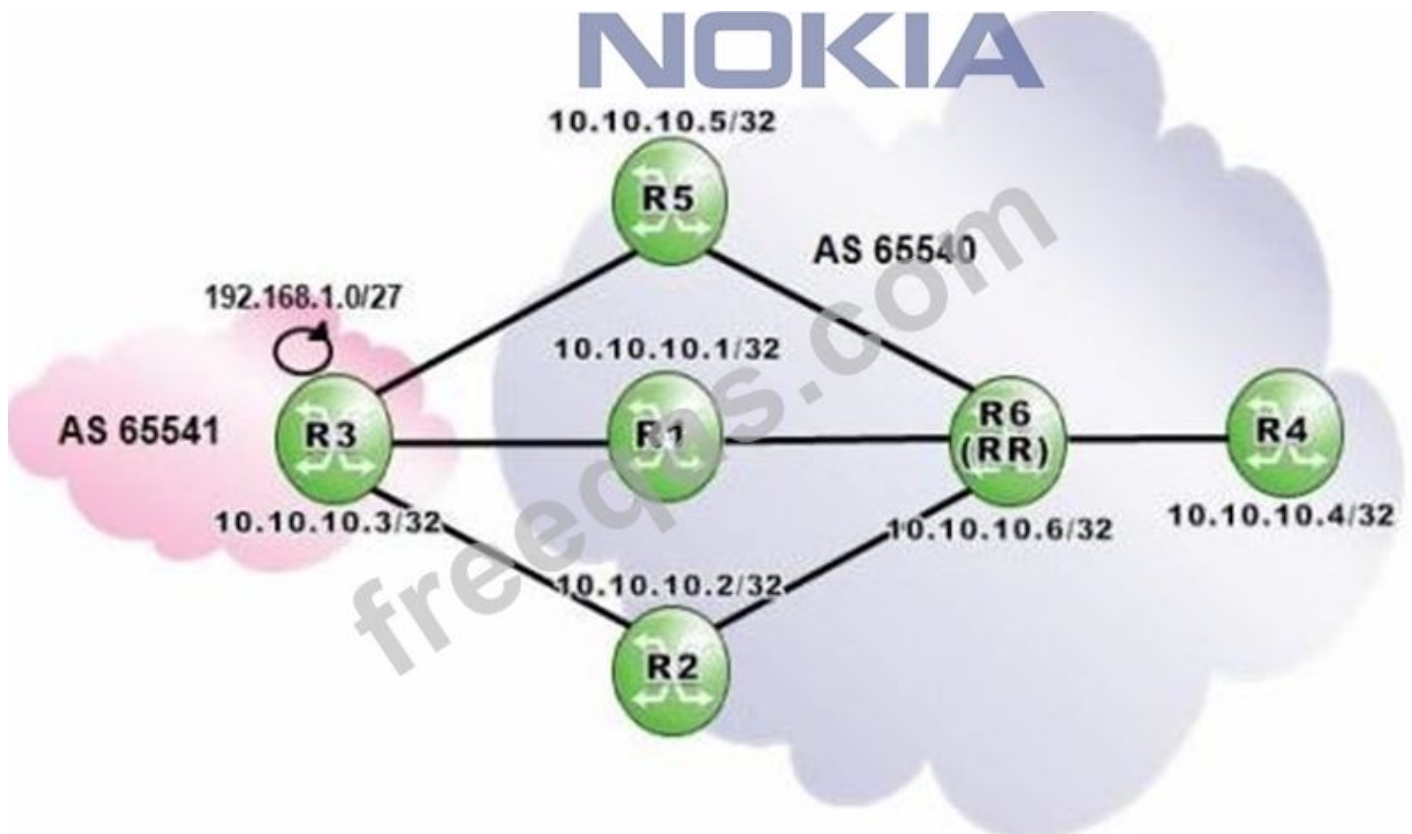
AS 65540 routers are iBGP fully-meshed. Assume routers R4, R5 and R6 are configured with `addpaths ipv4 send 2 receive`. Which routes to 192.168.0.1/27 is router R6 expected to have in its BGP routing table?

- A. Two routes from router R5.
- B. Two routes from router R4.
- C. Four routes; two from router R4 and two from router R5.
- D. Two routes; one from router R4 and one from router R5.

Answer: C ([LEAVE A REPLY](#))

NEW QUESTION: 69

Click the exhibit.



Router R6 is a route reflector with clients R1, R2, R4 and R5. Router R4 receives three routes from router R6 and is configured with ECMP 3. Given the following BGP configuration on router R4, how many primary and backup paths will be present in router R4's BGP routing table?

```
R4>config>router>bgp# info
```

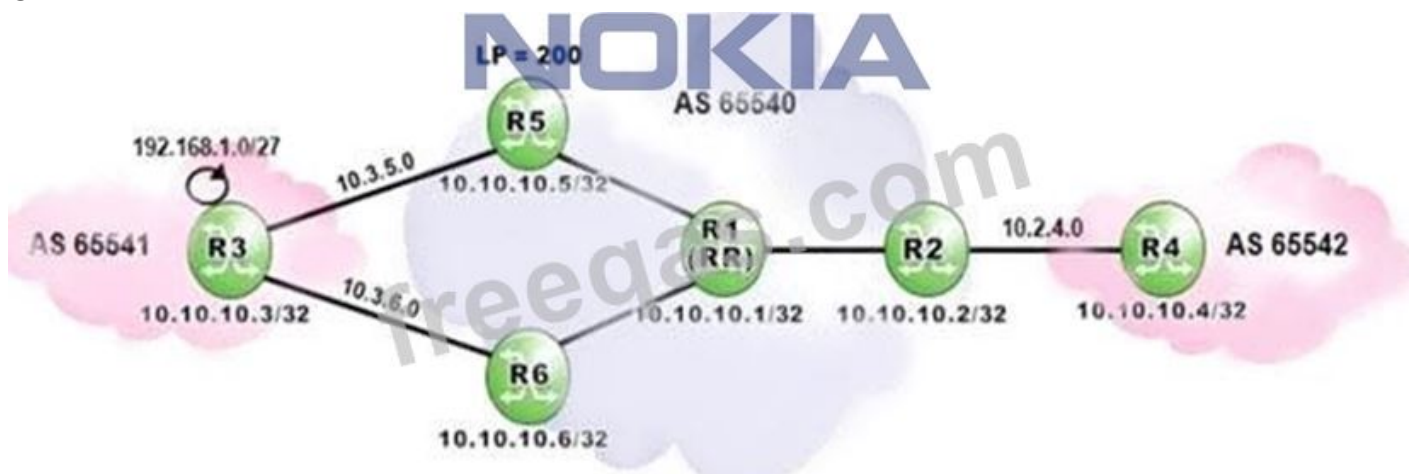
```
-----  
multipath 2  
add-paths  
  ipv4 send 3 receive  
exit  
backup-path ipv4  
group "IBGP"  
  peer-as 65540  
  neighbor 10.10.10.6  
exit  
exit
```

- A. Two primary paths and one backup path.
- B. One primary path and two backup paths.
- C. Three primary paths,
- D. One primary path and one backup path.

Answer: A ([LEAVE A REPLY](#))

NEW QUESTION: 70

Click the exhibit.



Router R1 is a route reflector with clients R2, R5 and R6. Prefixes advertised by router R5 have a local preference of 200. Router R3 advertises the prefix 192.168.1.0/27 to routers R5 and R6. Assuming that none of the routers in AS 65540 is configured with "advertise-external", what is the expected output of "show router bgp routes on router R1?"

A. Flag Network		LocalPref	MED
Nexthop	As-Path	Path-Id	VPNLabel

u*>i	192.168.1.0/27	200	None
	10.3.5.3	None	-
	65541		

B. Flag Network		LocalPref	MED
Nexthop	As-Path	Path-Id	VPNLabel

u*>i	192.168.1.0/27	None	None
	10.3.5.3	None	-
	65541		
i	192.168.1.0/27	200	None
	10.10.10.5	None	-
	65541		
i	192.168.1.0/27	100	None
	10.10.10.6	None	-
	65541		

C. Flag Network		LocalPref	MED
Nexthop	As-Path	Path-Id	VPNLabel

u*>i	192.168.1.0/27	None	None
	10.3.5.3	None	-
	65541		
i	192.168.1.0/27	200	None
	10.10.10.5	None	-
	65541		

D. Flag Network		LocalPref	MED
Nexthop	As-Path	Path-Id	VPNLabel

u*>i	192.168.1.0/27	200	None
	10.10.10.5	None	-
	65541		
i	192.168.1.0/27	100	None
	10.10.0.6	None	-
	65541		

- A. Option C
- B. Option B
- C. Option A
- D. Option D

Answer: A ([LEAVE A REPLY](#))

NEW QUESTION: 71

Which of the following is TRUE if the local state of BGP is OpenConfirm?

- A. The local system is exchanging Update messages with its neighbor.
- B. The local system has sent a Keepalive message to its neighbor and is waiting to receive one back.
- C. The local system has sent an Open message to its neighbor and is waiting to receive one back.
- D. The local system has received a Keepalive message and is ready to exchange updates.

Answer: B ([LEAVE A REPLY](#))

NEW QUESTION: 72

Which of the following about an ERO in an RSVP PATH message is FALSE?

- A. ERO is not always present in the PATH message.
- B. ERO contains label information used to signal an LSP path.
- C. ERO is used by downstream routers to determine the next-hop for the LSP.
- D. Each downstream router updates information inside the ERO.

Answer: ([SHOW ANSWER](#))

NEW QUESTION: 73

Which of the following regarding label population is TRUE?

- A. Selected labels from the FIB are populated to the LFIB.
- B. Selected labels from the RIB are populated to the FIB.
- C. Selected labels from the LIB are populated to the LFIB.
- D. Selected labels from the LIB are populated to the FIB.

Answer: C ([LEAVE A REPLY](#))

NEW QUESTION: 74

Which of the following regarding route reflectors is TRUE?

- A. Clients should have iBGP sessions with each other to maintain the mesh.
- B. Only the route reflector is configured with a cluster id.
- C. There can only be one level of route reflectors in the topology.
- D. There can only be one route reflector in a cluster.

Answer: B ([LEAVE A REPLY](#))

NEW QUESTION: 75

Initially, all ports on an Nokia 7750 SR have 10Gbps bandwidth. RSVP configuration limits reservable bandwidth to 30 percent on all interfaces. An LSP is signaled reserving 1 Gbps bandwidth. How much unreserved bandwidth is left on the interface?

- A. 2 Gbps

- B. 7 Gbps
- C. 10 Gbps
- D. 3 Gbps

Answer: A ([LEAVE A REPLY](#))

NEW QUESTION: 76

Click on the exhibit.

```
configure router policy-options
  begin
  prefix-list "officeA_subnet"
    prefix 192.168.1.0/24 longer
  exit
  policy-statement "LDP_export"
    entry 10
      from
        protocol direct
        prefix-list "officeA_subnet"
      exit
      action accept
    exit
  exit
exit
commit
```

This policy is applied on a router as an LDP export policy and an LDP session has been established between this router and its neighboring router. In addition to the FECs learned from its neighbors, what additional FECs will appear in this router's LIB?

- A. All FECs that are not in the 192.168.1.0/24 address space.
- B. All FECs except the local FECs that are in the 192.168.1.0/24 address space.
- C. All FECs that are in the 192.168.1.0/24 address space.
- D. Local FECs that are in the 192.168.1.0/24 address space.

Answer: D ([LEAVE A REPLY](#))

Valid 4A0-C04 Dumps shared by PrepPdf.com for Helping Passing 4A0-C04 Exam!

PrepPdf.com now offer the **newest 4A0-C04 exam dumps**, the PrepPdf.com 4A0-C04 exam **questions have been updated** and **answers have been corrected** get the **newest** PrepPdf.com 4A0-C04 dumps with Test Engine here: <https://www.preppdf.com/Nokia/4A0->

NEW QUESTION: 77

Which of the following about Fast Reroute link protection tunnels is FALSE?

- A. Link protection tunnels are established if a router is unable to establish node protection tunnels.
- B. Link protection tunnels detour around a failed next downstream router.
- C. Link protection tunnels are only requested for a primary LSP path.
- D. Link protection tunnels can be created for both one-to-one or facility Fast Reroute.

Answer: B ([LEAVE A REPLY](#))

NEW QUESTION: 78

In an OSPF Hello packet, which of the following fields must match for all neighbor routers on the segment?

Choose three answers.

- A. Checksum values
- B. Area ID W B.
- C. Hello and Dead intervals PC.
- D. Stub flag
- E. The list of neighbors

Answer: B,C,D ([LEAVE A REPLY](#))

NEW QUESTION: 79

Which of the following about the components of a distributed service on the Nokia 7750 SR is TRUE?

```
NI>config>services info
-----
customer 1 create
  description "Default customer"
exit
customer 100 create
  description "Cust 100"
exit
sdp 2 mpls create
  far-end 10.10.10.2
  ldp
  keep-alive
  shutdown
exit
no shutdown
exit
epipe 12 customer 100 create
  sap 1/1/1:30 create
  exit
  spoke-sdp 2:44 create
  no shutdown
  exit
  no shutdown
  exit
-----
```

- A. A service is created on each site before the customer is created.

- B. A SAP can only be used by one service on a router.
- C. SAPs must be created before a service is created.
- D. A dedicated SDP needs to be created for each service.

Answer: B ([LEAVE A REPLY](#))

NEW QUESTION: 80

A static route is created using the command "static-route 0.0.0.0/0 next-hop 3.3.3.1". What command could be used to test the static route on an Nokia 7750 SR?

- A. Ping static 0.0.0.0/0
- B. Ping static 3.3.3.1
- C. Ping 0.0.0.0
- D. Ping 3.3.3.1

Answer: D ([LEAVE A REPLY](#))

NEW QUESTION: 81

What causes an adjacency to change from down to two ways?

- A. When a link state acknowledgement is received in response to a link state update.
- B. When a router receives a database description packet from a neighbor.
- C. When a router receives a Hello packet that contains its own router ID in the neighbor list from a neighbor.
- D. When a link state update is received in response to a link state request.

Answer: C ([LEAVE A REPLY](#))

NEW QUESTION: 82

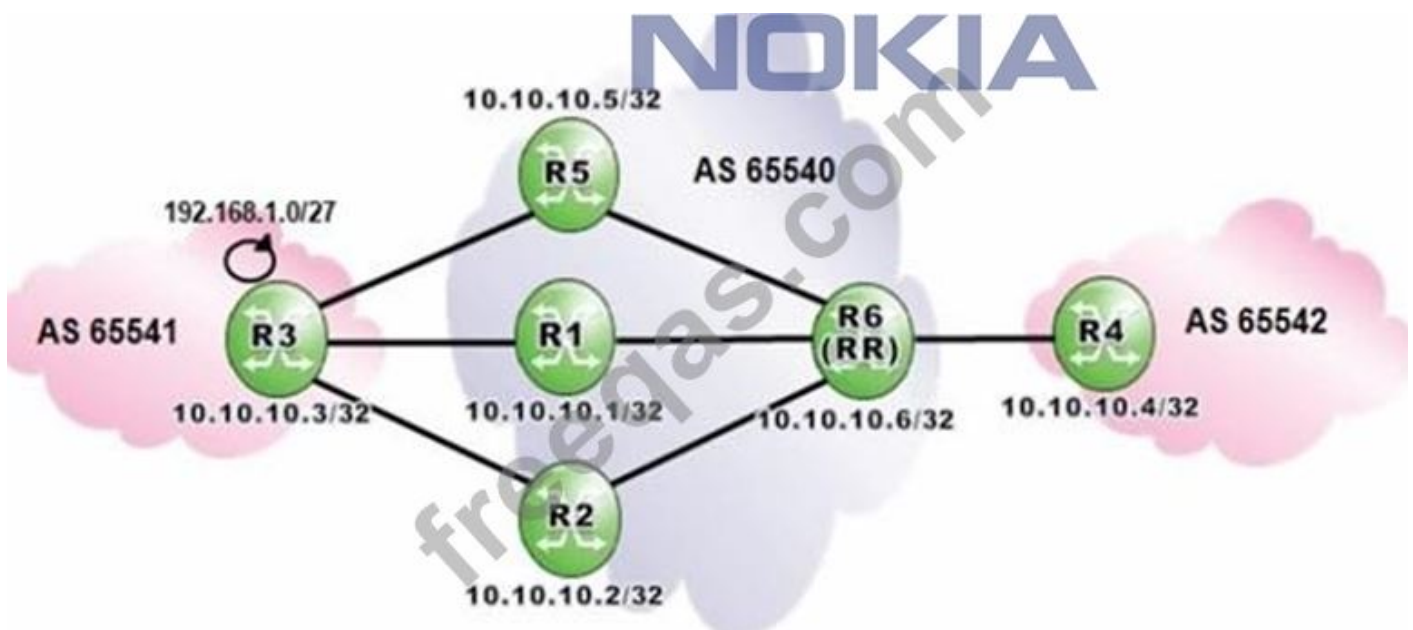
Which of the following statements about SAPs that are part of a VPVVS is FALSE?

- A. SAPs can be defined on Ethernet, POS, Sonet/SDH, or TDM channels.
- B. SAPs can have QoS policies assigned to them.
- C. Multiple SAPs can be defined on the same port.
- D. Only one SAP is required for a service that originates and terminates on the same Nokia 7750 SR.

Answer: ([SHOW ANSWER](#))

NEW QUESTION: 83

Click the exhibit.



Router R6 is a route reflector with clients R1, R2 and R5. Router R3 advertises the prefix 192.168.1.0/27 to routers R1, R2 and R5. How many routes for prefix 192.168.1.0/27 will router R6 receive?

- A. 2
- B. 1
- C. 3
- D. None

Answer: ([SHOW ANSWER](#))

NEW QUESTION: 84

Click the exhibit.



When router A receives the BGP update for the 192.168.0.1/27 prefix, it propagates it to routers B and C.

What action is taken by router B when it receives the update?

- A. Router B propagates the BGP update to router D.
- B. Router B propagates the BGP update to routers D and C.
- C. Router B detects duplicates in its BGP database and discards the update.
- D. Router B propagates the update to routers A, C and D.

Answer: ([SHOW ANSWER](#))

NEW QUESTION: 85

Which of the following about RSVP-TE summary refresh messages is TRUE?

- A. They list the Tunnel IDs that the router is refreshing.
- B. They list the RSVP session names that the router is refreshing,
- C. They list the Message IDs that the router is refreshing,
- D. They list the LSP I Ds that the router is refreshing.

Answer: C ([LEAVE A REPLY](#))

NEW QUESTION: 86

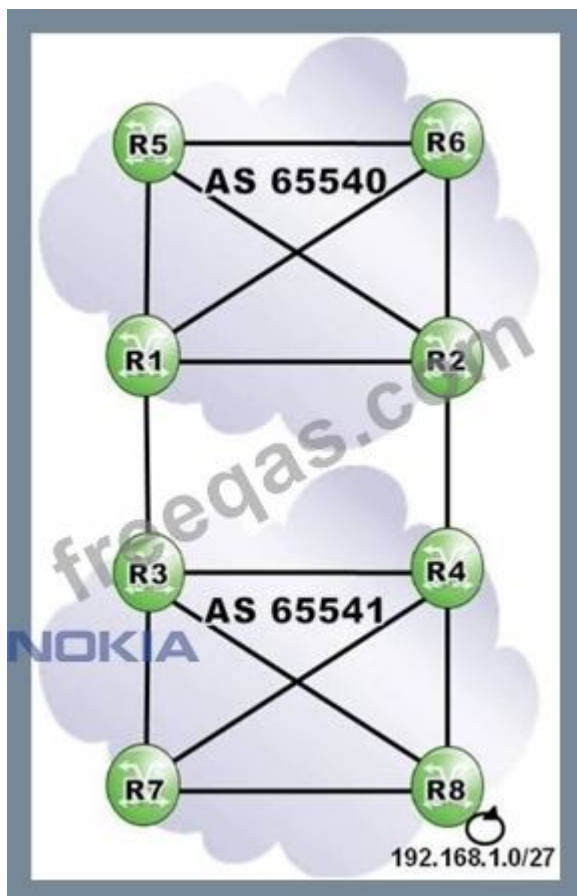
Which of the following about VPRN VRF tables is FALSE?

- A. Information for VRFs can be advertised between PEs by MP-BGP.
- B. A PE uses a VRF to route traffic to CEs.
- C. A PE uses a VRF to maintain forwarding information.
- D. A PE uses the same VRF table for all the VPRN services on it.

Answer: D ([LEAVE A REPLY](#))

NEW QUESTION: 87

Click the exhibit.



Router R2 receives a route to 192.168.1.0/27 from router R4, and sets the local preference to 110. Router R1 receives a route to 192.168.1.0/27 from router R3, and sets the local preference

to 80. Both ASs have a full iBGP mesh. What path does traffic destined to 192.168.1.0/27 take from router R1?

- A. R1-R3-R4-R8
- B. R1-R3-R8
- C. R1-R2-R4-R3-R8
- D. R1-R2-R4-R8

Answer: ([SHOW ANSWER](#))

NEW QUESTION: 88

Which of the following statements describe the major features of OSPF? Choose two answers.

- A. Route redistribution
- B. Traffic engineering extensions
- C. Control traffic prioritization
- D. Cut through forwarding
- E. Fast reroute capability

Answer: ([SHOW ANSWER](#))

NEW QUESTION: 89

Which of the following statements regarding OSPF routing updates on a multi-access network segment is true?

- A. In multi-access networks, a DR and BDR are elected only if the subnet masks on the router interfaces are less than /30
- B. In multi-access networks, a DR and BDR are elected only if there are more than two routers connected to the network segment.
- C. In multi-access networks, a DR and BDR are elected. The DR sends link-state advertisements describing the network.
- D. In multi-access networks, a DR and BDR are elected. To ensure resiliency, both the DR and BDR send link-state advertisements describing the network.

Answer: C ([LEAVE A REPLY](#))

NEW QUESTION: 90

Which of the following correctly lists the 5 OSPF packet types?

- A. Hello, link state update, link state packet, link State acknowledgement, database description.
- B. Link state update, link state refresh, link state acknowledgement, database description, notification.
- C. Hello, link state refresh, link state update, link state acknowledgement, link state authentication.
- D. Hello, link state update, link state request, link state acknowledgement, database description.

Answer: D ([LEAVE A REPLY](#))

NEW QUESTION: 91

What labels are encapsulated in the tunnels used by a 6PE deployment?

- A. The inner label is the IPv4 Explicit Null. The outer label is the MPLS transport label.
- B. The inner label is an MPLS transport label. The outer label is the IPv6 Explicit Null.
- C. The inner label is an MPLS transport label. The outer label is the IPv4 Explicit Null.
- D. The inner label is the IPv6 Explicit Null. The outer label is an MPLS transport label.

Answer: D (LEAVE A REPLY)

Valid 4A0-C04 Dumps shared by PrepPdf.com for Helping Passing 4A0-C04 Exam! PrepPdf.com now offer the **newest 4A0-C04 exam dumps**, the PrepPdf.com 4A0-C04 exam **questions have been updated** and **answers have been corrected** get the **newest** PrepPdf.com 4A0-C04 dumps with Test Engine here: <https://www.preppdf.com/Nokia/4A0-C04-prepaway-exam-dumps.html> (300 Q&As Dumps, **40%OFF Special Discount: Exam-Tests**)

NEW QUESTION: 92

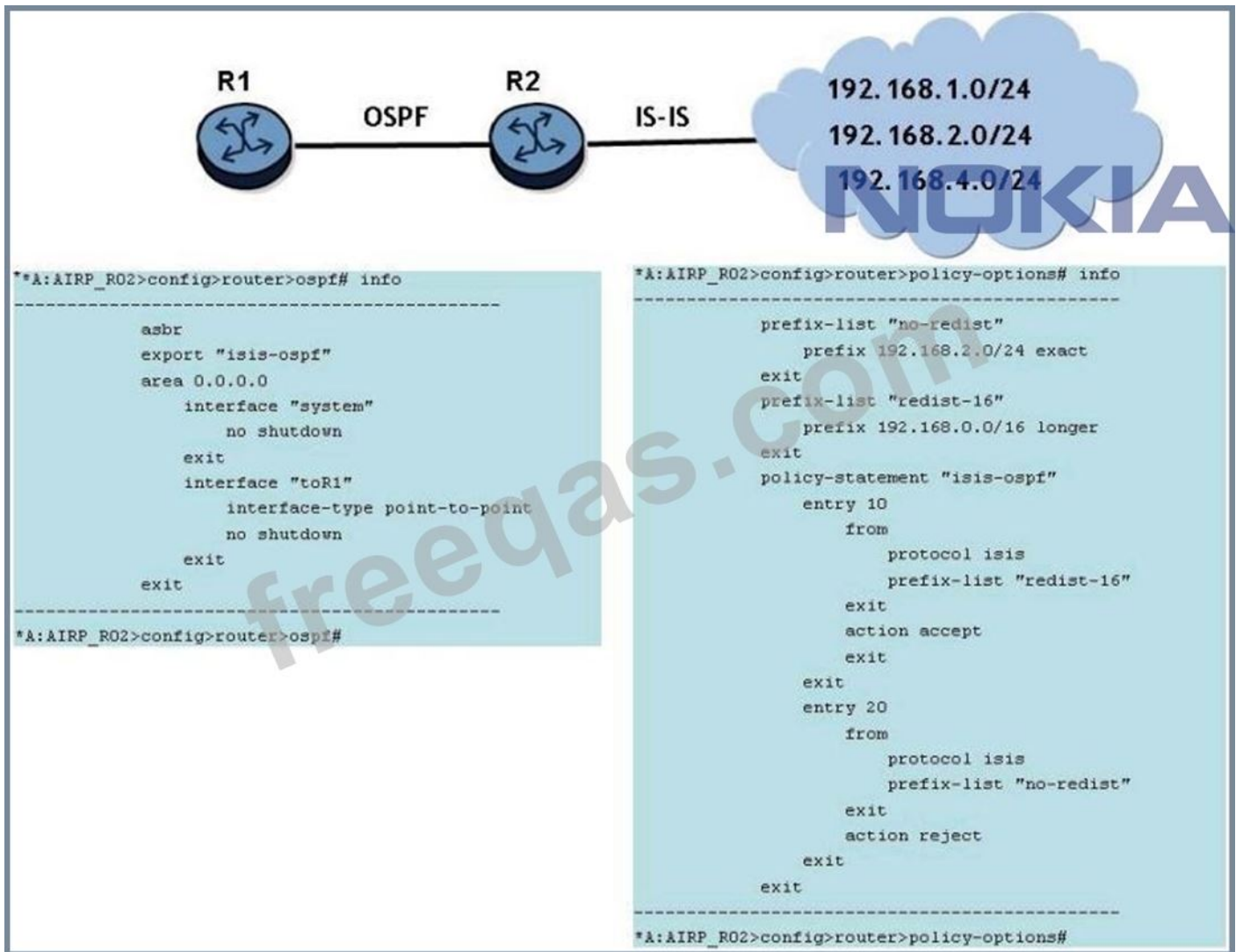
Which of the following about Type 10 opaque LSAs is TRUE?

- A. Type 10 opaque LSAs are flooded to all areas of the routing domain.
- B. Type 10 opaque LSAs are stored in an LSDB.
- C. Type 10 opaque LSAs are supported by IS-IS.
- D. Type 10 opaque LSAs are used for traffic engineering support.

Answer: D (LEAVE A REPLY)

NEW QUESTION: 93

Click on the exhibit.



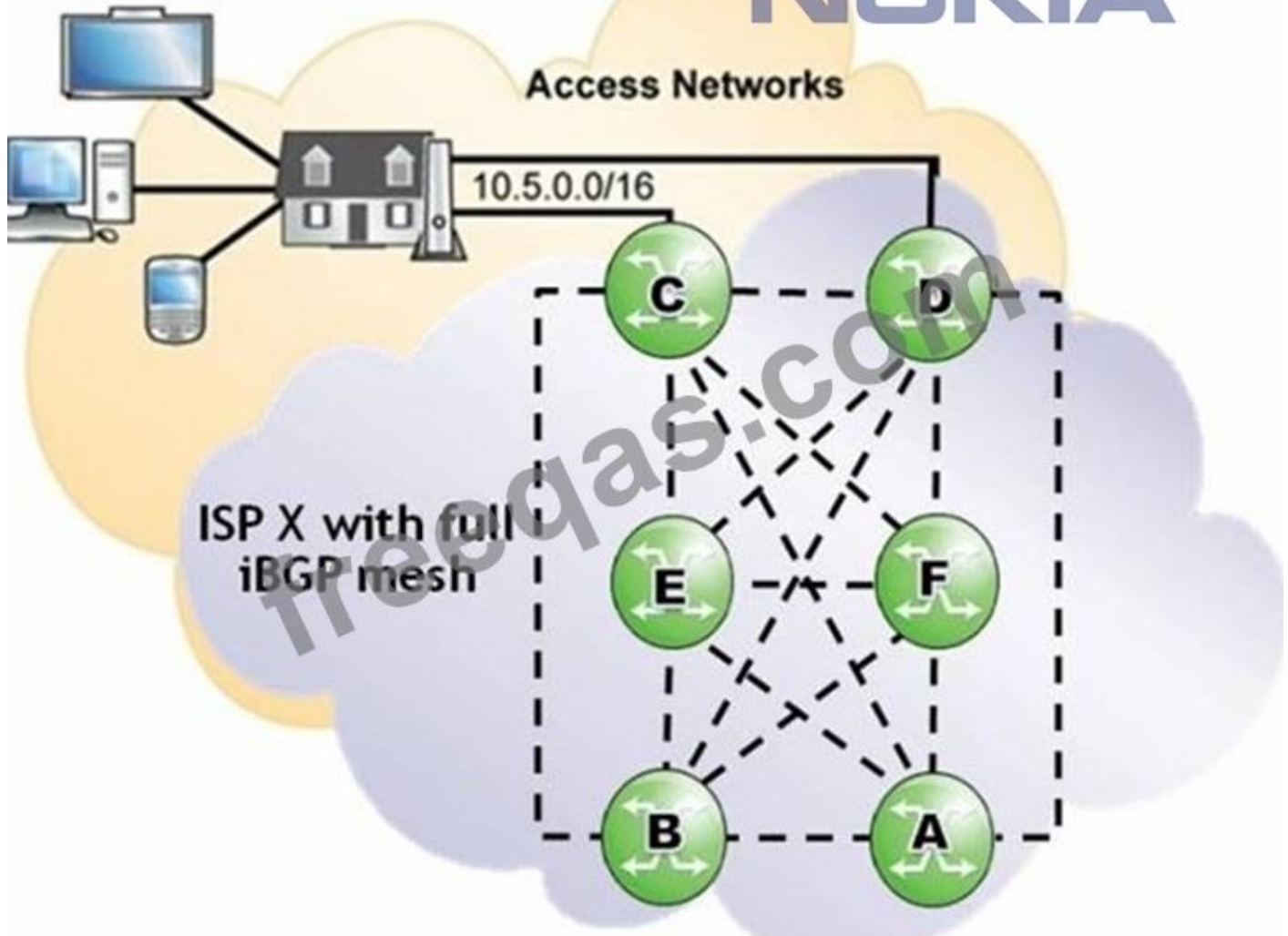
Router R2 learns the networks shown from IS-IS. Router R2 is configured to redistribute routes from IS-IS to OSPF as shown. Assume the OSPF and IS-IS adjacencies are operational. How many OSPF Type 5 LSAs will router R1 receive from router R2?

- A. 2
- B. 0
- C. 1
- D. 4
- E. 3

Answer: E ([LEAVE A REPLY](#))

NEW QUESTION: 94

Click the exhibit.



Considering that both routers C and D are advertising the eBGP learned prefix 10.5.0.0/16 into ISP X, which of the following best describes the route advertisement within ISP X?

- A. Router C sends the update to routers D, E and F.
- B. Router C sends the update to routers A, B, E and F.
- C. Router C sends the update to routers E and F only.
- D. Router C sends the update to routers A, B, D, E and F.

Answer: D ([LEAVE A REPLY](#))

NEW QUESTION: 95

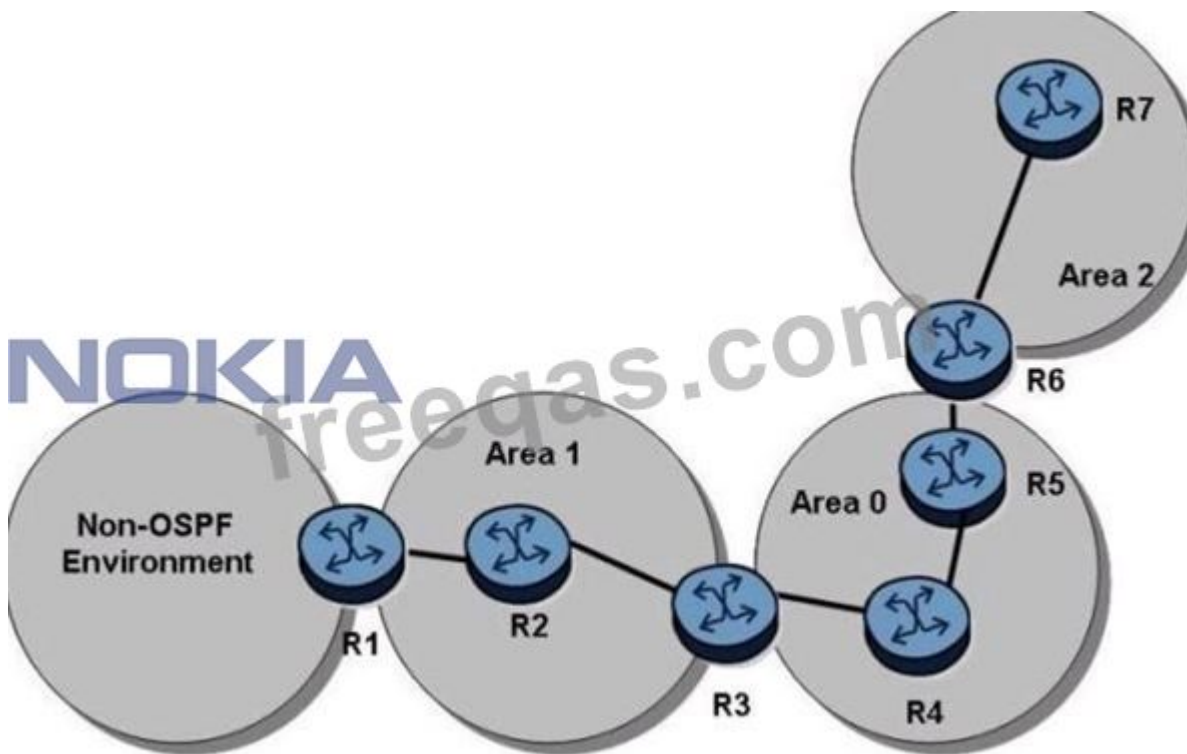
What is the source IP address in an OSPF update?

- A. 224.0.0.6
- B. The system address of the router
- C. 224.0.0.5
- D. The unicast IP address of the interface the update is being sent on.

Answer: (SHOW ANSWER)

NEW QUESTION: 96

Click the exhibit button.



In the topology shown, router R1 is an ASBR configured to export external routes to OSPF. Assuming that there are no stub networks, which of the following statements regarding Type 4 LSA generation is true?

- A. Router R1 generates a Type 4 LSA that is flooded to areas 0, 1, and 2.
- B. Router R3 generates a Type 4 LSA that is flooded to areas 0, 1, and 2.
- C. Router R3 generates a Type 4 LSA that is flooded to areas 0 and 2.
- D. Router R3 generates a Type 4 LSA that is flooded to area 0, and router R6 generates a Type 4 LSA that is flooded to area 2.

Answer: D ([LEAVE A REPLY](#))

NEW QUESTION: 97

Which of the following routes is NOT considered an internal route?

- A. A route received from a BGP peer within the same AS.
- B. A route received from a BGP peer from the same member AS of a confederation.
- C. A route received from a BGP peer from a different member AS of a confederation.
- D. A route originated by a router in a different cluster of the same AS.

Answer: C ([LEAVE A REPLY](#))

NEW QUESTION: 98

Which of the following is NOT a characteristic of MPLS?

- A. It will work over most physical layer protocols.
- B. It provides a mechanism to engineer network traffic patterns independently of IP routing tables.
- C. It provides the ability to establish connection oriented paths over a connectionless IP network.
- D. It can use GRE tunnels to transport data from many different protocols over an IP network.

Answer: (SHOW ANSWER)

NEW QUESTION: 99

The configuration of an Nokia 7750 SR is given below. Router R1 has established BGP sessions with routers R2 and R3. Which of the following is TRUE?

```
R1>config>router>bgp# info
-----
group "BGP-Peers"
  peer-as 65540
  neighbor 10.10.10.2
    description "R2"
  exit
  neighbor 10.10.10.3
    description "R3"
    peer-as 65550
  exit
exit
```

- A. Router R1 forms iBGP sessions with routers R2 and R3.
- B. Router R1 forms eBGP sessions with routers R2 and R3.
- C. Router R1 forms an iBGP session with router R2, and an eBGP session with router R3.
- D. The types of BGP sessions with routers R2 and R3 cannot be determined.

Answer: D ([LEAVE A REPLY](#))

NEW QUESTION: 100

Click the exhibit.

AS 65540 routers are iBGP fully-meshed. Prefixes advertised by router R2 have a local preference of 200.

Router R1 advertises the prefix 192.168.1.0/27 to routers R2 and R3. Assuming that router R3 is configured with "advertise-external", what is the expected output of "show router bgp routes" when executed on router R4?

A. Flag Network		LocalPref	MED
Nexthop	As-Path	Path-Id	VPNLabel
u*>i	192.168.1.0/27	100	None
	10.10.10.3	None	-
	65541		
i	192.168.1.0/27	200	None
	10.10.10.2	None	-
	65541		

B. Flag Network		LocalPref	MED
Nexthop	As-Path	Path-Id	VPNLabel
u*>i	192.168.1.0/27	200	None
	10.10.10.2	None	-
	65541		

C. Flag Network		LocalPref	MED
Nexthop	As-Path	Path-Id	VPNLabel
u*>i	192.168.1.0/27	200	None
	10.10.10.2	None	-
	65541		
i	192.168.1.0/27	100	None
	10.10.10.3	None	-
	65541		

D. Flag Network		LocalPref	MED
Nexthop	As-Path	Path-Id	VPNLabel
u*>i	192.168.1.0/27	200	None
	10.1.2.3	None	-
	65541		
i	192.168.1.0/27	200	None
	10.10.10.2	None	-
	65541		
i	192.168.1.0/27	100	None
	10.10.10.3	None	-
	65541		

A. Option D

B. Option A

C. Option B

D. Option C

Answer: D ([LEAVE A REPLY](#))

NEW QUESTION: 101

A CE is connected to an IES interface. Which of the following is TRUE?

- A. The IES must include a network port.
- B. The IES can only include one SAP for the CE.
- C. The IES must use an IP address that is different than the CE.
- D. The IES's interface must be an IGP peer with the CE.

Answer: C ([LEAVE A REPLY](#))

NEW QUESTION: 102

Click on the exhibit. After the lsp-ping command is executed, which of the following best describe the router's action?

- A. MPLS Echo Request packets are sent within the LDP tunnel that is signaled for Mlsp-toR2".
- B. MPLS Echo Request packets are IP-routed to the destination address of "lsp-toR2".
- C. MPLS Echo Request packets are sent within the RSVP-TE tunnel that is signaled for "lsp-toR2".
- D. MPLS Echo Request packets are sent to the destination address of "lsp-toR2" over TCP.

Answer: ([SHOW ANSWER](#)**)**

NEW QUESTION: 103

Which of the following describes 6PE?

- A. P routers run IPv4 only. PE routers run IPv4 only and exchange IPv6 routes using MP-BGP.
- B. P routers run IPv6 only. PE routers run IPv6 only and exchange IPv4 routes using MP-BGP.
- C. P routers run IPv4 only. PE routers run both IPv4 and IPv6 and exchange IPv6 routes using MP-BGP.
- D. P routers run IPv6 only. PE routers run both IPv4 and IPv6 and exchange IPv4 routes using MP-BGP.

Answer: C ([LEAVE A REPLY](#))

NEW QUESTION: 104

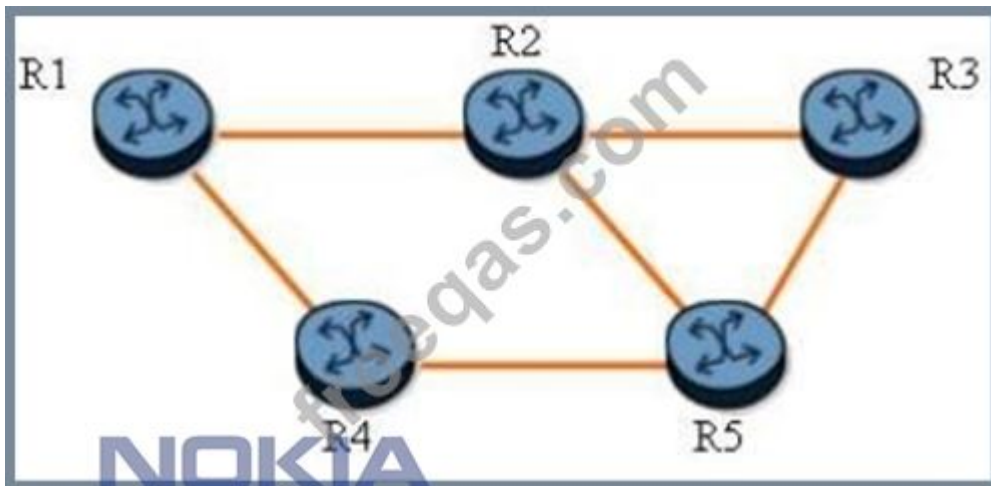
The Nokia 7750 SR supports which two of the OSPF area types below?

- A. Not So Stubby Areas
- B. Level 1 Areas
- C. Stub Areas
- D. Partially Stubby Areas

Answer: A,C ([LEAVE A REPLY](#))

NEW QUESTION: 105

Click on the exhibit.



An LSP traverses the path R1-R2-R3. With one-to-one fast reroute enabled, which router becomes a DMP for the detour tunnels?

- A. Router R4
- B. Router R1
- C. Router R5
- D. Router R3
- E. Router R2

Answer: C ([LEAVE A REPLY](#))

NEW QUESTION: 106

Which of the following about the Nokia 7750 SR sdp-ping is TRUE?

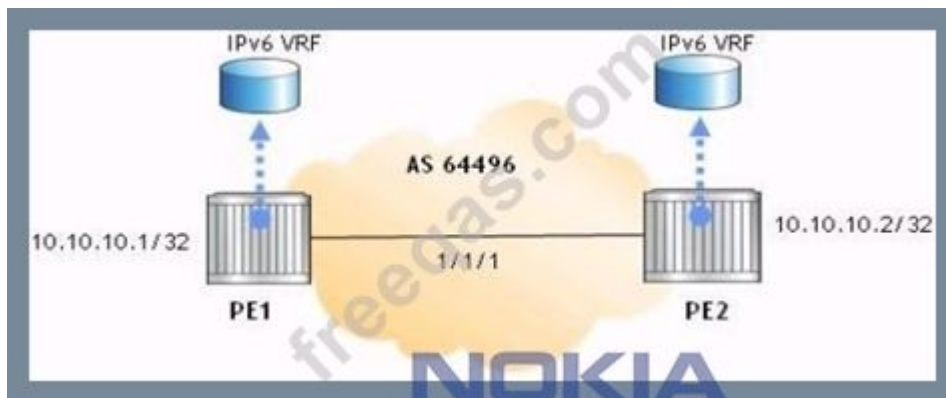
- A. It tests the reachability of hosts connected to an SDP.
- B. It tests the IGP reachability of the far-end IP address of an SDP.
- C. It tests that the MTU settings of a service are correct.
- D. It tests in-band, uni-directional or round-trip connectivity of SDPs.

Answer: ([SHOW ANSWER](#)**)**

Valid 4A0-C04 Dumps shared by PrepPdf.com for Helping Passing 4A0-C04 Exam! PrepPdf.com now offer the **newest 4A0-C04 exam dumps**, the PrepPdf.com 4A0-C04 exam **questions have been updated** and **answers have been corrected** get the **newest** PrepPdf.com 4A0-C04 dumps with Test Engine here: <https://www.preppdf.com/Nokia/4A0-C04-prepaway-exam-dumps.html> (300 Q&As Dumps, **40%OFF Special Discount: Exam-Tests**)

NEW QUESTION: 107

Click the exhibit.



The two PEs are providing 6VPE and IPv4 VPRNs. The core network is IPv4/MPLS. Which of the following is the BGP family configuration for the MP-BPG on the PEs?

- A. family vpn-ipv4ipv6
- B. family vpn-ipv4 vpn-ipv6
- C. family ipv6 vpn-ipv6
- D. family ipv4 ipv6

Answer: B ([LEAVE A REPLY](#))

NEW QUESTION: 108

What is the default inbound metric for RIP on the Nokia 7750 SR?

- A. A value of 1.
- B. A value of 15.
- C. Whatever the advertised metric happens to be.
- D. This must be administratively set as there is no default value.

Answer: A ([LEAVE A REPLY](#))

NEW QUESTION: 109

Which of the following statements regarding route reflectors is TRUE?

- A. Route reflectors do not work in conjunction with confederations.
- B. Route reflectors propagate BGP learned routes to their clients.
- C. Route reflectors disable iBGP split horizon for all iBGP peers in the AS.
- D. Route reflectors require "n" iBGP sessions, where "n" is the number of BGP routers in the AS.

Answer: B ([LEAVE A REPLY](#))

NEW QUESTION: 110

If OSPF is used in a multi-area OSPF network, which of the following statements regarding route summarization is true?

- A. Manual route summarization is done on the ABRs. By default, no route summarization is done and all routes are advertised to all areas.
- B. Manual route summarization must be done on all the backbone routers to be effective. Manual route summarization is optional on the routers in non-backbone areas.
- C. Manual route summarization is done on the ABRs. By default, automatic summarization is done; however, it may not be optimal for all networks.

D. Manual route summarization can only be done on autonomous system border routers.

Answer: ([SHOW ANSWER](#))

Valid 4A0-C04 Dumps shared by PrepPdf.com for Helping Passing 4A0-C04 Exam!
PrepPdf.com now offer the **newest 4A0-C04 exam dumps**, the PrepPdf.com 4A0-C04 exam **questions have been updated** and **answers have been corrected** get the **newest** PrepPdf.com 4A0-C04 dumps with Test Engine here: <https://www.preppdf.com/Nokia/4A0-C04-prepaway-exam-dumps.html> (300 Q&As Dumps, **40%OFF** Special Discount: **Exam-Tests**)