

## Nutanix.NCM-MCI-5.20.v2023-03-27.q77

<b>Exam Code:</b>	NCM-MCI-5.20
<b>Exam Name:</b>	Nutanix Certified Master - Multicloud Infrastructure (NCM-MCI) 5.20
<b>Certification Provider:</b>	Nutanix
<b>Free Question Number:</b>	77
<b>Version:</b>	v2023-03-27
<b># of views:</b>	959
<b># of Questions views:</b>	770
<a href="https://www.freeqas.com/qa/Nutanix/NCM-MCI-5.20/Nutanix.NCM-MCI-5.20.v2023-03-27.q77.html">https://www.freeqas.com/qa/Nutanix/NCM-MCI-5.20/Nutanix.NCM-MCI-5.20.v2023-03-27.q77.html</a>	

### NEW QUESTION: 1

A customer has two mission-critical applications and needs to have them backed up to a remote location. The remote location is connected using a leased line and has an average latency of 7 ms.

Which Nutanix technology will provide the shortest RPO possible?

- A. Asyn&DR
- B. NearSync
- C. Metro Availability
- D. Leap

**Answer: D ([LEAVE A REPLY](#))**

### NEW QUESTION: 2

An administrator is trying to correct high cluster IOPs and Cluster Controller Latency. Networking is the suspected issue.

Which networking parameters should be configured in the Nutanix cluster?

- A. Bond State and network latency
- B. Number of NICs connected and frame size
- C. Number of NICs connected and network latency.
- D. Number of NICs connected and bond state.

**Answer: B ([LEAVE A REPLY](#))**

### NEW QUESTION: 3

An administrator is using Nutanix Move to migrate a Windows VM from ESXi to AHV. Automated guest preparation is failing with an error:

Account has UAC enabled error

The administrator is using the local built-in administrator account for the Windows VM Admin approval mode must remain enabled.

What should the administrator do to continue with the migration with Nutanix Move?

- A. Use a Domain Admin account for the Windows VM
- B. Reboot the Windows VM and try the migration again
- C. Follow manual VM preparation guidelines
- D. Place Windows VM in Maintenance Mode

**Answer:** ([SHOW ANSWER](#))

<https://next.nutanix.com/move-application-migration-19/nutanix-xtract-validation-failed-user-must-belong-in-a-group-with-restore-files-and-directories-security-policy-31303>

#### **NEW QUESTION: 4**

An administrator needs to install prism central for their 2550 multi-cluster environment.

How should they deploy the application?

- A. Deploy a small 3-VM Prism Central instance.
- B. Deploy a large 1-VM Prism Central instance.
- C. Deploy a small 1-VM Prism Central instance.
- D. Deploy a large 3-VM Prism Central instance

**Answer:** ([SHOW ANSWER](#))

#### **NEW QUESTION: 5**

An administrator manages the following two Nutanix AOS 5.15 cluster environment:

\* Corp-cluster-01

\* Corp-cluster-02

The VM images must be available only on Corp-cluster-01, but cannot be checked out to cluster Corp-cluster-02. The images also cannot be checked out to any other clusters that are registered with Prism Central in the future.

Which two configuration settings must the administrator choose when creating the image placement policy that satisfies the stated requirements? (Choose two.)

- A. Set the policy enforcement to Hard.
- B. Set the policy enforcement to Soft.
- C. Create an image placement policy that identifies cluster Corp-cluster-01 as the target cluster
- D. Create an image placement policy that identifies cluster Corp-cluster-02 as the target cluster.

**Answer:** A,C ([LEAVE A REPLY](#))

#### **NEW QUESTION: 6**

A company's Security team has requested that all IT resources be hardened.

What should an administrator do to increase the security of the Nutanix environment ?

- A. Enable STIG
- B. Enable Cluster Lockdown
- C. Enable Flow

D. Enable Prism Central KMS

Answer: B ([LEAVE A REPLY](#))

### NEW QUESTION: 7

Refer to the exhibit.



An administrator notices a critical alert on the Metro Availability Protection Domain. What is causing this alert?

- A. VMware Site Recovery Manager is handling a failover event
- B. vSphere moved VMs to the remote container, and the VMs must be moved back.
- C. Metro Availability did not fail over and caused an outage.
- D. Metro Availability Protection domain is active on the remote site.

Answer: D ([LEAVE A REPLY](#))

### NEW QUESTION: 8

Nutanix Support asked an administrator to provide AHV logs to help solve a support request. Which task should be performed to provide log files to the support team?

- A. Upload log files from /home/nutanix/data/logs folder
- B. Enable Pulse to include additional support information
- C. Collect logs from the health page
- D. Run NCC Check from the command line

Answer: D ([LEAVE A REPLY](#))

### NEW QUESTION: 9

A customer has NearSync configured. When the administrator tries to restore a snapshot from 3 minutes ago, it is not available. The snapshots are happening at 15-minute intervals instead of at the 5-minute configured interval. When the protection domain was initially set up, the snapshots were happening at the expected 5-minute interval.

What should the customer do to enable the snapshots to happen at the expected interval?

- A. Fix a connectivity issue because the protection domain reverted to Async
- B. Configure the protection domain to take snapshots on 15-minute intervals

- C. Utilize Metro Availability to meet this requirement
- D. Change the protection domain to use Async DR

**Answer: A ([LEAVE A REPLY](#))**

#### **NEW QUESTION: 10**

A customer needs a DR solution designed around the following requirements:

- \* There are 8 ms of latency between Sites A and B
- \* The administrator needs the shortest RPO/RTO possible
- \* Application consistent snapshots are required
- \* Use of Nutanix VSS

Which Data Protection Method should be used?

- A. Metro Availability
- B. Async
- C. Cloud Connect
- D. Near Sync

**Answer: D ([LEAVE A REPLY](#))**

#### **NEW QUESTION: 11**

An administrator is deploying a new application to a Nutanix Enterprise Cloud. The application requires a security to prevent unauthorized access. The application also uses many non-standard ports that are unique to it. Security should not be changed for existing applications.

What should the administrator do to meet these requirement?

- A. Use existing categories for the VMs and modify existing security policies to include the specific port.
- B. Create new categories for the VMs, and modify existing security policies to include the new categories.
- C. Use existing categories for the VMs. and create new security policies to use the existing categories.
- D. Create new categories for the VMs, and create new security policies that include the new categories.

**Answer: D ([LEAVE A REPLY](#))**

#### **NEW QUESTION: 12**

An administrator needs to configure the cluster to ensure all VMs are capable of being restarted in the event of a host failure.

Which option provides this functionality?

- A. HA Reservation
- B. Live Migration
- C. VM Affinity
- D. Best Effort

**Answer: A ([LEAVE A REPLY](#))**

**NEW QUESTION: 13**

An administrator has been tasked with delivering a report on all nutanix Field Advisors (FAs) Affecting each of the clusters.

What is the most efficient way to collect this data?

- A. Use Prism to run NCC and Check for information on FAs
- B. Review the discoveries information on the support Portal
- C. Request an environmental audit from the Nutanix Support
- D. Review Field Advisories published on the Support Portal

**Answer:** ([SHOW ANSWER](#))

**NEW QUESTION: 14**

In an AHV cluster, an administrator needs to enable an application to share a disk b group but needs to enable the VMs to see the volume group.

How should the administrator accomplish this task?

- A. Add the volume group to the VM using the update link from the VM dashboard.
- B. Configure a virtual disk on each VM with identical attributes in the storage dashboard.
- C. Add a disk to one VM and enable read/write on it from the other VM.
- D. Create a shared folder for the VMs using Nutanix Files.

**Answer:** A ([LEAVE A REPLY](#))

**NEW QUESTION: 15**

An administrator protected a DB VM running on a Nutanix cluster with NearSync Replication, which schedules to repeat every 15 minutes to a second site. The daily change rate is low. During nightly backups, the replication window is missed due to write volume.

Which two options describe the expected behavior? (Choose two.)

- A. The Administrator needs to re-enable it manually.
- B. The system continuously tries to get to the NearSync schedule.
- C. Protection Domain transitions back to the hourly schedule.
- D. NearSync stops working and fails over to the remote site.

**Answer:** B,D ([LEAVE A REPLY](#))

**NEW QUESTION: 16**

An administrator needs to deploy an application with a large amount of data connected via Nutanix Volumes.

Which two actions should the administrator take when designing the Volume Group? (Choose two.)

- A. Use multiple subnets for iSCSI traffic
- B. Enable RSS (Receive Side Scaling)
- C. Enable thick provisioning on the Volume Group(s)
- D. Distribute workload across multiple virtual disks

Answer: B,D ([LEAVE A REPLY](#))

## 9. Recommendations

- Use the Data Services IP method for external host connectivity to VGs.
- For backward compatibility, you can upgrade existing environments nondisruptively and continue to use MPIO for load balancing and path resiliency.
- For security, use at least one-way CHAP.
- Leave ADS enabled. (Enabled is the default setting.)
- Use multiple disks rather than a single large disk for an application. Consider using a minimum of one disk per Nutanix node to distribute the workload across all nodes in a cluster. Multiple disks per Nutanix node may also improve an application's performance.
- For performance-intensive environments, we recommend using between four and eight disks per CVM for a given workload.
- Use dedicated network interfaces for iSCSI traffic in your hosts.
- Place hosts that use Nutanix Volumes on the same subnet as the iSCSI data services IP.
- Use a single subnet (broadcast domain) for iSCSI traffic. Avoid routing between the client initiators and CVM targets.
- Receive-side scaling (RSS) allows the system to use multiple CPUs for network activity. With RSS enabled, multiple CPU cores process network traffic, preventing a single CPU core from becoming a bottleneck. Enabling RSS within hosts can be beneficial for heavy iSCSI workloads. For VMs running in ESXi environments, RSS requires VMXNET3 VNICs. For Hvner-V environments, enable VMO to take full advantage of Virtual RSS.

**Valid NCM-MCI-5.20 Dumps** shared by PrepPdf.com for Helping Passing NCM-MCI-5.20 Exam! PrepPdf.com now offer the **newest NCM-MCI-5.20 exam dumps**, the PrepPdf.com NCM-MCI-5.20 exam **questions have been updated** and **answers have been corrected** get the **newest** PrepPdf.com NCM-MCI-5.20 dumps with Test Engine here:

<https://www.preppdf.com/Nutanix/NCM-MCI-5.20-prepaway-exam-dumps.html> (166 Q&As

Dumps, **40%OFF** Special Discount: **Exam-Tests**)

### NEW QUESTION: 17

What are two types of Protection Domains that Nutanix Offers for data Protection? Choose Two

- A. Async DR
- B. Consistency Group
- C. Snapshot
- D. Metro Availability

Answer: ([SHOW ANSWER](#))

### NEW QUESTION: 18

An administrator is planning to deploy a Nutanix cluster to support a few high-performance VMs. This deployment will have the following considerations:

- \* Individual VMs will likely generate network throughputs in the range of 90-100Mbps
- \* Due to the configuration of the VMs, it is unlikely that a node will host more than one or two of them at a time
- \* Individual VMs will communicate with only a few (one or two) remote hosts at a time
- \* Multicast will not be used in the environment
- \* The hosts are connected via two 1GbE network connections

How should the administrator configure the network bonds to meet this requirement while maintaining the simplest switch configuration?

- A. Configure bond0 as active-backup
- B. Configure bond0 as balance-tcp
- C. Configure bond0 as balance-sib
- D. Configure bond0 as balance-lacp

**Answer: C (LEAVE A REPLY)**

### NEW QUESTION: 19

Refer to the exhibit.



An administrator creates a security policy that isolates their financial application from accessing the Internet. When viewing the policy in Prism Central, several connections from the application are outbound to the Internet.

What is causing this issue with the policy?

- A. The 0.0.0.0 address was not specified in the outbound rule.
- B. The blocked connections are illustrated for information only.

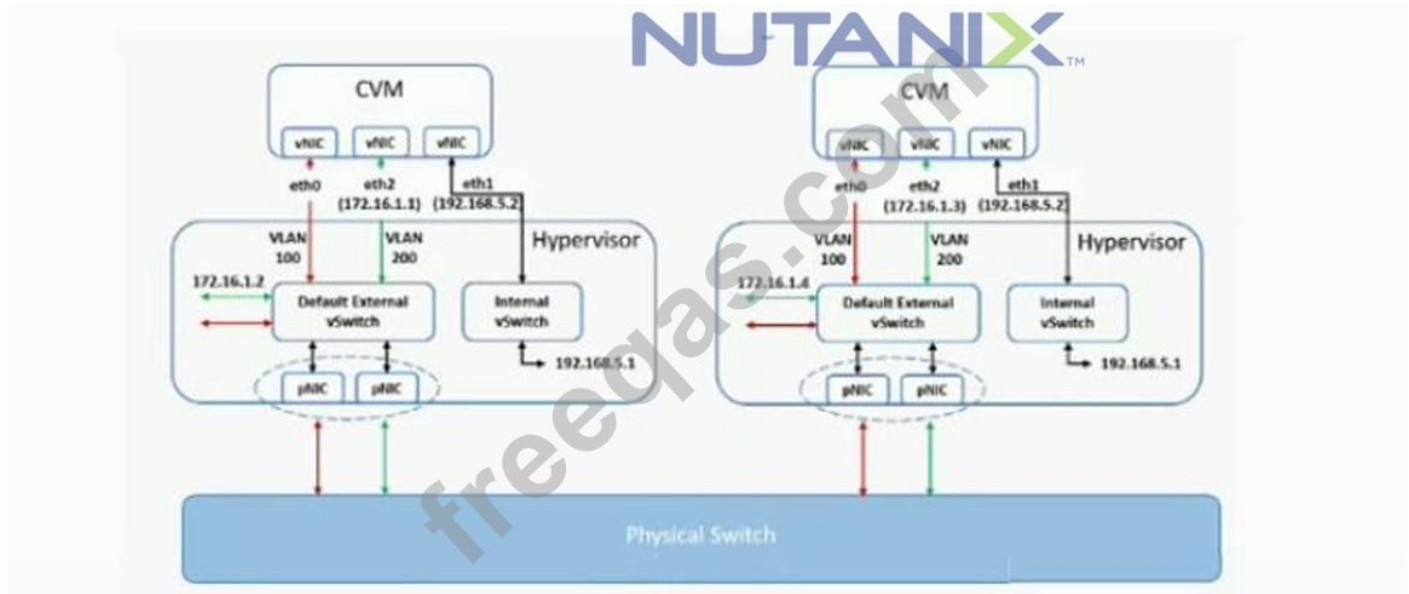
- C. The Activate box was not checked in the rule, so it is not enforcing.
- D. The policy has been left in monitor mode instead of enforcing mode.

**Answer: (SHOW ANSWER)**

<https://portal.nutanix.com/page/documents/details?targetId=Prism-Central-Guide-Prism-v510:mul-security-policy-management-pc-c.html>

**NEW QUESTION: 20**

Refer to the exhibit.



What is the purpose of eth2 on the CVMs?

- A. RDMA Network Segmentation
- B. Network Segmentation
- C. Remote site connectivity
- D. iSCSI connectivity

**Answer: B (LEAVE A REPLY)**

**NEW QUESTION: 21**

The following critical Availability Alert displays in prism Central:

*Availability Zone configured in Protection Policy PP-BCA-1HR is not accessible.*

The protection Policy PP-BCA-1HR includes a business critical application with a 1-hour snapshot frequency.

What is causing this issue?

- A. Workloads included in PP-BCA-1HR are no longer within their intended RPO.
- B. NearSync replication between the Availability Zones has fallen out of scope.
- C. Prism Central in the Availability Zone for PP-BCA-1HR is unavailable.
- D. There is a scheduled outage for the Availability Zone referenced in Protection Policy PP-BCA-1HR.

**Answer: D (LEAVE A REPLY)**

**NEW QUESTION: 22**

An administrator has planned a RAM upgrade on a 3-node Nutanix cluster. Which step should be performed first, for a non-disruptive memory upgrade?

- A. Stop one CVM at time
- B. Power off one host at time
- C. Run NCC
- D. Live Migrate VMs

**Answer: C** ([LEAVE A REPLY](#))

**NEW QUESTION: 23**

An administrator configured Active Directory (AD) authentication for their Nutanix environment. When logging in using an AD user account, the login process takes more than one minute to complete. No delay occurs when logging a local account.

What should the administrator confirm to resolve this issue?

- A. The domain controller being used is configured as a global catalog server.
- B. The user search base for the group is configured correctly
- C. The service Account Username is correct for the domain.
- D. Active directory lookups are configured to use Non-Recursive mode.

**Answer: D** ([LEAVE A REPLY](#))

**NEW QUESTION: 24**

An administrator is notified that a bare metal database server is down. This database server is being served storage using a Nutanix Volume Group. Upon investigating, the administrator finds that the disks in the database server that map to the vDisks in the volume group have gone offline.

What is causing this issue?

- A. A CVM serving the Volume Group has gone offline.
- B. The Volume Group Load Balancer has been disabled.
- C. Port 9443 is blocked in the server firewall.
- D. Port 3260 has been blocked in the server firewall.

**Answer: A** ([LEAVE A REPLY](#))

**NEW QUESTION: 25**

Microsegmentation was recently enabled in a Nutanix environment. The administrator wants to leverage Prism Central to create a policy that will block all traffic, regardless of direction, between two groups of VMs identified by their category.

Which policy should be used to meet this requirement?

- A. A Quarantine Policy
- B. An Isolation Environment Policy
- C. An Application Security Policy
- D. A Whitelist-Based Policy

**Answer: B (LEAVE A REPLY)**

### Creating an Isolation Environment Policy

An isolation environment policy identifies two groups of VMs and blocks communications between the groups. The two groups are identified by category. You can specify an additional category to restrict the scope of the policy to that category.

#### About this task

To create an isolation environment, do the following:

#### Procedure

1. On the **Explore** tab of the main menu, click **Security Policies** from the entities list (left column). See [Security Policies Summary View](#).

2. Click **Create Security Policy**, and then click **Isolate Environments**.



### NEW QUESTION: 26

An organization is planning an upgrade to AOS 5.15 and wants to understand which cluster products and/or services are supported for physical traffic isolation.

Which Nutanix component supports its network traffic being isolated onto its own virtual network?

- A. Containers
- B. Files
- C. Objects
- D. Volumes

**Answer: D (LEAVE A REPLY)**

### NEW QUESTION: 27

An administrator has Created a new VM, but When accessing the console to monitor the guest install, the administrator sees the effect shown in the exhibit.

What is the likely cause of this issue?

- A. The Wrong type of disk was specified
- B. The boot order is incorrectly configured
- C. the installation media was not mounted
- D. the nutanix virtIO driver was not mounted

**Answer: (SHOW ANSWER)**

### NEW QUESTION: 28

An administrator needs to take a single node down for maintenance. Which two steps should the administrator take? (Choose two)

- A. Verify the data resiliency status of the cluster.
- B. Make sure Auto Evacuation is enabled
- C. Shut down or live migrate all VMs off of the node.
- D. Reclaim the licenses to the Nutanix Support Portal.

**Answer: A,C (LEAVE A REPLY)**

### NEW QUESTION: 29

An administrator is managing two AHV and vSphere-Based Clusters. The administrator is able to install a Windows Guest OS from an ISO Image to VMWare VMs , but is unable to do the same activity with AHV VMs.

What should the administrator do to successfully perform this action with AHV VMs?

- A. Verify cluster iSCSI data Services IP
- B. Manag Nutanix Guest tools
- C. Provide virtIO Drivers
- D. Change VM Setting From BIOS to UEFI

**Answer:** ([SHOW ANSWER](#))

#### NEW QUESTION: 30

How should an administrator view the storage consumed by the recycle bin?

- A. In the Diagram or Table view on the Storage dashboard
- B. On the storage Summary Widget on the Prism Dashboard
- C. On the storage Overview dashboard
- D. In the Cluster Details Page of the cluster setting

**Answer:** A ([LEAVE A REPLY](#))

#### NEW QUESTION: 31

Refer to the exhibit.

User	Quota	Enforcement
All Users	No quota limit	
fileslab\user1	5 GiB	Soft
All Users in "AAPM"	10 GiB	Hard

User 1 and User 2 belong to the AAPM group

What are two descriptions of how Files perform quota management? (Choose two.)

- A. User 1 can continue to add another 5GB file but will receive a daily notification email.
- B. User 1 can add an 8GB file to the share without receiving notification.
- C. User 2 can continue to add another 3GB file but will receive a daily notification email.
- D. User 2 can add an 8GB file without receiving a notification email.

**Answer:** A,D ([LEAVE A REPLY](#))

**Valid NCM-MCI-5.20 Dumps** shared by PrepPdf.com for Helping Passing NCM-MCI-5.20 Exam! PrepPdf.com now offer the **newest NCM-MCI-5.20 exam dumps**, the PrepPdf.com NCM-MCI-5.20 exam **questions have been updated** and **answers have been corrected** get

the **newest** PrepPdf.com NCM-MCI-5.20 dumps with Test Engine here:

<https://www.preppdf.com/Nutanix/NCM-MCI-5.20-prepaway-exam-dumps.html> (166 Q&As

Dumps, **40%OFF** Special Discount: **Exam-Tests**)

### NEW QUESTION: 32

An administrator has an existing Nutanix seven-node cluster running at RF2 that must be changed to have the following capabilities:

- \* RF3 set for the cluster
- \* Performance tier deduplication

What is the minimum memory needed on the CVMs to allow for these capabilities?

- A. 24GB
- B. 28GB
- C. 20GB
- D. 32GB

**Answer: B (LEAVE A REPLY)**

### NEW QUESTION: 33

Refer to the exhibits.

An administrator has reported that a new VM is not performing well.

#### Prism Element, VM Table Metrics

VM Name	Host	IP Address	Cores	Memory Capacity	Storage	CPU Usage	Memory Usage	Controller Read IOPS	Controller Write IOPS	Controller I/O Bandwidth	Controller Avg IO Latency	Backup ...	Flash Mode
NCNCAPVM	...	...	4	8GiB	9.86 GiB / 40 GiB	25.85%	0%	0	0	13 KBps	2.33ms	Yes	No

VM Name: NCNCAPVM

Cores: 4

Memory Capacity: 8GiB

Storage: 9.86 GiB / 40 GiB

CPU Usage: 25.85%

Memory Usage: 0%

Controller Read IOPS: 0

Controller Write IOPS: 0

Controller I/O Bandwidth: 13 KBps

Controller Avg IO Latency: 2.33ms

Backup ...: Yes

Flash Mode: No

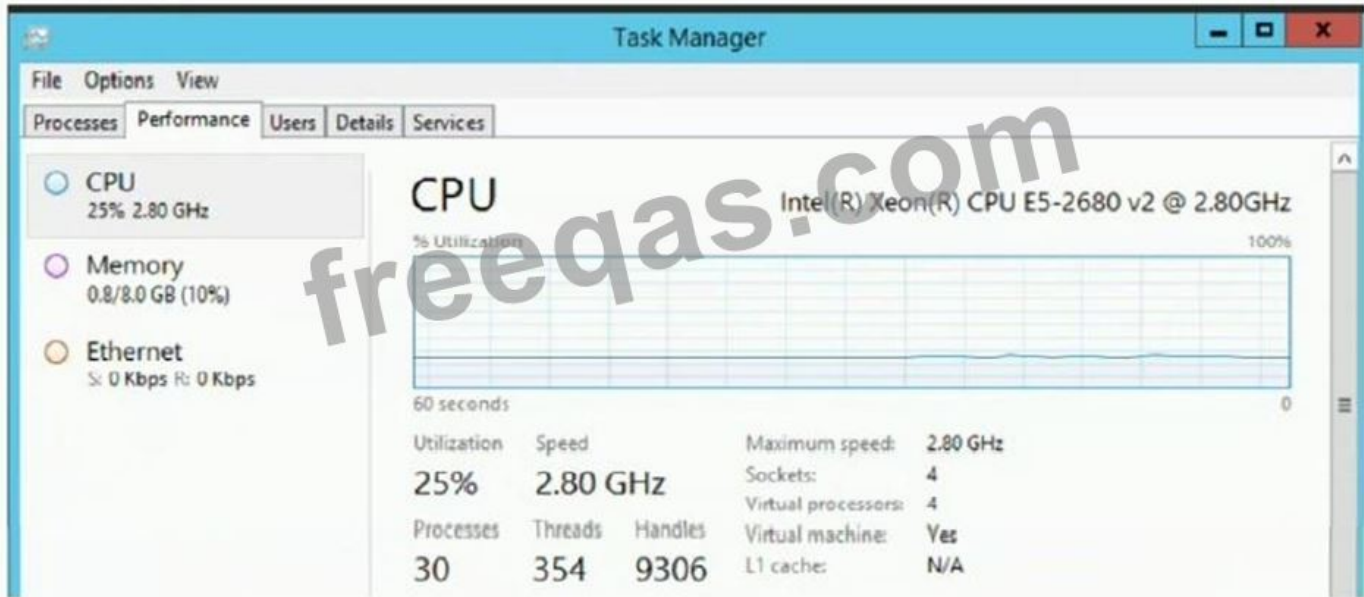
#### Prism Element, Analysis Chart



Hypervisor CPU Usage: 25%  
Hypervisor CPU Ready Time: 0%

**NUTANIX**<sup>TM</sup>

VM Task Manager



After analyzing the information presented in the exhibits, which option shows the best conclusion regarding this workload?

- A. VM is Storage constrained, because the workload is waiting for storage access.
- B. VM is not CPU constrained, because the VM is not running, a multithreaded application.
- C. VM is CPU constrained since the hypervisor cannot provide the required resources.
- D. VM is CPU constrained because more CPU needs to be added to the VM.

**Answer: A (LEAVE A REPLY)**

**NEW QUESTION: 34**

A guest VM is reported to have poor storage performance. It has an I/O profile of 80% read. 20% write, and the HDDs form more than 50% of the read source.

What should an administrator do to resolve this issue?

- A. Increase the write cache
- B. Increase SSD capacity
- C. Use HDDs with higher RPM
- D. Increase the OPLOG

**Answer: (SHOW ANSWER)**

**NEW QUESTION: 35**

An administrator needs to determine current CPU usage across multiple clusters.

Which method should the administrator use to generate this type of report?

- A. Prism Central, Explore, Clusters
- B. Prism Central, Home, Add Widgets
- C. Prism Central, Home, Manage Dashboards
- D. Prism Central, Explore, Hosts

**Answer: B (LEAVE A REPLY)**

**NEW QUESTION: 36**

A customer with a four-node RF2 cluster is adding application VMs to their system. After adding these VMs, the Prism dashboard shows 81% storage utilization.

What is the consequence of running the cluster at 81% storage utilization?

- A. The customer has the ability to add more VMs up to the 100% storage utilization.
- B. There is available capacity in the storage fabric and the cluster is resilient.
- C. Node failure is imminent due to storage utilization.
- D. The cluster is not resilient in the storage fabric

**Answer: (SHOW ANSWER)**

<https://next.nutanix.com/how-it-works-22/recommended-maximum-storage-utilization-37234>

**NEW QUESTION: 37**

Refer to the exhibit.



An administrator logs in to Prism and sees the status shown in the exhibit within the Hardware Diagram section.

What should the administrator do?

- A. Reseat all disks immediately. If this does not help, reseat the nodes.
- B. Restart all CVMs for the cluster to check, confirm health and repartition and add the disks.
- C. Check status of applications running on the cluster and call support
- D. Resolve all alerts and re-import the disks to make sure there is no service disruption.

**Answer: C (LEAVE A REPLY)**

**NEW QUESTION: 38**

An administrator deletes a large amount of data from a Volume Group presented to a Linux VM. The administrator notices that the deleted data has not been reclaimed as usable storage.

What action should be taken to reclaim the storage capacity?

- A. Shrink the Volume Group that is associated with the Linux VM
- B. Unmount the Volume Group and then Remount the Volume Group
- C. Enable the unman operation on the Linux VM
- D. Run Defrag on the Linux VM

**Answer: B (LEAVE A REPLY)**

<https://next.nutanix.com/how-it-works-22/vm-capacity-and-prism-capacity-are-different-33134>

#### **NEW QUESTION: 39**

An administrator is deploying an application using Nutanix Volumes. After configuring the volume group and connecting the guest's iSCSI initiator to the volume group, they begin performance testing.

The administrator learns that performance on the virtual disk attached to the iSCSI initiator is far less than that of a virtual disk connected directly to the VM.

Which situation is causing this condition?

- A. The VM's iSCSI traffic is being routed to the data services IP subnet
- B. The cluster data services IP address is a bottleneck, shared with other iSCSI traffic
- C. The performance test is generating small block random 10.
- D. Data Locality ensures that VM attached disks are always faster than iSCSI volumes.

**Answer: B (LEAVE A REPLY)**

#### **NEW QUESTION: 40**

Which method can be used to migrate a VM configured for UEFI-boot from a Nutanix Hyper-V cluster to AHV?

- A. Storage vMotion
- B. Cloud Connect
- C. Live Migration
- D. Nutanix Move

**Answer: D (LEAVE A REPLY)**

#### **NEW QUESTION: 41**

An application owner had reported that an AHV - based critical application VM is performing very slowly, after initial diagnostics it has been observed that the CPU utilization is significantly higher than normal.

What two actions should the administrator take on this VM without shutting it down? choose two.

- A. increase the number of vCPU in prism element
- B. configure additional cores in acli
- C. ensure CPU Hot-add is supported by the Guest OS
- D. use prism element to increase the number of cores

**Answer: B,C (LEAVE A REPLY)**

#### **NEW QUESTION: 42**

An Administrator Wants a VM to Communicate with two Separate VLANs.

What steps should the administrator complete?

- A. Add two NICs to the VM and Configure one for each VLAN
- B. Configure a security Policy to assign VLANs to the VM
- C. Add a single NIC to the VM and Configure it for both VLANs
- D. Turn on IPAM for auto configuration of VLANs

**Answer: A (LEAVE A REPLY)**

#### **NEW QUESTION: 43**

A customer has a Nutanix cluster with 10Gb connectivity via switch fabric extenders. The administrator receives NCC health check errors of latency greater than 200ms.

Which action should the administrator take to resolve the NCC errors?

- A. Replace the switch fabric extenders with 10G line rate switches
- B. Upgrade NCC and increase the vCPU of the CVM
- C. Add 2 additional 10G uplinks from the switch fabric extenders per node
- D. Upgrade NCC and increase the CVM memory by 4Gb

**Answer: A (LEAVE A REPLY)**

#### **NEW QUESTION: 44**

An administrator is currently using both 10g uplink with LACP and balance-tcp. A single VM should not be allowed to use more than a single 10G uplink, and both uplinks should be utilized.

Which two command should be used to configure the bond? (choose two)

- A. Ovs-vsctl set port br0-up bond\_mode=balance-slb
- B. Ovs-vsctl set port br0-up bond\_mode=active-backup
- C. Ovs-vsctl set port br0-up bond\_mode=balance-tcp
- D. Ovs-vsctl set port br0-up other\_config: bond-rebalance-interval=30000

**Answer: A,D (LEAVE A REPLY)**

#### **NEW QUESTION: 45**

A customer has a primary datacenter with 12 Nutanix blocks distributed across three racks. The customer wants to achieve the most resiliency possible. They also have a datacenter in a branch office that is 400 kilometers away from the primary datacenter.

Which two solutions should be used? (Choose two.)

- A. Block awareness
- B. Async DR to a remote site
- C. Time Stream to a remote site
- D. Rack awareness

**Answer: B,D (LEAVE A REPLY)**

#### **NEW QUESTION: 46**

An administrator is deploying Nutanix Files 3.5 and needs to configure the sizing of the FSVMs for an increased number of concurrent SMB connections over the default 750.

What should the administrator do?

- A. During installation, input the correct number of connections in the File Server Installation screen and complete the installation
- B. Complete the default installation change the CPU and RAM in Prism, and then log into the File Server dashboard and change the File Server Properties
- C. During installation, click Customize on the File Server Installation screen, change the number of connections, and finish the installation
- D. Deploy the Files VMs. power down the three FSVMs. change the CPU and RAM via Prism, and then power the three FSVMs back up

**Answer: C (LEAVE A REPLY)**

**Valid NCM-MCI-5.20 Dumps** shared by PrepPdf.com for Helping Passing NCM-MCI-5.20 Exam! PrepPdf.com now offer the **newest NCM-MCI-5.20 exam dumps**, the PrepPdf.com NCM-MCI-5.20 exam **questions have been updated** and **answers have been corrected** get the **newest** PrepPdf.com NCM-MCI-5.20 dumps with Test Engine here:

<https://www.preppdf.com/Nutanix/NCM-MCI-5.20-prepaway-exam-dumps.html> (166 Q&As Dumps, **40%OFF Special Discount: Exam-Tests**)

#### **NEW QUESTION: 47**

An administrator responsible for a VDI environment needs to investigate reports of slow logins. The administrator finds that increasing the number of vCPUs from 2 to 4 will reduce the login times. Production workloads are consuming 75% of the host CPU on the cluster. The administrator increases the vCPU count on all of the VDI VMs.

What are two impacts on the cluster? (Choose two.)

- A. Increase CPU utilization%
- B. Increasing CPU counts will decrease memory utilization
- C. Increase memory utilization%
- D. Increase CPU ready%

**Answer: B,C (LEAVE A REPLY)**

#### **NEW QUESTION: 48**

The following alert appears on the file server alerts tab in the file server dashboard:

**File Server FS47-SS has multiple VMs on a single node**

Which two events can generate this alert? (choose two)

- A. A node is set to the maintenance mode in a three node cluster.
- B. A Nutanix file with four the server VMs is deployed on a three-node cluster.

- C. A node failed in a three-node cluster.
- D. A three-node cluster hosting the file server is undergoing AOS upgrade.

**Answer: A,D ([LEAVE A REPLY](#))**

#### **NEW QUESTION: 49**

An administrator receives reports that VDI desktop performance in an 8-node Nutanix VDI environment is poor. Opening applications takes between 1 and 2 minutes.

When investigating the issue, the following conditions are found:

- \* Cluster memory utilization: 80%
- \* Cluster SSD utilization: 70%
- \* Average VM CPU Wait Time: 11%
- \* CVM CPU utilization: 75%

Which action should be taken to improve VDI performance?

- A. Increase the amount of SSD storage in the cluster.
- B. Add CPU resources to the cluster.
- C. Increase the number of vCPU cores allocated to the CVM.
- D. Add memory to the nodes in the cluster.

**Answer: ([SHOW ANSWER](#))**

#### **NEW QUESTION: 50**

Which nutanix cluster component is responsible for triggering data movement events between SSD and HDD tiers?

- A. Oplog
- B. Cassandra
- C. Genesis
- D. ILM

**Answer: D ([LEAVE A REPLY](#))**

#### **NEW QUESTION: 51**

An administrator is managing multiple Windows and Linux VMs connected to Nutanix Volumes. The Linux VMs are experiencing intermittent connectivity issues. The Windows VMs do not experience the same issue.

Which option should the administrator use to resolve this issue?

- A. Utilize a separate subnet for the Linux VMs
- B. Utilize Jumbo Frames
- C. Add additional disks to the Volume Group
- D. Set the SCSI timeout value to 60

**Answer: ([SHOW ANSWER](#))**

#### **NEW QUESTION: 52**

An administrator learns that some security settings in a cluster have been changed. The environment is out of compliance with required policies.

Which function should be used to revert any settings that have changed from the defaults and prevent further violations?

- A. Cluster Lockdown with strong password enforcement
- B. Defense Information Systems Agency STIG enforcement
- C. Security Configuration Management Automation (SCMA)
- D. Advanced Intrusion Detection Environment (AIDE)

**Answer: C** ([LEAVE A REPLY](#))

#### **NEW QUESTION: 53**

An administrator knows that the disks in a cluster are out of date and a new firmware is available. For security reasons, these clusters do not have access to the Internet.

Which two steps must be completed to update the firmware? (Choose two.)

- A. Download a dark site bundle and stage it on an internal webserver.
- B. Select Upgrade Software, then select disks and upload the updated firmware.
- C. Configure LCM with a URL to access the firmware bundle.
- D. Download the updated firmware .tgz file from the Nutanix portal.

**Answer: A,C** ([LEAVE A REPLY](#))

#### **NEW QUESTION: 54**

An organization is running a Nutanix Cluster based on AOS 5.10.x and VMware vSphere 6.7. Currently, the CVM network is segmented and Storage only nodes not present.

A new security project based on NSX is coming. VMware Distributed Virtual Switches are required. The administrator needs to prepare the environment for the new project.

Which step should the administrator use to initiate the project?

- A. Enable Jumbo Frames to accommodate network frames
- B. Convert storage only nodes into vSphere nodes
- C. Manually disable CVM network Segmentation
- D. Enable Nutanix Flow at the Prism Central Level

**Answer: A** ([LEAVE A REPLY](#))

#### **NEW QUESTION: 55**

An administrator needs to create and start five new VMs for a Data Analytics Project (OLAP). The VM Profile is as follows:

- \* vCPU:4
- \* vRAM: 64 GB
- \* vDisk: 1.5 TB

Each of the four nodes of the Nutanix cluster has the following:

- \* 24 vCPU. 20% overall usage
- \* 192 GB RAM, 60% overall usage

\* 2x1920GBSSD

\* 4x 2 TB HDD

At cluster level, there is a single RF2 container that is 30% utilized and has an extent store capacity of 13.5 TB.

Which component requires administrator attention?

- A. Flash Tier because it is not enough to accommodate the workloads.
- B. Physical RAM, because it is not enough to power on all of the new VMs.
- C. Storage, because the capacity is not enough to create VMs.
- D. Physical Cores, because they are not enough to power on all of the new VMs.

**Answer: ([SHOW ANSWER](#))**

### **NEW QUESTION: 56**

An administrator is configuring an All Flash cluster to support the following workloads:

\* Full clone virtual desktops

\* Hadoop

\* Write heavy databases

Which three correct configuration options should the administrator use to meet the item requirements? (Choose three.) For each procedure, indicate whether it is a correct or incorrect procedure that must be configured to meet the item requirements using the drop-down option.

Procedure	Correct/Incorrect
One container with compression and deduplication enabled for full clone virtual desktops	Select Select Correct Incorrect
One container with compression and Erasure Coding enabled for Hadoop	Select Select Correct Incorrect
One container with compression enabled for heavy databases	Select Select Correct Incorrect
One container with deduplication enabled for full clone virtual desktops	Select Select Correct Incorrect
One container with Erasure Coding enabled for Hadoop	Select Select Correct Incorrect
One container with deduplication enabled for Hadoop	Select Select Correct Incorrect

**Answer:**

Procedure	Correct/Incorrect
One container with compression and deduplication enabled for full clone virtual desktops	Correct
One container with compression and Erasure Coding enabled for Hadoop	Incorrect
One container with compression enabled for heavy databases	Correct
One container with deduplication enabled for full clone virtual desktops	Select Select Correct Incorrect
One container with Erasure Coding enabled for Hadoop	Select
One container with deduplication enabled for Hadoop	Select

**Reference:**

Use Case	Example	Recommendation
User data	File server, user data vDisk	Post-process compression with 4–6 hour delay
VDI	VMware View, Citrix XenDesktop	VCAI snapshots, linked clones, full clones with inline deduplication No compression
Data processing	Hadoop, data analytics, data warehousing	Inline Compression
Transactional applications	Exchange, Active Directory, SQL Server, Oracle	Native application compression where available, otherwise inline compression
Archive or backup	Handy Backup, SyncBack	Inline compression unless data is already compressed

### NEW QUESTION: 57

A system administrator needs to shut down an AHV node in a Nutanix cluster without causing service disruption. The administrator checks data resiliency and verifies that the cluster can tolerate a node down.

Which three steps should the administrator perform next? (Choose three.)

Procedure	Step
Put the host in maintenance mode	Step 1 ▼
	Step 2 ▼
	Step 3 ▼
	Invalid Step ▼
	Invalid Step ▼
Shut down the CVM	Step 1 ▼
	Step 2 ▼
	Step 3 ▼
	Invalid Step ▼
	Invalid Step ▼
Shut down the node	Step 1 ▼
	Step 2 ▼
	Step 3 ▼
	Invalid Step ▼
	Invalid Step ▼
Power off the node	Step 1 ▼
	Step 2 ▼
	Step 3 ▼
	Invalid Step ▼
	Invalid Step ▼
Allow VMs to start on the remaining nodes	Step 1 ▼
	Step 2 ▼
	Step 3 ▼
	Invalid Step ▼
	Invalid Step ▼

**Answer:**

- 1 allow vms
- 2 sd CVM
- 3 sd node

**NEW QUESTION: 58**

An administrator needs to configure snapshots for DR scenarios. The databases get refreshed on Friday nights regularly. The search service application re-indexes the new application on Saturday nights regularly. The remaining front-end and middle tier VMs are static but do get minor version updates weekly.

The administrator needs to have 2 weeks of daily snapshots for all the VMs in an app group and 2 weeks application consist local snapshots only on Fridays, Saturdays and Sundays on the same group of VMs.

Which two options should the administrator use to configure snapshots?

- A.** Create one protection domain for all VMs in an application group with scheduled daily non-application consistent snapshots and another protection domain for all VMs in an application group with scheduled Friday, Saturday, Sunday application consistent snapshots.
- B.** Create two consistency groups in a protection domain, one for front-end and middle tier apps with no application consistency, one for database and Search apps with application consistency, and apply the correct schedule to both groups.
- C.** Create a schedule in a protection domain for all applicable VMs to snap daily with application consistency enabled with 6 days of retention and with no application consistency and 14 days local retention.

**Answer: C** ([LEAVE A REPLY](#))

#### NEW QUESTION: 59

An administrator is responsible for the following Nutanix Enterprise Cloud environment:

- \* A central datacenter with a 20-node cluster with 1.5PB of storage
- \* Five remote sites each with a 4-node cluster with 200TB storage

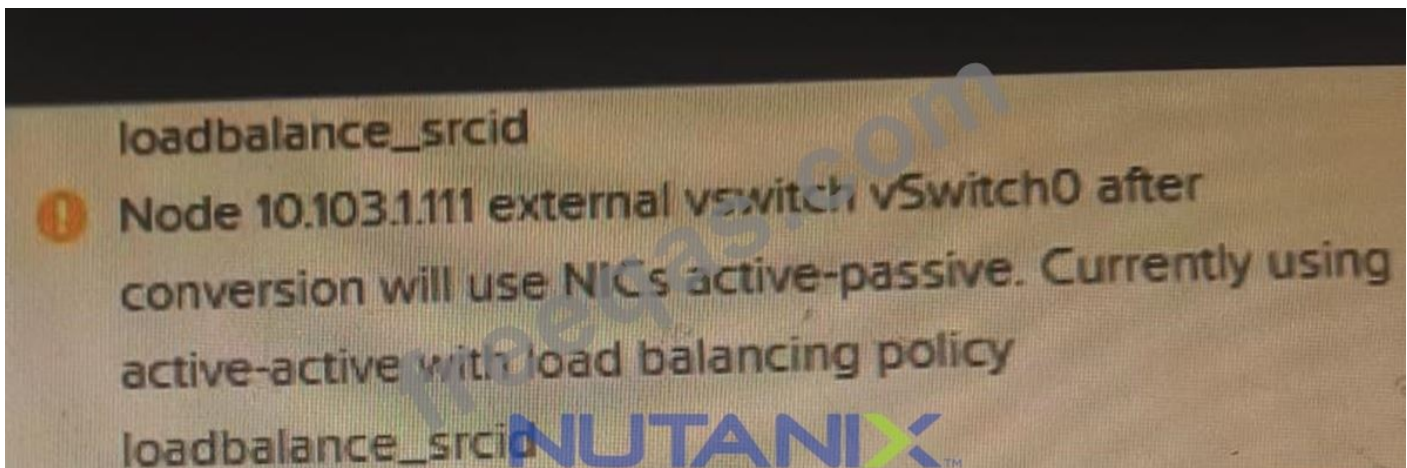
The remote sites are connected to the datacenter via 1GB links with an average latency of 6 ms RTT. What is the minimum RPO the administrator can achieve for this environment?

- A.** 15 minutes
- B.** 1 hour
- C.** 0 minutes
- D.** 6 hours

**Answer: A** ([LEAVE A REPLY](#))

#### NEW QUESTION: 60

Refer to the exhibit.



An administrator receive the warning messages shown in the exhibit while validating cluster conversion from EXSi to AHV.

What should the administrator do to address this warning in v Center Server?

- A. Keep active adapters of different speeds as active standby
- B. Keep homogeneous adapter as active and standby
- C. Remove adapters that are active but not homogeneous.
- D. Remove the standby adapters under Teaming and Failover.

**Answer: B (LEAVE A REPLY)**

#### NEW QUESTION: 61

A customer wants to run SAP HANA on a Nutanix cluster with the following characteristics:

- \* AHV nodes
- \* SAP HANA version 2
- \* Production database files

Which configuration should be recommended to the customer?

- A. Start with a cluster containing three or more nodes
- B. Enable only compression for the container that contains the Production database
- C. Do not enable compression, deduplication, or erasure coding on the storage container
- D. Place the SAP HANA Database on the same socket as CVM

**Answer: C (LEAVE A REPLY)**

Reference:



**Valid NCM-MCI-5.20 Dumps** shared by PrepPdf.com for Helping Passing NCM-MCI-5.20 Exam! PrepPdf.com now offer the **newest NCM-MCI-5.20 exam dumps**, the PrepPdf.com NCM-MCI-5.20 exam **questions have been updated** and **answers have been corrected** get the **newest** PrepPdf.com NCM-MCI-5.20 dumps with Test Engine here:

<https://www.preppdf.com/Nutanix/NCM-MCI-5.20-prepaway-exam-dumps.html> (166 Q&As Dumps, **40%OFF Special Discount: Exam-Tests**)

#### NEW QUESTION: 62

An administrator wants to view VMs with NGT Installed and Filter by their installed guest operating systems.

How can this task most quickly be accomplished within prism central?

- A. Use a pre-defined Prism Central report
- B. Create a customer Focus using the OS Column
- C. use the Prism central analysis Panel to create a pie chart by OSType
- D. In the VM dashboard , filter by the nutanix Guest tools - OS field

**Answer: D ([LEAVE A REPLY](#))**

#### **NEW QUESTION: 63**

A New Project is Being rolled out to an AHV Cluster being monitored by prism Central , The Application team indicated that the application managed by the project is very memory intensive . The administrator wants to be notified about any memory constraints should they occur. How would an administrator most effectively achieve this task?

- A. Create a Report to tracking the memory Usage
- B. Create a new metric chart for the cluster and analyse hypervisor Memory Usage
- C. Search for the VM , then in the details page , go to metrics an select CPU usage.
- D. Create a new alert policy for the memory Usage and set to critical after 80%.

**Answer: D ([LEAVE A REPLY](#))**

#### **NEW QUESTION: 64**

Which Component Allows you to pair sites for disaster Recovery Policy Creation Using Nutanix Leap?

- A. Protection Policies
- B. Availability Zones
- C. Protection Domains
- D. Recovery Plans

**Answer: ([SHOW ANSWER](#))**

#### **NEW QUESTION: 65**

Which Windows technology does AHV support to prevent authentication theft?

- A. Azure AD Multi-Factor
- B. Endpoint Manager
- C. Active Directory federation Services
- D. Windows Defender Credential Guard

**Answer: C ([LEAVE A REPLY](#))**

#### **NEW QUESTION: 66**

An organization subscribes to field advisories from the Nutanix support portal. An administrator receives an email about a rare problem that could cause cluster instability and affect the entire AOS cluster. The organization is running Vmware vsphere 6.x on Nutanix.

What action should be taken to resolve this issue?

- A. In Prism Central, select Life Cycle Management and perform LCM update.
- B. Use VMware Update Manager to update the cluster.

- C. File a ticket to Nutanix Support and provide the Field Advisory ID.
- D. Open Prism Element and select Upgrade Software to update AOS.

**Answer: A ([LEAVE A REPLY](#))**

#### **NEW QUESTION: 67**

An administrator has a custom backup application that requires a 2TB disk and runs in Windows. Throughput is considerably lower than expected.

The application was installed on a VM with the following configuration:

- \* Four vCPUs with one core/vCPU
- \* 4GB of Memory
- \* One 50GB vDisk for the Windows installation
- \* One 2TB vDisk for the application

What is the recommended configuration change to improve throughput?

- A. Span the 2TB disk across four vDisks
- B. Increase the vCPUs assigned to the VM
- C. Increase the number of cores per vCPU
- D. Add 4GB of memory to the VM

**Answer: A ([LEAVE A REPLY](#))**

#### **NEW QUESTION: 68**

Over the period of 2 to 3 weeks, a cluster displays the following:

- \* Periods where Warning Alerts of memory usage over 75% are asserted
- \* Periods where Critical Warnings of memory usage over 90% are asserted
- \* Periods of slow or frozen VDI desktops have caused work stoppage or slowdown
- \* VDI clones have periodically not powered up when called, causing work stoppage Which steps should be used to prioritize the administrator's troubleshooting efforts?

- A. \* Assess resource health on Hardware page
- \* Review the Analysis page for memory usage demand
- \* Determine the VDI workload-to-host affinity across the cluster
- B. \* Analyze Alert Pages for a root cause of memory problem
- \* Analyze VM table page to access the VM functionality
- \* Analyze the VDI Clone properties for possible VDI Workload stress
- C. \* Review Analysis Page for memory use pattern
- \* Alert with VDI workload demand
- \* Analyze current and future workload in the Capacity Runaway tab for sufficient resources
- D. \* Check Analysis page for CPU demand
- \* Verify VDI workload property for memory subscription
- \* Review the Hardware page to determine if the cluster has sufficient RAM

**Answer: C ([LEAVE A REPLY](#))**

#### **NEW QUESTION: 69**

An organizations Nutanix Cluster is based on VMware vSphere. The cluster is configured to download software updates automatically. The administration needs to verify and eventually upgrade VMware hypervisor via Prism UI.

After logging in to Prism, the administrator receives the message shown:

No available versions for upgrade

What is causing the current state?

- A. The environment is running the latest vSphere version, so no update is required.
- B. VMware support has expired, so downloads are not available.
- C. vSphere binaries need to be manually uploaded.
- D. The cluster is unable to connect to release-api.nutanix-ccm:8D.

**Answer: A (LEAVE A REPLY)**

#### **NEW QUESTION: 70**

What is required to successfully live migrate a VM Between two AHV clusters?

- A. Install and Configure the witness VM on a third Site.
- B. Stretch L2 networks across the primary and recovery sites
- C. Configure a Protection domain with synchronous replication
- D. Both clusters must be managed by the same prism central

**Answer: B (LEAVE A REPLY)**

#### **NEW QUESTION: 71**

An administrator needs to upgrade AOS for an air gapped cluster by using Prism Element.

Which two actions allow the administrator to perform the upgrade? Choose Two

- A. Use the LCM dark site Option Providing AOS Binaries
- B. Manually Upload AOS binaries and metadata
- C. Manually Upload Binaries to a local http server
- D. Extract the AOS binaries to the CVM

**Answer: A,B (LEAVE A REPLY)**

#### **NEW QUESTION: 72**

A VM is exhibiting one or more of the following baseline values based on the past 30 days:

- \* CPU usage < 20%
- \* CPU ready time < 5%
- \* Memory usage < 50% (moderately) or < 20% (severely)
- \* Memory swap rate = 0 Kbps

Which type of VM is being described?

- A. Constrained VM
- B. Inactive VM
- C. Bully VM
- D. Over-Provisioned VM

**Answer: (SHOW ANSWER)**

## Finding Waste and Right-Sizing VMs

The VM efficiency features in Prism Pro recommend VMs within the environment that are candidates for reclaiming unused resources that you can then return to the cluster. Click each tab to learn more.

### Overprovisioned

- An overprovisioned VM is the opposite of a constrained VM, meaning it is a VM that is over-sized and wasting resources which are not needed. A VM is considered over-provisioned when it exhibits one or more of the following baseline values, based on the past 30 days: CPU usage < 50% (moderate) or < 20% (severe) and CPU ready time < 5%, Memory usage < 50% (moderate) or < 20% (severe), and memory swap rate = 0 Kbps.

### Inactive

- A VM is inactive in either of the following states: A VM is considered dead when it has been powered off for at least 30 days. A VM is considered a zombie when it is powered on but does fewer than 30 read or write I/Os (total), and receives or transfers fewer than 1000 bytes per day for the past 30 days.

### Constrained

- A constrained VM is one that does not have enough resources for the demand and can lead to performance bottlenecks. A VM is considered constrained when it exhibits one or more of the following baseline values, based on the past 30 days: CPU usage > 90% (moderate), 95% (severe) CPU ready time > 5% , 10% Memory usage > 90%, 95%, Memory swap rate > 0 Kbps (no moderate value).

### Bully

- A **bully** VM is one that consumes too many resources and causes other VMs to starve. A VM is considered a **bully** when it exhibits one or more of the following conditions for over an hour: CPU ready time > 5%, memory swap rate > 0 Kbps, host I/O Stargate CPU usage > 85%.

### NEW QUESTION: 73

An administrator attempts to reinstall a VM's Guest OS but is unable to change the Legacy BIOS boot Priority.

Based on the exhibit, what is causing this issue?

- A. the VM is currently ON
- B. the CD-ROM is empty
- C. the VM is undergoing a snapshot
- D. GuestOS reinstall is not possible for a VM

**Answer: A (LEAVE A REPLY)**

### NEW QUESTION: 74

A company needs to replicate their VMs to a remote site and must have an RPO of less than 1 hour.

When creating a protection domain, what should an administrator do to meet this requirement?

- A. Enable Entity Sync on the designated VMs
- B. Enable Availability Zones and send the VM to multiple targets
- C. Enable Async Replication with an RPO of 60 minutes
- D. Enable Near-Sync Replication with an RPO of 15 minutes

**Answer: C ([LEAVE A REPLY](#))**

**NEW QUESTION: 75**

An Administrator needs to provide users access to prism Central Projects.

What Source of user accounts must the administrator Use?

- A. SAML2 Provider
- B. Open LDAP
- C. Active Directory
- D. Local Users

**Answer: ([SHOW ANSWER](#))**

**NEW QUESTION: 76**

A three-node cluster has a Nutanix Files instance with three FSVMs.

What happens after a node failure?

- A. The affected FSVM will be restarted on another node.
- B. The affected FSVM will get live-migrated to another node.
- C. The affected FSVM will not be restarted on another node due to its VM-to-VM anti-affinity settings.
- D. The affected FSVM will not be restarted on another node due to its agent VM setting.

**Answer: A ([LEAVE A REPLY](#))**

**Valid NCM-MCI-5.20 Dumps** shared by PrepPdf.com for Helping Passing NCM-MCI-5.20 Exam! PrepPdf.com now offer the **newest NCM-MCI-5.20 exam dumps**, the PrepPdf.com NCM-MCI-5.20 exam **questions have been updated** and **answers have been corrected** get the **newest** PrepPdf.com NCM-MCI-5.20 dumps with Test Engine here:  
<https://www.preppdf.com/Nutanix/NCM-MCI-5.20-prepaway-exam-dumps.html> (166 Q&As Dumps, **40%OFF Special Discount: Exam-Tests**)

**NEW QUESTION: 77**

An administrator is migrating 5MB shares from a third-party platform to Nutanix Files with the following characteristics:

- \* Shares contain user profile directories
- \* DFS-N will be used

How should the administrator create target shares for this migration?

- A. Create multiple distributed shares and distribute migrated data as evenly as possible.
- B. Create standard shares with multiple top-level directories and distribute migrated data.
- C. Create multiple general purpose shares and distribute migrated data as evenly as possible.
- D. Create distributed shares with multiple top-level directories and distribute migrated data.

**Answer: D ([LEAVE A REPLY](#))**

**Valid NCM-MCI-5.20 Dumps** shared by PrepPdf.com for Helping Passing NCM-MCI-5.20 Exam! PrepPdf.com now offer the **newest NCM-MCI-5.20 exam dumps**, the PrepPdf.com NCM-MCI-5.20 exam **questions have been updated** and **answers have been corrected** get the **newest** PrepPdf.com NCM-MCI-5.20 dumps with Test Engine here:  
<https://www.preppdf.com/Nutanix/NCM-MCI-5.20-prepaway-exam-dumps.html> (166 Q&As Dumps, **40%OFF** Special Discount: **Exam-Tests**)