

# Salesforce.Integration-Architecture-Designer.v2023-07-24.q104

<b>Exam Code:</b>	Integration-Architecture-Designer
<b>Exam Name:</b>	Salesforce Certified Integration Architecture Designer
<b>Certification Provider:</b>	Salesforce
<b>Free Question Number:</b>	104
<b>Version:</b>	v2023-07-24
<b># of views:</b>	1950
<b># of Questions views:</b>	1040
<a href="https://www.freeqas.com/qa/Salesforce/Integration-Architecture-Designer/Salesforce.Integration-Architecture-Designer.v2023-07-24.q104.html">https://www.freeqas.com/qa/Salesforce/Integration-Architecture-Designer/Salesforce.Integration-Architecture-Designer.v2023-07-24.q104.html</a>	

## NEW QUESTION: 1

Universal containers is building an integration between their instance of Salesforce and their business partner's fulfillment systems, the security officer would like to ensure that only the authorized data for each business partner is accessible across all interfaces.

How should the architect ensure this requirement is met?

- A. provide each business partner a shared integration username/password with a specific role/profile provisioned to the appropriate data.
- B. Provide each business partner their own username/password with an Apex custom web service to filter the data appropriately.
- C. Provide each business partner their own username/password with a shared integration profile provisioned to the appropriate data.
- D. Provide each business partner their own username/password with a specific role/profile provisioned to the appropriate data.

**Answer: D (LEAVE A REPLY)**

## NEW QUESTION: 2

Northern Trail Outfitters has a requirement to encrypt few of widely used standard fields. They also want to be able to use these fields in workflow rules.

Which security solution should an Integration Architect recommend to fulfill the business use case?

- A. Cryptography Class
- B. Data Masking
- C. Classic Encryption
- D. Platform Shield Encryption

**Answer: D (LEAVE A REPLY)**

Explanation

[https://help.salesforce.com/articleView?id=data\\_mask\\_overview.htm&type=5](https://help.salesforce.com/articleView?id=data_mask_overview.htm&type=5)

[https://help.salesforce.com/articleView?id=security\\_pe\\_vs\\_classic\\_encryption.htm&type=5](https://help.salesforce.com/articleView?id=security_pe_vs_classic_encryption.htm&type=5)

### **NEW QUESTION: 3**

A call center manager uses a custom dashboard to track Case related metrics. The manager wants a component to display the number of closed Cases in real time.

What type of event should be used to meet this requirement?

- A. Push Topic Event
- B. Change Data Capture Event
- C. Platform Event
- D. Generic Event

**Answer: A (LEAVE A REPLY)**

Explanation

[https://developer.salesforce.com/docs/atlas.en-](https://developer.salesforce.com/docs/atlas.en-us.api_streaming.meta/api_streaming/pushtopic_events_intro.htm)

[us.api\\_streaming.meta/api\\_streaming/pushtopic\\_events\\_intro.htm](https://developer.salesforce.com/docs/atlas.en-us.api_streaming.meta/api_streaming/pushtopic_events_intro.htm)

### **NEW QUESTION: 4**

Universal Containers is integrating their Salesforce platform with their on-premise ERP system. As part of the test class design DML operations are to be performed before making the test callout.

What capability does Salesforce provides to facilitate this?

- A. Perform the DML operation outside the Test.StartTest and Test.StopTest and make the callout outside of the Test.StartTest and Test.StopTest block.
- B. Perform the DML operation outside the Test.StartTest and Test.StopTest and make the callout with the Test.StartTest and Test.StopTest block.
- C. Perform the DML operation inside the Test.StartTest and Test.Stop Test and make the callout outside the Test.StartTest and Test.Stop Test block.
- D. Perform the DML operation within the Test.StartTest and Test.Stop Test and make the callout within Test.StartTest and Test.StopTest block.

**Answer: B (LEAVE A REPLY)**

### **NEW QUESTION: 5**

What should an integration Architect consider when building a visulaforce page that makes client-side callouts to multiple domains that may violate the browser's same-origin policy?

Choose 2 answers

- A. utilize the canvas SDK to perform the callouts.
- B. Set up Remote site settings for all domains that the client scripts communicate with.
- C. Ensure each javascript resource communicates only with its origin.
- D. Setup CORS to whitelist all domains that the client scripts communicate with.

**Answer: (SHOW ANSWER)**

**NEW QUESTION: 6**

Universal Containers requires Salesforce to send expense data to an accounting system. Each user has their own username/password credential to access the account system via integration. What is a recommended option for an integration approach from a security perspective?

- A. Use hierarchical custom settings to store the username/password allowing the Apex callout to read it.
- B. Fire outbound messages to a middleware that stores the credentials instead of an Apex callout.
- C. Set up a Per-User Named Credential and have the users each set up their username/password.
- D. Set up a Named-Principal Named Credential and have the administrator set up the username/password.

**Answer: C ([LEAVE A REPLY](#))**

**NEW QUESTION: 7**

Which mechanism should an Integration Architect recommend to make a secure, authenticated connection to a remote system that results in the remote system trusting Salesforce?

- A. Implement two way (or mutual) SSL certificates.
- B. Utilize CA - signed certificates on the host.
- C. Encrypt the Payload with a shared key.
- D. Use a pre-shared key in a query parameter.

**Answer: B ([LEAVE A REPLY](#))**

**NEW QUESTION: 8**

What are two considerations to make when performing SOAP callouts from within Apex?

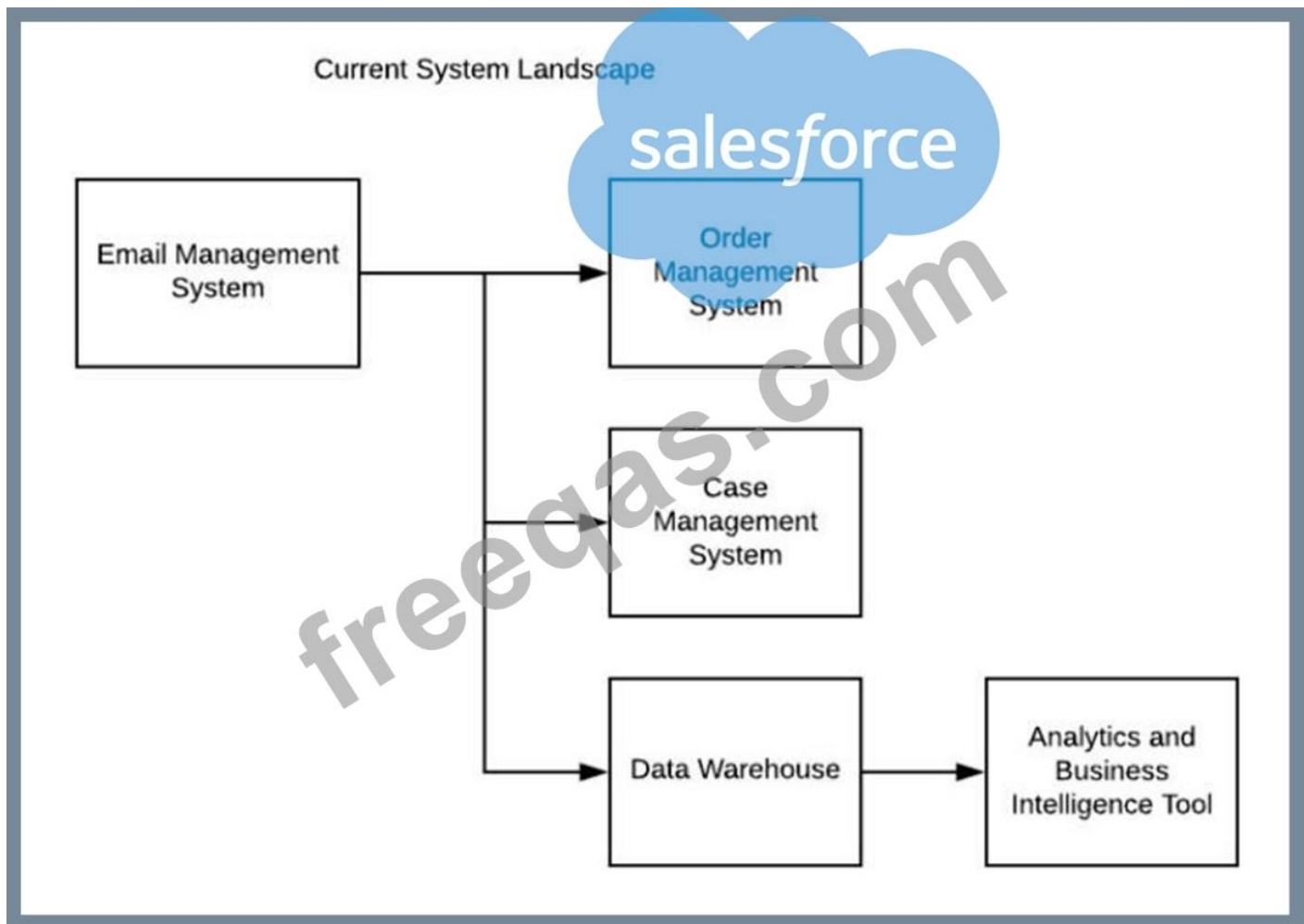
Choose 2 answers

- A. SOAP callouts cannot occur after any DML statements.
- B. WSDL2Apex can be used to generate stub code.
- C. SOAP callouts consume API limits.
- D. WSDL2Apex supports RPC-style SOAP callouts.

**Answer: ([SHOW ANSWER](#))**

**NEW QUESTION: 9**

An Enterprise Customer is planning to implement Salesforce to support case management. Below, is their current system landscape diagram.



Considering Salesforce capabilities, what should the Integration Architect evaluate when integrating Salesforce with the current system landscape?

- A. Integrating Salesforce with Order Management System, Email Management System and Case Management System.
- B. Integrating Salesforce with Order Management System, Data Warehouse and Case Management System.
- C. Integrating Salesforce with Data Warehouse, Order Management and Email Management System.
- D. Integrating Salesforce with Email Management System, Order Management System and Case Management System.

**Answer: C (LEAVE A REPLY)**

#### NEW QUESTION: 10

When user clicks Check Preferences as part of a Lightning flow in Salesforce, preferences from an externally hosted RESTful service are to be checked in real-time. The RESTful service has OpenAPI 2.0 JSON definitions, responding in data types of Boolean and string values.

Which integration pattern and mechanism should be selected to meet the conditions?

- A. Request-Reply: Enhanced External Services invokes a REST API.
- B. Data Virtualization: Salesforce Connect map data external REST data in external objects.
- C. Remote Call-In: Salesforce REST API with REST Composite Resources.

D. Fire and Forget: Process-driven platform events publishes events on Salesforce Event Bus.

**Answer: A ([LEAVE A REPLY](#))**

#### **NEW QUESTION: 11**

What are two benefits an Integration Architect should consider when recommending web-to-lead?

Choose 2 answers

- A. Web-to-Lead requests have their own limits separate from other APIs.
- B. Web-to-Lead is a simple way to capture responses to marketing landing pages.
- C. Web-to-Lead can be utilized for Lead data migrations.
- D. web-to-Lead can be used to de-duplicate leads during integrations.

**Answer: ([SHOW ANSWER](#))**

#### **NEW QUESTION: 12**

An Architect is asked to build a solution that allows a service to access Salesforce through the API. What is the first thing the Architect should do?

- A. Create a new user with System Administrator profile.
- B. Authenticate the integration using existing Single Sign-On.
- C. Authenticate the integration using existing Network-BasedSecurity.
- D. Create a special user solely for the integration purposes.

**Answer: D ([LEAVE A REPLY](#))**

#### **NEW QUESTION: 13**

Customer is evaluating Platform Events solution and would like help in comparing/contrasting it with Outbound Message for a real-time / near-real time needs. They expect 3,000 consumers of messages from Salesforce.

Which three considerations should be evaluated and highlighted when deciding between the solutions?

Choose 3 answers

- A. Both Platform Events and Outbound Message offer declarative means for asynchronous near-real time needs. They aren't best suited for real-time integrations.
- B. In both Platform Events and Outbound Messages, the event messages are retried by and delivered in sequence, and only once. Salesforce ensures there is no duplicate message delivery.
- C. Message sequence is possible in Outbound Message but not guaranteed with Platform Events. Both offer very high reliability. Fault handling and recovery are fully handled by Salesforce.
- D. Number of concurrent subscribers to Platform Events is capped at 2,000. An Outbound Message configuration can pass only 100 notifications in a single messages to a SOAP end point.
- E. Both Platform Events and Outbound Message are highly scalable. However, unlike Outbound Message, only Platform Events have Event Delivery and Event Publishing limits to be considered.

**Answer: B,D,E ([LEAVE A REPLY](#))**

Explanation

[https://developer.salesforce.com/docs/atlas.en-us.platform\\_events.meta/platform\\_events/platform\\_event\\_limits.h](https://developer.salesforce.com/docs/atlas.en-us.platform_events.meta/platform_events/platform_event_limits.h)  
[https://help.salesforce.com/articleView?id=workflow\\_om\\_considerations.htm&type=5](https://help.salesforce.com/articleView?id=workflow_om_considerations.htm&type=5)

#### **NEW QUESTION: 14**

Universal Containers would like to use a hard-coded username/password/security token of a user with a System Administrator profile to integrate its back-end system to Salesforce for inbound API calls.

Which two security issues are associated with this approach.

**A.** Unintended password resets will cause the integration to stop working and disrupt business processes.

**B.** Apex web services can execute with system privileges with such Salesforce credentials.

**C.** Unsecure storage of the credentials may result in hackers gaining unauthorized access to Salesforce.

**D.** All back-end systems get uncontrolled access to any data within the Salesforce environment.

**Answer: C,D ([LEAVE A REPLY](#))**

#### **NEW QUESTION: 15**

KiA B2C Enterprise Customer has the following use case that involves processing payment from an external payment gateway service in Salesforce.

1. Customer requests Customer Service Representative (CSR) for a Service upgrade.

2. Customer provides credit card details to CSR for payment.

3. CSR submits payment information in Salesforce, and processed in a

4. CSR receives confirmation of payment.

5. CSR upgrades service for customer and confirms Customer.

external payment gateway.

This use case requires the CSR to obtain confirmation of payment before upgrading the service.

The integration with Payment gateway needs to be reliable and monitored for audit purposes.

The payment gateway service is an external RESTful service that the B2C Enterprise Customer has subscribed for.

What should an Integration Architect recommend for this integration?

**A.** Use External Services feature to integrate gateway to Salesforce ensuring real-time updates the CSR and support post payment processes.

**B.** Make a callout to the payment gateway through ESB supporting error handling and logging for audit purposes.

**C.** Build a custom Apex Callout to external Payment gateway service and provide success message to the CSR, the details of callouts and responses are logged for audit purposes.

**D.** Platform events allow integration to payment gateway through the exchange of real-time event data, platform events are scalable and secure.

**Answer: ([SHOW ANSWER](#))**

### NEW QUESTION: 16

Universal Containers (UC) has multiple orgs with Sales and Service Cloud implementation to support different lines of business. UC is planning to consolidate Salesforce orgs to benefit from a 360-degree view of the customer based on revenue, support requests, and contracts.

What should an Architect recommend?

- A. Use a custom REST service for data cleaning and standardization.
- B. Use standard SOAP API for data cleaning and standardization.
- C. Use staging tables with an ETL tool for data cleaning and standardization.
- D. Use a custom SOAP service for data cleaning and standardization.

Answer: ([SHOW ANSWER](#))

**Valid Integration-Architecture-Designer Dumps** shared by PrepPdf.com for Helping Passing Integration-Architecture-Designer Exam! PrepPdf.com now offer the **newest Integration-Architecture-Designer exam dumps**, the PrepPdf.com Integration-Architecture-Designer exam **questions have been updated** and **answers have been corrected** get the **newest** PrepPdf.com Integration-Architecture-Designer dumps with Test Engine here: <https://www.preppdf.com/Salesforce/Integration-Architecture-Designer-prepaway-exam-dumps.html> (108 Q&As Dumps, **40%OFF Special Discount: Exam-Tests**)

### NEW QUESTION: 17

Universal Containers(UC) has a legacy application that tracks customer order status once the order has been sent to the fulfillment department this legacy application does not easily provide an API to integrate with Customer service reps need to be able t access the data from within Sales force and cannot be given separate logins to the application, UC does not have single-sign-on enabled.

How should an architect solve this problem?

- A. Leverage canvas to display the legacy application within Salesforce.
- B. Migrate the legacy application to Heroku and Integrate the database.
- C. use the Streaming API to receive order updates in real time.
- D. Create a web-tab in Salesforce directly to the legacy application.

Answer: ([SHOW ANSWER](#))

### NEW QUESTION: 18

Universal Containers (UC) has Salesforce integrated with their mainframe system. All the orders placed in Salesforce are sent to the mainframe system in a nightly batch process.

Which two capabilities are required for middleware to support this integration?

- A. Support for Metadata API
- B. Message queuing
- C. Synchronous transactions

D. Extract, transform, and load

**Answer: B,D ([LEAVE A REPLY](#))**

**NEW QUESTION: 19**

Universal Containers (UC) wants to start sharing some of the information collected from customers in Salesforce to other systems. UC wants to start sharing some sales data (orders) with a third-party application to help forecast inventory. This is a web application that supports SOAP and REST interfaces to send and receive data.

What is the recommended solution for integrating with this product?

- A. Utilize a third-party ETL tool to synchronize the data from Salesforce to the Forecasting application using the Bulk API.
- B. Configure an Outbound Message to send a SOAP call via a Workflow rule to the Forecasting application on close.
- C. Create a Submit to Forecast Button on the Order Page to send the data to the Web application via REST.
- D. Create an APEX trigger that makes the REST callout to the Forecasting application with the data when the deal closes.

**Answer: C ([LEAVE A REPLY](#))**

**NEW QUESTION: 20**

An Integration Architect has built a solution using REST API, updating Account, Contact, and other related information. The data volumes have increased, resulting in higher API calls consumed, and some days the limits are exceeded. A decision was made to decrease the number of API calls using bulk updates. The customer prefers to continue using REST API to avoid architecture changes.

Which REST API composite resources should the Integration Architect use to allow up to 200 records in one API call?

- A. SOject Collections
- B. SOject Tree
- C. Batch
- D. Composite

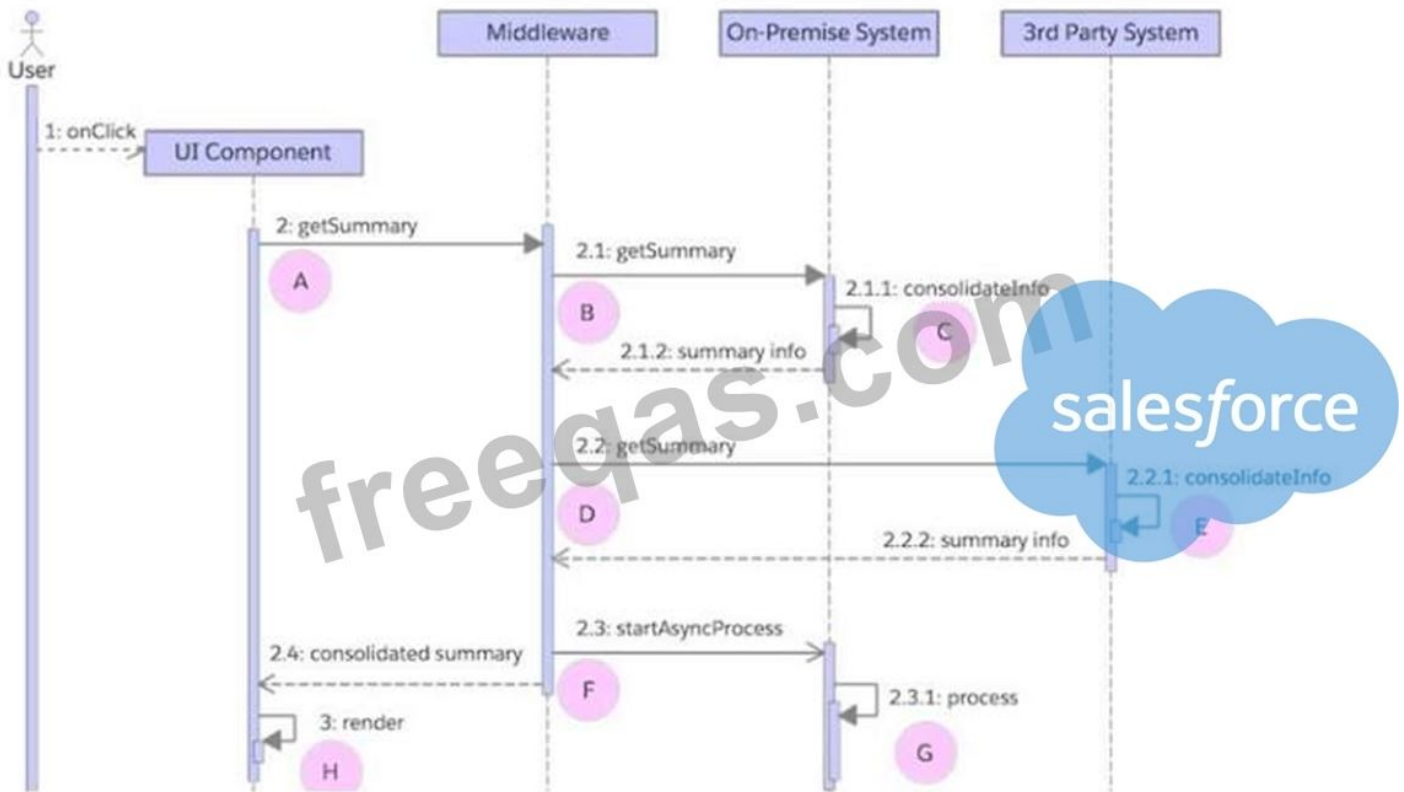
**Answer: ([SHOW ANSWER](#))**

Explanation

[https://developer.salesforce.com/docs/atlas.en-us.api\\_rest.meta/api\\_rest/resources\\_composite\\_subject\\_tree.htm](https://developer.salesforce.com/docs/atlas.en-us.api_rest.meta/api_rest/resources_composite_subject_tree.htm)

**NEW QUESTION: 21**

A company's cloud-based single page application consolidates data local to the application with data from on premise and 3rd party systems. The diagram below typifies the application's combined use of synchronous and asynchronous calls.



The company wants to use the average response time of its application's user interface as a basis for certain alerts. For this purpose, the following occurs:

1. Log every call's start and finish date and time to a central analytics data store.
2. Compute response time uniformly as the difference between the start and finish date and time - A to H in the diagram.

Which computation represents the end-to-end response time from the user's perspective?

- A.** Sum of A to H
- B.** Sum of A, G, and H
- C.** Sum of A to F
- D.** Sum of A and H

**Answer: D (LEAVE A REPLY)**

### NEW QUESTION: 22

Northern Trail Outfitters (NTO) leverages Sales Cloud for tracking and managing leads, accounts, contacts, and opportunities- Orders and order fulfillment is taken care of by an Order Management System (OMS) in the back-office. When an opportunity has changed it's status to "Closed/Won" and there are products attached, the details should be passed to the OMS for fulfillment operations.

The callout from Salesforce to the OMS should be synchronous.

What should an Integration Architect do to satisfy these requirements?

- A.** Build a Lightning Component that makes a synchronous Apex REST callout to the Order Management System when a button is clicked.

- B.** Use Process Builder to call an Apex proxy class to make a REST callout to the Order Management System.
- C.** Write a trigger that invokes an Apex proxy class to make a REST callout to the Order Management System.
- D.** Develop a batch Apex job that aggregates Closed Opportunities and makes a REST callout to the Order Management System hourly.

**Answer:** ([SHOW ANSWER](#))

### **NEW QUESTION: 23**

A company needs to be able to send data from Salesforce to a home grown system behind a corporate firewall.

The data needs to be pushed only one way and doesn't need to be sent in real time. The average volume is 2 million records per day.

What should an integration architect consider when choosing the right option in building the integration between the external system and Salesforce?

- A.** Due to high volume of records, number of concurrent requests can hit the limit for the REST API call to external system.
- B.** Due to high volume of records, the external system will need to use a BULK API Rest endpoint to connect to salesforce.
- C.** Due to high volume of records, salesforce will need to make a REST API call to external system.
- D.** Due to high volume of records, a third party integration tool is required to stage records off platform.

**Answer:** **D** ([LEAVE A REPLY](#))

### **NEW QUESTION: 24**

Which two requirements should the Salesforce Community Cloud support for self-registration and SSO?

Choose 2 answers

- A.** OpenId Connect Authentication Provider and Registration Handler
- B.** OpenId Connect Authentication Provider and just-in-time provisioning
- C.** SAML SSO and Registration Handler
- D.** SAML SSO and just-in-time provisioning

**Answer:** **A,D** ([LEAVE A REPLY](#))

### **NEW QUESTION: 25**

Universal containers has complex data transformation, error handling and process automation requirements as part of their integration strategy.

What technology should an Architect recommend in order to minimize Salesforce code customizations?

- A.** Data Loader

- B. Process Builder
- C. Middleware
- D. Canvas

**Answer: C ([LEAVE A REPLY](#))**

### **NEW QUESTION: 26**

An architect decided to use Platform Events for integrating Salesforce with an external system for a company.

Which three things should an architect consider when proposing this type of integration mechanism?

Choose 3 answers

- A. External system needs to have the same uptime in order to be able to keep up with Salesforce Platform Events.
- B. Salesforce needs to be able to store information about the external system in order to know which event to send out.
- C. To subscribe to an event, the integration user in Salesforce needs read access to the event entity.
- D. To publish an event, the integration user in Salesforce needs create permission on the event entity.
- E. Error handling must be performed by the remote service because the event is effectively handed off to the remote system for further processing.

**Answer: C,D,E ([LEAVE A REPLY](#))**

### **NEW QUESTION: 27**

A conglomerate is designing a Lightning Web Component (LWC) to display transactions aggregated from different sources. Their current system landscape is as follows:

1. Transactions are created at any time through their various on-premise and cloud-based systems.
2. All necessary transactions are replicated to a custom Transaction object in Salesforce. It is updated periodically so it only has a subset of the necessary transactions between updates.
3. Middleware supports publish-subscribe interactions and provides RESTful Enterprise APIs that can retrieve transactions from on-premise and cloud-based systems.

The company wants to address a usability concern regarding incomplete data displayed on the LWC component. What should the Integration Architect specify so the LWC will be able to display all the required transactions?

- A. Publish a Platform Event, have the middleware subscribe and update the custom object on receipt of Platform Event.
- B. Let the Lightning Data Service with a wire adapter display new values when the custom object records change.
- C. Call the Enterprise APIs directly from the LWC's JavaScript code and redisplay the LWC on receipt of the API response.

**D.** Use the Continuation class to call the Enterprise APIs and then process the response in a callback method.

**Answer: D** ([LEAVE A REPLY](#))

#### **NEW QUESTION: 28**

Universal Containers is planning to develop a native mobile app for their employees to interact with Salesforce.

Which two options should the Architect recommend?

- A.** Leverage Message Queue Product
- B.** Leverage Identity Product
- C.** Leverage SOAP API
- D.** Leverage REST API
- E.** Leverage Identity Product

**Answer: D** ([LEAVE A REPLY](#))

#### **NEW QUESTION: 29**

A large enterprise customer operating in a high regulated industry is planning to implement Salesforce for customer facing associates in both Sales and Service, and back office staff. The business processes that Salesforce supports are critical to the business.

Salesforce will be integrated to multiple back office systems to provide a single interface for associates.

Reliability and monitoring of these integrations is required as associates support customers.

Which integration solution should the architect consider when planning the implementation?

- A.** Build a custom integration gateway to support back office system integrations and ensure reliability and monitoring capabilities.
- B.** Architect Services in back office systems to support callouts from Salesforce and build reliability, monitoring and reporting capabilities.
- C.** Leverage Middleware for all back office system integrations ensuring real time alerting, monitoring and reporting capabilities.
- D.** Decouple back office system callouts into separate distinct services that have inbuilt error logging and monitoring frameworks.

**Answer: C** ([LEAVE A REPLY](#))

#### **NEW QUESTION: 30**

When a Sales Rep closes an opportunity in Salesforce, an Order should be created in Universal Containers' SAP system and the Sales Rep should be notified with an order number as soon as possible.

What is the recommended solution?

- A.** Apex callout from an update trigger with an opportunity page refresh using Streaming API.
- B.** Workflow Outbound message with an email notification on acknowledgement from SAP
- C.** Workflow Outbound message with an email notification on callback from SAP

D. Apex @ future callout from an update trigger with an opportunity page refresh using Streaming API.

**Answer: C (LEAVE A REPLY)**

### NEW QUESTION: 31

Universal Containers is a global financial company that sells financial products and services. There is a daily scheduled Batch Apex job that generates invoice from a given set of orders. UC requested building a resilient integration for this batch apex job in case the invoice generation fails.

What should an integration architect recommend to fulfill the requirement?

- A. Batch Retry & Error Handling report to monitor the error handling.
- B. Build Batch Retry & Error Handling in the middleware.
- C. Build Batch Retry & Error Handling in the Batch Apex Job itself.
- D. Build Batch Retry & Error Handling using BatchApexErrorEvent.

**Answer: D (LEAVE A REPLY)**

**Valid Integration-Architecture-Designer Dumps** shared by PrepPdf.com for Helping Passing Integration-Architecture-Designer Exam! PrepPdf.com now offer the **newest Integration-Architecture-Designer exam dumps**, the PrepPdf.com Integration-Architecture-Designer exam **questions have been updated** and **answers have been corrected** get the **newest** PrepPdf.com Integration-Architecture-Designer dumps with Test Engine here: <https://www.preppdf.com/Salesforce/Integration-Architecture-Designer-prepaway-exam-dumps.html> (108 Q&As Dumps, **40%OFF Special Discount: Exam-Tests**)

### NEW QUESTION: 32

Universal Containers wants to ensure Salesforce will only accept secure connections from their ETL tool.

How should calls to a custom Apex web service be secured?

- A. Profile Security
- B. VPN
- C. IP Whitelisting
- D. Two-way SSL

**Answer: D (LEAVE A REPLY)**

### NEW QUESTION: 33

A company wants to standardize exception tracking, handling, and analytics. Given the following actions:

1. Build a company wide logging service hosted on a middleware platform
2. Create case object records for exceptions based thresholds

3. Change all their Apex Loggers to publish Application Exceptions as custom Platform Events. Which two specifications should the integration architect include in the logging service architecture?

Choose 2 answers

- A. Create Salesforce Cases using the Salesforce REST, SOAP or Bulk API.
- B. Create Salesforce Cases conditionally using automatic Case creation rules.
- C. Subscribe to the Application Exceptions using the Salesforce Streaming API.
- D. Receive Application Events through Change Data Capture (CDC).

**Answer: A,B ([LEAVE A REPLY](#))**

#### **NEW QUESTION: 34**

Universal Containers (UC) uses Salesforce to track the following customer data:

1. Leads,
2. Contacts
3. Accounts
4. Cases

Salesforce is considered to be the system of record for the customer. In addition to Salesforce, customer data exists in an Enterprise Resource Planning (ERP) system, ticketing system, and enterprise data lake. Each of these additional systems have their own unique identifier. UC plans on using middleware to integrate Salesforce with the external systems.

UC has a requirement to update the proper external system with record changes in Salesforce and vice versa.

Which two solutions should an Integration Architect recommend to handle this requirement?

Choose 2 answers

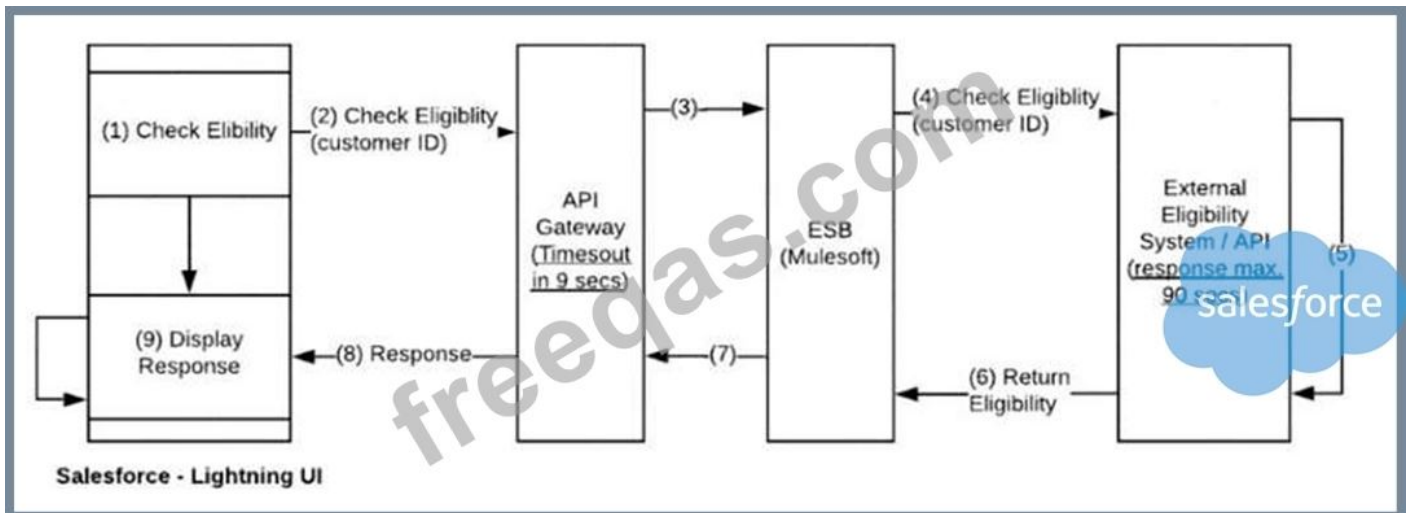
- A. Design an MDM solution that maps external ID's to the Salesforce record ID.
- B. Store unique identifiers in an External ID field in Salesforce and use this to update the proper records across systems.
- C. Locally cache external ID'S at the middleware layer and design business logic to map updates between systems.
- D. Use Change Data Capture to update downstream systems accordingly when a record changes.

**Answer: ([SHOW ANSWER](#))**

#### **NEW QUESTION: 35**

An enterprise architect has requested the Salesforce Integration architect to review the following (see diagram

& description) and provide recommendations after carefully considering all constraints of the enterprise systems and Salesforce platform limits.



\* About 3,000 phone sales agents use a Salesforce Lightning UI concurrently to check eligibility of a customer for a qualifying offer.

\* There are multiple eligibility systems that provides this service and are hosted externally. However, their current response times could take up to 90 seconds to process and return (there are discussions to reduce the response times in future, but no commitments are made).

\* These eligibility systems can be accessed through APIs orchestrated via ESB (MuleSoft).

\* All requests from Salesforce will have to traverse through customer's API Gateway layer and the API Gateway imposes a constraint of timing out requests after 9 seconds.

Which three recommendations should be made?

Choose 3 answers

**A.** When responses are received by Mule, create a Platform Event in Salesforce via Remote-Call-In and use the empAPI in the lightning UI to serve 3,000 concurrent users.

**B.** Recommend synchronous Apex call-outs from Lightning UI to External Systems via Mule and implement polling on API gateway timeout.

**C.** Implement a 'Check Update' button that passes a requestID received from ESB (user action needed).

**D.** ESB (Mule) with cache/state management to return a requestID (or) response if available from external system.

**E.** Use Continuation callouts to make the eligibility check request from Salesforce from Lightning UI at page load.

**Answer: (SHOW ANSWER)**

### NEW QUESTION: 36

A global financial company sells financial products and services that include the following:

1. Bank Accounts
2. Loans
3. Insurance

The company has a core banking system that is state of the art and is the master system to store financial transactions, financial products and customer information. The core banking system currently processes 10M financial transactions per day. The CTO for the company is considering

building a community port so that customers can review their bank account details, update their information and review their account financial transactions.

What should an integration architect recommend as a solution to enable customer community users to view their financial transactions?

- A. Use Salesforce Connect to display the financial transactions as an external object.
- B. Use Iframe to display core banking financial transactions data in the customer community.
- C. Use Salesforce Connect to display the financial transactions as an external object.
- D. Use Salesforce External Service to display financial transactions in a community lightning page.

**Answer: D ([LEAVE A REPLY](#))**

### **NEW QUESTION: 37**

Universal Containers is a global financial company that sells financial products and services including, bank accounts, loans, and insurance. UC uses Salesforce Service cloud to service their customer via calls, live chat.

The support agents would open bank accounts on the spot for customers who are inquiring about UC bank accounts.

UC Core banking system is the system of record for bank accounts and all accounts opened in salesforce have to be synced in real-time to the core banking system. Support agents need to inform the customers with the newly created bank account ID which has to be generated from the core banking system.

Which integration pattern is recommended for this use case?

- A. Use salesforce platform event.
- B. Use outbound message.
- C. Use streaming API to generate push topic.
- D. Use request and reply.

**Answer: D ([LEAVE A REPLY](#))**

### **NEW QUESTION: 38**

Universal Containers (UC) is a global financial company. UC support agents would like to open bank accounts on the spot for a customer who is inquiring ab UC products.

During opening the bank account process, the agents execute credit checks for the customers through external agencies. At a given time, up to 30 concurrent rewill be using the service for performing credit checks for customers.

What error handling mechanisms should be built to display an error to the agent when the credit verification process failed?

- A. Handle integration errors in the middleware in case the verification process is down, then the middleware should retry processing the request multiple times.
- B. In case the verification process is down, use fire and forget mechanism instead of request and reply to allow the agent to get the response back when the service is bar online.

**C.** Handle verification process error in the Verification Webservice API in case there is a connection issue to the Webservice if it responds with an error.

**D.** In case the verification process is down, Use mock service to send the response to the agent.

**Answer: C** ([LEAVE A REPLY](#))

#### **NEW QUESTION: 39**

The URL for an external service has been changed without prior notice. The service provides up to date money exchange rates that is accessed several times from Salesforce and is a business critical function for end users.

Which two solutions should an Integration Architect recommend be implemented to minimize potential downtime for users in this situation?

Choose 2 answers

**A.** Named Credentials

**B.** Remote Site Settings

**C.** Content Security Policies

**D.** Enterprise ESB

**Answer: A,B** ([LEAVE A REPLY](#))

Explanation

[https://help.salesforce.com/articleView?id=collab\\_files\\_overview.htm&type=5](https://help.salesforce.com/articleView?id=collab_files_overview.htm&type=5)

#### **NEW QUESTION: 40**

Northern Trail Outfitters (NTO) has recently changed their Corporate Security Guidelines. The guidelines require that all cloud applications pass through a secure firewall before accessing on-premise resources. NTO is evaluating middleware solutions to integrate cloud applications with on-premise resources and services.

What are two considerations an Integration Architect should evaluate before choosing a middleware solution?

Choose 2 answers

**A.** The middleware solution is able to interface directly with databases via an ODBC connection string.

**B.** The middleware solution is capable of establishing a secure API gateway between cloud applications and on-premise resources.

**C.** An API gateway component is deployable behind a Demilitarized Zone (DMZ) or perimeter network.

**D.** The middleware solution enforces the OAuth security protocol.

**Answer: B,C** ([LEAVE A REPLY](#))

#### **NEW QUESTION: 41**

Northern Trail Outfitters has had an increase in requests from other business units to integrate opportunity information with other systems from Salesforce. The developers have started writing

asynchronous @future callouts directly into the target systems. The CIO is concerned about the viability of this approach scaling for future growth and has requested a solution recommendation. What should be done to mitigate the concerns that the CIO has?

- A.** Refactor the existing future methods to use Enhanced External Services, import Open API 2.0 schemas and update flows to use services instead of Apex.
- B.** Implement an ETL tool and perform nightly batch data loads to reduce network traffic using last modified dates on the opportunity object to extract the right records.
- C.** Implement an Enterprise Service Bus for service orchestration, mediation, routing and decouple dependencies across systems.
- D.** Develop a comprehensive catalog of Apex classes to eliminate the need for redundant code and use custom metadata to hold the endpoint information for each integration.

**Answer: A (LEAVE A REPLY)**

#### **NEW QUESTION: 42**

Universal Containers is building an integration from their employee portal to Salesforce Chatter. They would like their employee portal to read and write to the Chatter API on behalf of the employee using the portal.

What is the correct way to authenticate to the Chatter API to meet this requirement?

- A.** Use a Chatter API integration user which authenticates to Salesforce using OAuth.
- B.** Use a Chatter API integration user which authenticates to Salesforce using Enterprise WSDL login().
- C.** Use OAuth which will pass their portal credentials to the Chatter API.
- D.** Use OAuth to authorize the portal to access the Chatter API on behalf of the user.

**Answer: A (LEAVE A REPLY)**

#### **NEW QUESTION: 43**

Universal Containers is building a managed package to distribute on the AppExchange. As part of the solution they would like to include authentication information (username/password) inside of the package for web service calls made from the package Universal Containers web services. A Salesforce security review has flagged this as a security violation and the architect must decide how best to protect these credentials. Which two methods should the architect consider in order to protect these credentials?

Choose 2 answers

- A.** Utilize protected custom settings to store the username/password of the web service endpoint.
- B.** Utilize a custom object with an encrypted text field to store the username/password of the web service endpoint.
- C.** Utilize named credentials to store the username/password of the web service endpoint.
- D.** Store the username/password directly in the Apex class that will be obfuscated in the managed package.

**Answer: (SHOW ANSWER)**

**NEW QUESTION: 44**

Universal containers merges with planetary shipping both companies use Salesforce for order processing and they decide to consolidate for processes. universal containers has well-established channels for receiving orders, so they decide to use Universal containers org for receiving and pre-processing of orders and Planetary Shipping's org for processing and fulfillment of orders.

What is the best way to integrate the business processes of the companies?

- A. Use a Middleware tool to pull orders from Universal Containers and push to Planetary Shipping.
- B. Use Apex callout to push orders from universal Containers to Planetary Shipping
- C. Use salesforce-to-Salesforce integration between Universal containers and Planetary shipping
- D. Use Outbound messages to send orders from Universal Containers to Planetary shipping.

**Answer: A ([LEAVE A REPLY](#))**

**NEW QUESTION: 45**

Universal Containers is building an integration between Salesforce and their Accounting system. The integration will utilize outbound messaging with call back pattern to Salesforce. The security officer would like to understand the authentication solution.

What are the three ways that the call back can authenticate itself to Salesforce?

Choose 3 answers

- A. Utilize the partner WSDL with oAuth to obtain a valid oAuth token for the session ID.
- B. Utilize the REST API login() operation to obtain a new session ID
- C. Utilize the session ID contained within the outbound message notification as the authorization header.
- D. Utilize the Enterprise WSDL login() operation to obtain a new session ID.
- E. Utilize an oAuth Username-Password flow to obtain a new oAuth token for the session ID.

**Answer: ([SHOW ANSWER](#))**

**NEW QUESTION: 46**

Universal Containers wants to gather information from a third-party application to update shipping information for an order inside Salesforce. A salesperson could trigger an update and the user interface would refresh with the current status.

Which are two recommended options for this when utilizing a Remote Process Invocation-Request and Reply pattern?

- A. A batch Apex job that performs an Apex SOAD or HTTP callout in a synchronous manner.
- B. A trigger that's invoked from Salesforce Data changes, performs and Apex SOAP in a synchronous manner
- C. A custom Visualforce page or button that initiates an Apex SOAP callout in a synchronous manner.
- D. A custom Visualforce page or button that initiates an Apex REST callout in a synchronous manner.

**Answer: C,D ([LEAVE A REPLY](#))**

**Valid Integration-Architecture-Designer Dumps** shared by PrepPdf.com for Helping Passing Integration-Architecture-Designer Exam! PrepPdf.com now offer the **newest Integration-Architecture-Designer exam dumps**, the PrepPdf.com Integration-Architecture-Designer exam **questions have been updated** and **answers have been corrected** get the **newest** PrepPdf.com Integration-Architecture-Designer dumps with Test Engine here: <https://www.preppdf.com/Salesforce/Integration-Architecture-Designer-prepaway-exam-dumps.html> (108 Q&As Dumps, **40%OFF Special Discount: Exam-Tests**)

**NEW QUESTION: 47**

An insurance company decides to build an online portal using the Salesforce platform for receiving quote requests from customers. The company has a legacy quoting system that will generate quotes while the rest of the sales process is managed by Salesforce Sales Cloud. The legacy system has an API for creating quotes.

What Implementation method should be used so that customers can request quotes online and receive them in real time?

- A. Outbound message to send quote requests from Salesforce to the legacy system.
- B. Middleware tool to pull quote requests from SF and push to the legacy system.
- C. Apex callout to send quote requests from Salesforce to the legacy System.
- D. Trigger with an @Future method to send quote requests to the legacy system.

**Answer: ([SHOW ANSWER](#))**

**NEW QUESTION: 48**

Universal Containers is using Sales Cloud with Order Capture. It has been integrated with an SAP system for Order fulfillment. The SAP system sends the Order status updates to Salesforce on a nightly basis. The SAP system tracks Order status more granularly than required by Salesforce.

Which two options should an Architect recommend to address different statuses in Salesforce and SAP?

- A. ETL Change Data Capture interface to send only required status updates to Salesforce.
- B. ETL change Data capture interface transforms the SAP order statuses to Salesforce order status.
- C. Create a batch Apex to run on a daily basis, which converts order status to pre-defined order status.
- D. Update the SAP Order fulfillment process to match Salesforce Order Statuses against the SAP order status.

**Answer: ([SHOW ANSWER](#))**

**NEW QUESTION: 49**

Universal Containers (UC) has third-party MDM database which is responsible for maintaining the data for Customer and Contacts information for its organization. UC wants to keep this information up-to-date in Salesforce so that the information is as current as possible. UC wants to provide bi-directional synchronization of the data between the MDM and Salesforce.

What is the recommended approach to solving this problem?

- A.** Modify the MDM database application to send and receive updates to and from Salesforce via REST or SOAP as they occur.
- B.** Implement a third-party middleware tool to maintain the synchronization between Salesforce and the MDM database as they occur.
- C.** Create a Batch process that runs every 5 minutes to pull the changes from MDM and any updates from Salesforce.
- D.** Create a VisualForce page for Accounts/Contacts that will pull the data from MDM, display it, and send any changes from Salesforce.

**Answer:** ([SHOW ANSWER](#))

**NEW QUESTION: 50**

Universal containers decided to use Salesforce sales cloud for their sales processes won Opportunities must be sent to external ERP system for order fulfillment. All the line items must also be sent along with Opportunities. The ERP system supports only SOAP- based messages for receiving orders What limitation of outbound messages might present a problem in this scenario?

- A.** Outbound messaging does not support SOAP
- B.** Outbound messaging cannot be made secure
- C.** Outbound messaging does not support multiple objects
- D.** Outbound messaging does not offer any reliability.

**Answer:** ([SHOW ANSWER](#))

**NEW QUESTION: 51**

Northern Trail Outfitters needs to present shipping costs and estimated delivery times to their customers.

Shipping services used vary by region, and have similar but distinct service request parameters. Which integration component capability should be used?

- A.** Outbound Messaging to request costs and delivery times from Shipper delivery services with automated error retry.
- B.** Enterprise Service Bus to determine which shipping service to use, and transform requests to the necessary format.
- C.** Enterprise Service Bus user interface to collect shipper-specific form data.
- D.** APEX REST Service to implement routing logic to the various shipping service.

**Answer:** **B** ([LEAVE A REPLY](#))

**NEW QUESTION: 52**

Which two options should be considered to permit automatic retry of failed updates when loading data into Salesforce?

Choose 2 answers

- A. Bulk API with serial option.
- B. Bulk API with parallel option.
- C. Standard API with serial option.
- D. Standard API with parallel option.

**Answer: A,B ([LEAVE A REPLY](#))**

**NEW QUESTION: 53**

A company accepts payment requests 24x7. Once they accept a payment request, their service level agreement (SLA) requires them to make sure each payment request is processed by their Payment System. They track payment requests using a globally unique identifier created at the Data Entry Point. Their simplified flow is as shown in the diagram.

They encounter intermittent update errors when two or more processes try to update the same Payment Request record at the same time.

Which two recommendations should an integration architect make to improve their SLA and update conflict handling?

Choose 2 answers

- A. Payment System and Middleware should automatically retry requests.
- B. Middleware should coordinate request delivery and payment processing.
- C. Payment System should process a payment request only once.
- D. Data Entry Point and Middleware should automatically retry requests.

**Answer: ([SHOW ANSWER](#))**

**NEW QUESTION: 54**

Universal Containers (UC) wants to connect their on-premise ERP system to view Order data in Salesforce.

UC is considering a solution to integrate the on-premise system using Salesforce Connect via OData.

Which three considerations should an Architect keep in mind when recommending use of Salesforce Connect?

- A. Customer needs to query small amounts of data at any time and display using a related list.
- B. Customer wants the ability to query external data using Global Search and reports.
- C. Customer has a large amount of data that they do not want to load into Salesforce.
- D. Customer wants to create a master-detail relationship between Opportunity and the external object.
- E. Customer does not want real-time access to the ERP data and is willing to wait for hourly refreshes.

**Answer: A,B,C ([LEAVE A REPLY](#))**

**NEW QUESTION: 55**

Universal containers has used Outbound Messaging to integrate with their billing system. Their billing system has frequent outages that don't last more than a couple of hours.

Which two aspects of Outbound Messaging might the customer experience issues with as a result of these outages?

Choose 2 answers

- A. Out-of-order delivery.
- B. Orphaned Requests
- C. Duplicate messages
- D. Exceeding Governor Limits.

**Answer: C,D ([LEAVE A REPLY](#))**

**NEW QUESTION: 56**

What are two reasons an existing custom field cannot be marked as External ID?

Choose 2 answers

- A. Maximum number of fields of an object has been reached.
- B. Maximum number of External IDs allowed on an object has been reached,
- C. Maximum number of indexes allowed on an object has been reached.
- D. Maximum number of skinny tables has been reached.

**Answer: ([SHOW ANSWER](#))**

**NEW QUESTION: 57**

Northern Trail Outfitters is in the final stages of merging two Salesforce orgs but needs to keep the retiring org available for a short period of time for lead management as it is connected to multiple public web site forms.

The sales department has requested that new leads are available in the new Salesforce instance within 30 minutes.

Which two approaches will require the least amount of development effort?

Choose 2 answers

- A. Call the Salesforce REST API to insert the lead into the target system.
- B. Use the Composite REST API to aggregate multiple leads in a single call.
- C. Use the tooling API with Process Builder to insert leads in real time.
- D. Configure named credentials in the source org.

**Answer: ([SHOW ANSWER](#))**

**NEW QUESTION: 58**

Northern Trail Outfitters is seeking to improve the performance and security of outbound integrations from Salesforce to on-premise servers.

What should the Architect consider before recommending a solution?

- A. External gateway products in use

- B. Shield Platform Encryption Limitations
- C. Considerations for using Deterministic Encryption
- D. A Default gateway restrictions

**Answer: A ([LEAVE A REPLY](#))**

**NEW QUESTION: 59**

Universal Containers (UC) would like to provide near real-time updates on their customer-facing external portal when a Sales Manager approves a new feature that is recommended by a customer. UC has no middleware, and the portal exposes a REST API therefore, UC is considering a custom-built system process to handle the integration.

What is the recommended approach for the custom-built system process to retrieve updates in near real-time?

- A. Leverage an outbound message to the portal whenever an idea is voted on the saved.
- B. Leverage a Streaming API client to subscribe to the related push topic.
- C. Leverage a related push topic that pushed information to the portal client.
- D. Leverage Canvas to send information to the portal whenever an idea is voted on.

**Answer: B ([LEAVE A REPLY](#))**

**NEW QUESTION: 60**

Universal Containers wishes to validate street addresses in Salesforce against their legacy Accounting system, which is the system of record. Retrieving an Account record in this system takes 7-12 seconds per query, and the address must be validated as quickly as possible to ensure proper order processing.

What integration pattern should an Architect suggest?

- A. Outbound Message with a Callback.
- B. Nightly batch validating records modified the previous day.
- C. @Future method with an Apex callout.
- D. Remote Invocation initiated by Middleware

**Answer: ([SHOW ANSWER](#))**

**NEW QUESTION: 61**

Northern Trail Outfitters wants to improve the quality of call-outs from Salesforce to their REST APIs. For this purpose, they will require all API clients/consumers to adhere to REST API Markup Language (RAML) specifications that include field-level definition of every API request and response payload. RAML specs serve as interface contracts that Apex REST API Clients can rely on.

Which two design specifications should the Integration Architect include in the integration architecture to ensure that Apex REST API Clients unit tests confirm adherence to the RAML specs?

Choose 2 answers

- A. Call the Apex REST API Clients in a test context to get the mock response.

- B. Call the HttpCalloutMock implementation from the Apex REST API Clients.
- C. Implement HttpCalloutMock to return responses per RAML specification.
- D. Require the Apex REST API Clients to implement the HttpCalloutMock.

**Answer: ([SHOW ANSWER](#))**

**Valid Integration-Architecture-Designer Dumps** shared by PrepPdf.com for Helping Passing Integration-Architecture-Designer Exam! PrepPdf.com now offer the **newest Integration-Architecture-Designer exam dumps**, the PrepPdf.com Integration-Architecture-Designer exam **questions have been updated** and **answers have been corrected** get the **newest** PrepPdf.com Integration-Architecture-Designer dumps with Test Engine here: <https://www.preppdf.com/Salesforce/Integration-Architecture-Designer-prepaway-exam-dumps.html> (108 Q&As Dumps, **40%OFF Special Discount: Exam-Tests**)

**NEW QUESTION: 62**

An Architect is required to integrate with an External Data Source via a Named Credential with an Apex callout due to technical constraints.

How is authentication achieved?

- A. Handle authentication with login flows.
- B. Handle authentication in the code.
- C. Connect via Salesforce Connect.
- D. Connect via Communities.

**Answer: C ([LEAVE A REPLY](#))**

Explanation

[https://help.salesforce.com/articleView?id=named\\_credentials\\_define.htm&type=5](https://help.salesforce.com/articleView?id=named_credentials_define.htm&type=5)

**NEW QUESTION: 63**

Northern Trail Outfitters has a registration system that is used for workshops offered at its conferences.

Attendees use a Salesforce community to register for workshops, but the scheduling system manages workshop availability based on room capacity. It is expected that there will be a big surge of requests for workshop reservations when the conference schedule goes live.

Which integration pattern should be used to manage the influx in registrations?

- A. Remote Process Invocation-Fire and Forget
- B. Batch Data Synchronization
- C. Remote Call-In
- D. Remote Process Invocation-Request and Reply

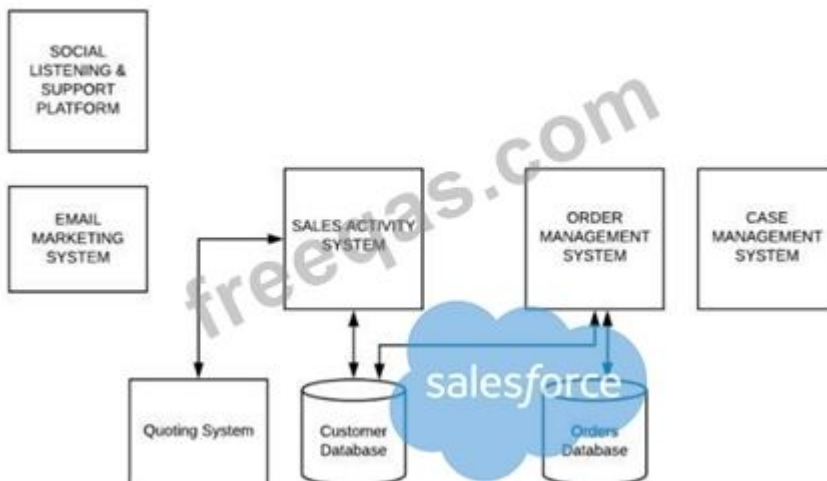
**Answer: ([SHOW ANSWER](#))**

**NEW QUESTION: 64**

A large B2C customer is planning to implement Salesforce CRM to become a Customer centric enterprise.

Below, is their current system landscape diagram.

Current System Landscape



The goals for implementing Salesforce follows:

1. Develop a 360 view of customer
2. Leverage Salesforce capabilities for Marketing, Sales and Service processes
3. Reuse Enterprise capabilities built for Quoting and Order Management processes Which three systems from the current system landscape can be retired with the implementation of Salesforce?

Choose 3 answers

- A. Email Marketing System
- B. Order Management System
- C. Sales Activity System
- D. Quoting System
- E. Case Management System

**Answer: A,C,E (LEAVE A REPLY)**

### NEW QUESTION: 65

Universal Containers has decided that acquisition of other companies will be a key focus of their growth for the next several years. All acquired customer service agents will use UC's pre-existing customer support process built in Salesforce. the ERP application at any acquired company will not be immediately replaced, and customer service agents must be able to see up-to-date order status from all ERP systems.

What recommendation should a technical Architect make to minimize complexity during new acquisitions?

- A. Use an ESB to abstract the Salesforce integration from other enterprise applications.
- B. Leverage Apex callouts to integrate directly with acquired applications.
- C. Use custom Links to direct users to the appropriate ERP system to view order status.
- D. Build all Integrations as nightly ETL batches to minimize real-time overhead.

**Answer: (SHOW ANSWER)**

**NEW QUESTION: 66**

Universal Containers (UC) currently owns a middleware tool and they have developed an API-led integration architecture with three API tiers. The first tier interfaces directly with the systems of engagement, the second tier implements business logic and aggregates data, while the third tier interfaces directly with systems of record. Some of the systems of engagement will be a mobile application, a web application, and Salesforce.

UC has a business requirement to return data to the systems of engagement in different formats while also enforcing different security protocols.

What should an Integration Architect recommend to meet these requirements?

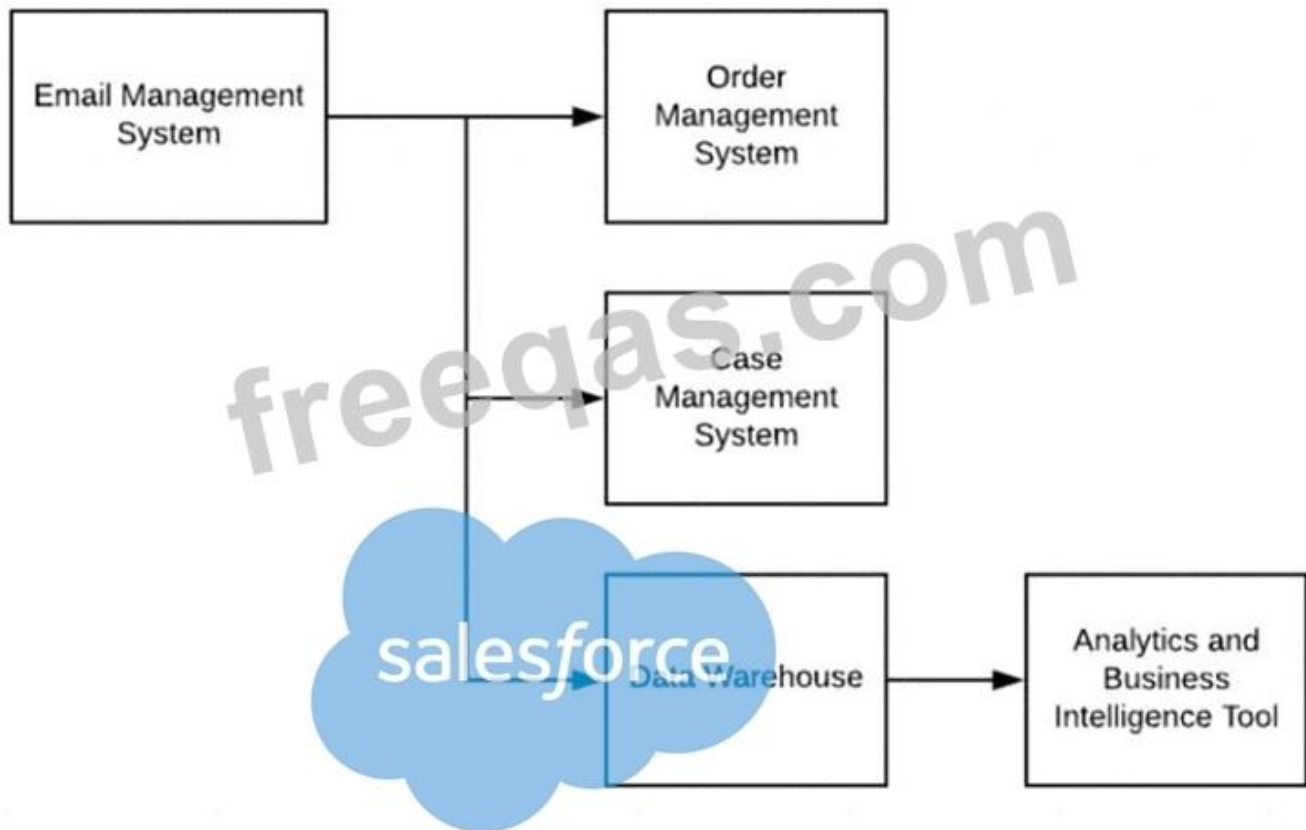
- A.** Enforce separate security protocols and return formats at the second tier of the API-led architecture.
- B.** Leverage an Identity Provider solution that communicates with the API tiers via SAML
- C.** Enforce separate security protocols and return formats at the first tier of the API-led architecture.
- D.** Implement an API gateway that all systems of engagement must interface with first.

**Answer: D** ([LEAVE A REPLY](#))

**NEW QUESTION: 67**

An Enterprise Customer is planning to implement Salesforce to support case management. Below, is their current system landscape diagram.

### Current System Landscape



Considering Salesforce capabilities, what should the Integration Architect evaluate when integrating Salesforce with the current system landscape?

- A. Integrating Salesforce with Data Warehouse, Order Management and Email Management System.
- B. Integrating Salesforce with Email Management System, Order Management System and Case Management System.
- C. Integrating Salesforce with Order Management System, Data Warehouse and Case Management System.
- D. Integrating Salesforce with Order Management System, Email Management System and Case Management System.

**Answer:** ([SHOW ANSWER](#))

### NEW QUESTION: 68

Universal Containers has decided that they will be using the bulk API to migrate the existing data into Salesforce as they will be importing a total of 80 million records.

While planning for the data migration, what techniques should the Architect recommend to make sure the load go according to schedule?

Choose 2 answers

- A. Perform loads over a weekend server resource availability.
- B. Perform a test load using a full Sandbox prior to the Production load.

- C. Leverage several workstations, loading different objects simultaneously.
- D. Pre-process data that the triggers and workflows can be deactivated.

**Answer: B,D ([LEAVE A REPLY](#))**

### **NEW QUESTION: 69**

Universal Containers send quotes to customers periodically when the customer contract is near expiration.

Quoting is generated by an external quoting engine. The VP recommends that the quote-generated request should be sent one week prior to the contract expiration. The Quote engine requires the latest account, contact, and contract information from Salesforce to generate the quote.

What is the recommended solution?

- A. Workflow-initiated alert to the Sales Rep, who will submit a request from a custom controller in a Visualforce page.
- B. A scheduled batch Apex to gather additional information from Salesforce and make a sync callout to the quote engine.
- C. Workflow-initiated Apex to gather additional information from Salesforce and make a sync callout to the quote engine.
- D. Workflow-initiated outbound message with a callback to gather additional information from Salesforce.

**Answer: ([SHOW ANSWER](#))**

### **NEW QUESTION: 70**

A large enterprise customer has decided to implement Salesforce as their CRM. The current system landscape includes the following:

1. An Enterprise Resource Planning (ERP) solution that is responsible for Customer Invoicing and Order fulfillment.
2. A Marketing solution they use for email campaigns.

The enterprise customer needs their sales and service associates to use Salesforce to view and log their interactions with customers and prospects in Salesforce.

Which system should be the System of record for their customers and prospects?

- A. ERP with all prospect data from Marketing and Salesforce.
- B. Marketing with all customer data from Salesforce and ERP.
- C. Salesforce with relevant Marketing and ERP information.
- D. New Custom Database for Customers and Prospects.

**Answer: ([SHOW ANSWER](#))**

Explanation

<https://www.workfront.com/blog/systems-of-record>

### **NEW QUESTION: 71**

Universal Containers (UC) ships millions of orders per year and releases code fixes to the Production org nightly. Their corporate testing strategy requires that tests must be performed against Production data in an isolated test environment before code can be released to Production. How can UC achieve this requirement?

- A.** Use Salesforce-to-Salesforce to keep data synchronized between Production and Full Sandboxes
- B.** Request that Salesforce schedule a Full Sandbox refresh on a nightly basis
- C.** Utilize a middleware solution and bulk API to do a nightly sync from Production to Full Sandbox
- D.** Create Apex unit tests so testing can be done against Production data, but rolled back before being committed

**Answer: C** ([LEAVE A REPLY](#))

### **NEW QUESTION: 72**

Universal Containers sells its products online using a system built on Force.com sites. The orders are captured and processed in Salesforce. The company uses an external marketing system and would like to make use of the customer data captured in Salesforce. The marketing system has REST API that can be used to push data into it.

Which three options should a Technical Architect consider that do not require building custom web services on the marketing system?

Choose 3 answers

- A.** Write a custom Apex web service, which will be called from the marketing system to retrieve customer data.
- B.** Build a custom Java application using the Enterprise WSDL to pull data from Salesforce and push it to the marketing system.
- C.** Use a middleware tool to pull customer data from Salesforce and push it to the marketing system on a daily basis.
- D.** Use outbound messages to send customer data from Salesforce to the marketing system.
- E.** Use Apex callout to send customer data from Salesforce to the marketing system

**Answer: A,D,E** ([LEAVE A REPLY](#))

### **NEW QUESTION: 73**

A healthcare services company maintains a Patient Prescriptions System that has 50+ million records in a secure database. Their customer base and data set are growing rapidly. They want to make sure that the following policies are enforced:

1. Identifiable patient prescriptions must exist only in their secure system's database and encrypted at rest.
2. Identifiable patient prescriptions must be made available only to people explicitly authorized in the Patient Prescriptions System: assigned nurses and doctors, patient, and people explicitly the patient may authorize.
3. Must be available only to verified and pre-approved people or legal entities.

To enable this, the company provides the following capabilities:

1. One-time use identity tokens for patients, nurses, doctors, and other people that expire within a few minutes.
2. Certificates for legal entities.
- . RESTful services.

The company has a Salesforce Community Cloud portal for patients, nurses, doctors, and other authorized people. A limited number of employees analyze de identified data in Einstein Analytics.

Which two capabilities should the integration architect require for the Community Cloud portal and Einstein Analytics?

Choose 2 answers

- A. Bulk load for Einstein Analytics
- B. Encryption in transit and at rest
- C. Identity token data storage
- D. Callouts to RESTful services

**Answer: A,D ([LEAVE A REPLY](#))**

#### **NEW QUESTION: 74**

Universal Containers (UC) is a leading provider of management training globally, UC requested students course registration data generated from the Salesforce student community to be synced with the learning management system (LMS). Any update to the course registration data needs to be reflected in the LMS.

Which integration mechanism should be used to meet the requirement?

- A. Streaming API
- B. Outbound Message
- C. Platform Event
- D. Change Data Capture (CDC)

**Answer: ([SHOW ANSWER](#))**

#### **NEW QUESTION: 75**

What are two benefits of canvas that an Integration Architect should consider when exposing external systems from within Salesforce?

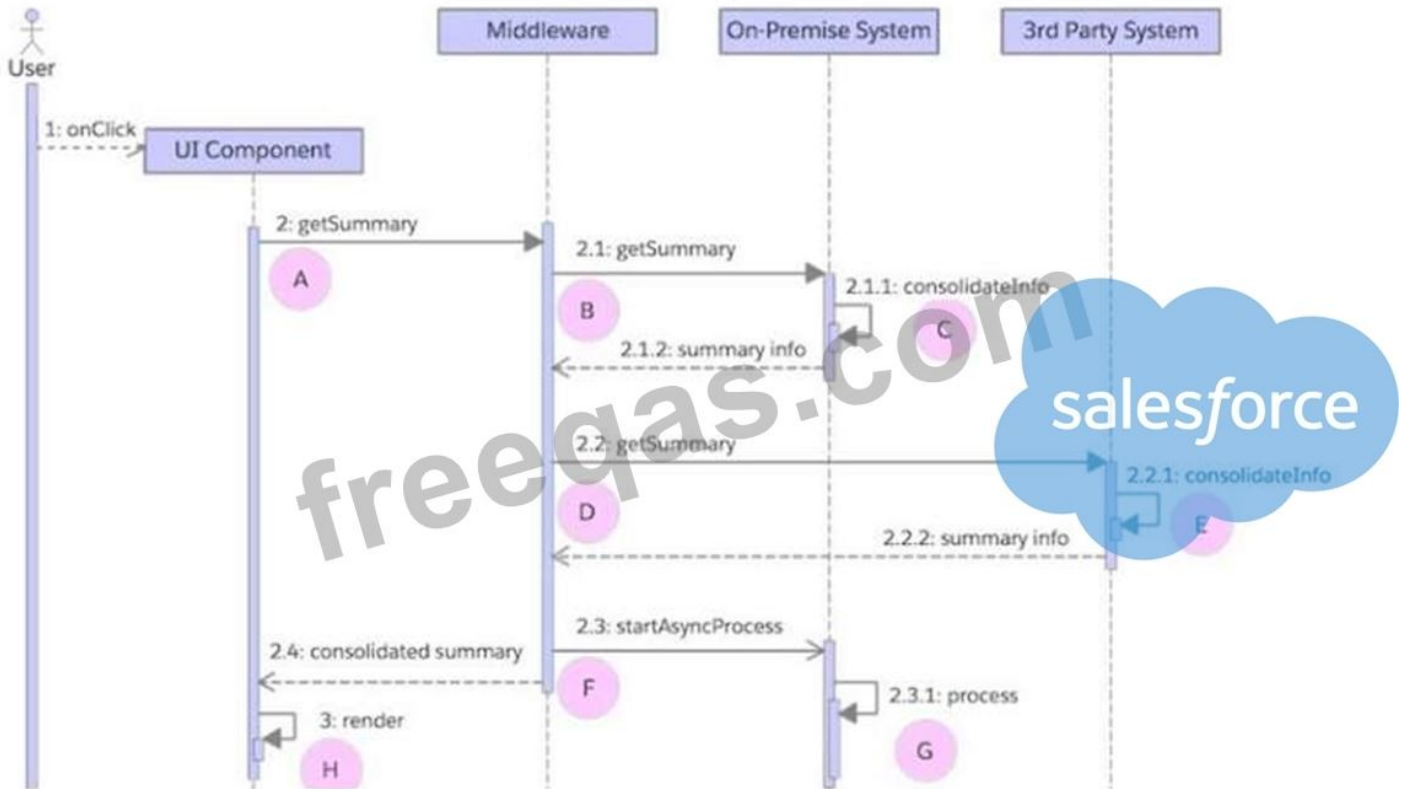
Choose 2 Answers

- A. Canvas can send data to an external system asynchronously.
- B. Canvas endpoint URLs can be dynamically changed via a Lifecycle Handler.
- C. The canvas SDK can be used to make an external systems UI look like Salesforce.
- D. Canvas can provide authorization information via the signed Request.

**Answer: ([SHOW ANSWER](#))**

#### **NEW QUESTION: 76**

A company's cloud-based single page application consolidates data local to the application with data from on premise and 3rd party systems. The diagram below typifies the application's combined use of synchronous and asynchronous calls.



The company wants to use the average response time of its application's user interface as a basis for certain alerts. For this purpose, the following occurs:

1. Log every call's start and finish date and time to a central analytics data store.
2. Compute response time uniformly as the difference between the start and finish date and time - A to H in the diagram.

Which computation represents the end-to-end response time from the user's perspective?

- A. Sum of A, G, and H
- B. Sum of A to F
- C. Sum of A to H
- D. Sum of A and H

**Answer: D (LEAVE A REPLY)**

**Valid Integration-Architecture-Designer Dumps** shared by PrepPdf.com for Helping Passing Integration-Architecture-Designer Exam! PrepPdf.com now offer the **newest Integration-Architecture-Designer exam dumps**, the PrepPdf.com Integration-Architecture-Designer exam **questions have been updated** and **answers have been corrected** get the **newest** PrepPdf.com Integration-Architecture-Designer dumps with Test Engine here:

<https://www.preppdf.com/Salesforce/Integration-Architecture-Designer-prepaway-exam-dumps.html> (108 Q&As Dumps, **40%OFF Special Discount: Exam-Tests**)

**NEW QUESTION: 77**

Universal containers has used Outbound Messaging to integrate with their billing system. Their billing system has frequent outages that don't last more than a couple of hours.

Which two aspects of Outbound Messaging might the customer experience issues with as a result of these outages?

Choose 2 answers

- A. Exceeding Governor Limits.
- B. Out-of-order delivery.
- C. Duplicate messages
- D. Orphaned Requests

**Answer: B,C ([LEAVE A REPLY](#))**

**NEW QUESTION: 78**

Northern Trail Outfitters uses a custom Java application to display code coverage and test results for all of their enterprise applications and is planning to include Salesforce as well.

Which Salesforce API should an Integration Architect use to meet the requirement?

- A. SOAP API
- B. Analytics REST API
- C. Metadata API
- D. Tooling API

**Answer: ([SHOW ANSWER](#))**

Explanation

[https://developer.salesforce.com/docs/atlas.en-us.api\\_tooling.meta/api\\_tooling/tooling\\_api\\_objects\\_apexcodecov](https://developer.salesforce.com/docs/atlas.en-us.api_tooling.meta/api_tooling/tooling_api_objects_apexcodecov)

**NEW QUESTION: 79**

Universal Containers (UC) has Wave Analytics in their Salesforce org. UC has expertise and access to the Dell boomi ETL tool. UC would like to get all leads and opportunities from the org and data from a few other Marketing tools to a Wave instance for enhanced analysis.

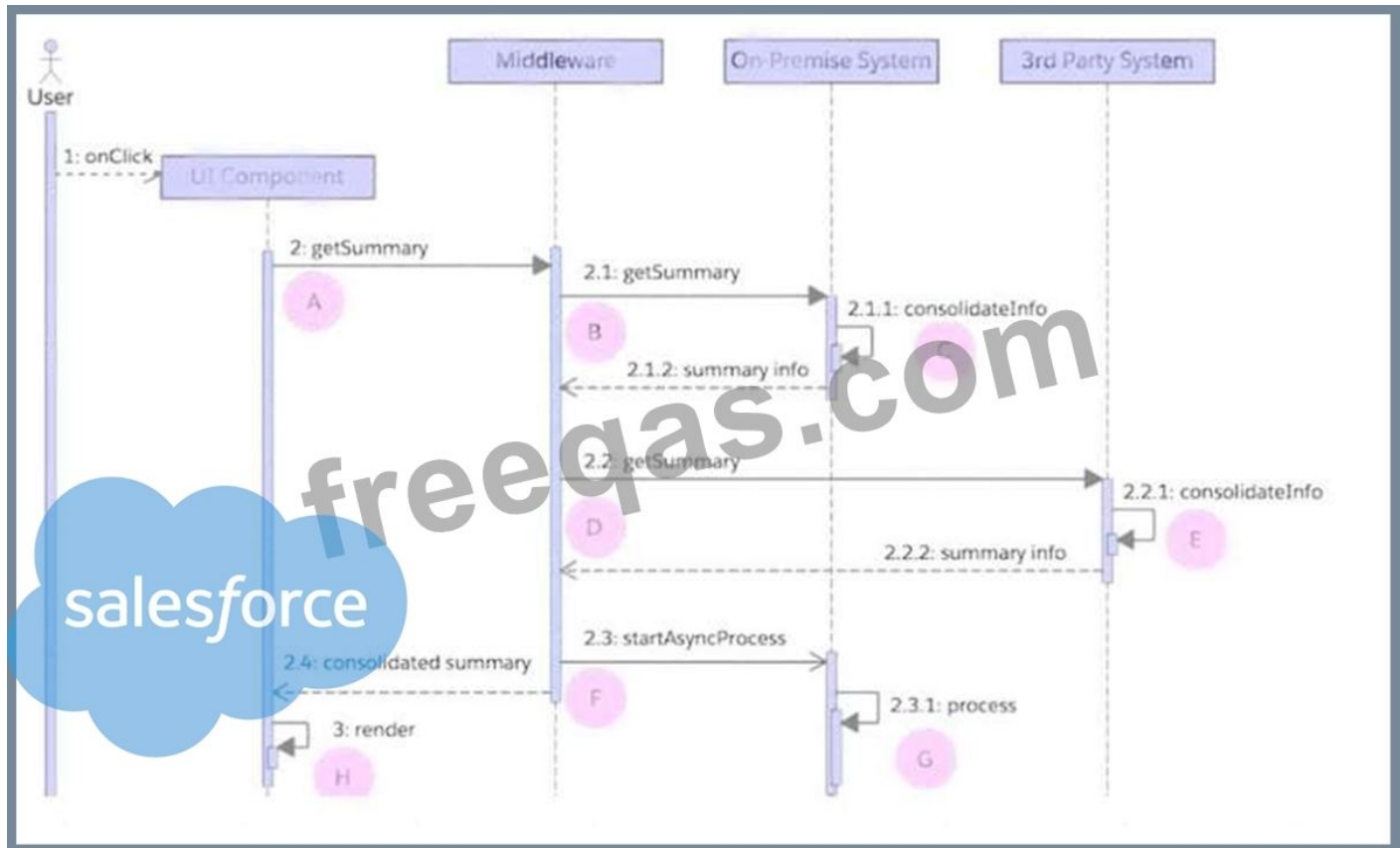
What is the recommended solution to set up the data process?

- A. Export data from all sources into Excel and use Wave connector to import data.
- B. Dell boomi for data from Salesforce and data from other sources.
- C. Use Wave data flow for Salesforce data and data from other sources.
- D. Wave Data flow for Salesforce data and Dell boomi for data from other sources.

**Answer: ([SHOW ANSWER](#))**

**NEW QUESTION: 80**

A company's cloud-based single page application consolidates data local to the application with data from on premise and 3rd party systems. The diagram below typifies the application's combined use of synchronous and asynchronous calls.



The company wants to use the average response time of its application's user interface as a basis for certain alerts. For this purpose, the following occurs:

1. Log every call's start and finish date and time to a central analytics data store.
2. Compute response time uniformly as the difference between the start and finish date and time - A to H in the diagram.

Which computation represents the end-to-end response time from the user's perspective?

- A. Sum of A to F
- B. Sum of A to H
- C. Sum of A and H
- D. Sum of A, G, and H

**Answer: A (LEAVE A REPLY)**

**NEW QUESTION: 81**

Universal Containers merges with Planetary Shipping. They decide to consolidate their systems and migrate all the customer accounts into one Salesforce org. After some data analysis, they find out that their systems have common accounts that they would like to merge and avoid duplicate accounts in Salesforce. They find out that customer email, available in both the systems, can be used to match common accounts. The customer data can be exported as CSV files from their systems. Which two options should be considered to load accounts into Salesforce and eliminate duplicate accounts? Choose 2 answers

- A. ETL tool that is capable of identifying common accounts using email address and performs updates
- B. Dataloader insert operation and Salesforce's native deduplication after the load
- C. ETL tool that is capable of identifying common accounts using a Salesforce ID and performing updates
- D. Dataloader upsert operation with a custom External ID field containing the email address

**Answer: A,D ([LEAVE A REPLY](#))**

### **NEW QUESTION: 82**

Universal Containers has built an integration using the SOAP API to load records from a back-office system into Salesforce. The records created in the back-office system must be loaded into Salesforce in almost real time, so a custom module was written to identify CRUD events in the back-office system and perform sync with Salesforce. UC has several other systems that integrate with Salesforce through the SOAP API using separate integration users.

What is a risk involved with this sort of integration?

- A. Reaching a logins per Day limit.
- B. Too many concurrent sessions
- C. Too many record-lock errors
- D. Reaching an API call limit.

**Answer: D ([LEAVE A REPLY](#))**

### **NEW QUESTION: 83**

Universal containers is hearing complaints from users that recently released changes while they meet the functional requirements are not actually usable and/or do not meet their expectations for user experience for example, a Visualforce page that takes too long to display the first page of data.

Which two types of testing should a technical Architect implement to reduce or eliminate the complaint?

Choose 2 answers

- A. Unit Testing
- B. user Acceptance Testing
- C. Regression Testing
- D. Performance testing

**Answer: B,D ([LEAVE A REPLY](#))**

### **NEW QUESTION: 84**

Universal Containers has a requirement to update the Salesforce Account object any time the corresponding account is updated within their financial system.

Which three Salesforce capabilities should the Architect consider?

- A. Partner WSDL because of a requirement to utilize SOAP-based web services.
- B. Enterprise WSDL because of a requirement to utilize SOAP-based services

- C. Partner WSDL because of a requirement to utilize REST-based web services
- D. Streaming API because of a requirement to dynamically inspect field names during runtime.
- E. Partner WSDL because of a requirement to dynamically inspect field names during runtime.

**Answer: A,B,E ([LEAVE A REPLY](#))**

#### **NEW QUESTION: 85**

Universal Containers has an external ERP that will manage inventory and initiate shipping logistics after an Opportunity is marked "Closed Won" in Salesforce. A "Shipping Number" needs to be written back to the Opportunity to track related records in the ERP. Sales Reps need to move quickly from one Opportunity to the next.

What integration pattern will satisfy the system reqs while maximizing the efficiency of the Sales Reps?

- A. Remote Process Invocation - Request and Reply
- B. Remote Call-In
- C. Remote Process Invocation - Fire and Forget
- D. Batch Data Synchronization

**Answer: C ([LEAVE A REPLY](#))**

#### **NEW QUESTION: 86**

Universal learning (UC) is embarked on Salesforce transformation journey, UC will decommission the legacy CRM system and migrate data to Salesforce. The data migration team asked for a recommendation to optimize the performance of the dataload to Salesforce.

Which approach should be used to meet the requirement?

- A. Contact Salesforce support to schedule performance load.
- B. Use Bulk API to process jobs in high performance mode.
- C. Use Bulk API to process jobs in serial mode.
- D. Use Bulk API to process jobs in parallel mode.

**Answer: D ([LEAVE A REPLY](#))**

#### **NEW QUESTION: 87**

Universal Containers has a call center that would like to have a dashboard that updates in real time and shows information about phone calls that have been completed today (recorded in the Activity object). There are several teams in the call center, and each dashboard should only show calls from that team. An employee can start the board each morning, but after that no further user interaction should be needed.

What is a recommended pattern that would minimize implementation time?

- A. Use Heroku to develop a dashboard page that uses the REST API.
- B. Develop a Visualforce page that uses JavaScript Remoting.
- C. Develop a Visualforce page that uses the Streaming API.
- D. Use native Salesforce dashboard functionality

**Answer: ([SHOW ANSWER](#))**

**NEW QUESTION: 88**

Universal Containers has decided that acquisition of other companies will be a key focus of their growth for the next several years. All acquired customer service agents will use UC's pre-existing customer support process built in Salesforce. The ERP application at any acquired company will not be immediately replaced, and customer service agents must be able to see up-to-date order status from all ERP systems.

What recommendation should a technical Architect make to minimize complexity during new acquisitions?

- A. Use custom Linksto direct users to the appropriate ERP system to view order status.
- B. Leverage Apex callouts to integrate directly with acquired applications.
- C. Use an ESB to abstract the Salesforce integration from other enterprise applications.
- D. Build all Integrations as nightly ETL batches to minimize real-time overhead.

**Answer: C** ([LEAVE A REPLY](#))

**NEW QUESTION: 89**

Universal Containers is replacing a home-grown CRM system. Currently, a .Net application runs a batch process to query the CRM system nightly and create a CSV file that is picked up via SFTP and loaded to a SQL database.

What technology should an architect use to minimize custom development when replacing the CRM system with Salesforce?

- A. APEX Callout
- B. Outbound messaging
- C. APEX Batch
- D. Middleware

**Answer: D** ([LEAVE A REPLY](#))

**NEW QUESTION: 90**

Universal Containers would like to integrate to an external system from Salesforce over a secure channel however the external system does not support HTTP-basic authentication. What approach should an integration Architect recommend that enables the external system to trust the data being received?

- A. Include a secret passphrase in the payload that is validated by the external system.
- B. Base64 encode the data to ensure untrusted 3rd parties don't see it.
- C. Utilize a 3rd-party SSO solution to authenticate the session.
- D. Digitally sign the Payload using a private key trusted by the external system.

**Answer: D** ([LEAVE A REPLY](#))

**NEW QUESTION: 91**

Which three considerations should an Integration Architect consider when recommending Platform Event as an Integration solution?

Choose 3 answers

- A. Inability to create a Lightning record page for platform events.
- B. Inability to query event messages using SOQL
- C. When you delete an event definition, it's permanently removed and can't be restored.
- D. You can use Event Monitoring to track user activity, such as logins and running reports.
- E. Subscribe to an AssetToken Event stream to monitor OAuth 2.0 authentication activity. C

**Answer: A,B,C (LEAVE A REPLY)**

**Valid Integration-Architecture-Designer Dumps** shared by PrepPdf.com for Helping Passing Integration-Architecture-Designer Exam! PrepPdf.com now offer the **newest Integration-Architecture-Designer exam dumps**, the PrepPdf.com Integration-Architecture-Designer exam **questions have been updated** and **answers have been corrected** get the **newest** PrepPdf.com Integration-Architecture-Designer dumps with Test Engine here: <https://www.preppdf.com/Salesforce/Integration-Architecture-Designer-prepaway-exam-dumps.html> (108 Q&As Dumps, **40%OFF Special Discount: Exam-Tests**)

#### **NEW QUESTION: 92**

Sales representatives at Universal Containers (UC) use Salesforce Sales Cloud as their primary CRM. UC owns a legacy homegrown application that stores a copy of customer data as well. Sales representatives may edit or update Contact records in Salesforce if there is a change. Both Salesforce and the homegrown application should be kept synchronized for consistency. UC has these requirements:

1. When a Contact record in Salesforce is updated, the external homegrown application should be
2. The synchronization should be event driven.
3. The integration should be asynchronous.

Which option should an architect recommend to satisfy the requirements?

- A. Leverage Change Data Capture to track changes to the Contact object and write a CometD subscriber on the homegrown application.
- B. Leverage Platform Events to publish a custom event message containing changes to the Contact object.
- C. Write an Apex Trigger with the @future annotation.
- D Use an ETL tool to keep Salesforce and the homegrown application in sync on a regular cadence.

**Answer: (SHOW ANSWER)**

#### **NEW QUESTION: 93**

Which WSDL should an architect consider when creating an integration that might be used for more than one salesforce organization and different met

- A. Enterprise WSDL
- B. Corporate WSDL
- C. SOAP API WSDL
- D. Partner WSDL

**Answer: D (LEAVE A REPLY)**

#### **NEW QUESTION: 94**

A conglomerate is designing a Lightning Web Component (LWC) to display transactions aggregated from different sources. Their current system landscape is as follows:

1. Transactions are created at any time through their various on-premise and cloud-based systems.
2. All necessary transactions are replicated to a custom Transaction object in Salesforce. It is updated periodically so it only has a subset of the necessary transactions between updates.
3. Middleware supports publish-subscribe interactions and provides RESTful Enterprise APIs that can retrieve transactions from on-premise and cloud-based systems.

The company wants to address a usability concern regarding incomplete data displayed on the LWC component. What should the Integration Architect specify so the LWC will be able to display all the required transactions?

- A. Publish a Platform Event, have the middleware subscribe and update the custom object on receipt of Platform Event.
- B. Use the Continuation class to call the Enterprise APIs and then process the response in a callback method.
- C. Let the Lightning Data Service with a wire adapter display new values when the custom object records change.
- D. Call the Enterprise APIs directly from the LWC's JavaScript code and redisplay the LWC on receipt of the API response.

**Answer: D (LEAVE A REPLY)**

#### **NEW QUESTION: 95**

Universal Containers (UC) is planning to roll out a new Force.com app to a regional business unit. UC has partial copy and a full sandbox available for deployment. UC's Architect has been asked to design an environment strategy for integration testing and performance testing, as well as user acceptance testing.

What is the recommended use of available sandbox types that an Architect should consider?

- A. Use the partial copy for performance testing and full sandbox for integration and user acceptance testing.
- B. Use the full sandbox for performance and user acceptance testing and the partial copy for integration testing.
- C. Use the full sandbox for integration testing and the partial copy for user acceptance and performance testing.

**D.** Use the full sandbox for user acceptance testing and use the partial copy for integration and performance testing.

**Answer: B (LEAVE A REPLY)**

#### **NEW QUESTION: 96**

Given the diagram below, a Salesforce org, middleware, and Historical data store (with 20million records and growing) exists with connectivity between them  
Historical records are archived from Salesforce and moved to Historical Data store (which houses 20M records and growing; fine-tuned to be performant with search queries).

Call center agents use Salesforce, when reviewing occasional special cases, have requested access to view the related historical case items that relate to submit cases.

Which mechanism and patterns are recommended to maximize declarative configuration?

**A.** Use an ETL tool with a Batch Data Synchronization pattern to migrate historical data into Salesforce and into a custom object (historical data) related to Case object.

**B. C** Use an ESB tool with a fire and forget pattern and then publish a platform event for the requested historical data.

**C.** Use an ESB tool with Request-Reply pattern and then make a real-time Apex callout to the ESB endpoint to fetch and display component related to Case object

**D.** Use ESB tool with Data Virtualization pattern, expose OData endpoint, and then use Salesforce Connect to consume and display the External Object alongside with the Caseobject.

**Answer: D (LEAVE A REPLY)**

#### **NEW QUESTION: 97**

Universal Containers (UC) manages all of their customer information on the Sales Cloud. UC would like to view real-time order information from their ERP system, and also update the ERP system with service information from Salesforce that relates to the orders. UC's ERP system supports OData 4.0.

Which two options are recommended to achieve the desired functionality?

**A.** Use Salesforce connect for looking up order information from ERP.

**B.** Use Salesforce connect to write service data into UC's ERP system.

**C.** Set up data replication for order and service data syncing.

**D.** Use an Apex callout to look up order information on the ERP system.

**Answer: A,B (LEAVE A REPLY)**

#### **NEW QUESTION: 98**

An Architect is required to integrate with an External Data Source via a Named Credential with an Apex callout due to technical constraints.

How is authentication achieved?

**A.** Handle authentication with login flows.

**B.** Handle authentication in the code.

**C.** Connect via Salesforce Connect.

D. Connect via Communities.

**Answer: A (LEAVE A REPLY)**

Explanation

[https://help.salesforce.com/articleView?id=named\\_credentials\\_define.htm&type=5](https://help.salesforce.com/articleView?id=named_credentials_define.htm&type=5)

**NEW QUESTION: 99**

Developers at Universal Containers have created a custom command-line tool to help with their application lifecycle management by allowing them to deploy metadata changes such as page layouts, custom labels, and list views to their org using the Metadata API.

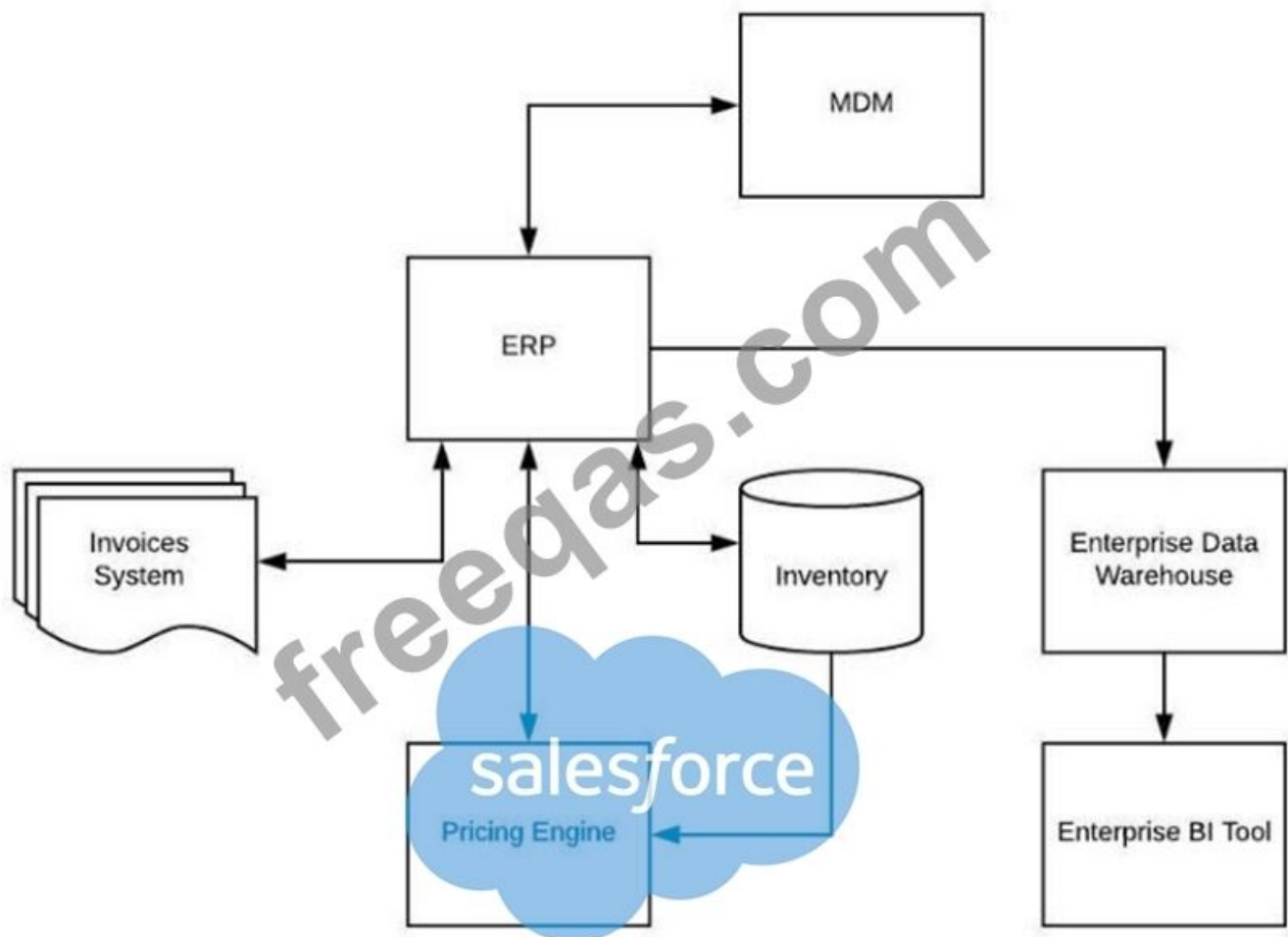
What integration pattern does this tool utilize?

- A. Request and Reply
- B. Fire and Forget
- C. Remote Call-In
- D. UI Update Based on Data Changes

**Answer: A (LEAVE A REPLY)**

**NEW QUESTION: 100**

A large enterprise customer with the following system landscape is planning to implement Salesforce Sales Cloud.



The following business processes need to be supported in Salesforce:

1. Sales Consultants should be able to have access to current inventory.
2. Enterprise Resource Planning System(ERP) is the system of record for pricing information.
3. Quotes should be generated in Salesforce with pricing from ERP.
4. Sales Management uses a Enterprise Business Intelligence (BI) tool to view Sales dashboards.
5. Master Data Management (MDM) is the system of record for customers and prospects.
6. Invoices should be accessible in Salesforce.

Which systems in the landscape should the Integration Consultant consider to be integrated with Salesforce to support the business requirements?

- A. ERP, Inventory, Pricing Engine, Invoices system
- B. ERP, MDM, Data Warehouse, Invoices system
- C. ERP, MDM, BI tool and Data Warehouse
- D. ERP, Invoices system, Data Warehouse and BI Tool

**Answer: A (LEAVE A REPLY)**

### NEW QUESTION: 101

Universal containers is implementing Salesforce for the first time. As part of the implementation, approximately 10 Million contact records need to be migrated into the new environment.

What tool should an architect recommend?

- A. Salesforce Workbench
- B. Salesforce Data Loader
- C. Excel connector
- D. Data Import Wizard

**Answer: B (LEAVE A REPLY)**

### NEW QUESTION: 102

A customer's enterprise architect has identified requirements around caching, queuing, error handling, alerts, retries, event handling, etc. The company has asked the Salesforce integration architect to help fulfill such aspects with their Salesforce program.

Which three recommendations should the Salesforce integration architect make?

Choose 3 answers

- A. Provide true message queueing for integration scenarios (including orchestration, process choreography, quality of service, etc.) given that a middleware solution is required.
- B. Message transformation and protocol translation should be done within Salesforce. Recommend leveraging Salesforce native protocol conversion capabilities as middle watools are NOT suited for such tasks
- C. Transform a fire-and-forget mechanism to request-reply should be handled by middleware tools (like ETL/ESB) to improve performance.
- D. Event handling processes such as writing to a log, sending an error or recovery process, or sending an extra message, can be assumed to be handled by middleware.
- E. Event handling in a publish/subscribe scenario, the middleware can be used to route requests or messages to active data-event subscribers from active data-event publishers.

**Answer:** ([SHOW ANSWER](#))

**NEW QUESTION: 103**

Universal Containers (UC) is planning on a production release with a large data volume to be migrated to Salesforce from a back-office system. The incoming data is constantly being updated in the back-office system. UC would like to keep the data synchronized in near real-time in Salesforce.

What is the recommended approach to achieve this?

- A. Use Bulk API for a one-time migration and a SOAP API call-in for an incremental load.
- B. Use SOAP API for a one-time migration and a REST API call-in for an incremental load.
- C. Use Bulk API for a one-time migration and a Bulk API call-in for an incremental load.
- D. Use Bulk API for a one-time migration and an Apex web service call-in for an incremental load.

**Answer:** D ([LEAVE A REPLY](#))

**NEW QUESTION: 104**

Universal learning (UC) is embarked on Salesforce transformation journey, UC will decommission the legacy CRM system and migrate data to Salesforce. The data migration team asked for a recommendation to optimize the performance of the data load to Salesforce.

Which approach should be used to meet the requirement?

- A. Use Bulk API to process jobs in serial mode.
- B. Use Bulk API to process jobs in high performance mode.
- C. Use Bulk API to process jobs in parallel mode.
- D. Contact Salesforce support to schedule performance load.

**Answer:** C ([LEAVE A REPLY](#))

**Valid Integration-Architecture-Designer Dumps** shared by PrepPdf.com for Helping Passing Integration-Architecture-Designer Exam! PrepPdf.com now offer the **newest Integration-Architecture-Designer exam dumps**, the PrepPdf.com Integration-Architecture-Designer exam **questions have been updated** and **answers have been corrected** get the **newest** PrepPdf.com Integration-Architecture-Designer dumps with Test Engine here: <https://www.preppdf.com/Salesforce/Integration-Architecture-Designer-prepaway-exam-dumps.html> (108 Q&As Dumps, **40%OFF Special Discount: Exam-Tests**)