

## VMware.2V0-21.20PSE.v2023-01-25.q63

<b>Exam Code:</b>	2V0-21.20PSE
<b>Exam Name:</b>	Professional VMware vSphere 7.x
<b>Certification Provider:</b>	VMware
<b>Free Question Number:</b>	63
<b>Version:</b>	v2023-01-25
<b># of views:</b>	1837
<b># of Questions views:</b>	630
<a href="https://www.freeqas.com/qa/VMware/2V0-21.20PSE/VMware.2V0-21.20PSE.v2023-01-25.q63.html">https://www.freeqas.com/qa/VMware/2V0-21.20PSE/VMware.2V0-21.20PSE.v2023-01-25.q63.html</a>	

### NEW QUESTION: 1

An administrator receives an escalation to investigate a low disk space alarm on a datastore. The administrator discovers that a snapshot has been accidentally taken on a production, write-intensive database server. The snapshot has grown to nearly 1 TB in size in less than an hour and continues growing every second.

Which behavior should the administrator expect while deleting the snapshot? (Choose the best answer.)

- A. ESXi will create a virtual RAM disk to cache ongoing database write activity; performance impact will be limited.
- B. ESXi will commit the snapshot delta disk into the base disk; ongoing database write activity could result in long stun times.
- C. ESXi will merge the snapshot delta disk into the base disk; the virtual machine will be briefly stunned.
- D. ESXi will instantly switch from the base disk to the snapshot delta disk with no performance impact.

**Answer: B (LEAVE A REPLY)**

Explanation

<https://kb.vmware.com/s/article/1002836>

### NEW QUESTION: 2

An IT department is experiencing random hardware failures that are costing the company money. The CIO is looking for technical support beyond traditional break/fix with enhanced visibility and proactive insights into the environment at no additional cost.

Which VMware service meets the needs of the CIO? (Choose the best answer.)

- A. VMware Global Support Services
- B. vRealize Operations Manager
- C. VMware Skyline

D. VMware Premier Support

Answer: C ([LEAVE A REPLY](#))

**NEW QUESTION: 3**

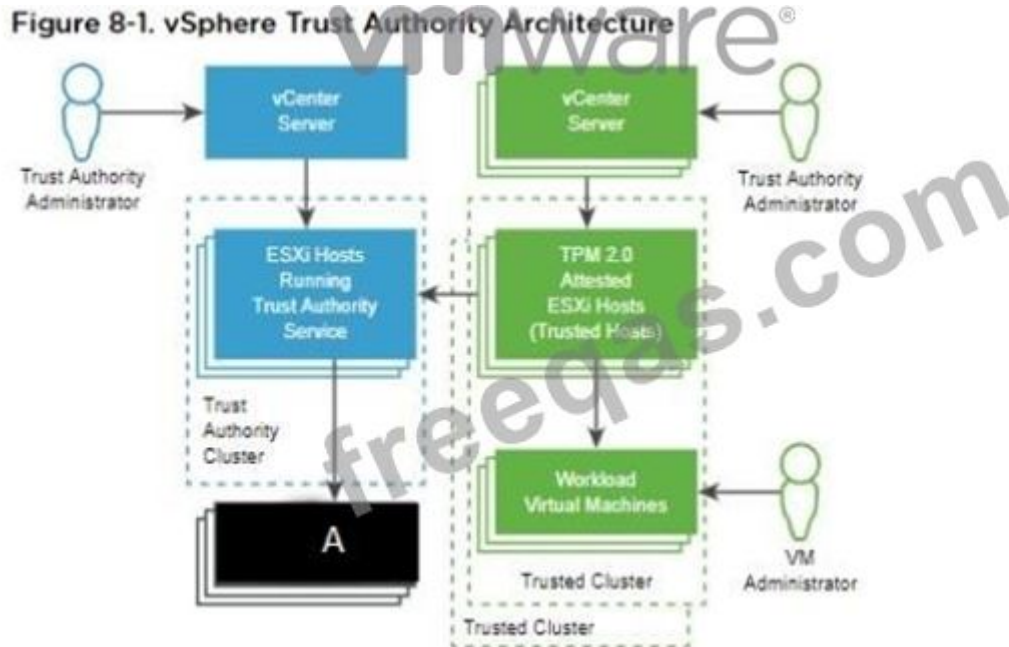
Which action is supported over a VMkernel vMotion TCP/IP stack? (Choose the best answer.)

- A. Fault tolerance protection
- B. Snapshot creation
- C. Virtual machine cloning
- D. Hot migrations

Answer: A ([LEAVE A REPLY](#))

**NEW QUESTION: 4**

Refer to the exhibit.



Which trusted infrastructure component is missing and represented by the area labeled "A?"

- A. Key Provider Service
- B. Attestation Service
- C. Key Management Server
- D. vSphere Virtual Machine Encryption

Answer: B ([LEAVE A REPLY](#))

**NEW QUESTION: 5**

What are two supported ESXi boot options? (Choose two.)

- A. vSAN
- B. iSCSI
- C. NFS
- D. SAN
- E. vSphere Virtual Volumes

**Answer: C,E ([LEAVE A REPLY](#))**

**NEW QUESTION: 6**

Which privilege is required to run the esxtop utility?

- A. Administrator
- B. vStatsAdmin
- C. vStatsUser
- D. Root user

**Answer: D ([LEAVE A REPLY](#))**

**NEW QUESTION: 7**

Which feature is a pre-requisite for configuring admission control on a cluster?

- A. vSphere Fault Tolerance
- B. vSphere Enhanced vMotion Compatibility (EVC)
- C. vSphere Distributed Resource Scheduler (DRS)
- D. vSphere High Availability (HA)

**Answer: ([SHOW ANSWER](#))**

**NEW QUESTION: 8**

A recently deployed set of test virtual machines are impacting the performance of a company development team project datastore. The shared cache server appears to be suffering from storage congestion.

Storage I/O Control is already enabled on all company datastores.

Which two steps should the administrator take to improve the performance of the cache server?

(Choose two.)

- A. Update the storage provider for the existing array.
- B. Create a claim rule to control the storage path.
- C. Configure the path selection policy.
- D. Configure storage shares per virtual machine.
- E. Configure storage limits per virtual machine.

**Answer: D,E ([LEAVE A REPLY](#))**

Explanation

<https://docs.vmware.com/en/VMware-vSphere/7.0/com.vmware.vsphere.resmgmt.doc/GUID-25C3D9FE-3A9D->

**NEW QUESTION: 9**

What are two pre-requisites for enabling ESXi secure boot? (Choose two.)

- A. External Key Management Service
- B. vCenter Server 7.0 or greater
- C. Trusted Platform Module version 2.0
- D. ESXi 7.0 or greater

E. Unified Extensible Firmware Interface (UEFI)

**Answer: A,E ([LEAVE A REPLY](#))**

Explanation

<https://blogs.vmware.com/vsphere/2017/05/secure-boot-esxi-6-5-hypervisor-assurance.html>

### **NEW QUESTION: 10**

An administrator is asked to take a snapshot of a virtual machine prior to an application upgrade. The virtual machine has one standard virtual machine disk (VMDK) and one physical mode raw device mapping (RDM) attached.

Which statement is true with regard to taking this snapshot?

- A. The administrator will be unable to snapshot the RDM.
- B. The administrator will be able to snapshot both disks.
- C. The administrator will be able to snapshot the standard VMDK in independent persistent mode.
- D. The administrator will be able to snapshot the RDM in independent persistent mode.

**Answer: ([SHOW ANSWER](#))**

### **NEW QUESTION: 11**

Which virtual disk option allows a virtual machine to consume the minimum storage capacity?

(Choose the best answer.)

- A. Independent persistent
- B. Lazy-zeroed thick-provisioned
- C. Eager-zeroed thick-provisioned
- D. Thin-provisioned

**Answer: ([SHOW ANSWER](#))**

Explanation

<https://docs.vmware.com/en/VMware-vSphere/7.0/com.vmware.vsphere.storage.doc/GUID-8204A8D7-25B6-4D>

### **NEW QUESTION: 12**

A new vSphere 7.0 environment is deployed with the following:

- \* A single vCenter Server
- \* Two vSAN clusters
- \* A vSAN default storage policy

Which statement is true regarding virtual disk availability in this environment? (Choose the best answer.)

- A. Each virtual disk will have two replicas of data.
- B. All stripes will be placed on different disk groups and cannot be placed on the same host.
- C. Each virtual disk will have four replicas of data.
- D. Replicas will be placed on different disk groups but can be placed on the same host.

**Answer: A ([LEAVE A REPLY](#))**

### NEW QUESTION: 13

An administrator identifies a snapshot file named "Win10-000001-sesparse.vmdk" on a datastore. Which type of information can be determined about this datastore? (Choose the best answer.)

- A. The datastore is a vSAN datastore.
- B. The datastore is formatted as VMFS3.
- C. The datastore is a raw device mapping.
- D. The datastore is formatted as VMFS6.

Answer: ([SHOW ANSWER](#))

### NEW QUESTION: 14

An administrator runs a two-node vSphere cluster, which contains two domain controller virtual machines (VMs). The administrator wants to ensure that VMs run on separate hosts without interfering with normal maintenance operations.

How should the administrator configure Distributed Resource Scheduler (DRS)? (Choose the best answer.)

- A. Create a 'Must run Virtual Machines to Hosts' anti-affinity rule.
- B. Create a 'Virtual Machines to Virtual Machines' dependency rule.
- C. Create a 'Virtual Machines to Virtual Machines' anti-affinity rule.
- D. Create a 'Should run Virtual Machines to Hosts' anti-affinity rule.

Answer: ([SHOW ANSWER](#))

### NEW QUESTION: 15

Each logical port on a vSphere standard switch can be a member of how many port groups? (Choose the best answer.)

- A. 1
- B. 3
- C. 4
- D. 2

Answer: A ([LEAVE A REPLY](#))

### NEW QUESTION: 16

An administrator is troubleshooting a recent failure and finds the following error messages:

```
The guest OS has reported an error during quiescing. The error code was: 5 The error message was:  
Asynchronous operation failed: >VssSyncStart  
The guest OS has reported an error during quiescing. The error code was: 5 The error message was:  
'VssSyncStart' operation failed: The >system cannot find the file specified. (0x80070002)
```

Which action has failed, thus resulting in these errors? (Choose the best answer.)

- A. Virtual machine migration
- B. Virtual machine reconfiguration
- C. Virtual machine power off
- D. Virtual machine snapshot

Answer: ([SHOW ANSWER](#))

**Valid 2V0-21.20PSE Dumps** shared by PrepPdf.com for Helping Passing 2V0-21.20PSE Exam! PrepPdf.com now offer the **newest 2V0-21.20PSE exam dumps**, the PrepPdf.com 2V0-21.20PSE exam **questions have been updated** and **answers have been corrected** get the **newest** PrepPdf.com 2V0-21.20PSE dumps with Test Engine here:  
<https://www.preppdf.com/VMware/2V0-21.20PSE-prepaway-exam-dumps.html> (110 Q&As Dumps, **40%OFF Special Discount: Exam-Tests**)

#### NEW QUESTION: 17

vCenter High Availability (HA) protects vCenter Server against host and hardware failures. What is the minimum number of ESXi hosts required to enable this capability? (Choose the best answer.)

- A. 1
- B. 5
- C. 7
- D. 3

Answer: D ([LEAVE A REPLY](#))

#### NEW QUESTION: 18

Refer to the exhibit.



An administrator is consistently receiving an alarm regarding a CPU performance issue; however, there is NO CPU issue identified. What can the administrator do to make sure the alarm is triggered when there is an actual CPU performance issue?

- A. Show as Critical' to 'Show as Warning.'
- B. Change 'is below' to 'is above.' Change.'
- C. Change 'VM CPU Ready Time' to 'VM Memory Usage.'

D. Change 'VM CPU Ready Time' to VM CPU Usage.'

**Answer: A ([LEAVE A REPLY](#))**

#### **NEW QUESTION: 19**

A vSphere environment is configured with 1 Gigabit Ethernet for vSphere vMotion. The application team is complaining that when they try to migrate a powered-on virtual machine, the progress is slow and unsuccessful the majority of the time.

Which two recommendations should the administrator make to improve vSphere vMotion performance?

(Choose two.)

- A. Use vSphere Storage I/O Control (SIOC).
- B. Use at least two port groups.
- C. Use Link Aggregation Control Protocol (LACP) on the port group.
- D. Use 10 Gigabit Ethernet or above.
- E. Disable vSphere Fault Tolerance.

**Answer: B,C ([LEAVE A REPLY](#))**

#### **NEW QUESTION: 20**

When deploying a vCenter Server Appliance, which two single sign-on (SSO)-related options are presented to an administrator? (Choose two.)

- A. Create a vCenter Enhanced Linked Mode group
- B. Reset Single Sign-On password
- C. Repoint to another domain
- D. Create a vCenter Single Sign-On domain
- E. Join an existing vCenter Single Sign-On domain

**Answer: D,E ([LEAVE A REPLY](#))**

#### **NEW QUESTION: 21**

A virtual machine with a single 100 GB virtual machine disk file has a single 20 GB snapshot. The virtual machine is powered off.

How much additional free space on the datastore is required to delete the snapshot, committing the snapshot delta disk to the base disk? (Choose the best answer.)

- A. 0 GB
- B. 20 GB
- C. 100 GB
- D. 120 GB

**Answer: A ([LEAVE A REPLY](#))**

#### **NEW QUESTION: 22**

An administrator is asked to take a snapshot of a virtual machine prior to an application upgrade. The virtual machine has one standard virtual machine disk (VMDK) and one physical mode raw device mapping (RDM) attached.

Which statement is true with regard to taking this snapshot? (Choose the best answer.)

- A. The administrator will be unable to snapshot the RDM.
- B. The administrator will be able to snapshot the standard VMDK in independent persistent mode.
- C. The administrator will be able to snapshot the RDM in independent persistent mode.
- D. The administrator will be able to snapshot both disks.

**Answer: A (LEAVE A REPLY)**

Explanation

[https://docs.vmware.com/en/VMware-vSphere/6.7/com.vmware.vsphere.vm\\_admin.doc/GUID-53F65726-A23B](https://docs.vmware.com/en/VMware-vSphere/6.7/com.vmware.vsphere.vm_admin.doc/GUID-53F65726-A23B)

#### **NEW QUESTION: 23**

An administrator wants to be able to send vCenter Server log files to a remote syslog server and analyze logs using vRealize Log Insight. Which step must the administrator take to meet this requirement?

- A. Specify the remote syslog server name at deployment using the vCenter Server GUI Installer.
- B. Specify the vRealize Log Insight system name using the vSphere Client.
- C. Configure log file forwarding using the vCenter Server Management Interface.
- D. Configure the vCenter Server logging options using the vSphere Client.

**Answer: C (LEAVE A REPLY)**

#### **NEW QUESTION: 24**

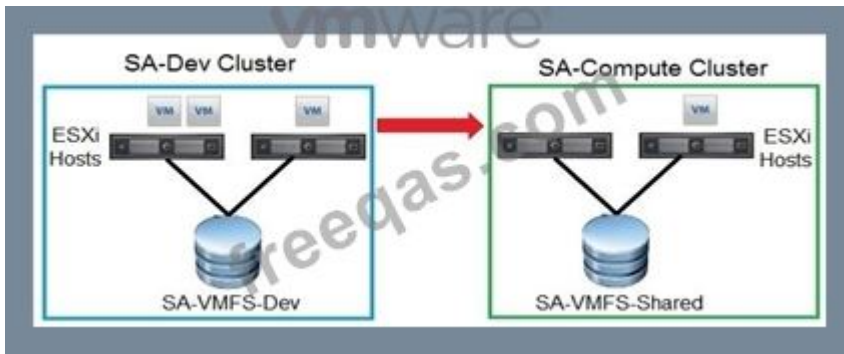
An administrator is trying to configure vCenter Single Sign-On from the vSphere Client but does NOT have permission. Which role is required in order to configure vCenter Single Sign-On?

- A. vCenter Power User
- B. vCenter Administrator
- C. vCenter Server Appliance Root
- D. vCenter Single Sign-On Administrator

**Answer: B (LEAVE A REPLY)**

#### **NEW QUESTION: 25**

Refer to the exhibit.



Which two migration methods can an administrator use to move virtual machines from the SA-Dev cluster to the SA-Compute cluster? (Choose two.)

- A. Hot migration of compute resource and storage resource
- B. Cold migration of storage only
- C. Cold migration of compute resource and storage resource
- D. Cold migration of compute resource only
- E. Hot migration of compute resource only

**Answer: A,C (LEAVE A REPLY)**

#### NEW QUESTION: 26

What is a requirement of Storage I/O Control?

- A. Automated storage tiering capabilities
- B. Storage connected through Fibre Channel
- C. Datastores with multiple extents
- D. Management by a single vCenter Server

**Answer: (SHOW ANSWER)**

#### NEW QUESTION: 27

A recently deployed set of test virtual machines are impacting the performance of a company development team project datastore. The shared cache server appears to be suffering from storage congestion.

Storage I/O Control is already enabled on all company datastores.

Which two steps should the administrator take to improve the performance of the cache server? (Choose two.)

- A. Create a claim rule to control the storage path.
- B. Configure storage shares per virtual machine.
- C. Configure the path selection policy.
- D. Update the storage provider for the existing array.
- E. Configure storage limits per virtual machine.

**Answer: A,B (LEAVE A REPLY)**

#### NEW QUESTION: 28

Which TCP/IP stack can support management traffic, vSphere vMotion, IP storage and vSphere Fault Tolerance? (Choose the best answer.)

- A. VXLAN TCP/IP stack
- B. vSphere vMotion TCP/IP stack
- C. Provisioning TCP/IP stack
- D. Default TCP/IP stack

**Answer: D (LEAVE A REPLY)**

#### **NEW QUESTION: 29**

Which resource pool setting is used to specify the relative priority or importance as high, normal or low?

(Choose the best answer.)

- A. Shares
- B. Limits
- C. Reservation type
- D. Reservations

**Answer: A (LEAVE A REPLY)**

#### **NEW QUESTION: 30**

Which feature can an administrator use for site availability with minimal effort and a low recovery point objective (RPO)? (Choose the best answer.)

- A. vSphere vMotion
- B. vSphere Fault Tolerance
- C. vSphere High Availability
- D. vSphere Replication

**Answer: D (LEAVE A REPLY)**

#### **NEW QUESTION: 31**

An administrator is tasked with upgrading an existing vSphere environment to version 7.0. There are existing VMFS3 and VMFS5 datastores in the environment.

Which statement is true regarding this upgrade?

- A. VMFS3 is supported with ESXi 7.0 to store boot configurations only.
- B. An ESXi 7.0 host can automatically upgrade a VMFS5 datastore.
- C. A VMFS5 datastore CANNOT be upgraded; a new VMFS6 datastore is required.
- D. An ESXi 7.0 host will NOT recognize a VMFS3 datastore.

**Answer: C (LEAVE A REPLY)**

2V0-21.20PSE exam **questions have been updated** and **answers have been corrected** get the **newest** PrepPdf.com 2V0-21.20PSE dumps with Test Engine here:

<https://www.preppdf.com/VMware/2V0-21.20PSE-prepaway-exam-dumps.html> (110 Q&As Dumps, **40%OFF Special Discount: Exam-Tests**)

### NEW QUESTION: 32

An administrator wants to configure vCenter Server High Availability so that each node is located in a different data center. Which requirement must be met?

- A. Network latency between the nodes must be less than 10 milliseconds.
- B. A vCenter Server license must be assigned to each node.
- C. Each node must be configured with at least three network adapters.
- D. All nodes must be located on a vSAN datastore in each data center.

Answer: ([SHOW ANSWER](#))

### NEW QUESTION: 33

Refer to the exhibit.



Which two statements are true regarding the state of the virtual machine (VM) if an administrator clicks the

"Delete All" option? (Choose two.)

- A. The VM state will match Snap-C.
- B. No snapshots will remain on the VM.
- C. Snap-A will be intact on the VM.
- D. The VM state will match Snap-B
- E. The VM state will match Snap-A.

Answer: **B,D** ([LEAVE A REPLY](#))

Explanation

[https://docs.vmware.com/en/VMware-vSphere/7.0/com.vmware.vsphere.vm\\_admin.doc/GUID-542CF191-B8DE](https://docs.vmware.com/en/VMware-vSphere/7.0/com.vmware.vsphere.vm_admin.doc/GUID-542CF191-B8DE)

**NEW QUESTION: 34**

In a vSphere High Availability (vSphere HA) cluster, which condition can be detected by datastore heartbeating? (Choose the best answer.)

- A. Virtual machine (VM) disk failure
- B. Datastore All Paths Down (APD) event
- C. Fault tolerance virtual machine (VM) failover
- D. Network isolation

**Answer:** ([SHOW ANSWER](#))

**NEW QUESTION: 35**

An administrator is running a variety of vSphere 6.5 cluster configurations and is tasked with upgrading to vSphere 7.0. Which two conditions could cause potential conflicts or outages to the virtual machines (VMs)?

(Choose two.)

- A. The upgrade of an external platform services controller
- B. The use of third-party custom vSphere Installation Bundles (VIBs) installed on the ESXi hosts
- C. The use of a Windows vCenter Server system
- D. The upgrade of a vSphere Distributed Switch with VMs attached
- E. Datastores attached to the hosts based on VMFS3

**Answer:** ([SHOW ANSWER](#))

**NEW QUESTION: 36**

An administrator is tasked with upgrading an existing vSphere environment to version 7.0. The current configuration is using an external Platform Services Controller.

Which two statements are true regarding this upgrade? (Choose two.)

- A. The external Platform Services Controller needs to be converged into an embedded vCenter Server Appliance.
- B. The external Platform Services Controller needs to be decommissioned following the deployment of the new vCenter Server Appliance.
- C. The external Platform Services Controller backup can be restored to a new embedded vCenter Server Appliance.
- D. The external Platform Services Controller needs to be upgraded after the vCenter Server Appliance.
- E. The external Platform Services Controller needs to be powered down while a new vCenter Server Appliance is deployed.

**Answer:** A,B ([LEAVE A REPLY](#))

Explanation

<https://docs.vmware.com/en/VMware-vSphere/7.0/com.vmware.vcenter.upgrade.doc/GUID-30485437-B107-42>

**NEW QUESTION: 37**

What is a minimum disk controller requirement for VMware vSAN?

- A. A disk controller in pass-through or RAID 1 mode
- B. A disk controller in pass-through or RAID 5 mode
- C. A disk controller in pass-through or RAID 0 mode
- D. A disk controller in JBOD mode

**Answer: C ([LEAVE A REPLY](#))**

#### **NEW QUESTION: 38**

An administrator runs third-party software in a virtual machine (VM). The third-party licensing agreement requires payment of a license fee for each host to which the VM migrates. How can the administrator configure Distributed Resource Scheduler (DRS) to minimize licensing costs?

(Choose the best answer.)

- A. Create a 'Must run Virtual Machines to Hosts' affinity rule.
- B. Create a 'Should run Virtual Machines to Hosts' anti-affinity rule.
- C. Create a 'Virtual Machines to Virtual Machines' dependency rule.
- D. Create a 'Virtual Machines to Virtual Machines' affinity rule.

**Answer: ([SHOW ANSWER](#))**

#### **NEW QUESTION: 39**

What are two supported ESXi boot options? (Choose two.)

- A. NFS
- B. iSCSI
- C. vSAN
- D. SAN
- E. vSphere Virtual Volumes

**Answer: ([SHOW ANSWER](#))**

Explanation

<https://docs.vmware.com/en/VMware-vSphere/7.0/com.vmware.vsphere.storage.doc/GUID-2A66A330-A9E5-46>

#### **NEW QUESTION: 40**

Refer to the exhibit.

```

9:04:41am up 5 min 4.0.0-rc16 #1 SMP Tue Aug 14 22:03:11 PDT 2012; root@vmx: ~ # top
PCPU USED(%): 89 8 95 97 AVG: 89 8 95 97
PCPU UTIL(%): 88 8 94 96 AVG: 88 8 94 96

```

ID	GID NAME	NWLD	%USED	%RUN	%SYS	%WAIT	%VSWAIT	%RDY	%IDLE	%OVRLP	%CSTP	%MLMTD	%SWPWT
8	8 helper	294	0.00	400.00	0.00	28784.56	-	400.00	0.00	400.00	0.00	0.00	0.00
1	1 system	152	1.35	31.90	0.15	14796.04	-	373.34	0.00	0.29	0.00	0.00	41.54
14865	14865 Linux2	7	73.32	74.45	0.07	59.00	0.32	50.48	0.11	0.20	0.00	0.00	0.00
14873	14873 Win1	9	115.74	116.08	0.00	43.00	16.52	45.26	23.51	0.36	5.66	0.00	0.00
14881	14881 Win2	9	104.23	104.40	0.00	43.00	16.44	43.60	41.62	0.35	2.63	0.00	0.00
14895	14895 Linux1	7	67.84	69.86	0.00	63.51	0.00	32.46	0.00	0.08	0.00	0.00	0.00
5485	5485 hostd.66720	21	2.30	2.30	0.00	2100.00	-	2.16	0.00	0.00	0.00	0.00	0.00
5233	5233 rhttpproxy.6668	14	0.29	0.30	0.00	400.00	-	0.93	0.00	0.00	0.00	0.00	0.00
9	9 drivers	12	0.00	0.00	0.00	1200.00	-	0.21	0.00	0.00	0.00	0.00	0.00
10	10 ft	4	0.00	0.00	0.00	399.89	-	0.20	0.00	0.00	0.00	0.00	0.00
1012	1012 vmtoolsd.65922	3	0.13	0.13	0.00	300.00	-	0.16	0.00	0.00	0.00	0.00	0.00
14857	14857 esxtop.68027	1	0.20	0.20	0.00	97.10	-	0.13	0.00	0.00	0.00	0.00	0.00
14777	14777 sshd.68017	1	0.20	0.07	0.00	100.00	-	0.07	0.00	0.00	0.00	0.00	0.00

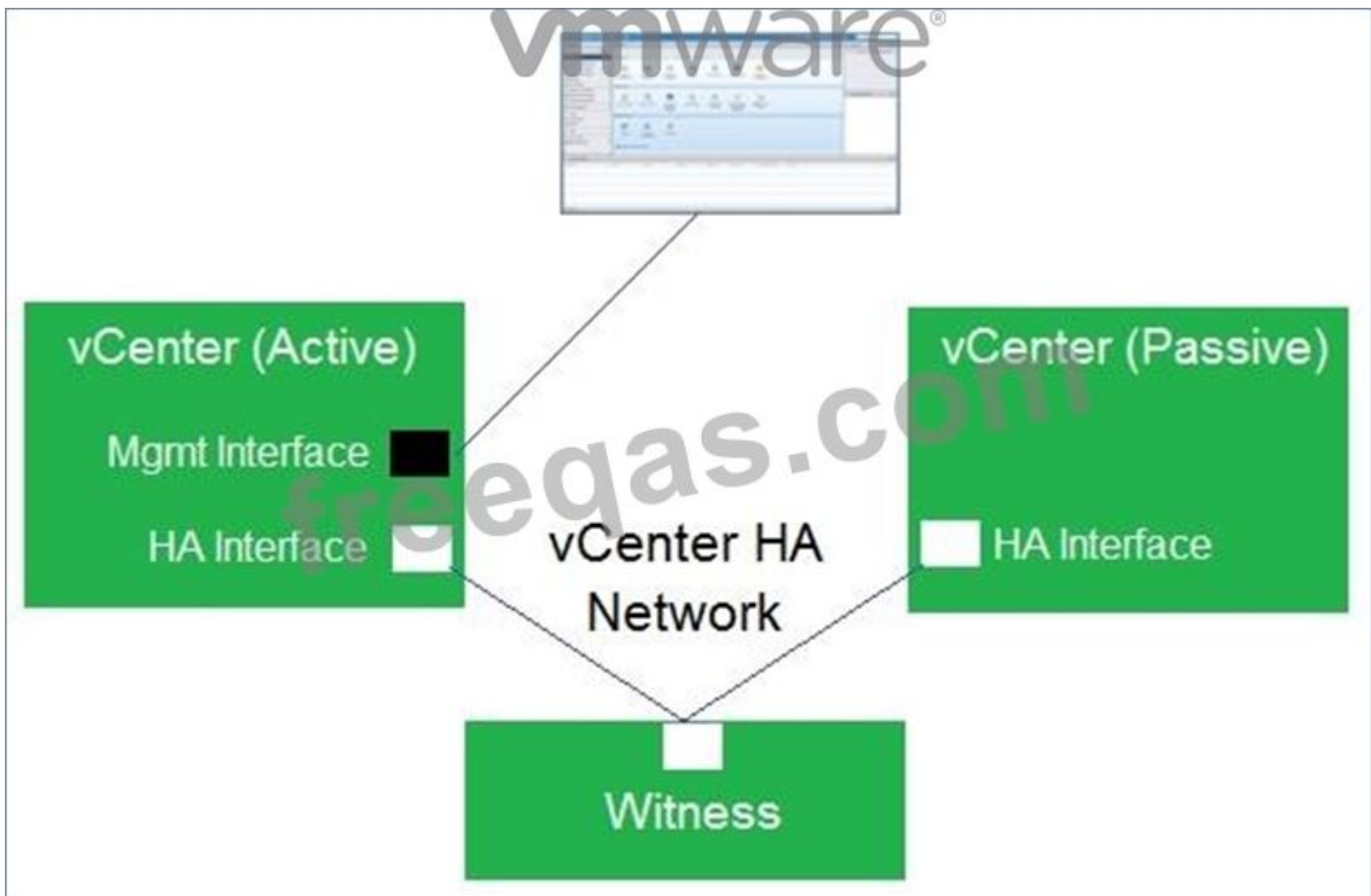
What does the %RDY for the Win1 virtual machine indicate?

- A. Low CPU contention
- B. High CPU contention
- C. High CPU wait time
- D. Low CPU usage

Answer: ([SHOW ANSWER](#))

**NEW QUESTION: 41**

Refer to the exhibit.



Which element is missing from this vCenter High Availability (HA) cluster? (Choose the best answer.)

- A. A secondary witness node
- B. The management interface and connection on the witness node
- C. The management interface on the passive node

D. The connection between the active and passive nodes

**Answer: D** ([LEAVE A REPLY](#))

**NEW QUESTION: 42**

Which two performance tools can be used to monitor virtual machines outside the guest operating system?

(Choose two.)

A. Task Manager

B. esxtop

C. Perfmon

D. top

E. vCenter Server performance charts

**Answer:** ([SHOW ANSWER](#))

**NEW QUESTION: 43**

Which privilege is required to run the esxtop utility? (Choose the best answer.)

A. vStatsAdmin

B. Root user

C. vStatsUser

D. Administrator

**Answer: B** ([LEAVE A REPLY](#))

**NEW QUESTION: 44**

Which local only host utility is used for primary, real-time performance monitoring in vSphere?

(Choose the best answer.)

A. esxtop

B. vSphere Command-Line Interface (CLI)

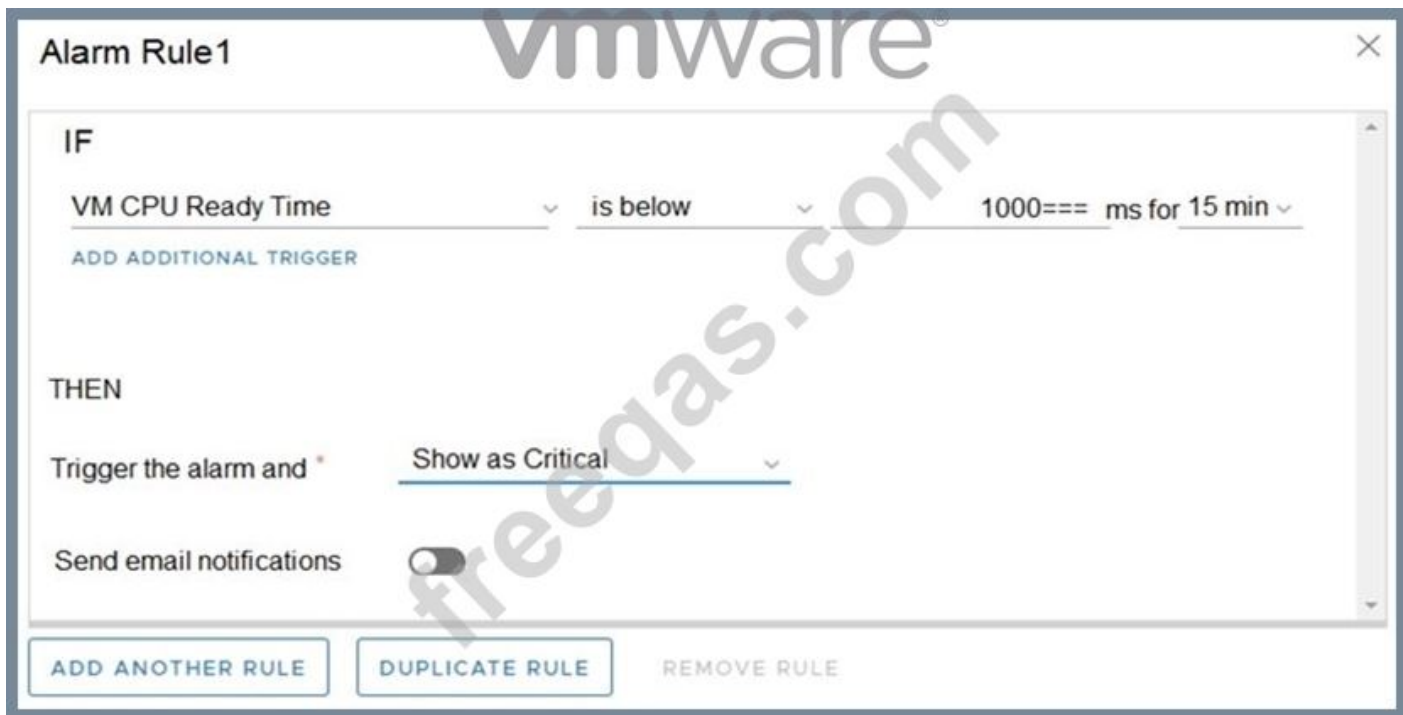
C. resxtop

D. top

**Answer:** ([SHOW ANSWER](#))

**NEW QUESTION: 45**

Refer to the exhibit.



An administrator is consistently receiving an alarm regarding a CPU performance issue; however, there is NO CPU issue identified.

What can the administrator do to make sure the alarm is triggered when there is an actual CPU performance issue? (Choose the best answer.)

- A. Change 'VM CPU Ready Time' to 'VM Memory Usage.'
- B. Change 'Show as Critical' to 'Show as Warning.'
- C. Change 'VM CPU Ready Time' to 'VM CPU Usage.'
- D. Change 'is below' to 'is above.'

**Answer: D (LEAVE A REPLY)**

Explanation

<https://www.actualtechmedia.com/wp-content/uploads/2013/11/demystifying-cpu-ready.pdf>

#### NEW QUESTION: 46

An administrator is deploying a vCenter Server Appliance and wants to join an existing vCenter Single Sign-On domain.

The administrator gathers the following information:

- \* FQDN of the vCenter Single Sign-On server to join
- \* Domain name of the vCenter Single Sign-On server being joined
- \* Password of the vCenter Single Sign-On server administrator account.

What other information is needed to join the existing vCenter Single Sign-On domain? (Choose the best answer.)

- A. Lightweight Directory Access Protocol (LDAP) port
- B. Single Sign-On (SSO) port
- C. vSphere Client port
- D. HTTPS port

**Answer: (SHOW ANSWER)**

**Valid 2V0-21.20PSE Dumps** shared by PrepPdf.com for Helping Passing 2V0-21.20PSE Exam! PrepPdf.com now offer the **newest 2V0-21.20PSE exam dumps**, the PrepPdf.com 2V0-21.20PSE exam **questions have been updated** and **answers have been corrected** get the **newest** PrepPdf.com 2V0-21.20PSE dumps with Test Engine here:  
<https://www.preppdf.com/VMware/2V0-21.20PSE-prepaway-exam-dumps.html> (110 Q&As Dumps, **40%OFF Special Discount: Exam-Tests**)

#### **NEW QUESTION: 47**

Which two statements are true regarding the use of firmware update packages in vSphere Lifecycle Manager?

(Choose two.)

- A. A hardware support manager must be registered as a vCenter Server extension.
- B. The firmware and drivers add-on can be used on clusters that are managed with baselines.
- C. The firmware and drivers add-on is provided by a third-party vendor.
- D. The firmware and drivers add-on can add or remove components from the ESXi base image.
- E. The firmware and drivers add-on are distributed through the official VMware online depot.

**Answer: B,D (LEAVE A REPLY)**

#### **NEW QUESTION: 48**

A company has a vSphere environment consisting of the following characteristics:

- \* A content library named 'CORP' is published at corporate headquarters on a vCenter Server named 'vcenterCorp'.
- \* A regional data center contains a set of hosts managed by a vCenter Server named vcenterR1.
- \* vcenterR1 subscribes to the CORP content library.

The administrator wants to create a new virtual machine image to use on vcenterR1. What are two possible ways the administrator can accomplish this task? (Choose two.)

- A. Configure vcenterR1 to download all library content immediately.
- B. Upload the new image to the CORP library on vcenterR1.
- C. Publish the CORP content library on vcenterR1.
- D. Upload the new image to the CORP library on vcenterCorp.
- E. Upload the new image to a local content library on vcenterR1.

**Answer: A,D (LEAVE A REPLY)**

Explanation

[https://docs.vmware.com/en/VMware-vSphere/6.5/com.vmware.vsphere.vm\\_admin.doc/GUID-254B2CE8-20A8](https://docs.vmware.com/en/VMware-vSphere/6.5/com.vmware.vsphere.vm_admin.doc/GUID-254B2CE8-20A8)

#### **NEW QUESTION: 49**

What is the server virtualization product that combines the ESXi hypervisor and the vCenter Server?

- A. NSX
- B. vSAN
- C. vSphere
- D. vRealize Operations Manager

**Answer:** ([SHOW ANSWER](#))

**NEW QUESTION: 50**

Which two features are only supported by VMFS6 datastores? (Choose two.)

- A. Automatic space reclamation
- B. Dynamic expansion
- C. Concurrent access to shared storage
- D. On-disk locking
- E. 4K native storage devices

**Answer:** ([SHOW ANSWER](#))

**NEW QUESTION: 51**

What is a pre-requisite for configuring virtualization-based security (VBS)? (Choose the best answer.)

- A. Use Windows Server 2012
- B. Change the firmware type from UEFI to Legacy BIOS
- C. Change the firmware type from Legacy BIOS to UEFI
- D. Use Windows Server 2008 R2

**Answer: C** ([LEAVE A REPLY](#))

**NEW QUESTION: 52**

A vSphere environment is configured with 1 Gigabit Ethernet for vSphere vMotion. The application team is complaining that when they try to migrate a powered-on virtual machine, the progress is slow and unsuccessful the majority of the time.

Which two recommendations should the administrator make to improve vSphere vMotion performance?

(Choose two.)

- A. Use at least two port groups.
- B. Use vSphere Storage I/O Control (SIOC).
- C. Use 10 Gigabit Ethernet or above.
- D. Use Link Aggregation Control Protocol (LACP) on the port group.
- E. Disable vSphere Fault Tolerance.

**Answer:** ([SHOW ANSWER](#))

Explanation

[https://docs.vmware.com/en/VMware-vSphere/6.5/com.vmware.vsphere.vm\\_admin.doc/GUID-254B2CE8-20A8](https://docs.vmware.com/en/VMware-vSphere/6.5/com.vmware.vsphere.vm_admin.doc/GUID-254B2CE8-20A8)

**NEW QUESTION: 53**

A new vSphere 7.0 environment is deployed with the following:

- \* A single vCenter Server
- \* Two vSAN clusters
- \* A vSAN default storage policy

Which statement is true regarding virtual disk availability in this environment?

- A. All stripes will be placed on different disk groups and cannot be placed on the same host.
- B. Each virtual disk will have four replicas of data.
- C. Each virtual disk will have two replicas of data.
- D. Replicas will be placed on different disk groups but can be placed on the same host.

**Answer: B (LEAVE A REPLY)**

**NEW QUESTION: 54**

An administrator wants to implement virtual machine encryption. Which component encrypts the virtual machine files?

- A. Key management server (KMS)
- B. Key encryption key (KEK)
- C. Certificate
- D. Data encryption key (DEK)

**Answer: B (LEAVE A REPLY)**

Explanation

<https://docs.vmware.com/en/VMware-vSphere/6.7/com.vmware.vsphere.security.doc/GUID-9035D542-B76B-4>

**NEW QUESTION: 55**

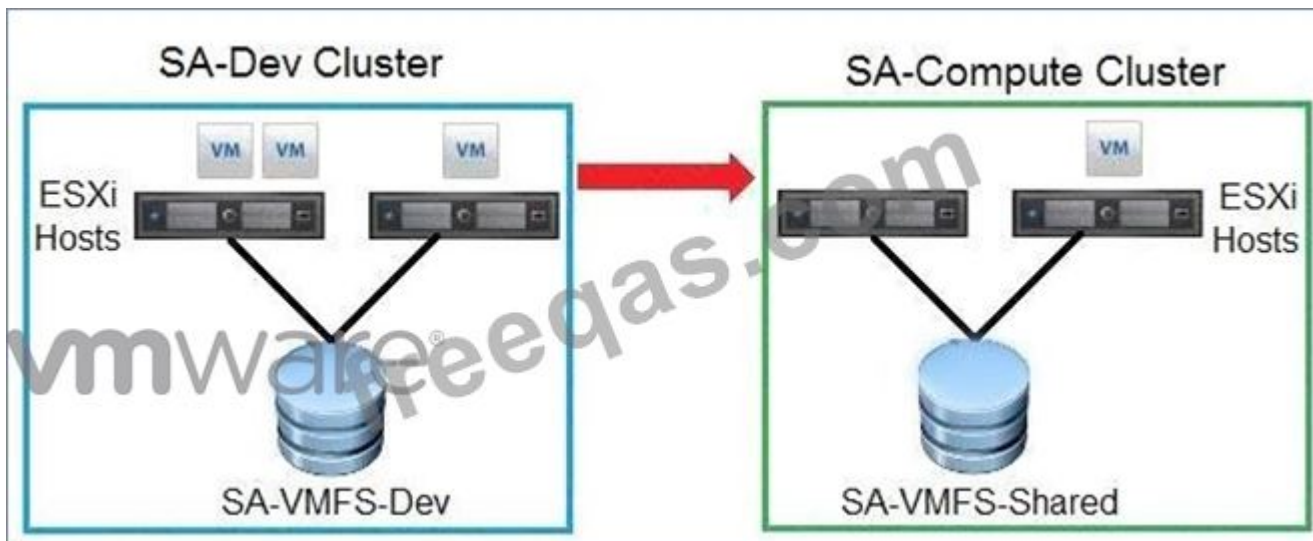
Which tool is used to monitor the vCenter Server Appliance resources?

- A. vmstat
- B. esxcli
- C. esxtop
- D. vimCop

**Answer: C (LEAVE A REPLY)**

**NEW QUESTION: 56**

Refer to the exhibit.



Which two migration methods can an administrator use to move virtual machines from the SA-Dev cluster to the SA-Compute cluster? (Choose two.)

- A. Cold migration of compute resource and storage resource
- B. Hot migration of compute resource only
- C. Cold migration of storage only
- D. Cold migration of compute resource only
- E. Hot migration of compute resource and storage resource

Answer: ([SHOW ANSWER](#))

#### NEW QUESTION: 57

A single host is manually configured to company standards.

Which option would an administrator select to capture this configuration for future use?

- A. Extract Host Profile
- B. Attach Host Profile
- C. Import Host Profile
- D. Reset Host Customizations

Answer: ([SHOW ANSWER](#))

#### NEW QUESTION: 58

An IT department is experiencing random hardware failures that are costing the company money. The CIO is looking for technical support beyond traditional break/fix with enhanced visibility and proactive insights into the environment at no additional cost.

Which VMware service meets the needs of the CIO?

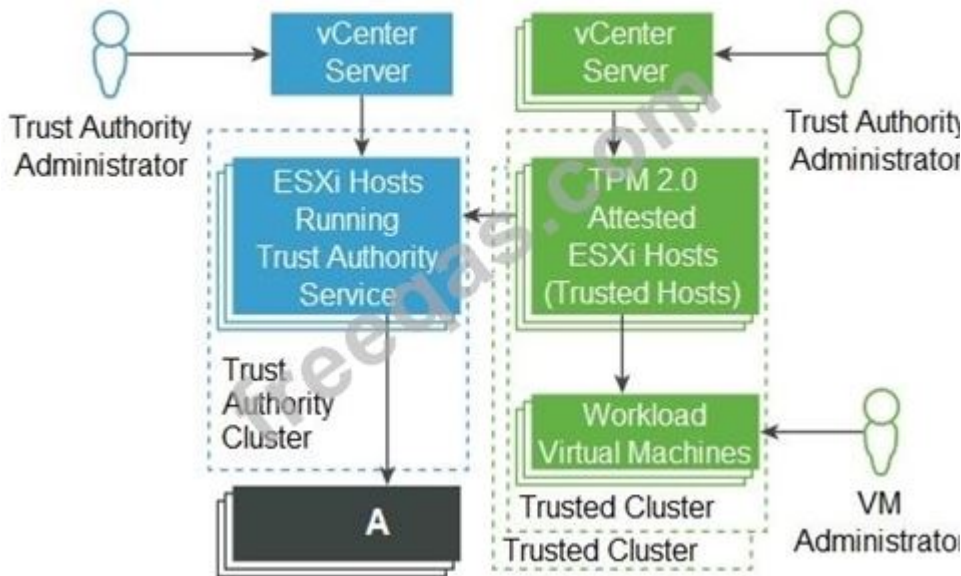
- A. vRealize Operations Manager
- B. VMware Skyline
- C. VMware Global Support Services
- D. VMware Premier Support

Answer: ([SHOW ANSWER](#))

**NEW QUESTION: 59**

Refer to the exhibit.

**Figure 8-1. vSphere Trust Authority Architecture**



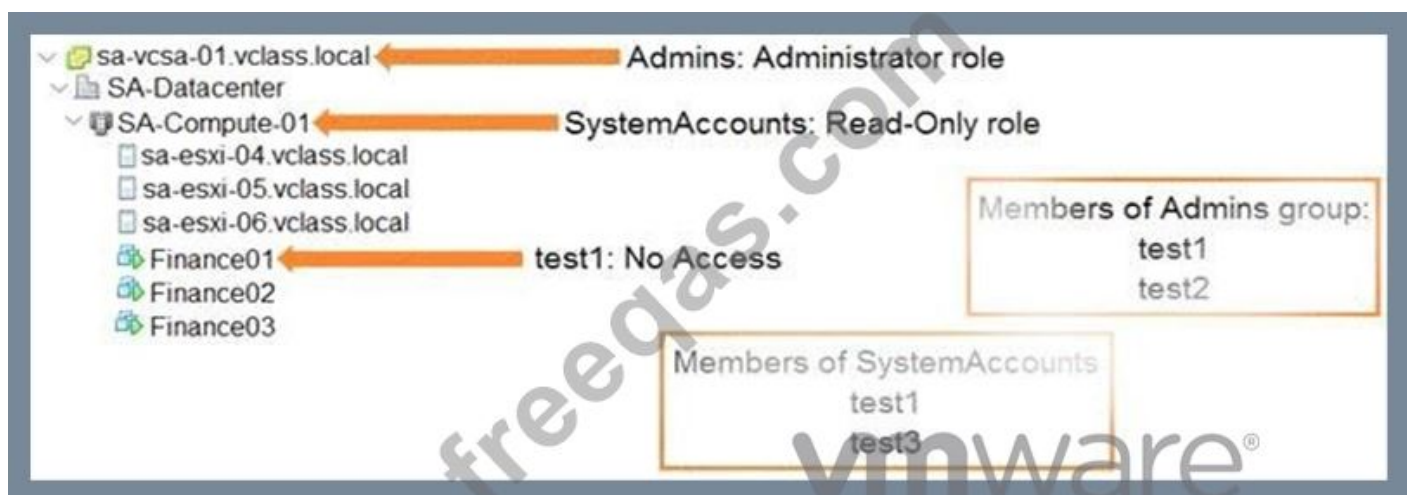
Which trusted infrastructure component is missing and represented by the area labeled "A"? (Choose the best answer.)

- A. vSphere Virtual Machine Encryption
- B. Key Provider Service
- C. Attestation Service
- D. Key Management Server

**Answer: D (LEAVE A REPLY)**

**NEW QUESTION: 60**

Refer to the exhibit.



What is the effective role the test1 account has on the Finance01 virtual machine? (Choose the best answer.)

- A. No access
- B. Administrator
- C. Read-only

D. Virtual machine user

**Answer: A (LEAVE A REPLY)**

Explanation

<https://docs.vmware.com/en/VMware-vSphere/7.0/com.vmware.vsphere.security.doc/GUID-72EE3449-79FD-4E>

### NEW QUESTION: 61

An administrator needs to configure Proactive High Availability (HA) in a vSphere environment so that virtual machines (VMs) do not run on any partially degraded hosts. The administrator would also like to see the recommendations before VMs are migrated.

Which automation and remediation level should the administrator select? (Choose the best answer.)

A. Automation Level - Automated Remediation Level - Maintenance mode

B. Automation Level - Manual Remediation Level - Quarantine mode

C. Automation Level - Manual

Remediation Level - Maintenance mode

D. Automation Level - Automated Remediation Level - Mixed mode

**Answer: C (LEAVE A REPLY)**

**Valid 2V0-21.20PSE Dumps** shared by PrepPdf.com for Helping Passing 2V0-21.20PSE Exam! PrepPdf.com now offer the **newest 2V0-21.20PSE exam dumps**, the PrepPdf.com 2V0-21.20PSE exam **questions have been updated** and **answers have been corrected** get the **newest** PrepPdf.com 2V0-21.20PSE dumps with Test Engine here: <https://www.preppdf.com/VMware/2V0-21.20PSE-prepaway-exam-dumps.html> (110 Q&As Dumps, **40%OFF Special Discount: Exam-Tests**)

### NEW QUESTION: 62

Which two statements are true regarding the use of firmware update packages in vSphere Lifecycle Manager?

(Choose two.)

A. The firmware and drivers add-on are distributed through the official VMware online depot.

B. The firmware and drivers add-on can be used on clusters that are managed with baselines.

C. The firmware and drivers add-on can add or remove components from the ESXi base image.

D. The firmware and drivers add-on is provided by a third-party vendor.

E. A hardware support manager must be registered as a vCenter Server extension.

**Answer: C,E (LEAVE A REPLY)**

### NEW QUESTION: 63

Which step is required when adding an existing hard disk that is configured as a boot disk during virtual machine creation? (Choose the best answer.)

- A. Enable Secure Boot.
- B. Select 'RDM Disk' from the 'Add New Device' drop-down menu.
- C. Remove the existing disk before adding the boot disk.
- D. Set the boot delay to at least 5,000 milliseconds.

**Answer: C (LEAVE A REPLY)**

Explanation

[https://docs.vmware.com/en/VMware-vSphere/7.0/com.vmware.vsphere.vm\\_admin.doc/GUID-79116E5D-22B3](https://docs.vmware.com/en/VMware-vSphere/7.0/com.vmware.vsphere.vm_admin.doc/GUID-79116E5D-22B3)

**Valid 2V0-21.20PSE Dumps** shared by PrepPdf.com for Helping Passing 2V0-21.20PSE Exam! PrepPdf.com now offer the **newest 2V0-21.20PSE exam dumps**, the PrepPdf.com 2V0-21.20PSE exam **questions have been updated** and **answers have been corrected** get the **newest** PrepPdf.com 2V0-21.20PSE dumps with Test Engine here:  
<https://www.preppdf.com/VMware/2V0-21.20PSE-prepaway-exam-dumps.html> (110 Q&As Dumps, **40%OFF** Special Discount: **Exam-Tests**)